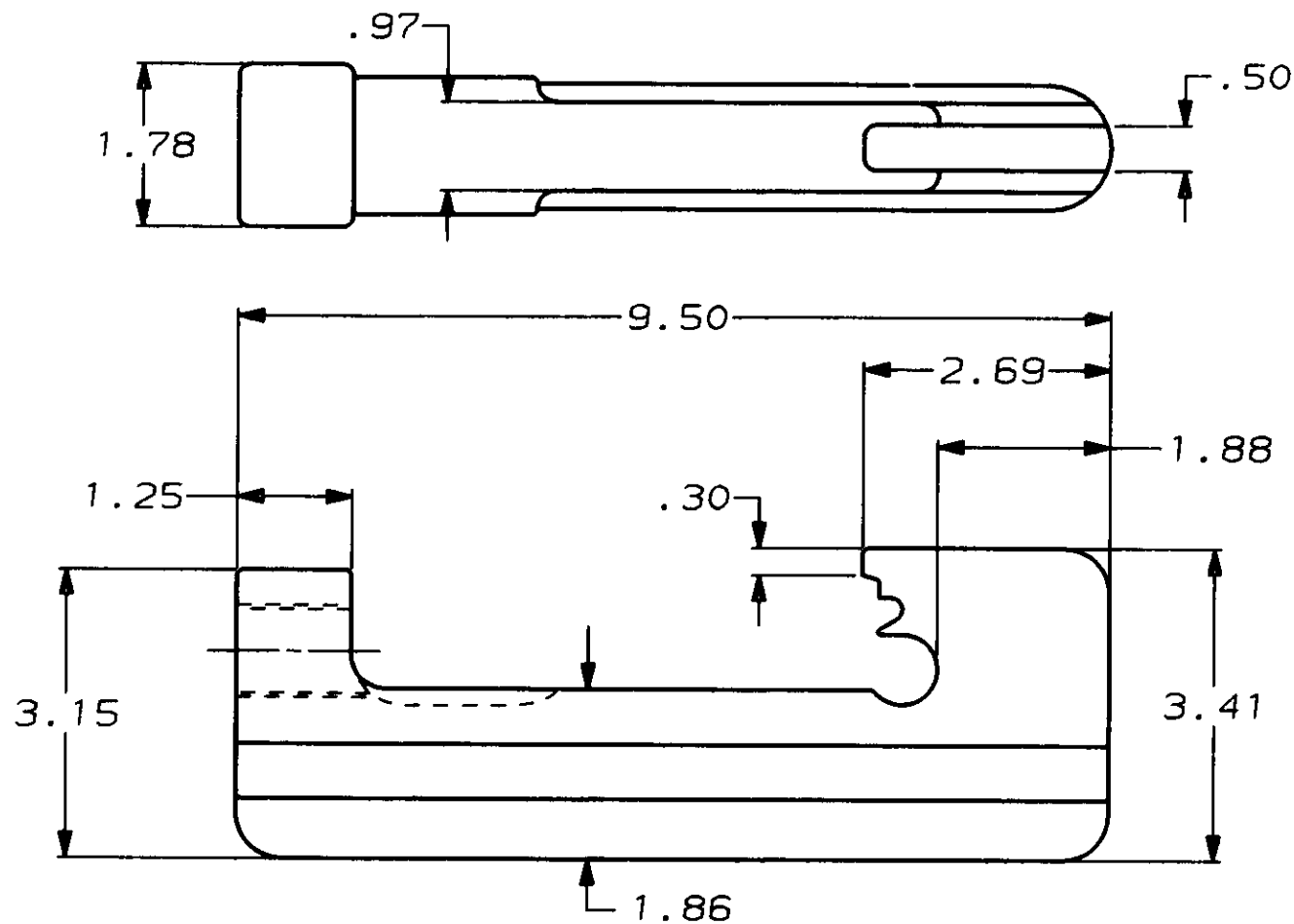
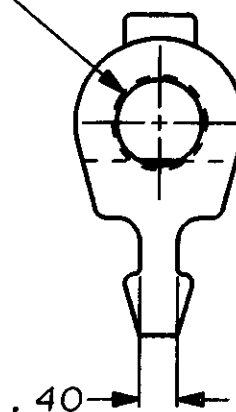


PART NUMBER	REV	FIRST USED
C-69633-2-1	0	63611

THIS DRAWING IS A CONTROLLED DOCUMENT FOR AMP INCORPORATED. IT IS SUBJECT TO CHANGE AND THE CONTROLLING ENGINEERING ORGANIZATION SHOULD BE CONTACTED FOR THE LATEST REVISION

THIS INFORMATION IS CONFIDENTIAL AND IS DISCLOSED TO YOU ON CONDITION THAT NO FURTHER DISCLOSURE IS MADE BY YOU TO OTHER THAN AMP PERSONNEL WITHOUT WRITTEN AUTHORIZATION FROM AMP INCORPORATED, HARRISBURG, PA

1-12 UNF-3B
TRIPLE LEAD THREAD



FOR U.L. APPROVAL ONLY

LOC	A
DIST	-

P	F	LTR	REVISION RECORD	APP	DATE

C-69633-2

QTY REQD PER ASSY		PARTS LIST	
DIMENSIONS IN INCHES. DO NOT SCALE PRINT. TOLERANCES UNLESS OTHERWISE SPECIFIED: 2 PLC DEC ±.02 3 PLC DEC ± 4 PLC DEC ± ANGLES ± SURF TEXTURE: ✓ REMOVE BURRS, BREAK SHARP EDGES R.015 MAX		MATL 100-52 ALLOY STEEL	HT TR Rc 42-46 FIN 112-157 BLACKEN
DR M. UNGER	5/6/93	APP <i>[Signature]</i>	REL <i>[Signature]</i>
CHK -	REL -	AMP Incorporated Harrisburg, PA 17105-3608	
NAME AMPACT HEAD FOR TOOL NO 63611		MACHINE REF AMPACT	
SCALE 1:2	DWG NO C-69633-2	SHEET 1 OF 1	REV 0