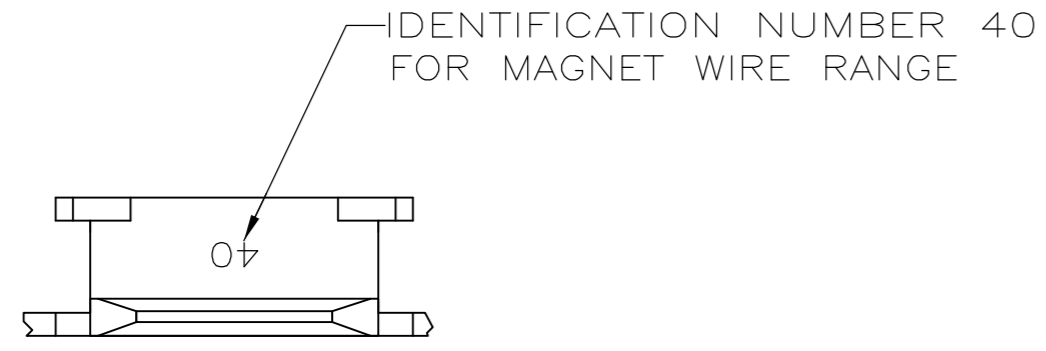
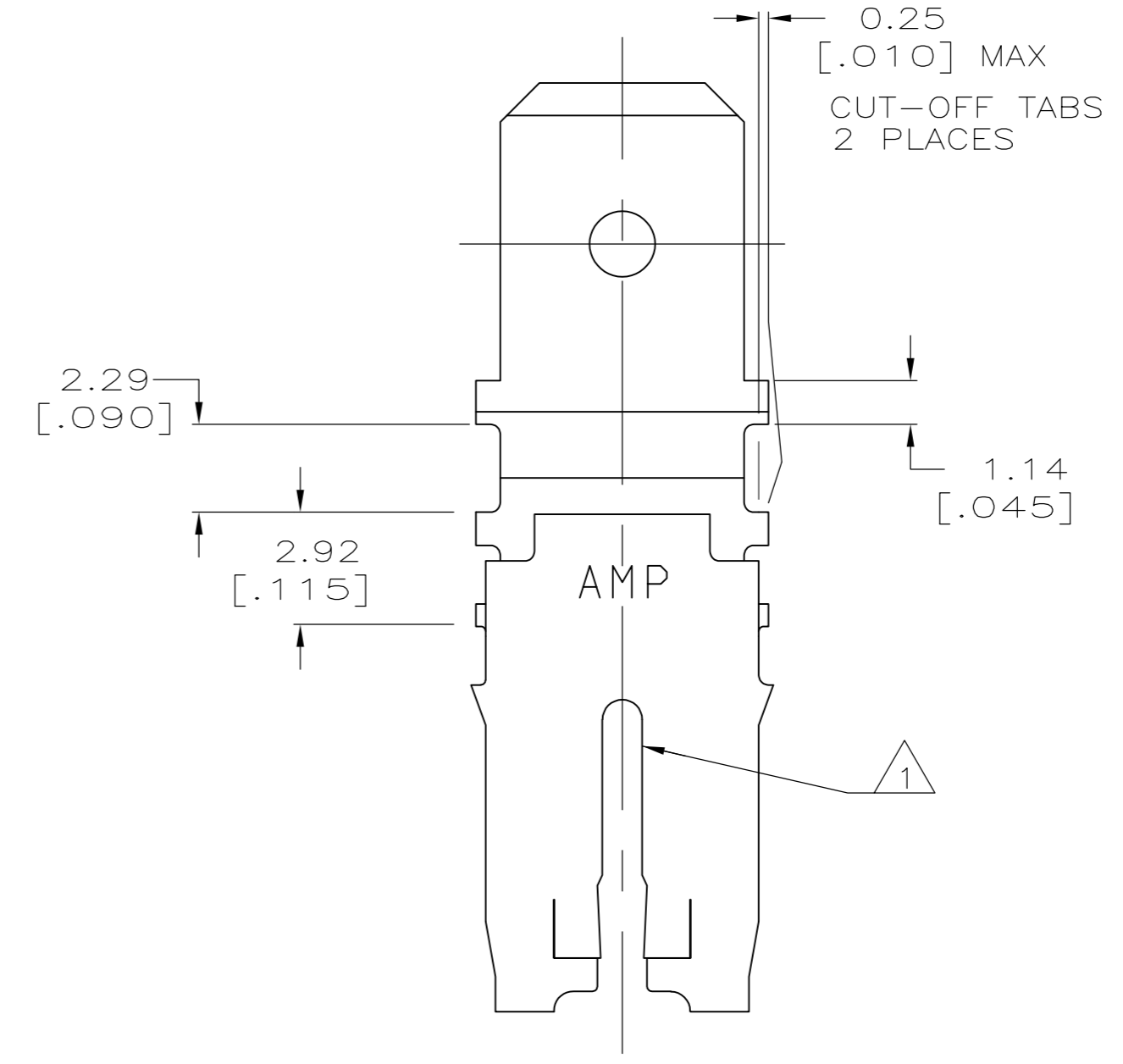
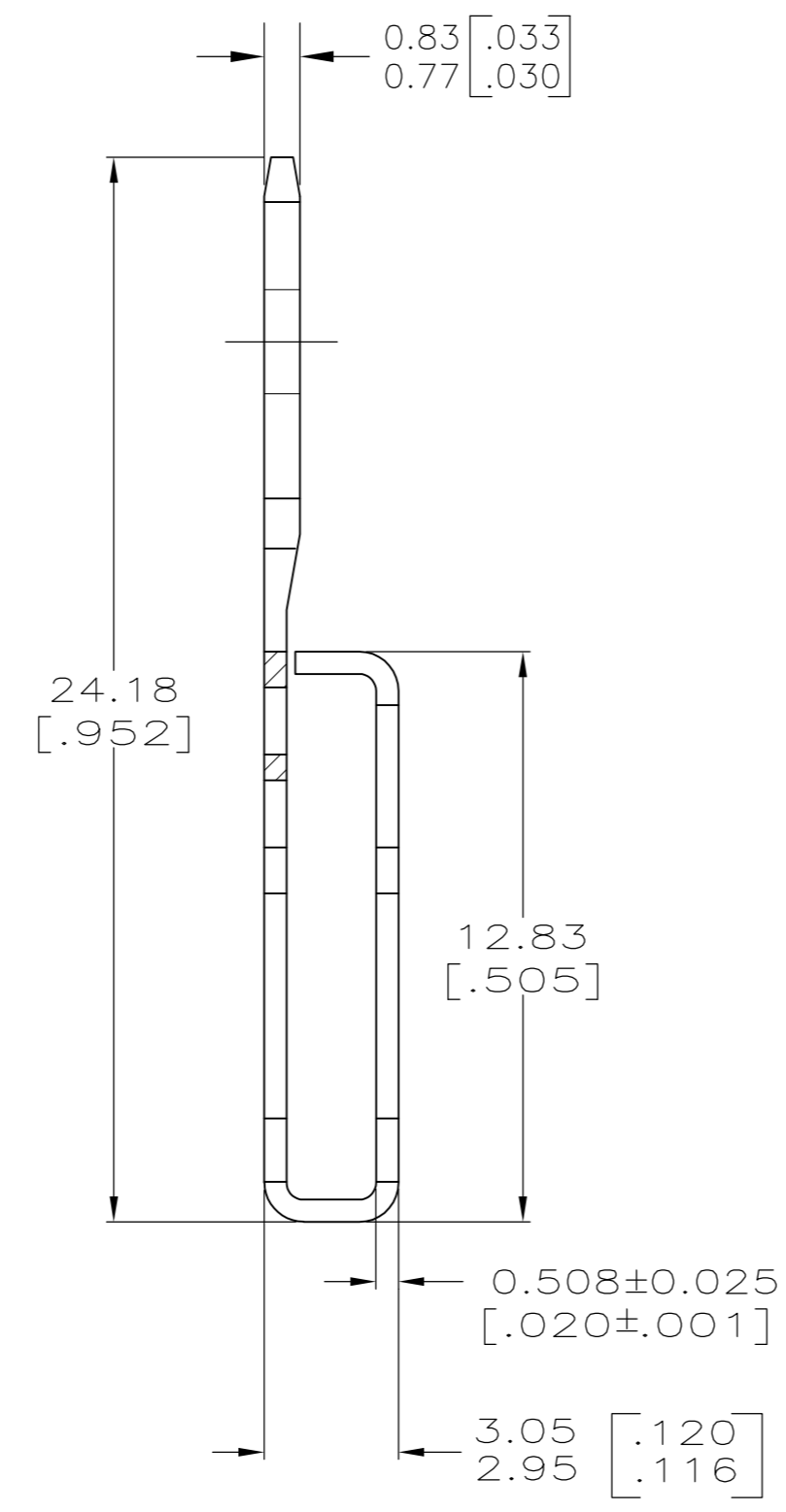
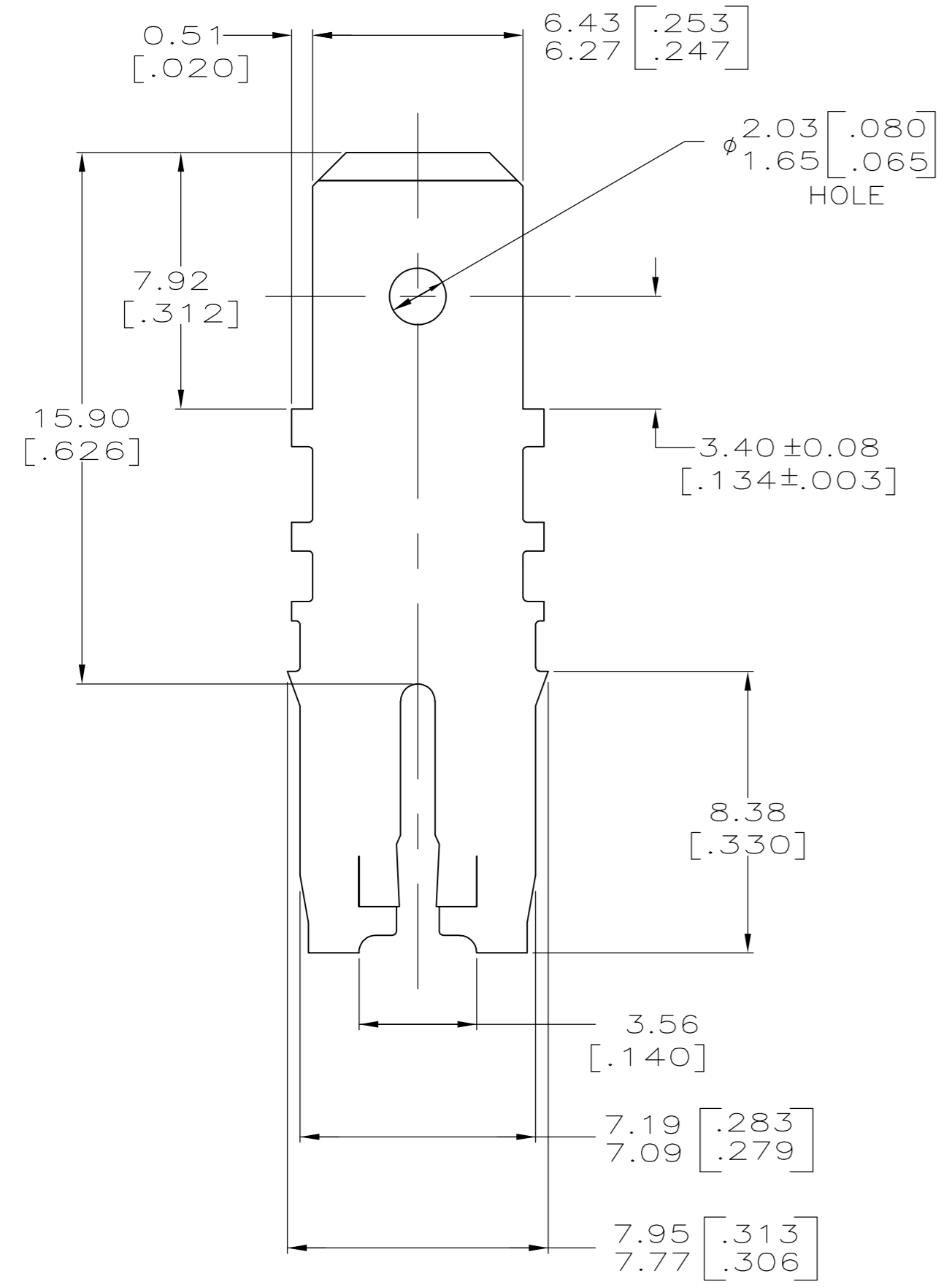


THIS DRAWING IS UNPUBLISHED. RELEASED FOR PUBLICATION
 © COPYRIGHT - By - ALL RIGHTS RESERVED.

LOC	DIST	REVISIONS			
P	LTR	DESCRIPTION	DATE	DWN	APVD
AF	50	C2	ECR-15-005665	10AUG2015	BDA/PKS



- 1 SLOTTED ACCEPTS EITHER A SINGLE OR DOUBLE MAGNET WIRE OF THE SAME SIZE AND TYPE.
 COPPER RANGE: 1.29-1.45mm [#16-#15] AWG
 ALUMINUM RANGE: 1.37-1.54mm [#15.5-#14.5] AWG.
 ALUMINUM WIRE RANGE APPLIES FOR POST-TIN PLATED VERSIONS ONLY.
- 2 AFTER INSERTION INTO PLASTIC HOLDER MAG-MATE MUST BE POTTED-IN TO PREVENT PULL-OUT WHEN MATING RECEPTACLE IS DISCONNECTED.



63881-1
 PART NO

THIS DRAWING IS A CONTROLLED DOCUMENT.		DWN R.GRZYBOWSKI 18/OCT/95		
DIMENSIONS: INCHES		CHK M.S.FEHER 18/OCT/95		
TOLERANCES UNLESS OTHERWISE SPECIFIED:		APVD N.S.NEFF 18/OCT/95	NAME	
0 PLC ± -		PRODUCT SPEC	TAB, LOOSE PIECE,	
1 PLC ± -		APPLICATION SPEC	6.35 [.250] FASTON™	
2 PLC ± 0.25 [.010]		114-2066	SIZE A2	CAGE CODE 00779
3 PLC ± -		WEIGHT -	DRAWING NO C=63881	RESTRICTED TO -
4 PLC ± -		CUSTOMER DRAWING	SCALE 6:1	SHEET 1 of 1
ANGLES ± -			REV C2	
FINISH TIN PLATED				