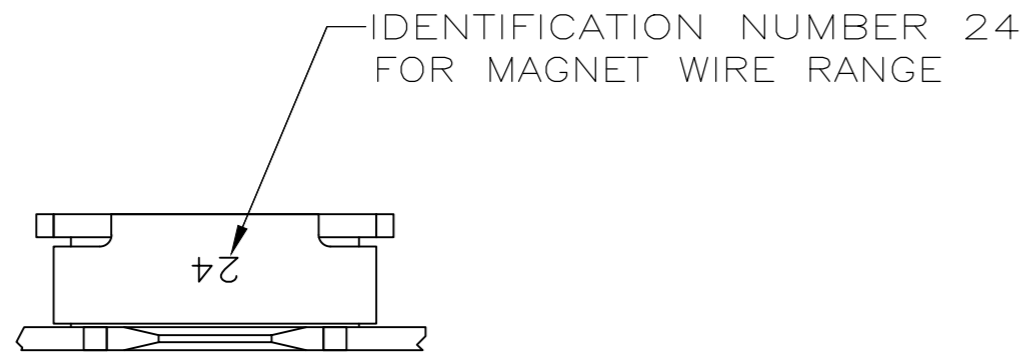
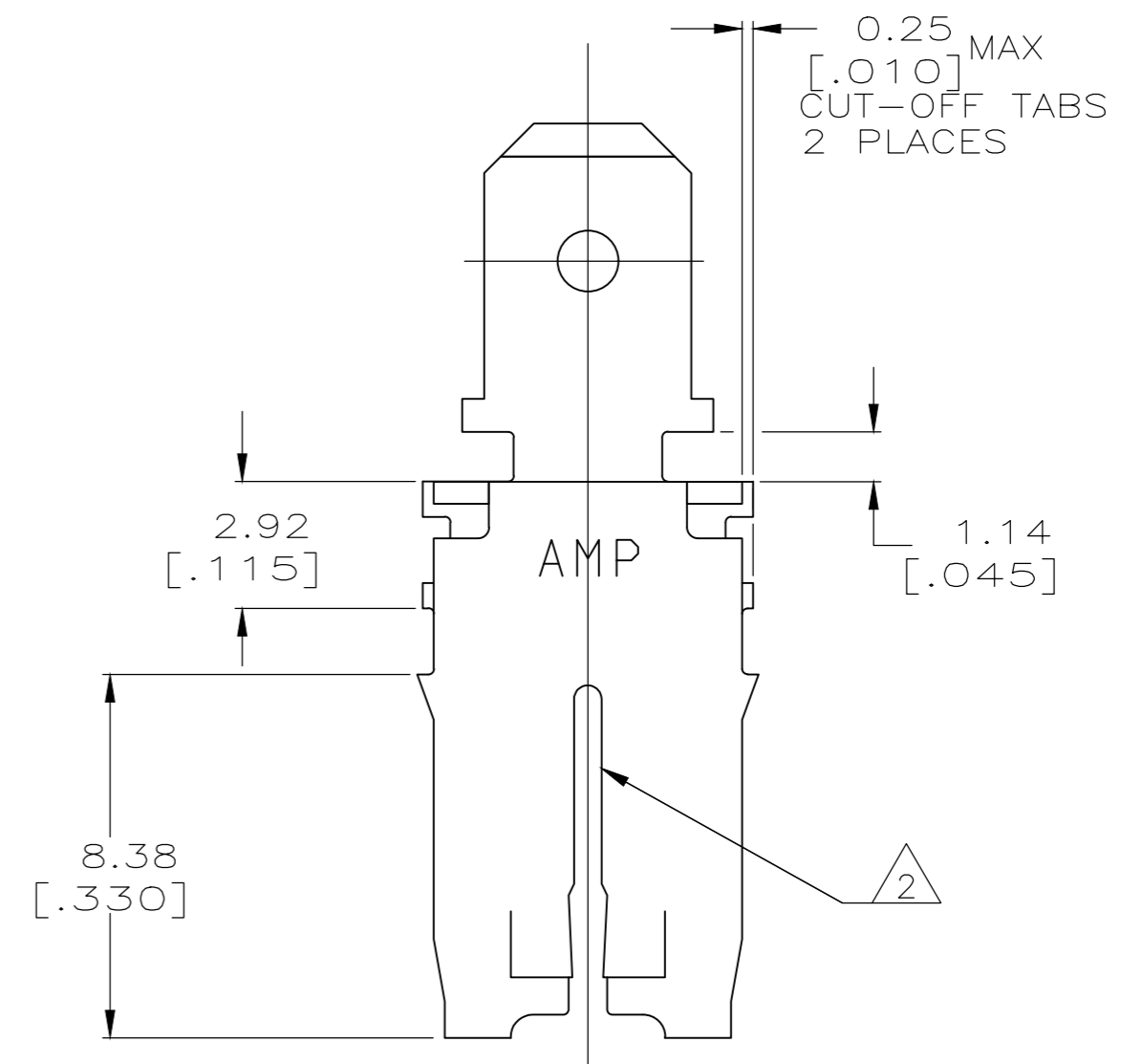
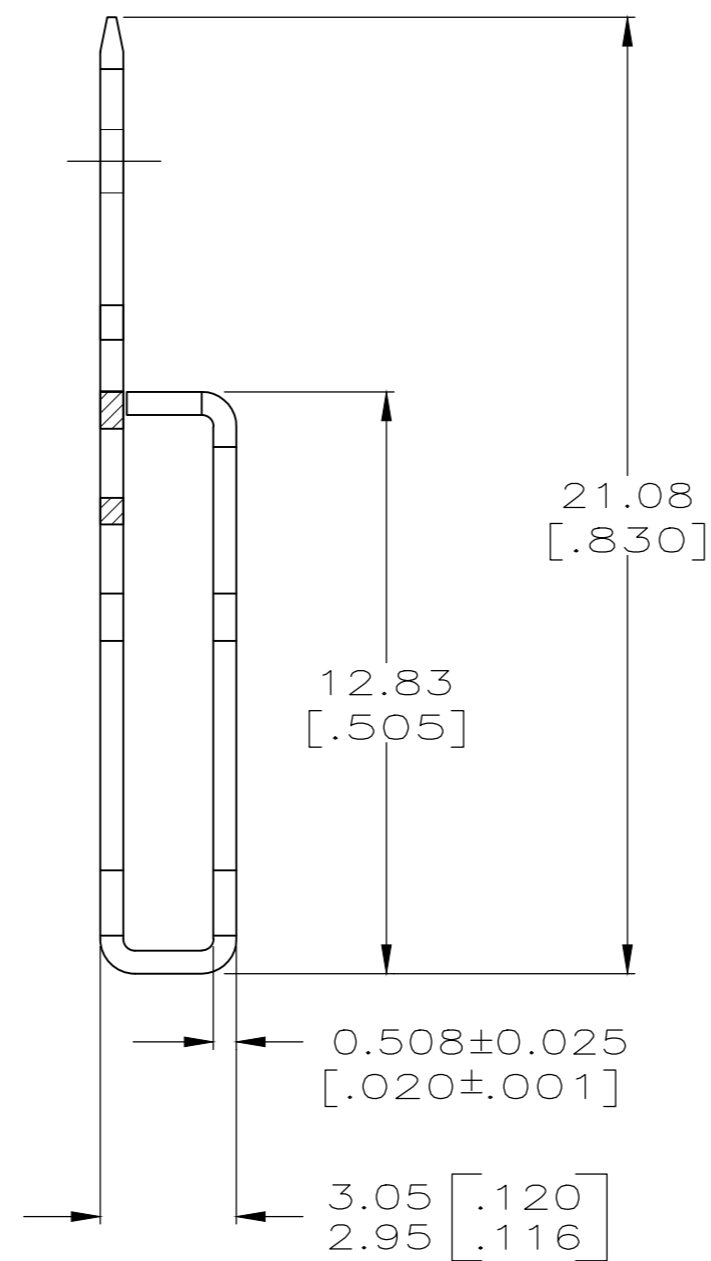
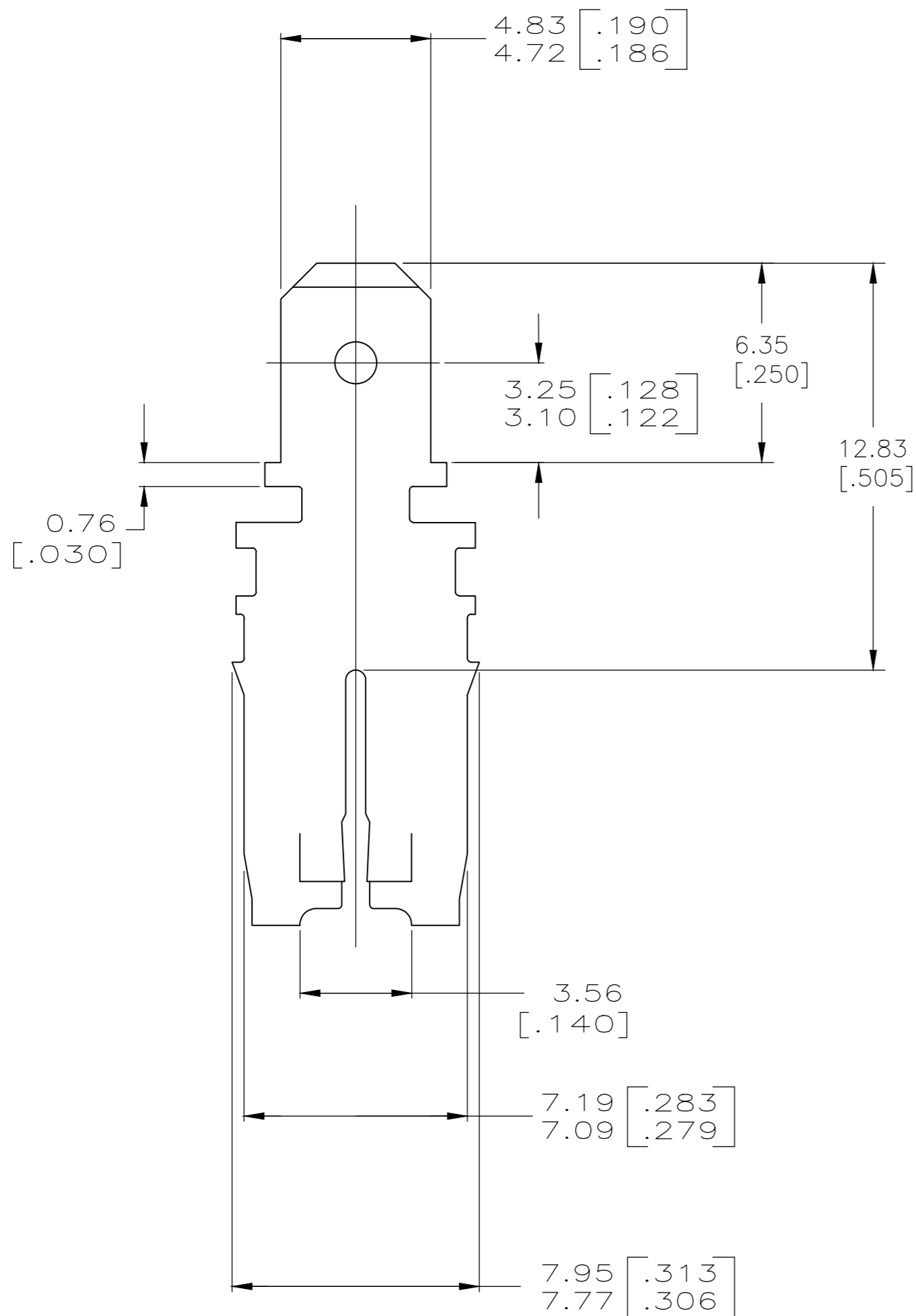


THIS DRAWING IS UNPUBLISHED. RELEASED FOR PUBLICATION
 © COPYRIGHT - By - ALL RIGHTS RESERVED.

LOC	DIST	REVISIONS			
P	LTR	DESCRIPTION	DATE	DWN	APVD
AF	50				
		A4 REVISED PER ECR-18-014989	26SEP2018	BW	JH



- 1 VARNISH RESIST OVER TIN.
- 2 SLOT ACCEPTS 0.91-1.15mm [#19-#17] AWG COPPER MAGNET WIRE OR SLOT ACCEPTS 0.97-1.22mm [#18.5-#16.5] AWG ALUMINIUM MAGNET WIRE. ALUMINIUM WIRE RANGE IS APPLICABLE FOR POST TIN PLATED PARTS ONLY. 2 WIRES OF THE SAME SIZE MAX PER SLOT.
- 3 AFTER INSERTION INTO PLASTIC HOLDER TAB PORTION MUST BE BENT OVER 45° TO 90° OR POTTED-IN TO PREVENT PULL-OUT WHEN MATING RECEPTACLE IS DISCONNECTED.



LOOSE PIECE	63643-1
TYPE	PART NO.

THIS DRAWING IS A CONTROLLED DOCUMENT.		DWN	3/7/92	TE Connectivity	
		CHK	3/9/92	NAME	
		MICHAEL S. FEHER		TAB,	
		JEFF R. RUTH		4.75 [.187] FASTON™	
		NELSON E. NEFF		MAG-MATE™	
		108-2053		SIZE	
		APPLICATION SPEC		CAGE CODE	
		114-2066		DRAWING NO	
		WEIGHT		RESTRICTED TO	
		-		-	
MATERIAL		FINISH		SCALE	
BRASS		1		6:1	
		CUSTOMER DRAWING		SHEET	
				1 of 1	
				REV	
				A4	