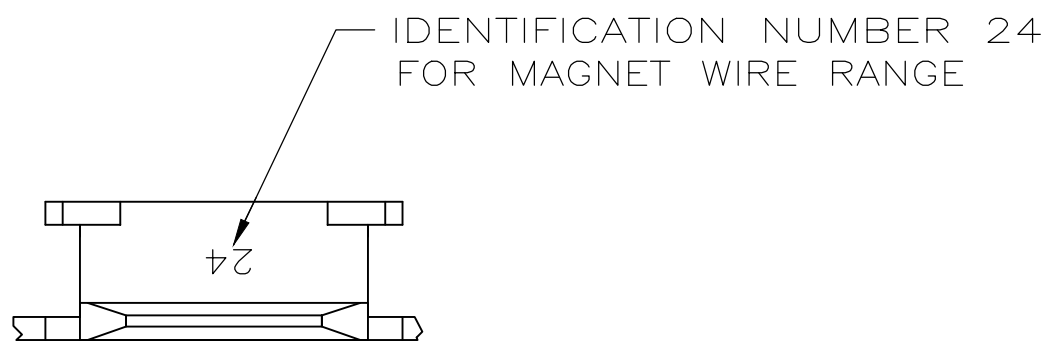
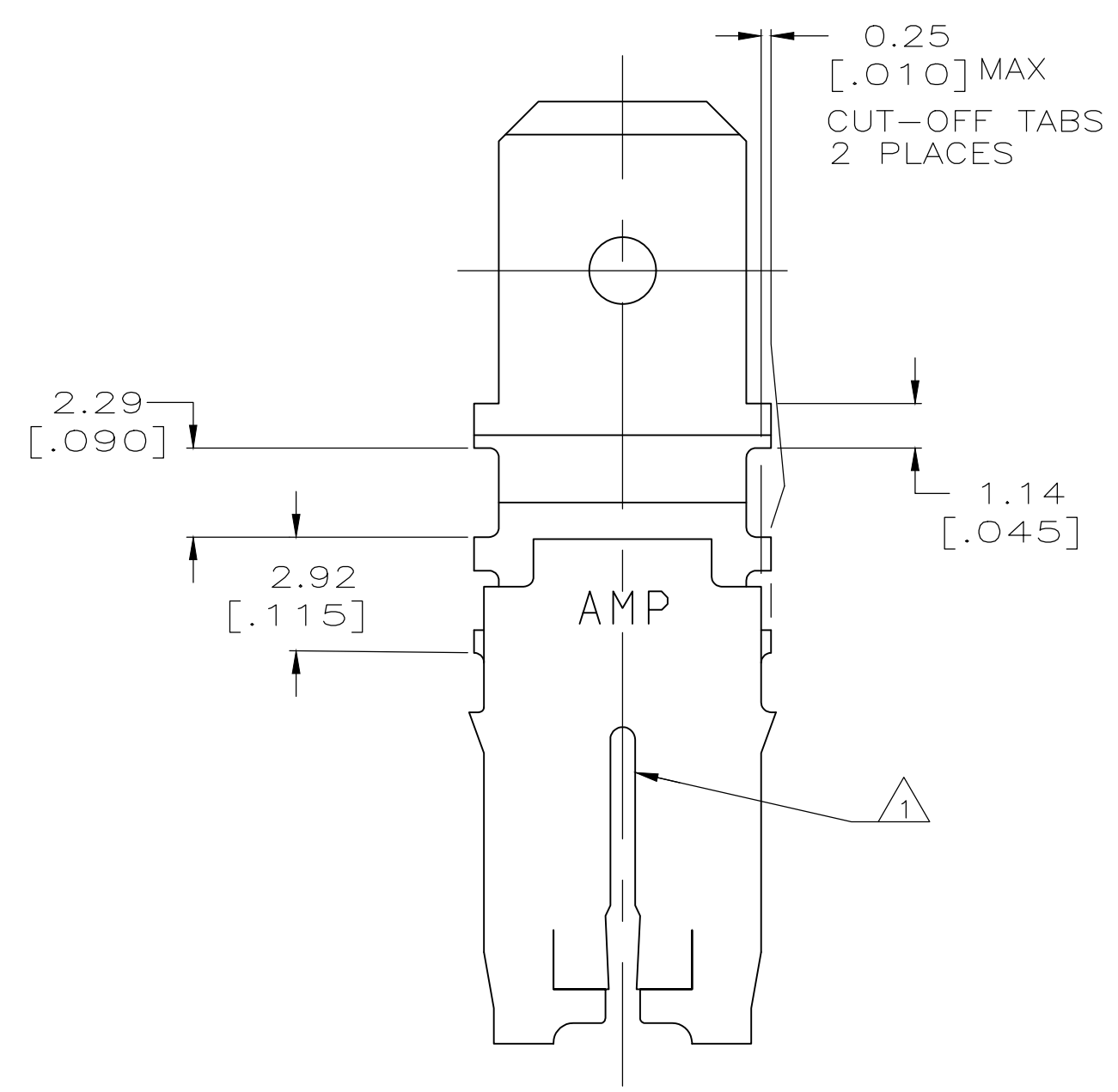
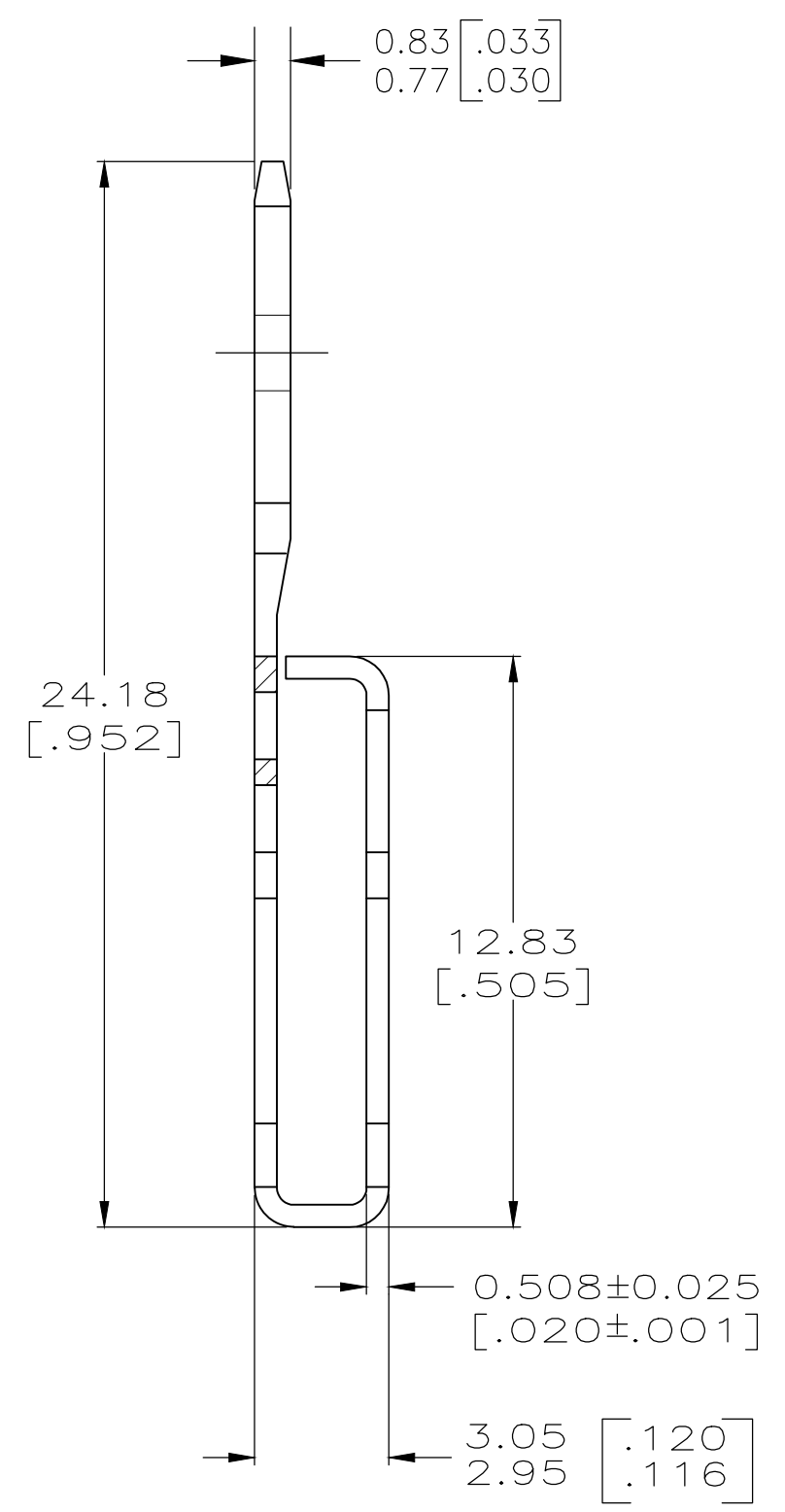
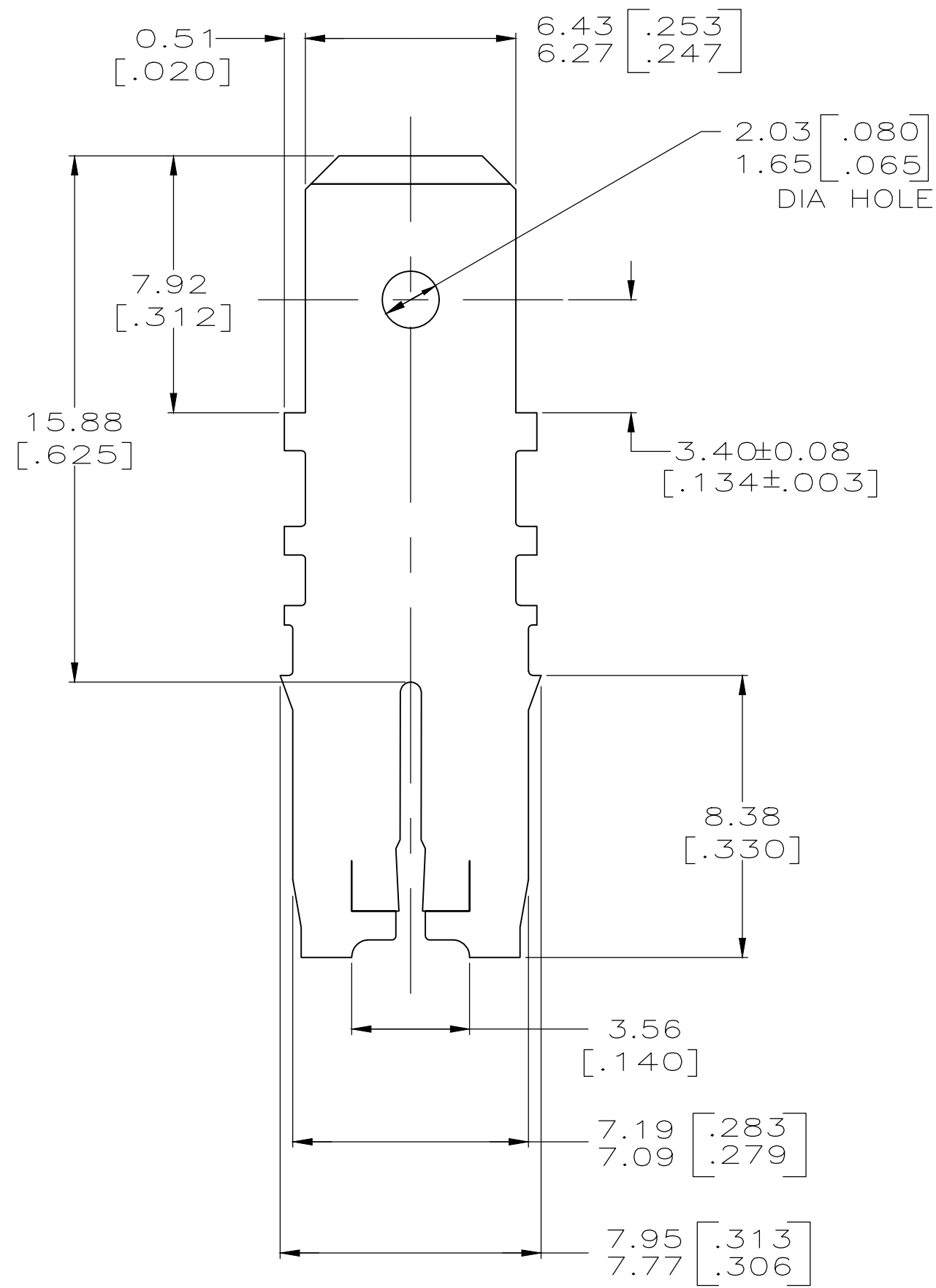


THIS DRAWING IS UNPUBLISHED. RELEASED FOR PUBLICATION  
 © COPYRIGHT - By - ALL RIGHTS RESERVED.

LOC		DIST		REVISIONS			
P	LTR	DESCRIPTION		DATE	DWN	APVD	
AF	50	D4		REVISED PER ECR-19-013909	30SEP2019	PC MB	



- 1 SLOT ACCEPTS 0.91-1.15mm [#19-#17] AWG COPPER MAGNET WIRE. 2 WIRES OF THE SAME SIZE MAX PER SLOT. ALUMINIUM RANGE 0.95-1.15mm [#18.5-#17] AWG, ALUMINIUM WIRE RANGE APPLIES FOR POST TIN PLATED PART NUMBERS ONLY.
- 2 AFTER INSERTION INTO PLASTIC HOLDER TAB PORTION MUST BE BENT OVER 45° TO 90° OR POTTED-IN TO PREVENT PULL-OUT WHEN MATING RECEPTACLE IS DISCONNECTED.
- 3 0.002032 [.000080] MIN TIN PLATE.
- 4 VARNISH RESIST COATING OVER 0.002032 [.000080] MIN TIN PLATE
- 5 PRELIMINARY - NOT FOR PRODUCTION



	4	1-63598-1
OBSOLETE	3	5-63598-2
	4	63598-1
FINISH		PART NO

THIS DRAWING IS A CONTROLLED DOCUMENT.		DWN 25/OCT/94 PHILLIP M. FORTNEY	TE Connectivity	
DIMENSIONS: INCHES		CHK 25/OCT/94 MICHAEL S. FEHER	NAME	
TOLERANCES UNLESS OTHERWISE SPECIFIED:		APVD 25/OCT/94 NELSON E. NEFF	PRODUCT SPEC	
0 PLC ± -		108-2053	APPLICATION SPEC	
1 PLC ± -		114-2066	SIZE CAGE CODE DRAWING NO	
2 PLC ± 0.25 [.010]		WEIGHT -	A2 00779	C=63598
3 PLC ± -		CUSTOMER DRAWING	SCALE 6:1	SHEET 1 OF 1
4 PLC ± -			REV D4	
ANGLES ± -				
FINISH SEE TABLE				
MATERIAL BRASS				