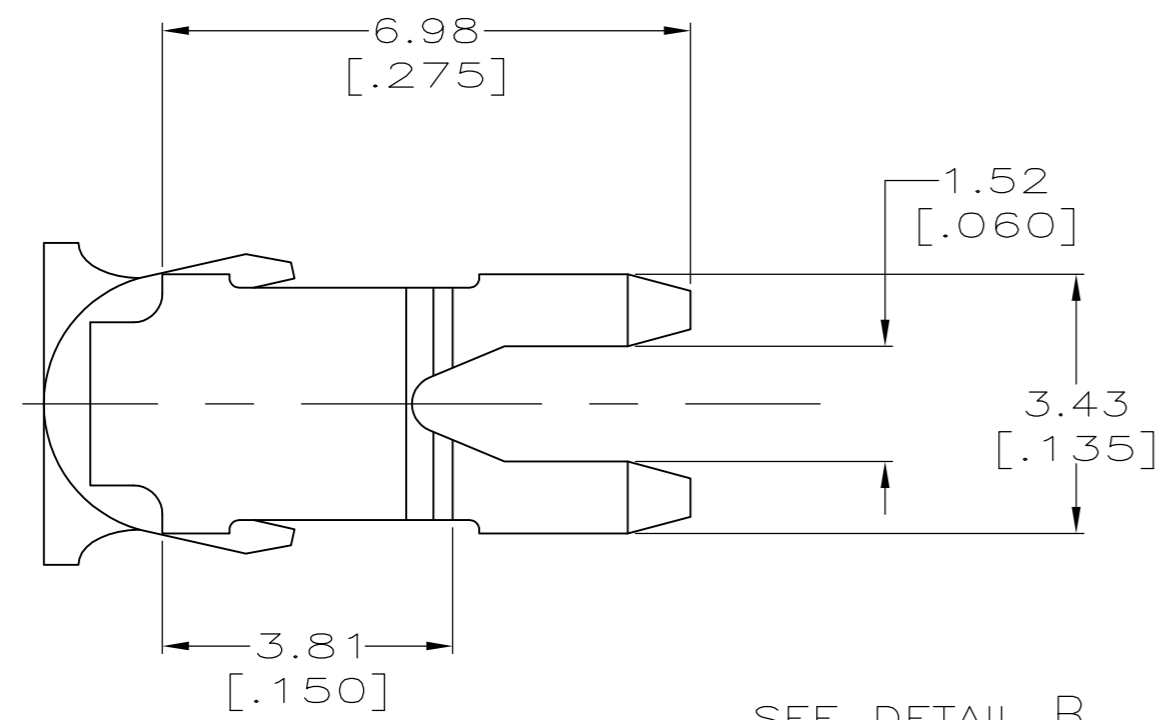
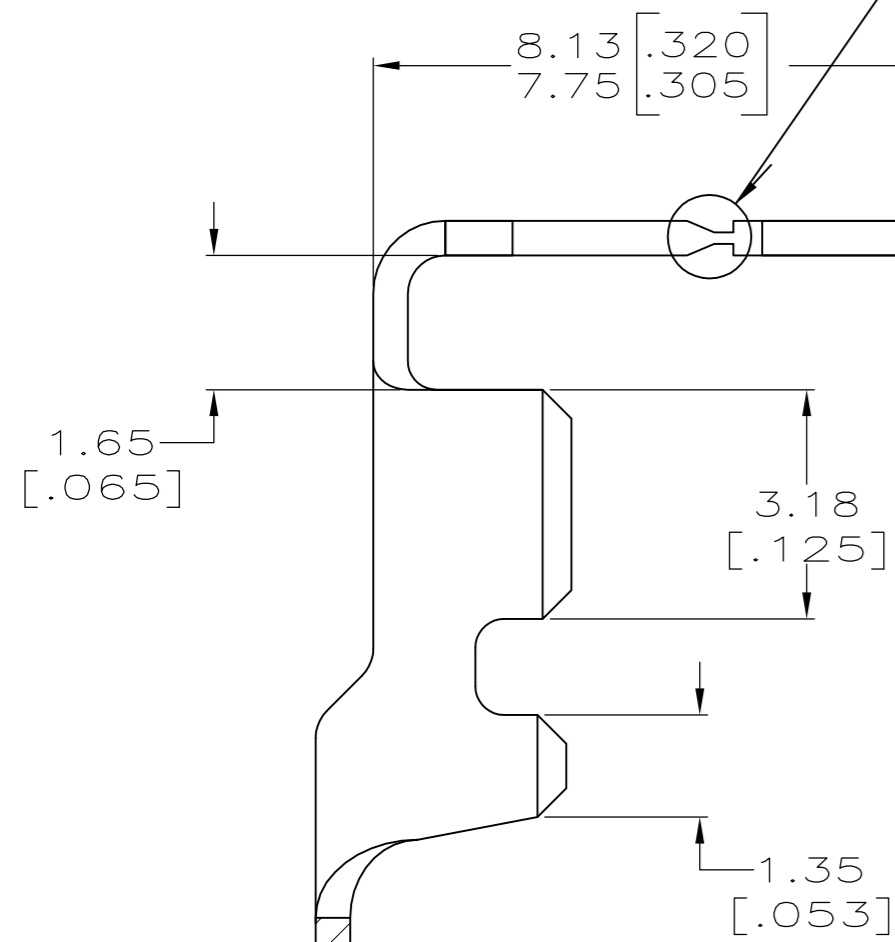


THIS DRAWING IS UNPUBLISHED. RELEASED FOR PUBLICATION
 © COPYRIGHT - By - ALL RIGHTS RESERVED.

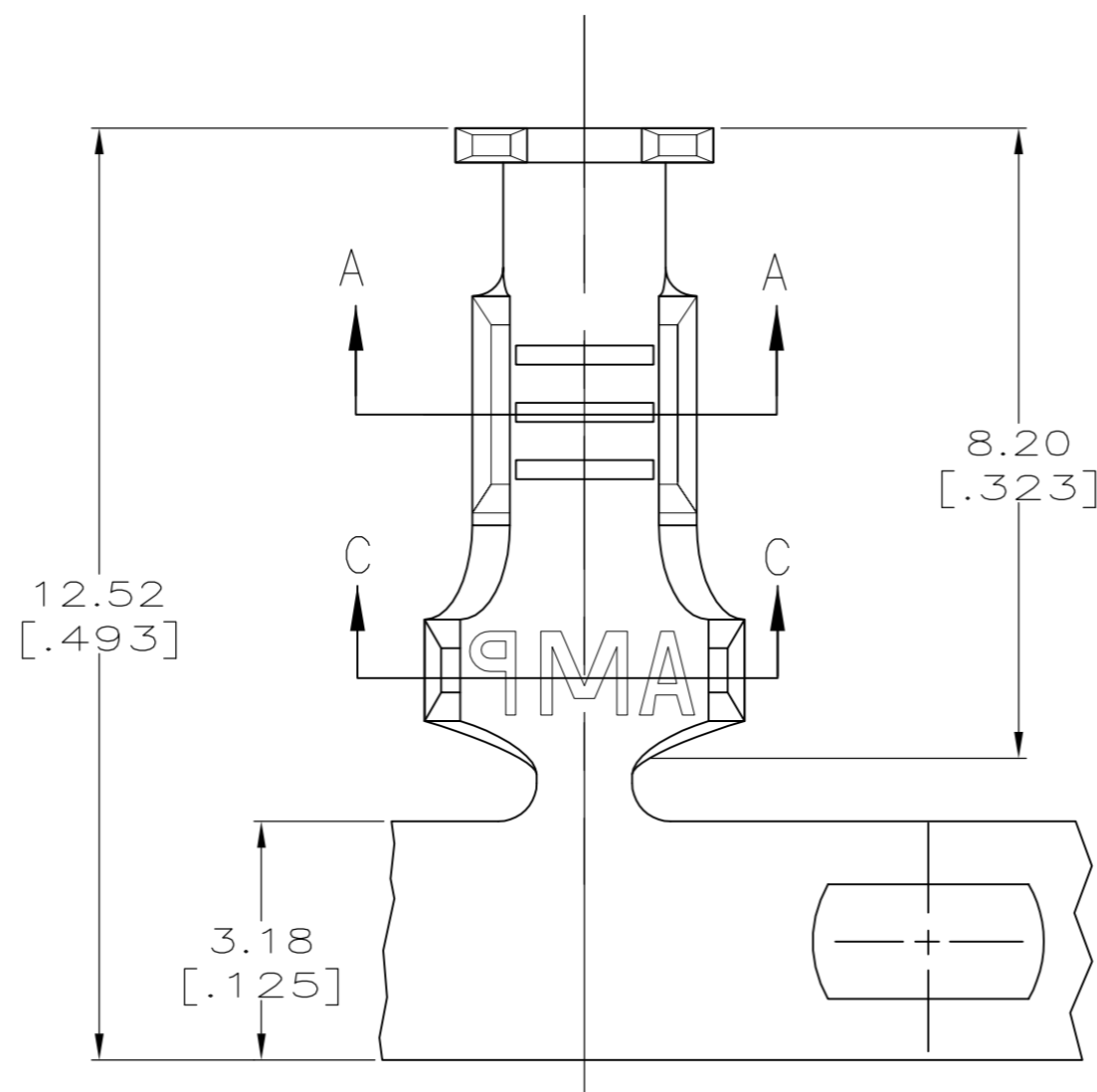
| LOC | | DIST | | REVISIONS | | | |
|-----|-----|-------------|---------------|-----------|-----|------|--|
| P | LTR | DESCRIPTION | | DATE | DWN | APVD | |
| AF | 50 | M1 | ECR-13-017177 | 05NOV13 | PKS | RRP | |



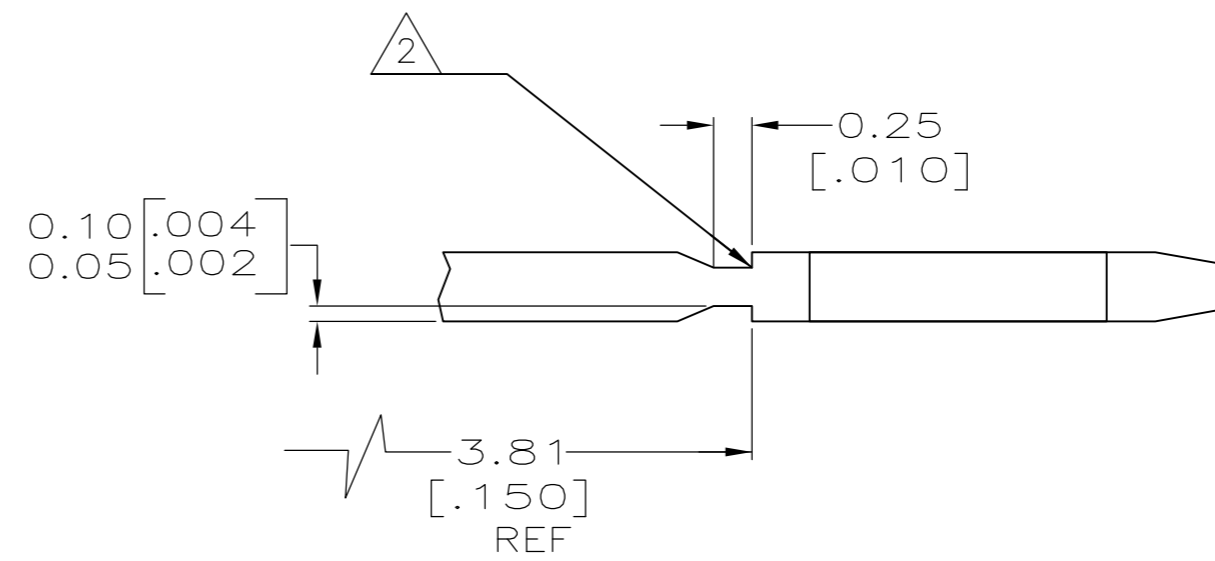
SEE DETAIL B



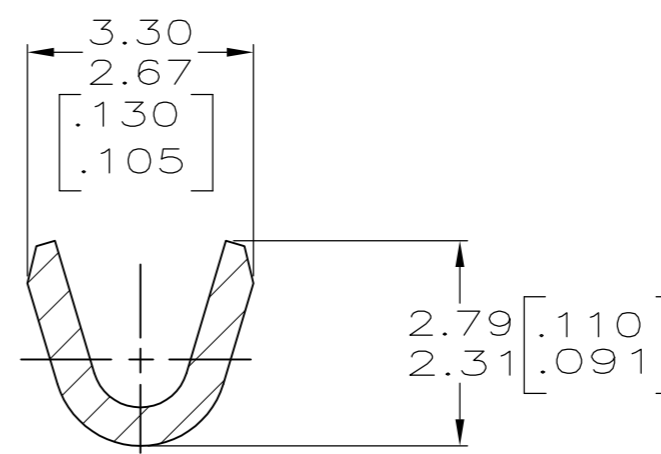
0.457 ± 0.025
[.018 ± .001]



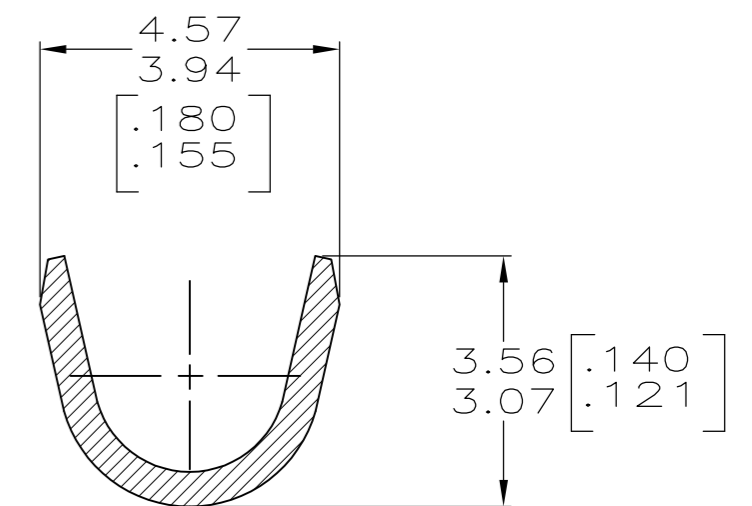
1 CONTINUOUS STRIP ON REELS
 2 FOR OPTIMUM RETENTION IN POKE-IN TYPE MAG-MATE TERMINALS, THE SERRATION AS SHOWN MUST BE ENGAGED WITH THE EDGE OF THE LEAF



DETAIL B
SCALE 20:1



SECTION A-A



SECTION C-C

| | | |
|------------------------------|-------------------------------------|-------------|
| 1.52-2.54 [.060-.100] DIA | 0.3-0.8mm ² [#22-#18] | 62896-1 |
| INSULATION RANGE | WIRE RANGE | PART NUMBER |

| | | | | |
|--|--|--------------------------------|------------------------------------|-----------------------|
| THIS DRAWING IS A CONTROLLED DOCUMENT. | | DWN R.GRZYBOWSKI 30JUL96 | TE Connectivity | |
| DIMENSIONS: mm [INCHES] | | CHK M.S.FEHER 30JUL96 | NAME TAB, POKE-IN, MAG-MATE™ | |
| TOLERANCES UNLESS OTHERWISE SPECIFIED: 0 PLC ± - 1 PLC ± - 2 PLC ± 0.25[.010] 3 PLC ± - 4 PLC ± - ANGLES ± - | | APVD G.PORTA 30JUL96 | PRODUCT SPEC 108-22045 | |
| MATERIAL BRASS | | FINISH TIN PLATE | APPLICATION SPEC 114-2050 | RESTRICTED TO - |
| WEIGHT - | | SIZE A2 | CAGE CODE 00779 | DRAWING NO C=62896 |
| CUSTOMER DRAWING | | SCALE 10:1 | SHEET 1 of 1 | REV M1 |