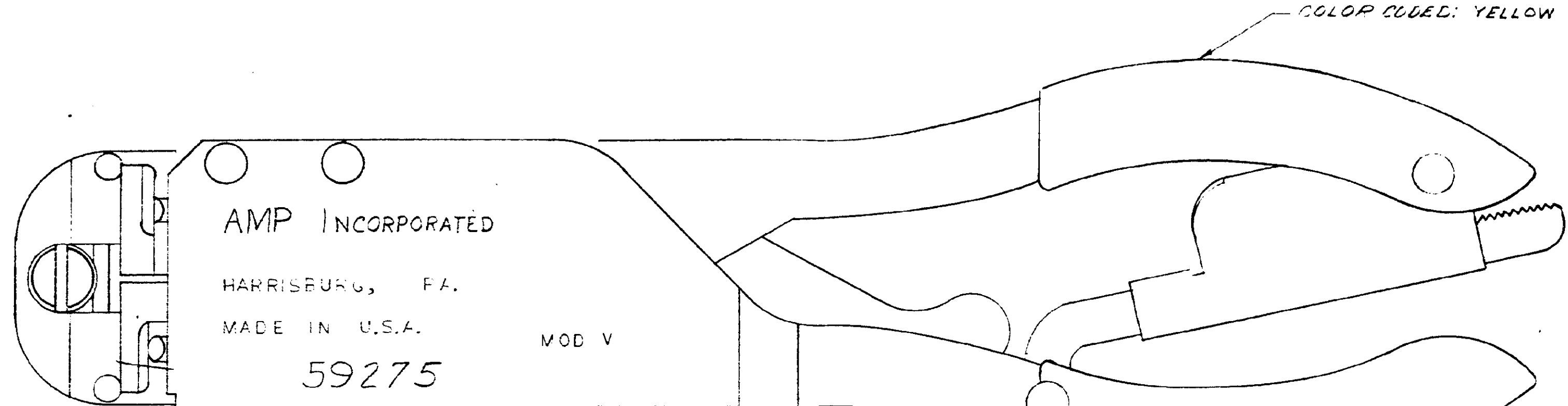
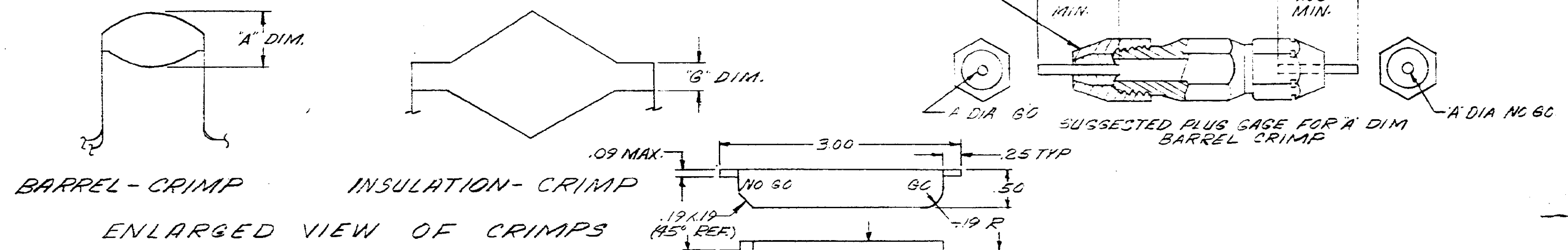


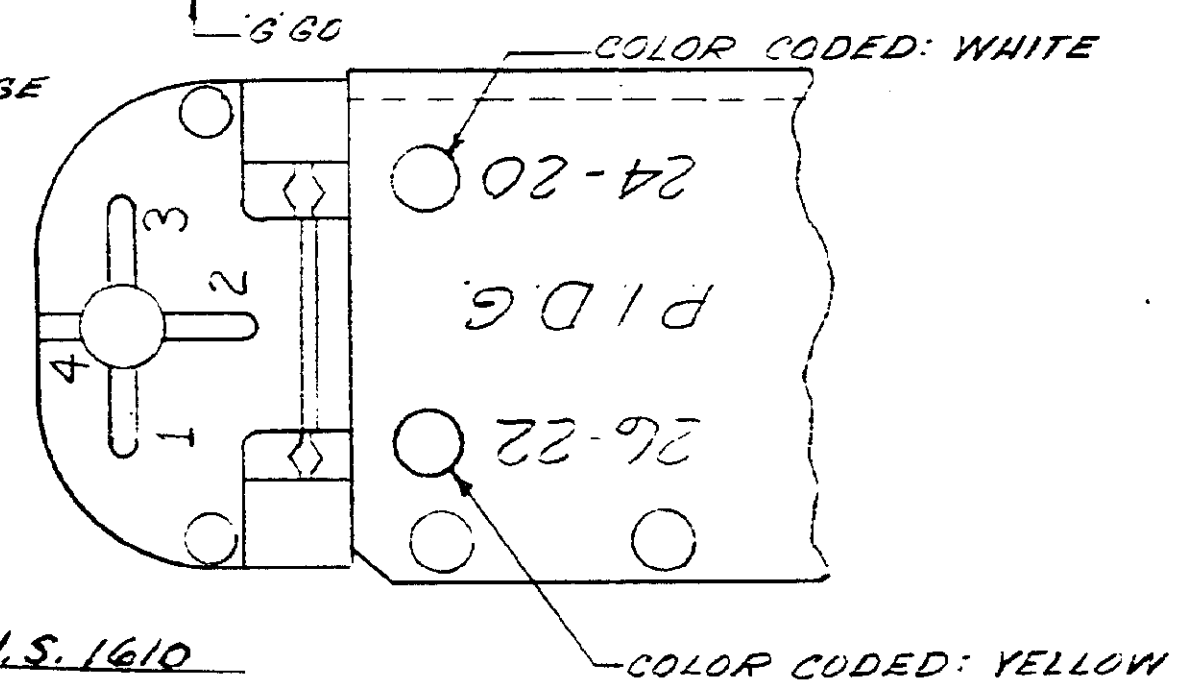
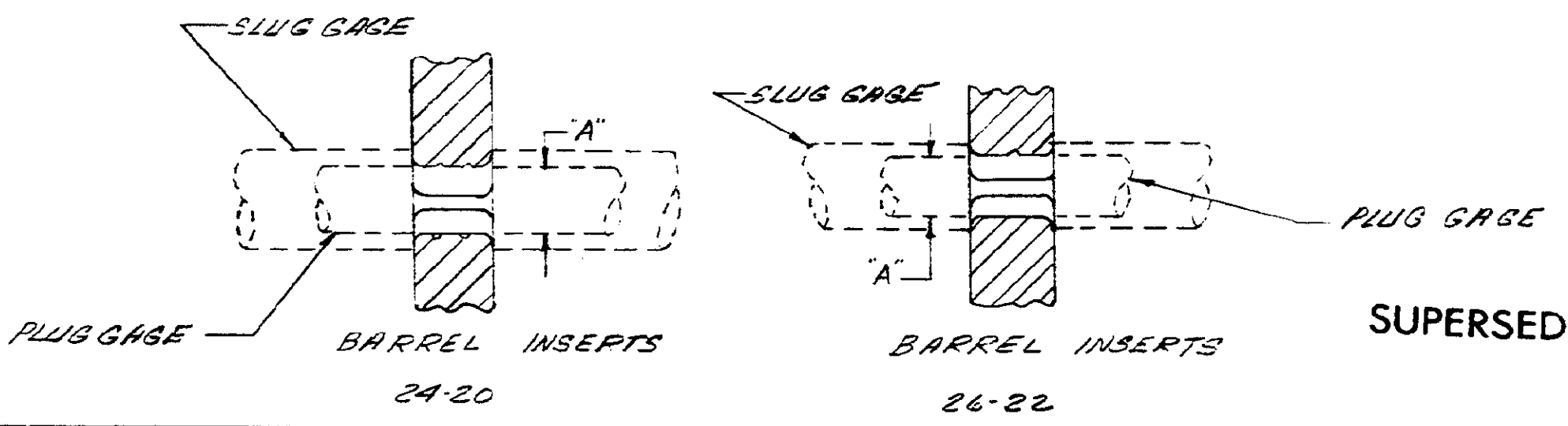
NUMBER 59275



NOTE:  
 1. WHEN PLUG OR SLUG GAGING OF BARREL CRIMP IT IS IMPORTANT TO NOTE THAT DIMENSION "A" IS THE FIGURE REQUIRED  
 PLUG GAGE DIMENSIONS APPLY WHEN TOOL IS BOTTOMED BUT NOT UNDER PRESSURE.



WIRE SIZE	"A" DIA. BARREL CRIMP		"G" DIM. INSUL. CRIMP	
	GO	NO GO	GO AT POS #1	NO GO AT POS #2
26-22	.063	.069	.025	.075
24-20	.089	.095	.035	.085



SUPERSEDED BY I.S. 1610

DIMENSIONS IN INCHES DO NOT SCALE PRINT

REV	DESCRIPTION	DATE
VI	SUB BY I.S. 1610	12-31-62
V	REVISED	12-31-62
LTR	REVISION RECORD	ECH

REQUIRED PER ASSEMBLY	QTY	NUMBER	NAME	REMARKS	ITEM NO.
© 1967 AMP INCORPORATED. ALL RIGHTS RESERVED. AMP PRODUCTS COVERED BY PATENTS AND/OR PATENTS PENDING.					
DR: P. J. ... 10-31-62 CHK: L. J. ... 12-3-67			MATERIAL AND FINISH CLASS: + + + TYPE: C-PIDG		
WIRE - RANGE - INSULATION 26-22 + + +			TOLERANCE EXCEPT AS NOTED .015 ± .015 = 1" 0"		
SCALE: 2:1			LOC: MC NO. 59275		
NAME: L. J. ... 12-3-67			T HEAD ASSEMBLY MOD V		