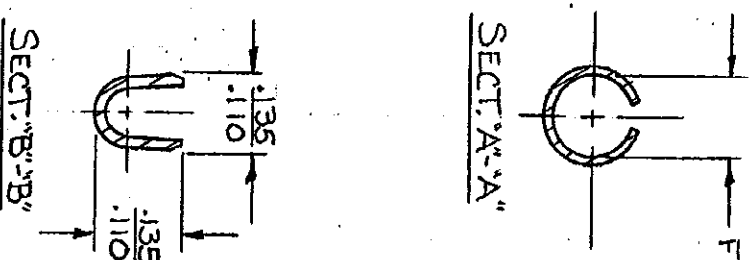
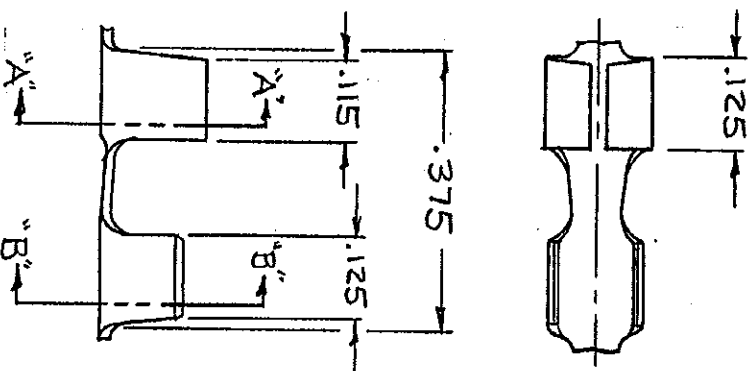


NUMBER

40652



CONTINUOUS STRIP ON REELS

PART NO.	MPTE194	PLATING	STOCK THK.	
40652	BRASS	NONE	.016	OBSOLETE
40652-1	BE. CU.	TR	.016	

DIMENSIONS IN INCHES. DO NOT SCALE PRINT.

G2	ECR-24-203675	B/N/D	4/9/24
G	REACT -1 AF-7812		2/4/52
F	OBS -1 AF-3164		5-11-82
E	REVISED		4-6-76
D	ADDED -1 (03-18-76)		3-7-76
C	REDRAWN		5-4-72
LTR	REVISION RECORD	ECN	DATE
DR	B. BANK	DESIGN	5-8-72
CHK	KID SMITH	APP	8.0.5550V 5-8-72

©1972 BY AMP INCORPORATED. ALL RIGHTS RESERVED. AMP PRODUCTS COVERED BY PATENTS AND/OR PATENTS PENDING MATERIAL AND FINISH

SEE TABLE

AMP INCORPORATED
HARRISBURG, PENNA.CUSTOMER COPY
REFERENCE ONLY

WIRE RANGE	INSULATION	CLASS	TYPE	LOC	NO	REV
#20-18	-#	-#	-#	A	40652	G2
TOLERANCE EXCEPT AS NOTED ± .015	SCALE	NAME	.119 DIA. PIN RECEPTACLE			

PRINTED BY

50