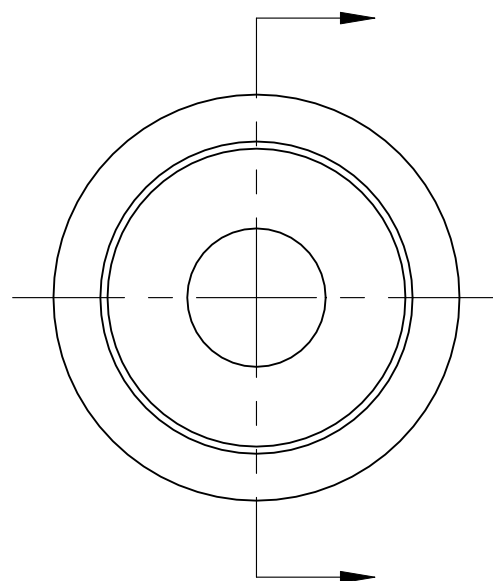
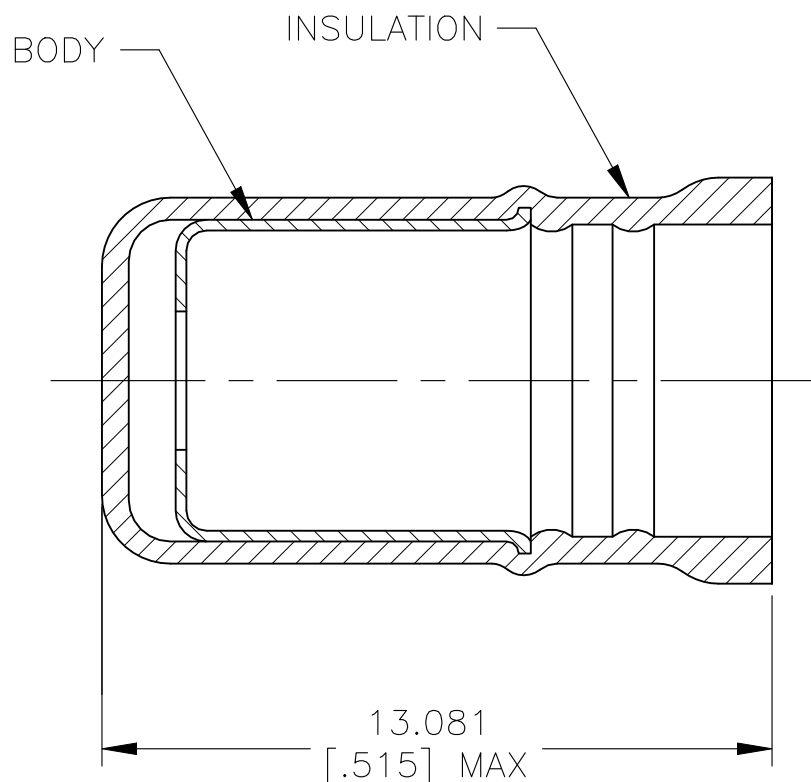


© - TE Connectivity. All Rights Reserved.

REVISIONS

P	LTR	DESCRIPTION	DATE	DWN	APVD
P		ECR-23-194830	28DEC2023	LP	DSC



- USE FOR AN UNSTRIPPED (SINGLE) WIRE END ONLY.
 - WIRE INSUL DIA, 3.810-5.334 [.150-.210]
- 3 MATERIAL
BODY - COPPER PER ASTM B152
INSULATION - NYLON
- 4 FINISH:
BODY - TIN PLATE 0.00254[.000100] MIN EXT THK PER ASTM B545
INSULATION COLOR - YELLOW

1000	LOOSE PIECE	324487
QTY	PACKAGE TYPE	PART NO

AMP INCORPORATED CUSTOMER SERVICE SYSTEM		MAX RECOMMENDED OPERATING TEMPERATURE: 105° C [221° F]	THIS DRAWING IS A CONTROLLED DOCUMENT.		DWN L OLMEDA 14FEB95	STE TE Connectivity				
FOR ADDITIONAL PRODUCT INFORMATION OR COPIES OF DRAWINGS AND TECHNICAL DOCUMENTS	PRODUCT INFORMATION CENTER 1-800-522-6752	VOLTAGE RATING: -	DIMENSIONS: INCHES	TOLERANCES UNLESS OTHERWISE SPECIFIED:	CHK M ELLIS 14FEB95				NAME SPARE WIRE CAP, YELLOW WIRE INS DIA: 3.810 - 5.334 [.150 - .210]	
FOR APPLICATION TOOLING INFORMATION	TOOLING ASSISTANCE CENTER 1-800-722-1111	CIRCULAR MIL AREA: -		0 PLC ± - 1 PLC ± - 2 PLC ± - 3 PLC ± 0.127[.005] 4 PLC ± -	APVD T MICHELUTTI 14FEB95	PRODUCT SPEC	SIZE	CAGE CODE	DRAWING NO	RESTRICTED TO
FOR ORDER ENTRY	1-800-526-5142		MATERIAL	FINISH			A3	00779	C-324487	
					CUSTOMER DRAWING		SCALE	SHEET	REV	
							8:1	1 OF 1	P	