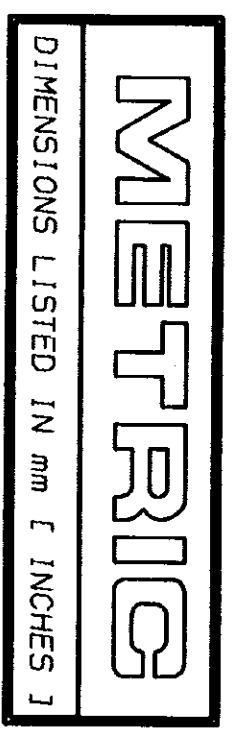
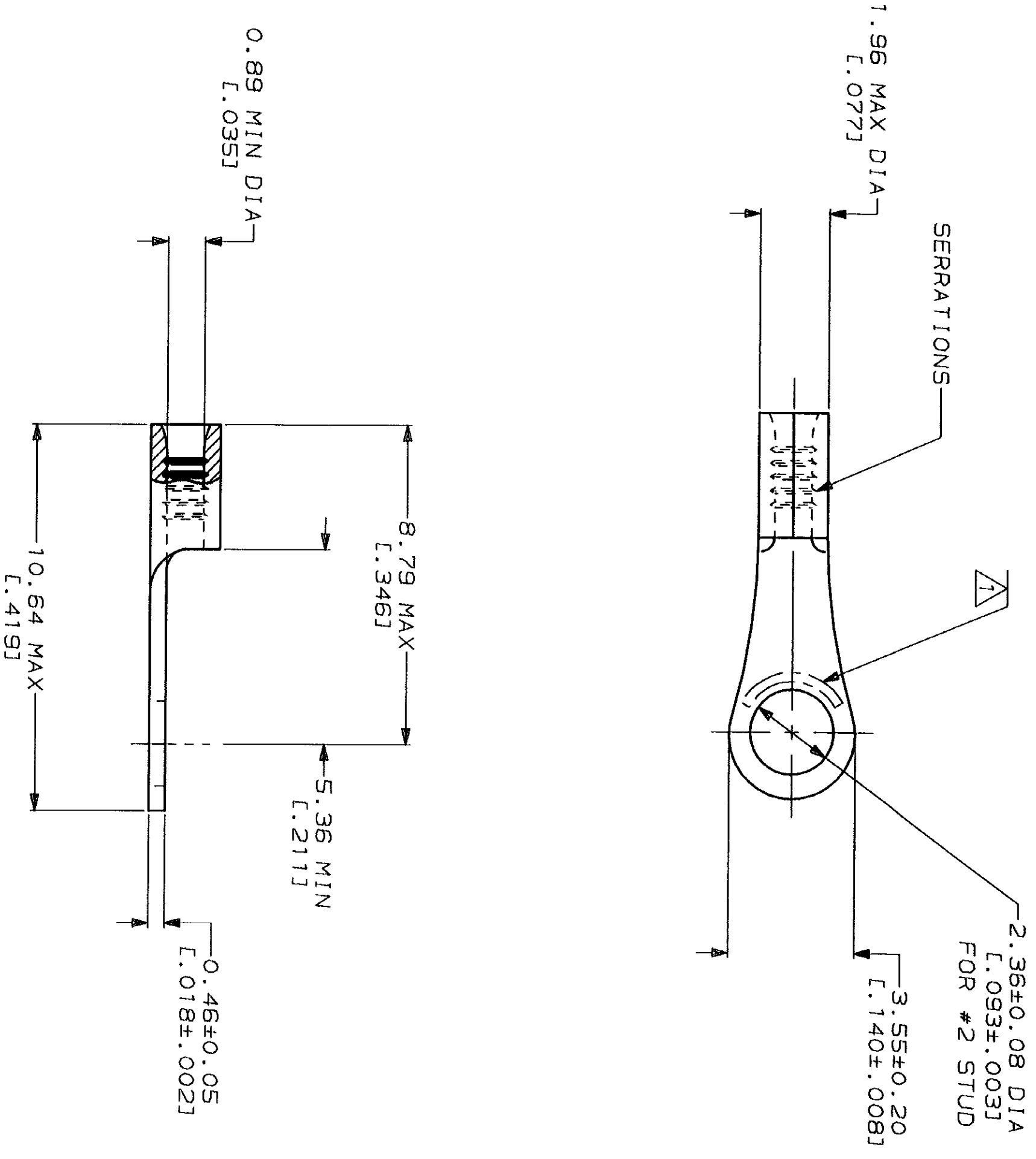


LOC	Q1ST	P	F	ZONE	LTR	REVISIONS	DESCRIPTION	DATE	APPD
G	14					0	RELEASED PER 0720-0008-93	2-2-93	JL DAP



AMP WIRE RANGE 26-22 AWG STRANDED	JL E13288 Listed	NOT LISTED
LR7189 Certified	MILITARY P/N AND CLASS	NOT CERTIFIED
NOT CERTIFIED		NOT APPLICABLE

△ STAMP AMP APPROX AS SHOWN



AMP INCORPORATED
CUSTOMER SERVICE SYSTEMS

FOR ADDITIONAL
PRODUCT INFORMATION OR
COPIES OF DRAWINGS
AND TECHNICAL DOCUMENTS
1-800-522-6752

FOR APPLICATION
TOOLING INFORMATION
1-800-722-1111

FOR ORDER ENTRY
1-800-526-5142

MAX RECOMMENDED OPERATING
TEMPERATURE:
170°C MAX

VOLTAGE RATING:
NOT APPLICABLE

WIRE CROSS SECTIONAL AREA RANGE:
0.1-0.41mm² [202-810] CIR MILS
STRANDED

THIS DRAWING IS A CONTROLLED DOCUMENT FOR
AMP INCORPORATED. IT IS SUBJECT TO CHANGE
AND THE CONTROLLING ENGINEERING ORGANIZATION
SHOULD BE CONSULTED FOR THE LATEST REVISION.

DO NOT SCALE PRINT.
UNLESS SPECIFIED
DIMENSIONS IN mm [INCHES]
TOLERANCES ON:
2 PLG DEC ±
3 PLG DEC ±
ANGLES

MATERIAL
COPPER PER
ASTM B-152
ANNEALED

FINISH
TIN PLATE
0.00254 [0.00100] MIN
THK PER MIL-T-10727

DR 2-2-93 TA BRINKMAN	NAME
CHK 2-2-93 DA PATTERSON	
APPD 2-2-93 DE MILLER	
APPD 2-2-93 JL MECKLEY	
PRODUCT SPEC	
APPLICATION SPEC	
WEIGHT	

AMP
AMP Incorporated
Harrisburg, PA 17105-3608

TERMINAL, RING
TONGUE, BUDGET

SIZE
SCALE 8:1

CAGE CODE
00779

DRAWING NO
322771

SHEET
1 OF 1