

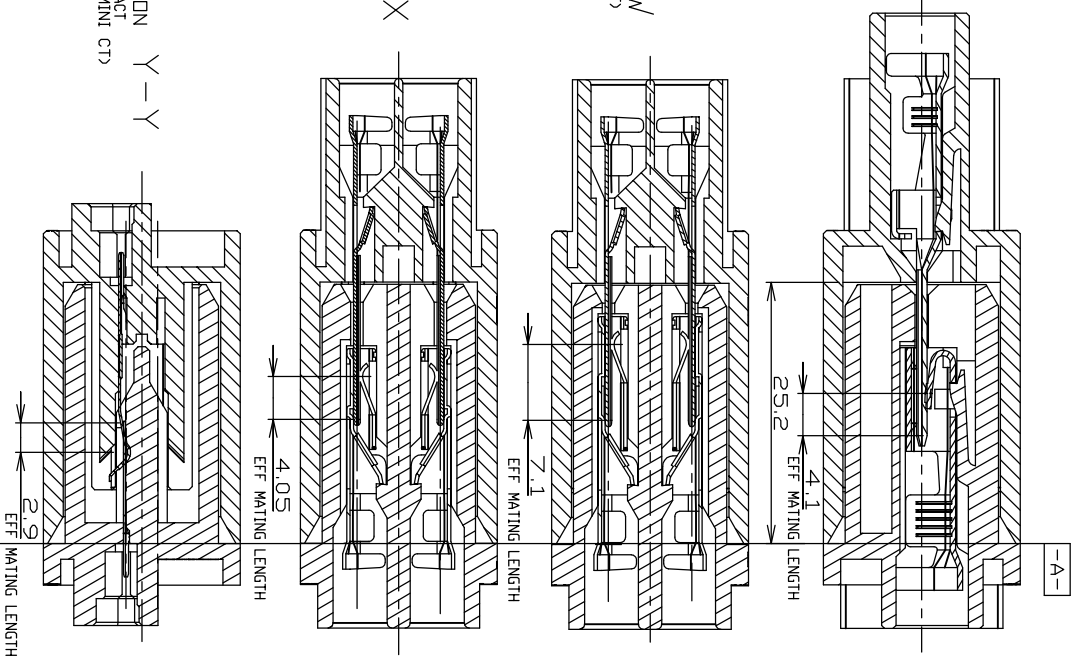
SECTION V - V
 AC CONTACT
 (DYNAMIC CONTACT)

SECTION W - W
 (POWER GROUND CONTACT)

SECTION X - X
 (POWER CONTACT)

SECTION Y - Y
 DC CONTACT
 (1.5mm MINI CT)

MATED CONDITION



THIS DRAWING IS A CONTROL COPY. HOLDING FOR TYCO ELECTRONICS CORPORATION.
 IT IS SUBJECT TO BE CANCELLED FOR THE LATEST REVISION.
 DIMENSIONS: TOLERANCES UNLESS OTHERWISE SPECIFIED:
 0 PLC ±
 1 PLC ±
 2 PLC ±
 3 PLC ±
 FINISH

APVD	CHK	APVD	NAME
PRODUCT SPEC	APPLICATOR SPEC	WEIGHT	CUSTOMER DRAWING
<p>tyco Electronics</p> <p>PLUG ASS'Y for 1.5mm MINI CT HIGH CURRENT HYBRID DRAWER CONNECTOR</p>		<p>Tyco Electronics Corporation Shanghai, PRC</p>	
SIZE	CAGE CODE	DRAWING NO	RESTRICTED 3D
A300779	G	292237	