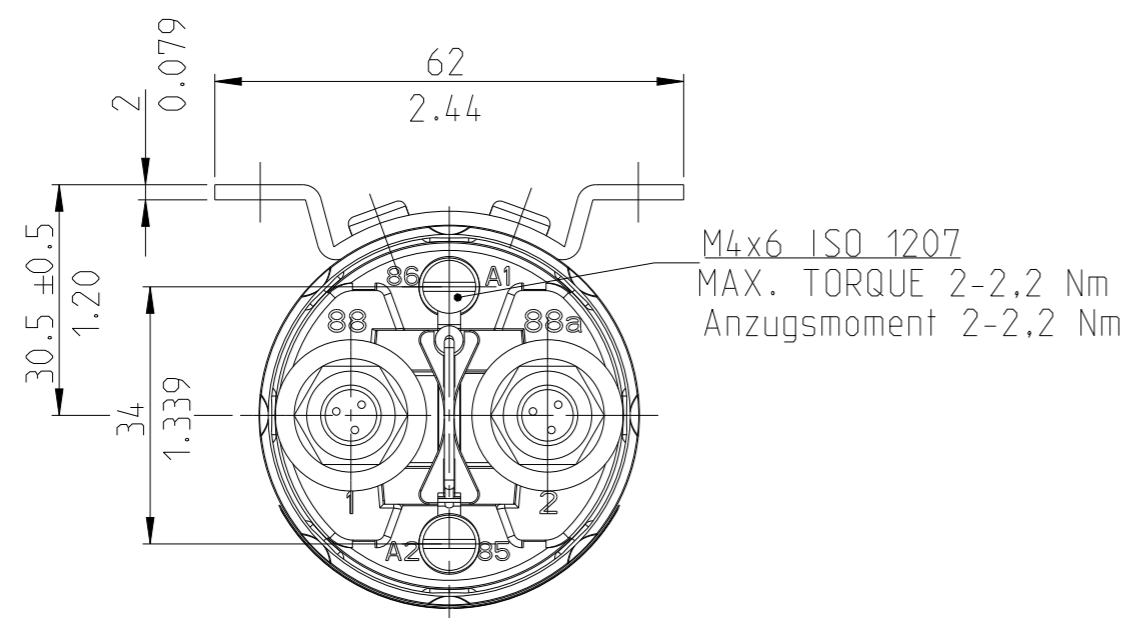
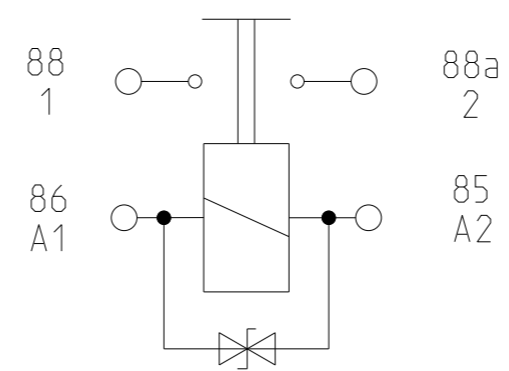


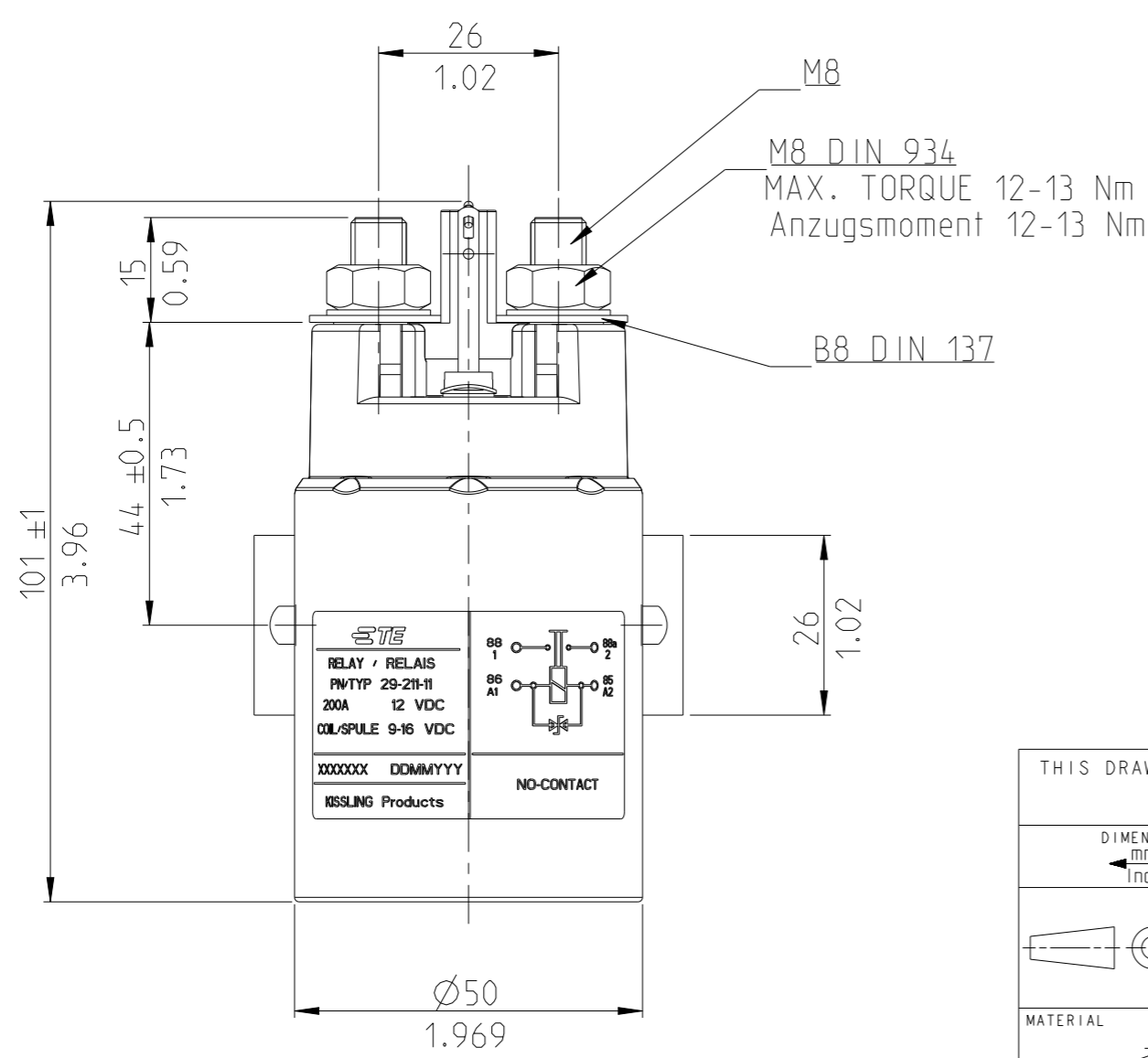
| P | LTR | DESCRIPTION | DATE | DWN | APVD |
|---|-----|---------------|-------------|-----------|-------|
| | A | ECN-24-253618 | TE STANDARD | 28FEB2024 | KS RB |
| | | | | | |
| | | | | | |



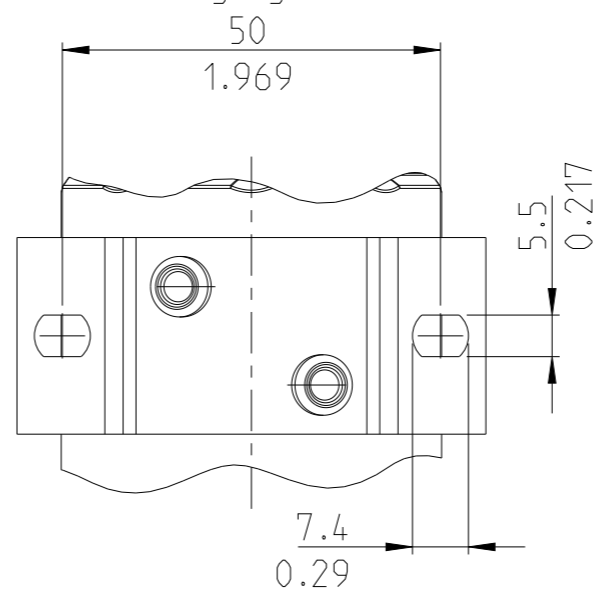
CIRCUIT DIAGRAM
Schaltbild



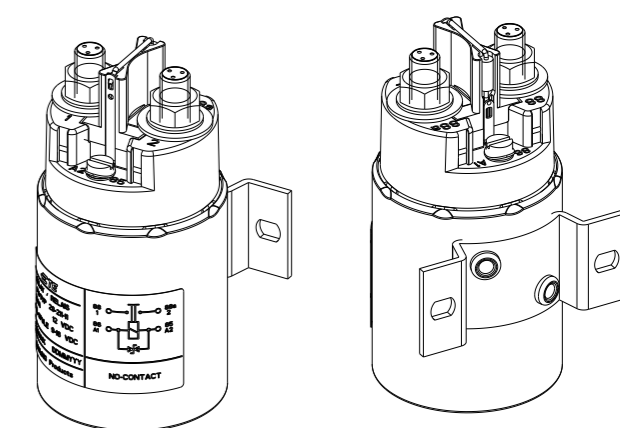
NOTE
Bemerkungen:
1 TE-CONNECTIVITY ORDER-NUMBER
TE-connectivity Bestellnummer



MOUNTING DIMENSION
Befestigungsmaße



ISO 1:2



THIS DRAWING IS A CONTROLLED DOCUMENT.

| | |
|---------------------------|--|
| DIMENSIONS: mm Inch | TOLERANCES UNLESS OTHERWISE SPECIFIED: DIN ISO 2768 cL |
| | 0 PLC ±- 1 PLC ±- 2 PLC ±- 3 PLC ±0.010 4 PLC ±0.03 ANGLES ±0°30' |
| MATERIAL | FINISH |
| - | - |

| | | |
|------------------|----------|-----------|
| DWN | N.Mielke | 18NOV2014 |
| CHK | N.Mielke | 18SEP2019 |
| APVD | G.Kaiser | 19SEP2019 |
| PRODUCT SPEC | | |
| APPLICATION SPEC | | |
| WEIGHT | | |
| CUSTOMER DRAWING | | |

| | | | | |
|---|-----------|-------------|---|---------|
| K1010834 | 1 | A | 200AMP. POWER RELAY (12VDC) 200AMP Leistungsrelais (12VDC) | 1 |
| TE ORDER-NO. | REV. | | DESCRIPTION | ITEM NO |
| TE TE Connectivity | | | | |
| NAME 200AMP. POWER RELAY (12VDC) 200AMP Leistungsrelais (12VDC) | | | | |
| SIZE | CAGE CODE | DRAWING NO | RESTRICTED TO | |
| A3 | 00779 | C-29-211-11 | - | |
| SCALE | | | SHEET | REV |
| 1:1 | | | 1 OF 2 | A |

REVISIONS

| P | LTR | DESCRIPTION | DATE | DWN | APVD |
|---|-----|-------------|------|-----|------|
| - | | SEE SHEET 1 | - | - | - |
| | | | | | |
| | | | | | |

TECHNICAL DATA

ENVIRONMENTAL CHARACTERISTICS

TEMPERATURE RANGE -40°C TO +85°C
 MAX. ALTITUDE RATING 15000m
 PROTECTION IP67 (6 FT/ 0,2BAR 1 MIN.) I.A.W. IEC 529
 IP6K9K DIN 40050 PART 9 AND I.A.W. IEC 529
 SHOCK 6G/ 11 msec
 VIBRATION 4G/50-2000 Hz
 RESISTANCERESISTANT TO COMMON OILS, FUELS, HYDRAULICSLIDING,
 FLUID SLIDING, ALCOHOL AND FIRE EXTINGUISHING AGENTS

ELECTRICAL CHARACTERISTICS

MIN.INSULATION RESISTANCE INITIAL 100 MEGOHMS
 AFTER LIFE OR ENVIRONMENTAL 50 MEGOHMS
 HIGH VOLTAGE RESISTANCE 1050 V FOR 1 MIN
 MAX.CONTACT DROP INITIAL 0.15 VDC
 AFTER LIFE TEST 0.175 VDC
 OVERLOAD 1600 AMP FOR 1 SEC, 400 AMP FOR 20 SEC
 DUTY RATING 200 A-

RATED CONTACT LOAD

RESISTIVE LOAD 200 000 CYCLES
 MECHANICAL LIFE 2 000 000 CYCLES

COIL DATA

VOLTAGE RANGE 9-16 VDC
 NOMINAL VOLTAGE 12 VDC
 PICK UP VOLTAGE MAX 9 VDC FULL TEMP. RANGE
 DROP OUT VOLTAGE ≤ 2 VDC
 COIL RESISTANCE 15 OHMS ±10%
 COIL CURRENT 0.8 AMP
 COIL POWER ~10 W

TIME MILLISECONDS-MAX.

OPERATE MAX. 40 MS
 BOUNCE MAX. 5 MS
 RELEASE MAX. 20 MS

WEIGHT 0.80 KG = 1.76 POUND MAX.

WIRE SECTION (AT NOMINAL LOAD) MIN. 70mm² / 0.109 sq.in./ AWG 00

MOUNTING POSITION OPTIONAL

SUBJECT TO CHANGE

Technische Daten

Allgemeine Daten

Umgebungstemperatur -40°C bis +85°C
 Max. Arbeitshoehe 15000m
 Schutzart IP67 (6 ft/ 0.2 bar 1 min.) I.A.W. IEC 529
 IP6k9k nach DIN 40050 Teil 9 und I.A.W. IEC 529
 Schock 6g/ 11 msec
 Vibration 4g/50-2000 hz
 Bestaendigkeit Bestaendig gegen gebraeuchliche Oele, Kraftstoffe,
 Hydraulikfluessigkeiten, Alkohol und Feuerloeschmittel

Elektrische Daten

Min. Isolationswiderstand 100 MOhm
 Isolationswiderstand nach Belastung 50 MOhm
 Hochspannungsfestigkeit 1050 V fuer 1 min
 Max. Kontaktspannungsabfall 0,15 VDC
 Kontaktspannungsabfall nach Lebensdauer 0,175 VDC
 Überlast 1600 A- für 1s 400 A- für 20s
 Dauerstrom 200 A-

Lebensdauer

Nennlast (ohmsch) 200.000 Schaltspiele
 Mechanisch 2 000 000 Schaltspiele

Spulendaten

Betriebsspannung 9-16 VDC
 Nennspannung 12 VDC
 Max. Anzugsspannung 9 VDC (ges. Temperaturbereich)
 Trennspannung ≤ 2 VDC
 Spulenwiderstand 15 Ohm ±10%
 Spulenstrom 0.8A
 Spulenleistung ~10 W

Schaltzeiten



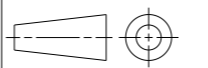
Anzugszeit einschl. Prellzeit max. 40 ms
 Prellzeit max. 5 ms
 Abfallzeit max. 20 ms

Gewicht 0.80 kg = 1.76 pfund max.

Anschlussquerschnitt bei Nennlast min. 70 mm² / 0.109 sq.in/ AWG 00

Einbaulage beliebig.

Änderungen Vorbehalten

| | | | | |
|--|--|-------------------------------|---|---------------------------|
| THIS DRAWING IS A CONTROLLED DOCUMENT. | | DWN N.Mielke 18NOV2014 |  TE Connectivity | |
| DIMENSIONS:  | | CHK N.Mielke 18SEP2019 | | |
| TOLERANCES UNLESS OTHERWISE SPECIFIED: DIN ISO 2768 cL | | APVD G.Kaiser 19SEP2019 | NAME 200AMP. POWER RELAY (12VDC) 200AMP Leistungsrelais (12VDC) | |
|  | | PRODUCT SPEC | RESTRICTED TO | |
| MATERIAL - | | FINISH - | WEIGHT - | SIZE A3 |
| 0 PLC ±- 1 PLC ±- 2 PLC ±- 3 PLC ±0.010 4 PLC ±0.03 ANGLES ±0°30' | | APPLICATION SPEC | CAGE CODE 00779 | DRAWING NO G=29-211-11 |
| MATERIAL - | | FINISH - | WEIGHT - | RESTRICTED TO - |
| | | CUSTOMER DRAWING | SCALE 1:1 | SHEET 2 OF 2 |
| | | | | REV A |