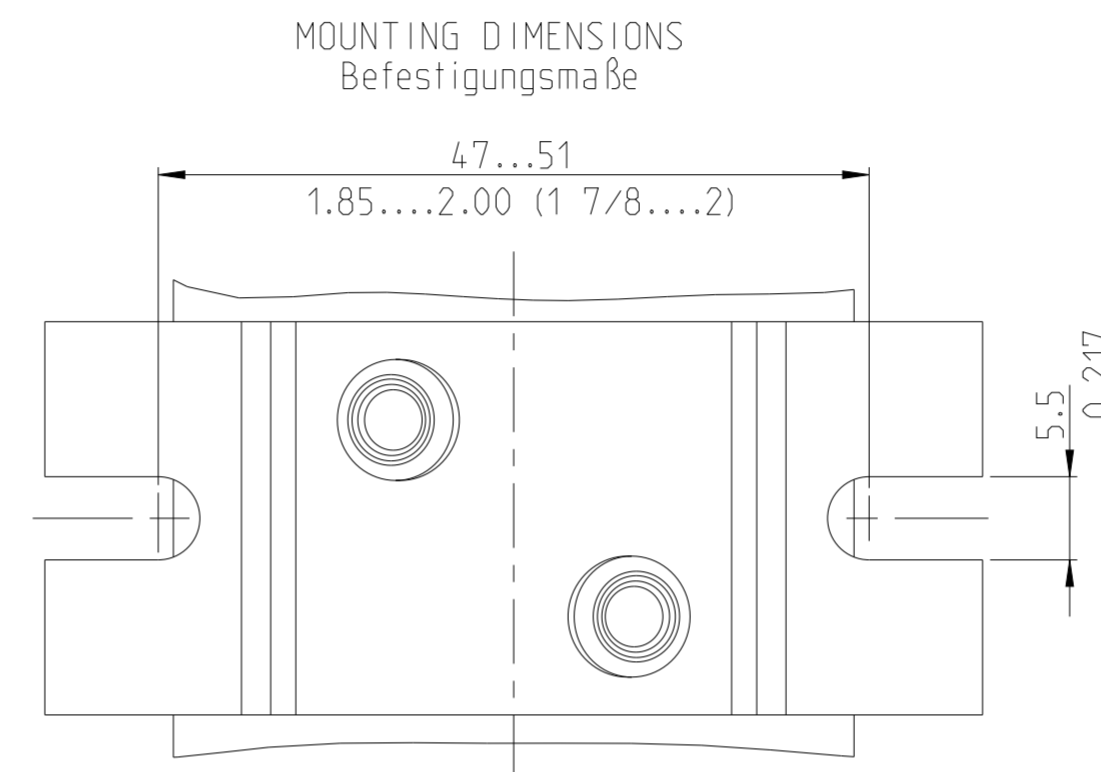
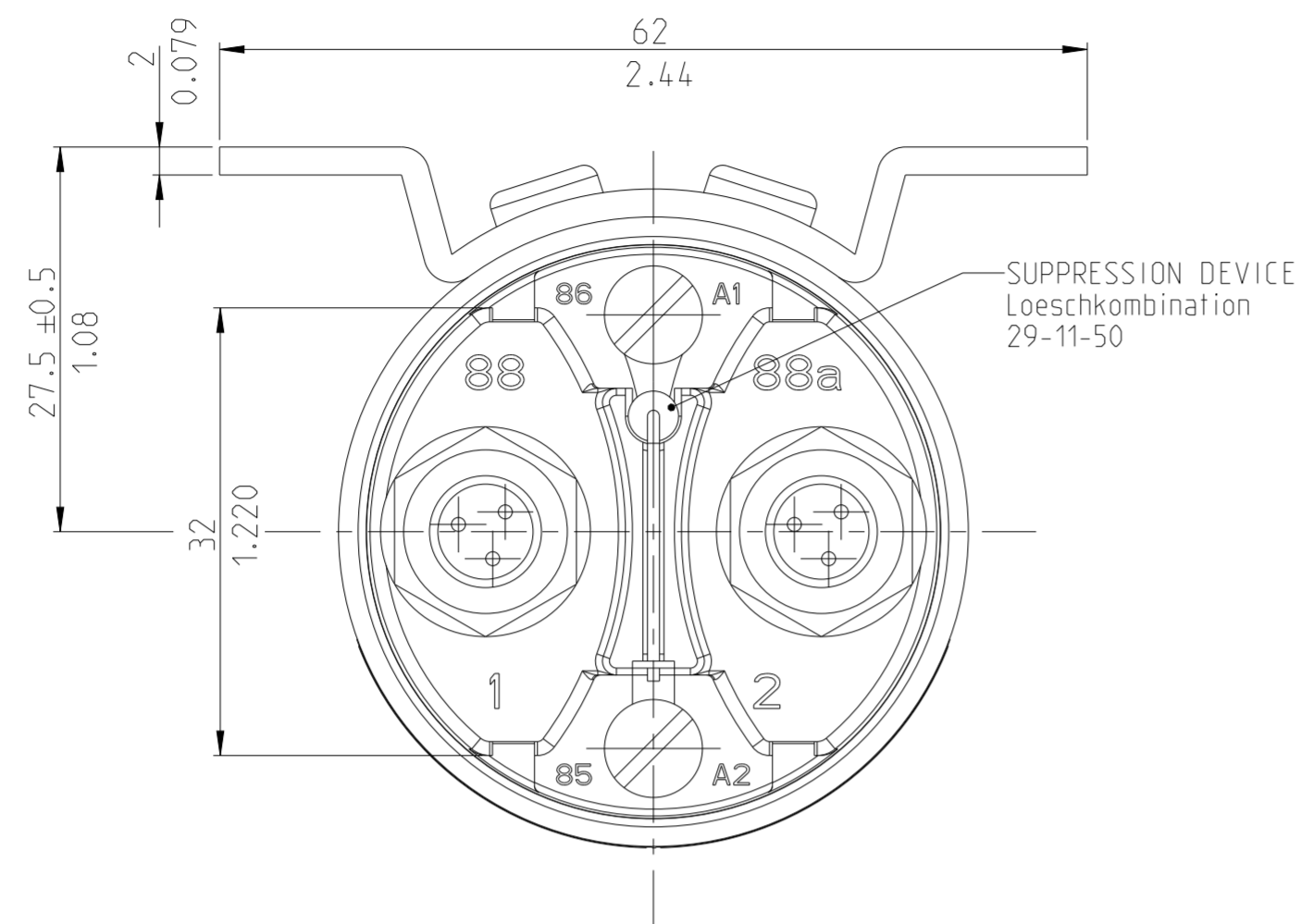
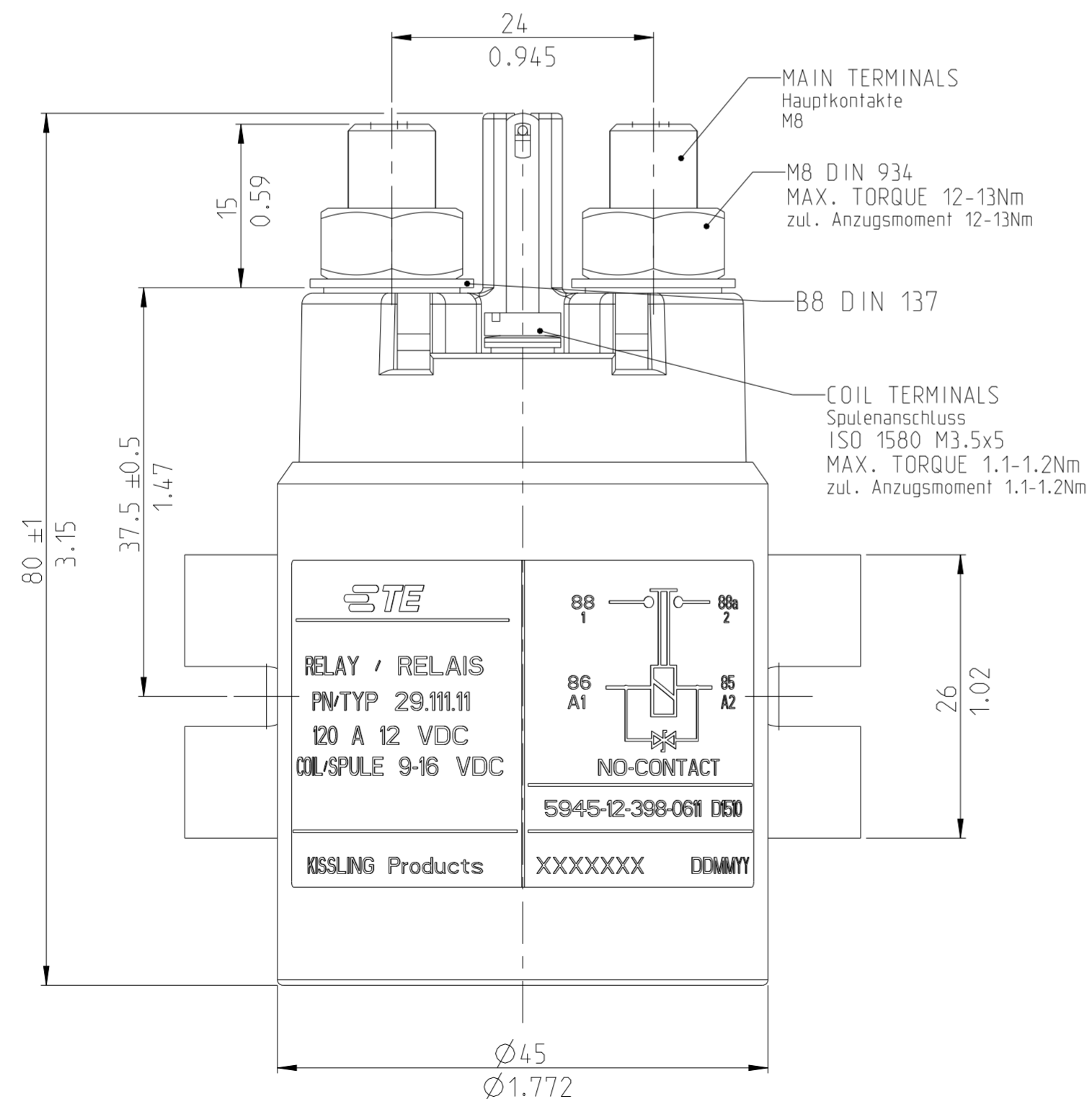


REVISIONS					
P	LTR	DESCRIPTION	DATE	DWN	APVD
	A	TE STANDARD	27DEC2023	KS	RB

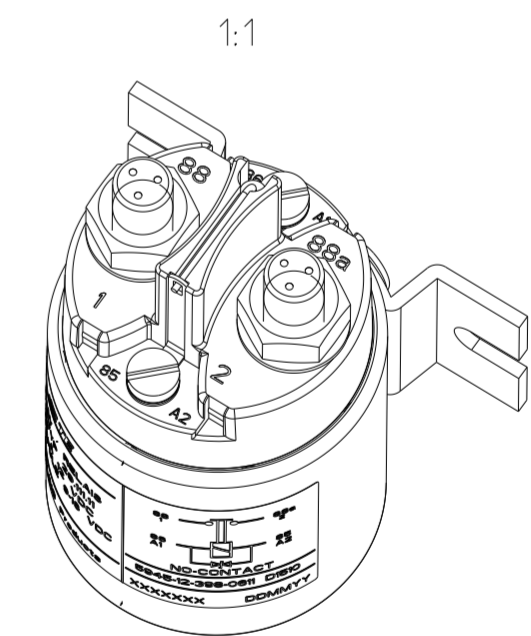
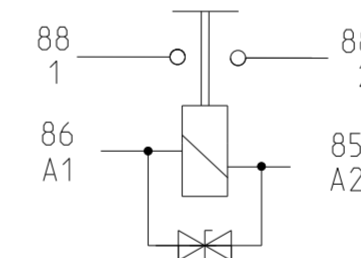


NOTES
Bemerkungen

1 TE-CONNECTIVITY ORDER-NUMBER
TE-Connectivity Bestellnummer



CIRCUIT DIAGRAM
Schaltbild



THIS DRAWING IS A CONTROLLED DOCUMENT.

DIMENSIONS:
mm
Inch

TOLERANCES UNLESS OTHERWISE SPECIFIED:
DIN ISO 2768 cl



0 PLC ±
1 PLC ±
2 PLC ±
3 PLC ±
4 PLC ±
ANGLES ±
FINISH

MATERIAL

DWN N.Mielke 13NOV2015
CHK N.Mielke 06OCT2020
APVD G.Kaiser 06OCT2020
PRODUCT SPEC

APPLICATION SPEC
WEIGHT

CUSTOMER DRAWING

K1060487	1	A	120 AMP POWER RELAY (12VDC) 120 AMP Leistungsrelais (12VDC)	1
PART/TCPN NO.	REV.		DESCRIPTION	ITEM NO.

STE TE Connectivity

NAME
120 AMP POWER RELAY (12VDC)
120 AMP Leistungsrelais (12VDC)

SIZE A2 CAGE CODE 00779 DRAWING NO. C-29-111-11 RESTRICTED TO -

SCALE 5:1 SHEET 1 OF 2 REV A

REVISIONS

P	LTR	DESCRIPTION	DATE	DWN	APVD
-		SEE SHEET 1	-	-	-

TECHNICAL DATA

ENVIRONMENTAL CHARACTERISTICS

TEMPERATURE RANGE.....-40°C TO +85°C (-40°F TO +185°F)
 MAX. ALTITUDE RATING.....50 000 FT
 SEAL INTERIOR IP67 (6FEET/0,2BAR-1MIN.) I.A.W. IEC 529
 IP6K9K (STEAM PRESSURE) DIN 40050 PART 9 AND I.A.W. IEC 529
 CONNECTIONS.....IP 00 I.A.W. IEC 529
 SHOCK G-LEVEL..... 6G/ 11 MSEC
 VIBRATION 4G/ 50-2000 Hz
 RESISTANT AGAINST COMMON OILS, FUELS, HYDRAULIC FLUIDS,
 ALCOHOL AND FIRE EXTINGUISHING AGENTS

ELECTRICAL CHARACTERISTICS

MIN. INSULATION RESISTANCE INITIAL100 MEGOHMS
 AFTER LIVE OR ENVIRONMENTAL..... 50 MEGOHMS
 DIELECTRIC WITHSTANDING VOLTAGE SEA LEVEL 1 MINUTE.....1050 VOLTS
 ALTITUDE 1 MINUTE.....500 VOLTS
 MAX. CONTACT DROP, INITIAL..... 0.15 VDC
 AFTER LIFE TEST..... 0.175 VDC
 OVERLOAD.....1000 AMP FOR 1 SEC, 250AMP FOR 20 SEC
 DUTY RATING120 AMP CONTINUOUS

RATED CONTACT LOAD (28 VDC)

RESISTIVE LOAD 200 000 CYCLES WITH 75 A
 ENDURANCE2 000 000 CYCLES

COIL DATA

VOLTAGE RANGE..... 9 TO 16 VDC
 NOMINAL VOLTAGE..... 12 VDC
 PICK UP VOLTAGE MAX..... 9 VDC FULL TEMP. RANGE
 DROP OUT VOLTAGE MAX..... ≤ 2 VDC FULL TEMP. RANGE
 COIL RESISTANCE.....20 OHMS ±10%
 COIL CURRENT APPROX. 0.6 AMP
 COIL POWER APPROX. 7 W

TIME MILLISECONDS-MAX (NO)

OPERATE 35
 BOUNCE 5
 RELEASE 15

WEIGHT..... 0.48 Kg = 1.06 POUND MAX.

WIRE SECTION (AT NOMINAL LOAD)..... MIN. 25mm²/ 0.039 sq.in./ AWG 3

MOUNTING POSITION.....OPTIONAL

SUBJECT TO CHANGE

Technische Daten

Allgemeine Daten

Umgebungstemperatur..... -40°C bis +85°C (-40°F bis +185°F)
 Max. Arbeitshöhe.....15000 m
 Schutzart Innenraum..... IP67 (0,2 bar; 1 min) nach IEC 529
 IP6K9K (Dampfdruck) DIN 40050 TEIL 9 UND nach IEC 529
 Anschluesse.....IP00 nach IEC 529
 Schock 6g/ 11 m sec
 Vibration 4g/ 50-2000 Hz
 Beständigkeit Beständig gegen gebräuchliche Öle, Kraftstoffe,
 Hydraulikflüssigkeiten, Alkohol und Feuerlöschmittel

Elektrische Daten

Min. Isolationswiderstand..... 100 MOhm
 Isolationswiderstand nach Belastung 50 MOhm
 Hochspannungsfestigkeit Meeresspiegel 1 min..... 1050 V
 Arbeitshöhe 1 min 500 V
 Max. Kontaktspannungsabfall..... 0,15 V
 Kontaktspannungsabfall nach Lebensdauer..... 0,175 V
 Überlast..... 1000AMP für 1 , 250AMP für 20
 Dauerstrom (Nennlast)..... 120 A-

Lebensdauer

Nennlast (ohmsch)..... 200 000 Schaltspiele
 Mechanisch..... 2 000 000 Schaltspiele

Spulendaten

Betriebsspannung..... 9 bis 16 VDC
 Nennspannung..... 12 VDC
 Max. Anzugsspannung..... 9 VDC ges. Temperaturbereich
 Trennspannung..... ≤ 2 VDC ges. Temperaturbereich
 Spulenwiderstand..... 20 Ohm ±10 %
 Spulenstrom ca. 0,6 A
 Spulenleistung ca. 7 W

Schaltzeiten


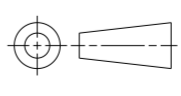
Anzugszeit einschl. Prellzeit..... max. 35 ms
 Prellzeit..... max. 5 ms
 Abfallzeit..... max. 15 ms

Gewicht..... 0,48 Kg = 1.06 pfund max.

Anschlußquerschnitt bei Nennlast..... min. 25mm²/ 0.039 sq.in./ AWG 3

Einbaulage.....beliebig

Änderungen vorbehalten

THIS DRAWING IS A CONTROLLED DOCUMENT.		DWN N.Mielke 13NOV2015	 TE Connectivity	
		CHK N.Mielke 06OCT2020		
DIMENSIONS: mm Inch		TOLERANCES UNLESS OTHERWISE SPECIFIED: DIN ISO 2768 ct		NAME 120 AMP POWER RELAY (12VDC) 120 AMP Leistungsrelais (12VDC)
		APVD G.Kaiser 06OCT2020	PRODUCT SPEC	RESTRICTED TO
		APPLICATION SPEC		SIZE A2
		WEIGHT		CAGE CODE 00779
		CUSTOMER DRAWING		DRAWING NO. C-29-111-11
		SCALE 5:1		SHEET 2 OF 2
				REV A