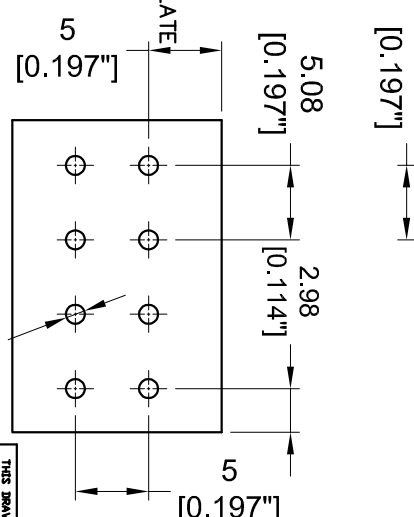


| Callout | Component | Part No. |
|---------|-----------|-----------|
| ④ | SPRING | 2834079-7 |
| ③ | COVER | 2834079-6 |
| ② | CONTACT | 2834079-5 |
| ① | HOUSING | 2834079-4 |



| Length (mm) | Length (in) | Part No. |
|-------------|-------------|-----------|
| 41.64 | 1.635 | 2834079-7 |
| 36.56 | 1.439 | 2834079-6 |
| 31.48 | 1.239 | 2834079-5 |
| 26.40 | 1.039 | 2834079-4 |
| 21.32 | 0.839 | 2834079-3 |
| 16.24 | 0.639 | 2834079-2 |
| 11.16 | 0.439 | 2834079-1 |

- NOTES :**
- 1. MATERIALS AND FINISH:
 - HOUSING: PA66
 - CONTACTS: BRASS, FINISH: TIN OVER NICKEL UNDERPLATE
 - 2. MUST COMPLY WITH DIRECTIVE 2002/95/EC (RoHS)
 - 3. WIRE TYPES AND SIZES ACCEPTED
 - 4. WIRE RANGE: 14AWG~28AWG.
 - 5. STRIP LENGTH: 10mm
 - 6. PACKAGED IN TRAY.
 - 7. CURRENT RATING: 16amp AC300V.
 - 8. OPERATION TEMPERATURE: -40°C TO +105°C
 - 9. THIS PART NO. IS THE SAME STRUCTURE AS THE SERIES: 2834079
 - 10. THE DATASHEET AND MORE DETAILS PLEASE FOLLOW THE SERIES: 2834079

PCB Layout

Ø1.3 [0.051]

THIS DRAWING IS A CONTROLLED DOCUMENT

STI TE Connectivity

508mm 45° Entry Screwless Connector

DATE: 11/14/16

REV: A