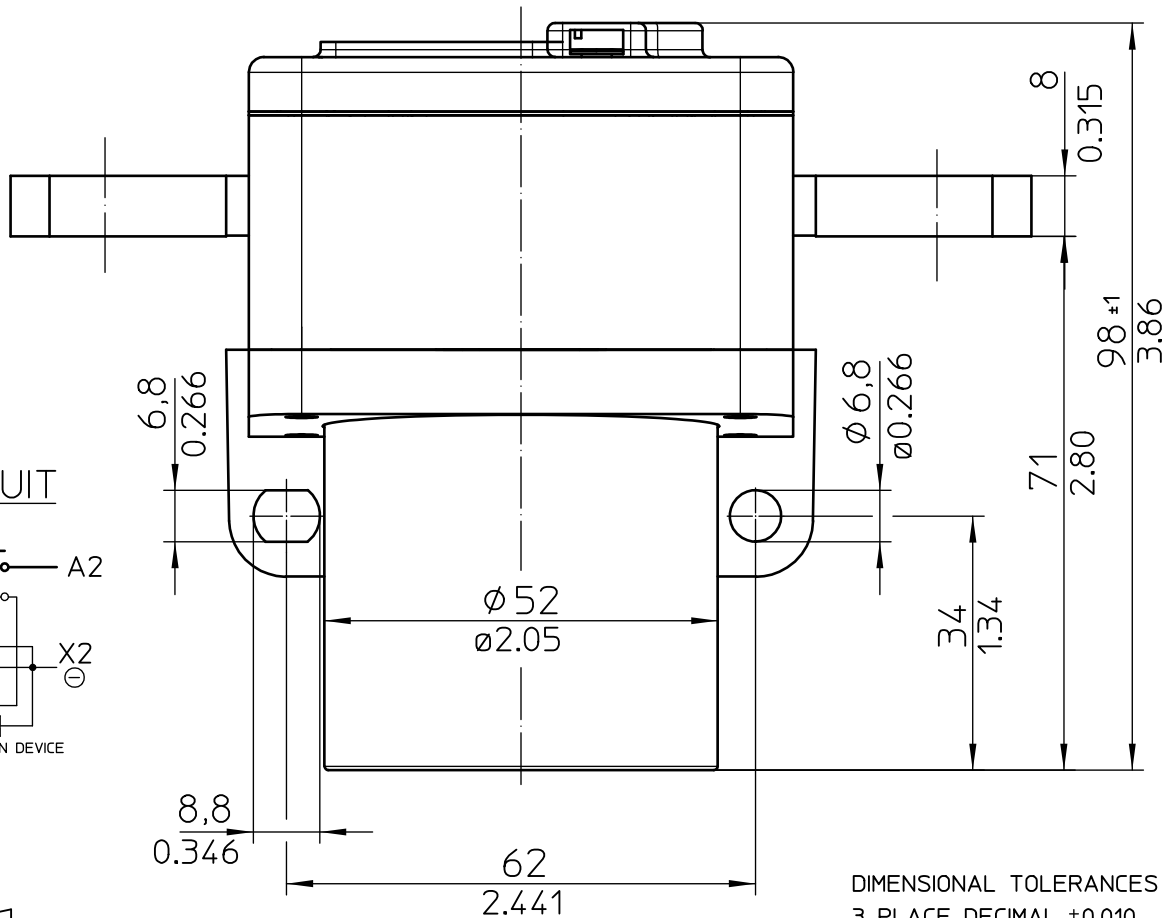
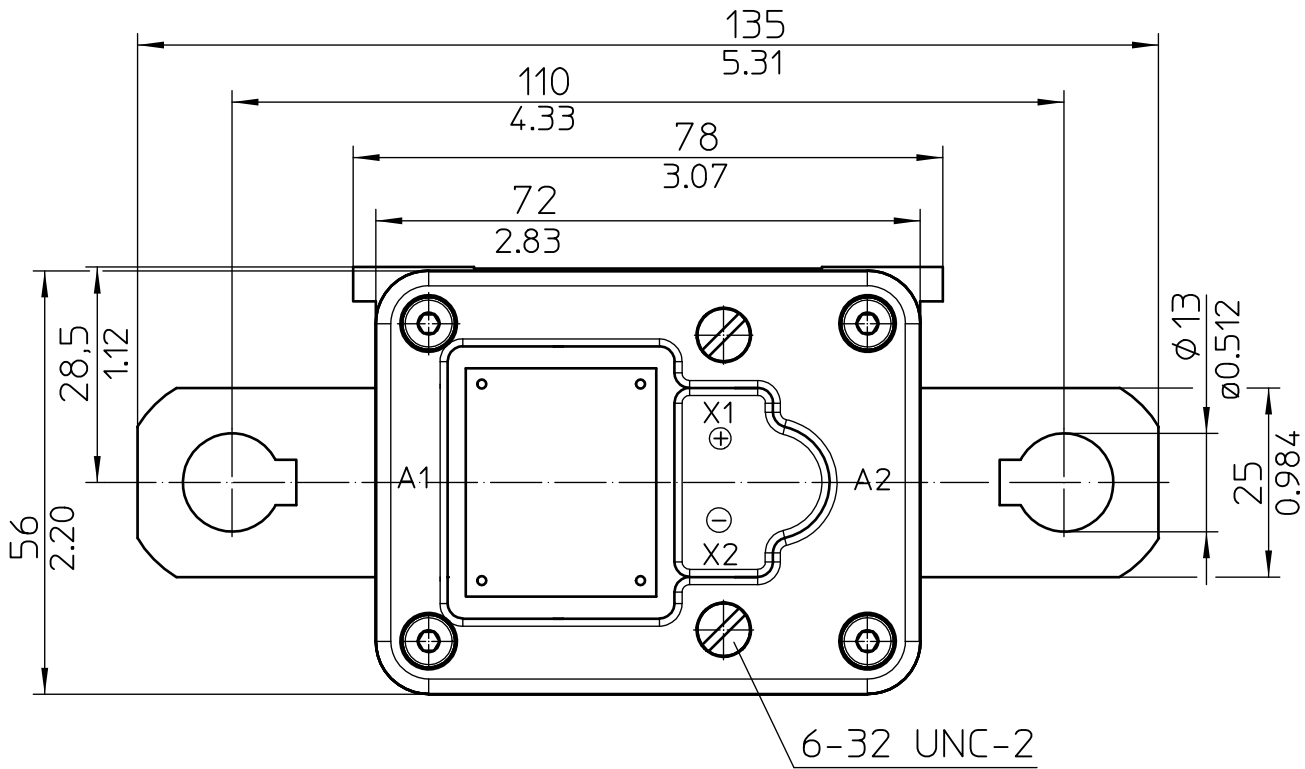
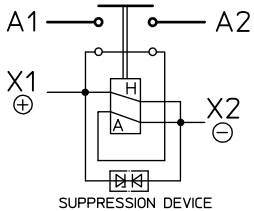


# 500 AMP POWER RELAY (28VDC)

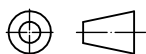
SIDE MOUNTING      ENVIRONMENTALLY SEALED      UNC-VERSION



### CIRCUIT



H= HOLDING COIL  
A= PULL IN COIL



Third Angle Projection

DIMENSIONAL TOLERANCES  
3 PLACE DECIMAL ±0.010  
2 PLACE DECIMAL ±0.03  
ANGULAR ±0°30'

	Date	Name	mm inch	Scale 1:1	 Elektrotechnik - GmbH & Co KG D - 72218 Wildberg	Drawing No:
Drawn	19.06.2006	Hamar				26-05-52
Check	23.06.2006	Grind	General Tolerances DIN ISO 2768 mK		NSN: U.S. ARMY P/N 19200-12-934-604	

# 500 AMP POWER RELAY (28VDC)

SIDE MOUNTING      ENVIRONMENTALLY SEALED      UNC-VERSION

MEETS THE REQUIREMENTS OF MIL-R-6106

ENVIRONMENTAL CHARACTERISTICS

TEMPERATUR RANGE.....-55°C TO +74°C (-67°F TO +165°F)  
 MAX. ALTITUDE RATING.....50 000 FT  
 SEAL.....IEC PUBLICATION 529; IP 67; 6 FT  
 SHOCK G-LEVEL.....MIL-STD-202, TEST METHOD 213, HALF SINE = 11 MSEC/ 30 G  
 VIBRATION ENERGIZED.....MIL-STD-202, TEST CONDITION D = 20 G  
 VIBRATION DE-ENERGIZED.....MIL-STD-202, TEST CONDITION C = 10 G  
 ACCELERATION.....15 G

ELECTRICAL CHARACTERISTICS

MIN. INSULATION RESISTANCE, INITIAL.....100 MEGOHMS  
 AFTER LIFE OR ENVIRONMENTAL.....50 MEGOHMS  
 DIELECTRIC WITHSTANDING VOLTAGE SEA-LEVEL 1 MINUTE.....1050 VOLTS  
 DIELECTRIC WITHSTANDING VOLTAGE ALTITUDE 1 MINUTE.....500 VOLTS  
 MAX. CONTACT DROP INITIAL.....0.15 VOLTS  
 AFTER LIFE TEST.....0.175 VOLTS  
 OVERLOAD.....4000 AMP  
 RUPTURE CURRENT.....5000 AMP  
 DUTY RATING.....500 AMP CONTINUOUS

RATED CONTACT LOAD (28 VDC)

RESISTIVE LOAD.....50 000 CYCLES WITH 500 AMP  
 INDUCTIVE LOAD.....10 000 CYCLES WITH 125 AMP  
 MOTOR LOAD.....50 000 CYCLES WITH 500 AMP  
 MECHANICAL LIFE.....100 000 CYCLES WITH 125 AMP

OPERATING CHARACTERISTICS

COIL DATA

VOLTAGE RANGE.....18-32 VDC  
 NOMINAL VOLTAGE.....28 VDC  
 PICK UP VOLTAGE MAX.....18 VDC FULL TEMP. RANGE  
 RESISTANCE PULL IN COIL.....2.8 OHMS ±20%  
 PULL IN CURRENT MAX......8 AMP FOR 30 MILLISECONDS  
 RESISTANCE HOLDING COIL......82 OHMS ±10%  
 HOLDING CURRENT MAX......0.40 AMP  
 DROP OUT VOLTAGE.....≤7 VDC FULL TEMP. RANGE

TIME-MILLISECONDS-MAX

OPERATE......25  
 RELEASE......20  
 BOUNCE......3,5

WEIGHT.....1,2 KG = 2.7 POUND MAX.

WIRE SECTION (AT NOMINAL LOAD).....MIN. 240 mm<sup>2</sup>/ 0.372 sq.in/ MCM 500

	Date	Name	mm inch	Scale 1:1	 Elektrotechnik - GmbH & Co KG D - 72218 Wildberg	Drawing No:
Drawn	19.06.2006	Hamar				
Check	23.06.2006	Grind	General Tolerances DIN ISO 2768 mK			NSN: U.S. ARMY P/N 19200-12-934-604