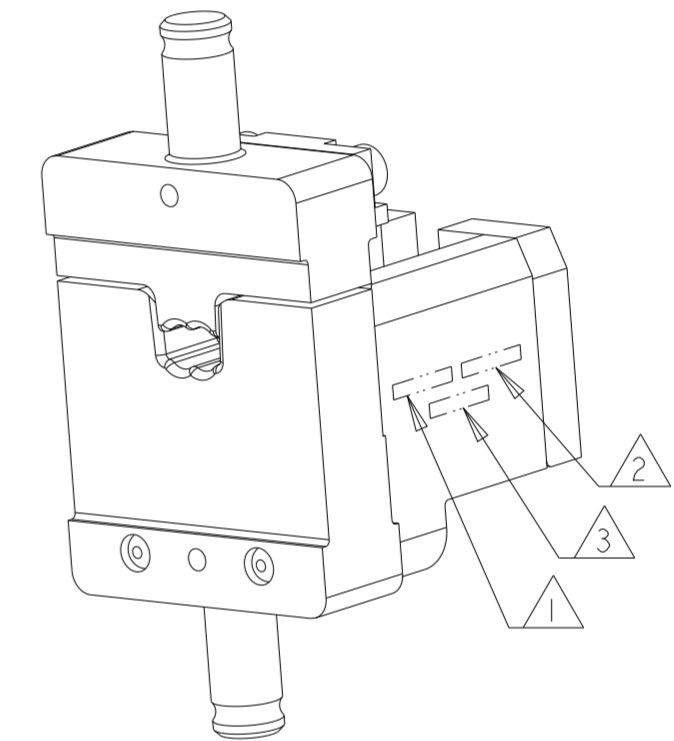
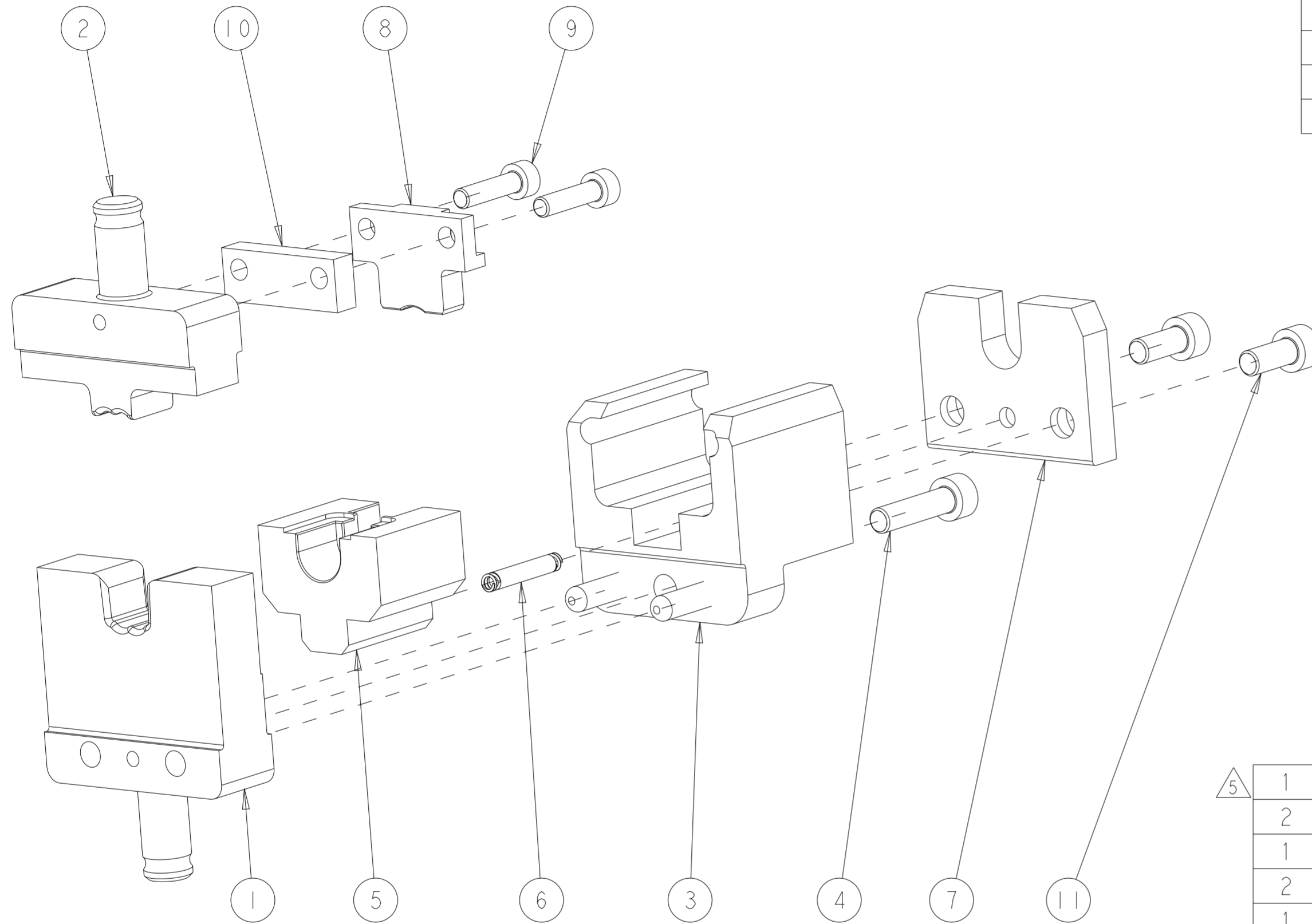


PART NUMBER	REV	DESCRIPTION
2358774-1	A	HV DIE SET
7-2358774-7	A	CRIMP TOOLING KIT
9-2358774-1	A	DIE SET WITH DIE HOLDER

REVISIONS					
P	LTR	DESCRIPTION	DATE	DWN	APVD
A		RELEASED	29JAN2021	LG	TE
A1		REVISED PER ECR-21-003744	26MAR2021	GK	TE
A2		ADDED -91	19JUN2024	RL	YY

TERMINAL NAME	SOCKET CONTACT DIA 6.0
TE TERMINAL PART NUMBER(S)	2328363-4
APPLICATION SPECIFICATION	114-101097
REFERENCE DRAWING	-
USED ON	2305470-1
INSTRUCTION SHEET	-

CABLE SUPPLIER/SPECIFICATION	CABLE SIZE	CRIMP HEIGHT	CRIMP HEIGHT REFERENCE SETTING
COROPLAST	25mm <sup>2</sup>	6.0±0.1	D7



△5	1	-	-	-	2305470-1	HV DIE HOLDER WITH FINE ADJUST	100
	2	-	2	-	1-18023-9	SCR, SKT HD CAP M5 X 12.0	11
	1	-	1	-	2234194-4	SPACER	10
	2	-	2	-	1-18023-3	SCR, SKT HD CAP M4 X 16.0	9
	1	-	1	-	2358822-3	TONK, TERMINAL	8
	1	-	1	-	2234173-3	STOP PLATE	7
	1	-	1	-	7-510500-7	SPRING, COMPRESSION	6
	1	-	1	-	2386239-1	SLIDE CARRIAGE	5
	1	-	1	-	2-18023-1	SCR, SKT HD CAP M5 X 20.0	4
	1	-	1	-	2358817-3	TOOL ASSMBLE	3
	1	1	1	-	2386150-1	INDENTER HVM WM	2
	1	1	1	-	2386202-1	NEST HVM 2W	1
	-91	-77	-1	U/M	PART NO	DESCRIPTION	ITEM NO

- △1 APPLY "DIE SET PN" PER TEC-115-67-2 IN APPROXIMATE AREA SHOWN.
- △2 IDENTIFY PART NUMBER AND REVISION LETTER PER TEC-115-67-2 IN APPROXIMATE AREA SHOWN.
- △3 IDENTIFY SERIAL NUMBER PER TEC-115-67-2 IN APPROXIMATE AREA SHOWN.
- 4. TORQUE RECOMMENDATIONS PER 101-35000 UNLESS OTHERWISE SPECIFIED.
- △5 ITEM NOT SHOWN.

THIS DRAWING IS A CONTROLLED DOCUMENT.

DWN G.Herald 04NOV2019	 TE Connectivity	NAME DIE ASSEMBLY 6.0mm DIA. PIN CONTACT
CHK G.Herald 04NOV2019		
APVD G.Steamayer 04NOV2019		
PRODUCT SPEC		
MATERIAL	SIZE A2	CAGE CODE 00779
DIMENSIONS: mm	DRAWING NO C-2358774	RESTRICTED TO
TOLERANCES UNLESS OTHERWISE SPECIFIED: 0 PLC ± 1 PLC ± 2 PLC ± 3 PLC ± 4 PLC ± ANGLES ± FINISH	SCALE 3:2	SHEET 1 OF 1
MATERIAL	WEIGHT	REV A2
CUSTOMER ACCESSIBLE PRODUCTION DRAWING		