

THIS DRAWING IS UNPUBLISHED.

RELEASED FOR PUBLICATION

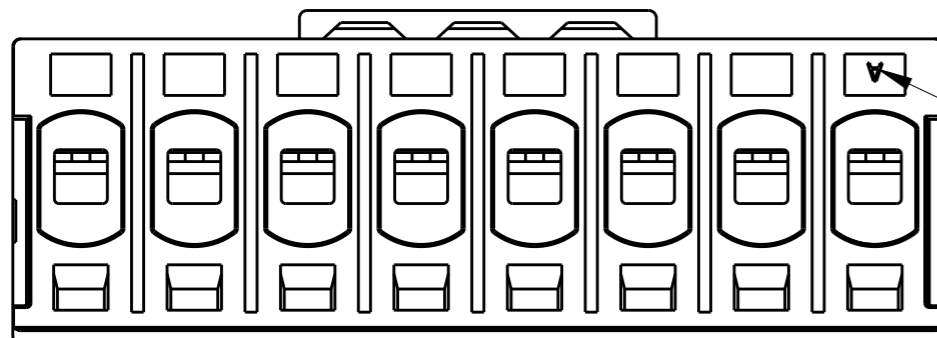
© COPYRIGHT -

ALL RIGHTS RESERVED.

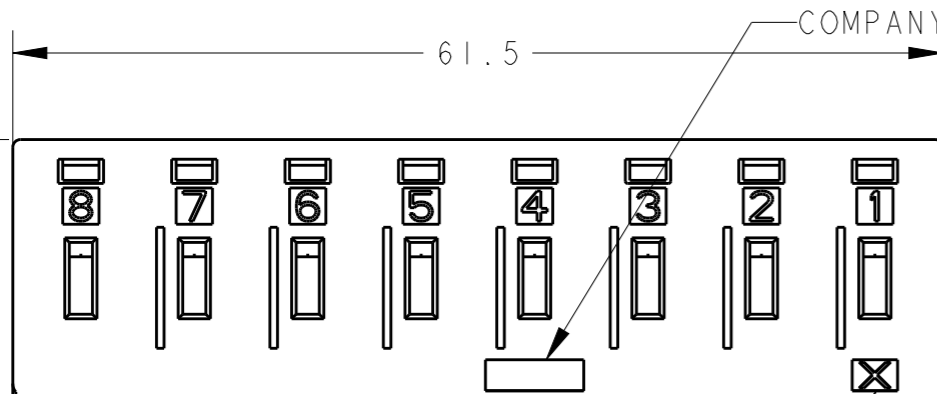
REVISIONS

変更

P	LTR	DESCRIPTION	DATE	DWN	APVD
	A	RELEASED	10SEP2019	Y.O	E.I

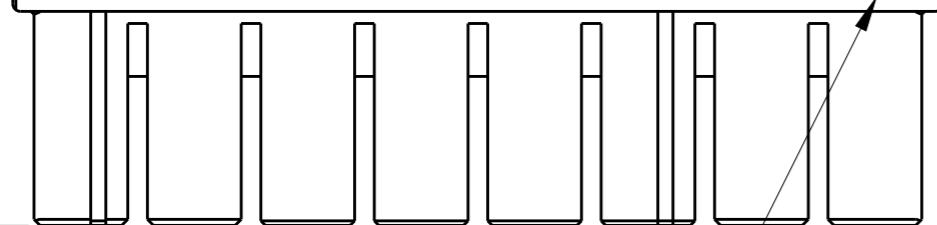


CAVITY MARK

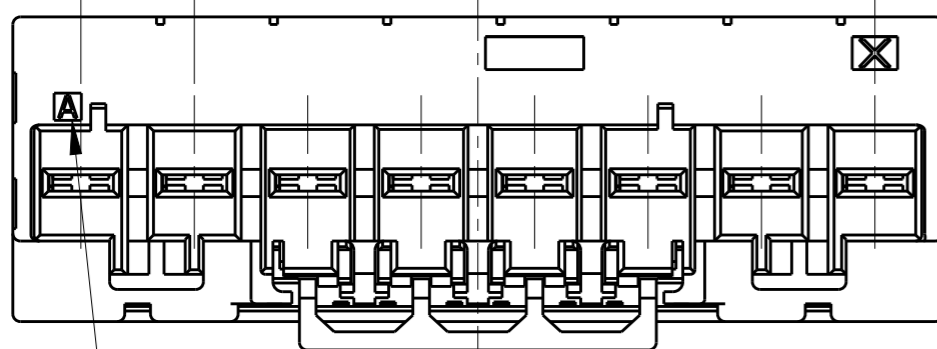


COMPANY LOGO

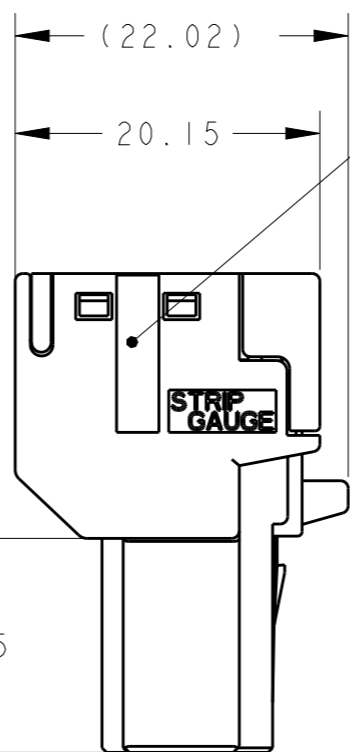
31.66



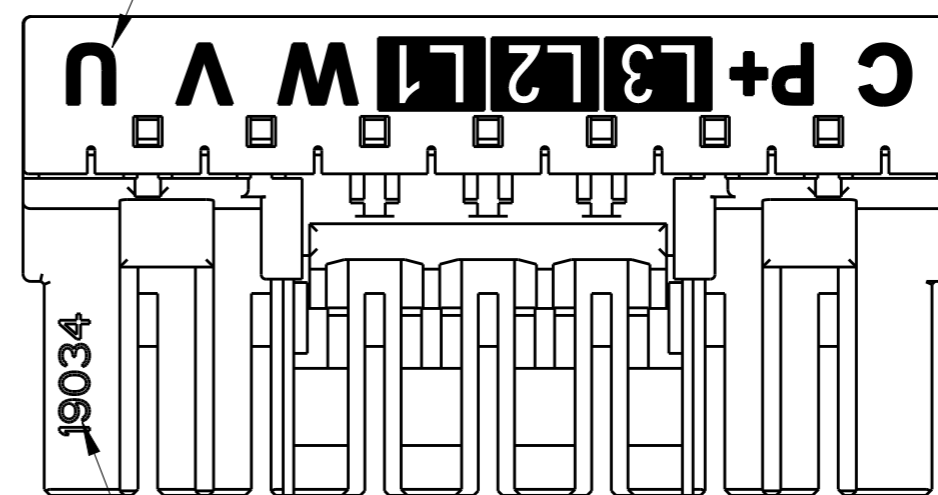
KEYING MARK



CAVITY MARK

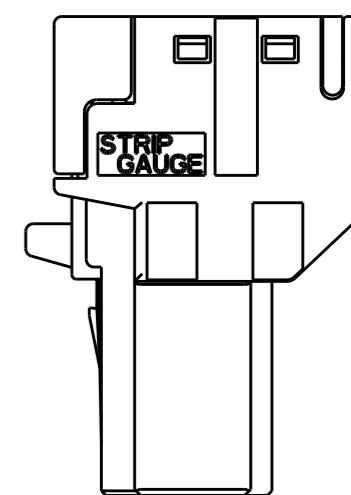


STRIP GAUGE

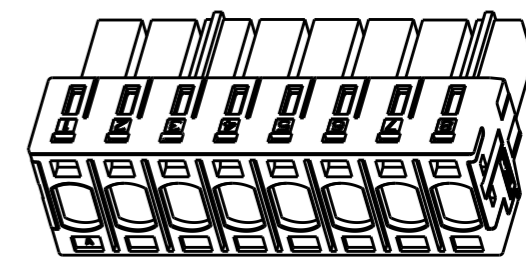


CIRCUIT MARK

DATE CODE (FIRST 5 DIGITS)




STRIP GAUGE



SCALE 1:1

- 1 MATERIAL
HOUSING: THERMOPLASTIC POLYESTER
CONTACT: COPPER ALLOY
SPRING: STAINLESS STEEL
- 2 PLATING
CONTACT POINT: UNDER Ni PLATING
OVER Au PLATING
CABLE CLAMPING POINT: UNDER Ni PLATING
OVER Tin PLATING
- 3. SEE INSTRUCTION SHEET 408-78173

X	8	1-2349825-8
KEYING	POSN.	PART NUMBER

THIS DRAWING IS A CONTROLLED DOCUMENT.		DWN Y. OKADA 09JAN2019	 TE Connectivity	
DIMENSIONS: 単位: 耗 mm		CHK T. SHIMOYASU 09JAN2019		
TOLERANCES UNLESS OTHERWISE SPECIFIED: 一般公差 ±0.5 0-PLC ±0.5 1-PLC ±0.1 2-PLC ±0.01 3-PLC ±0.005 4-PLC ± ANGLES ± ±		APVD F. IKEMATSU 09JAN2019	NAME 名称 RECEPTACLE ASSEMBLY, D4950, DYNAMIC	
MATERIAL 材料 SEE NOTE		FINISH 仕上 -	PRODUCT SPEC 製品規格 108-140216	RESTRICTED TO -
CUSTOMER DRAWING		WEIGHT -	APPLICATION SPEC 取付適用規格 -	SCALE 尺度 2:1
			SIZE A3	CAGE CODE -
			DRAWING NO 番号 C-2349825	SHEET 1 OF 1
				REV A