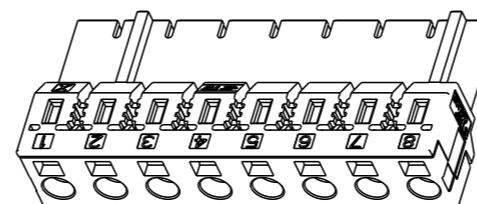
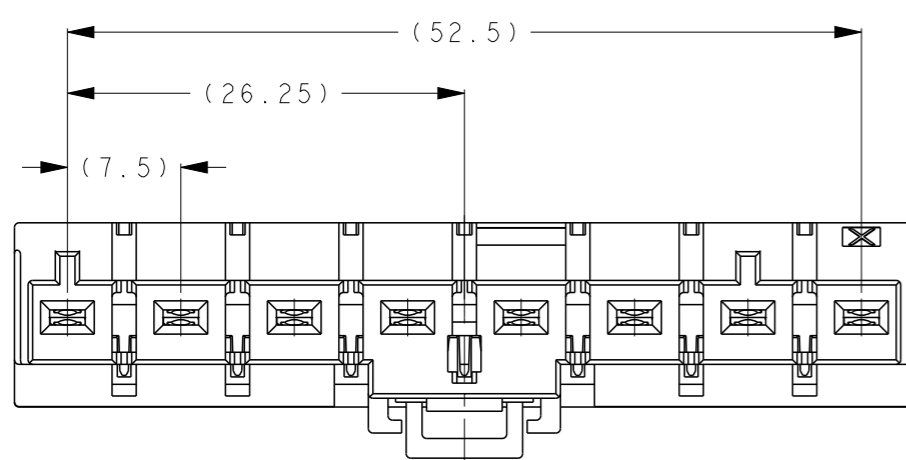
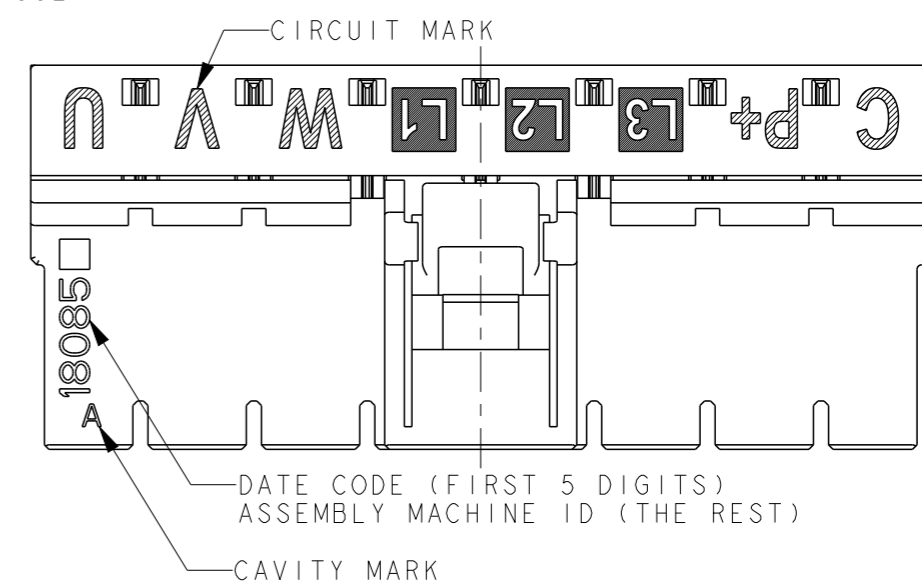
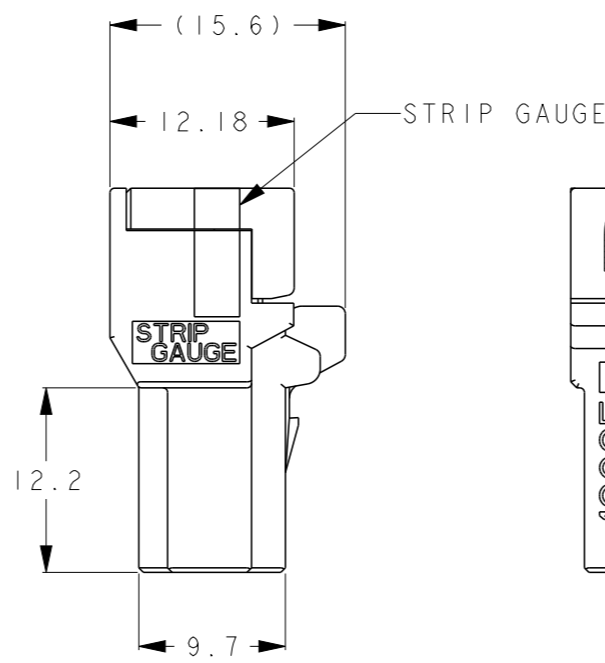
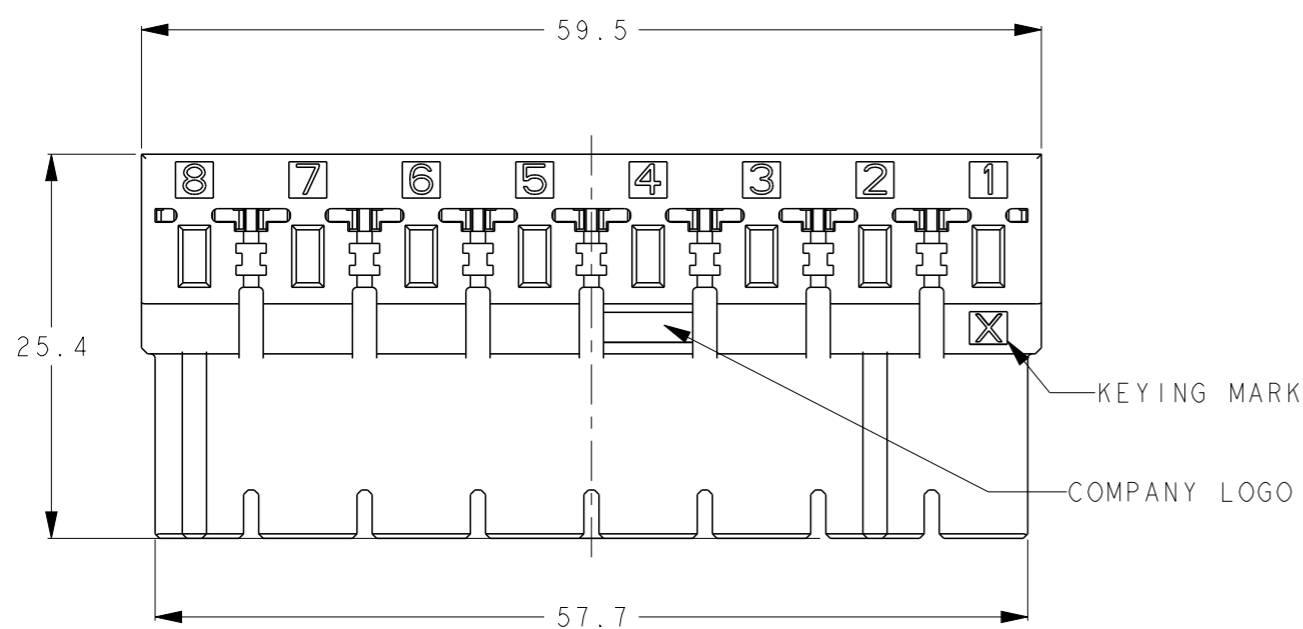
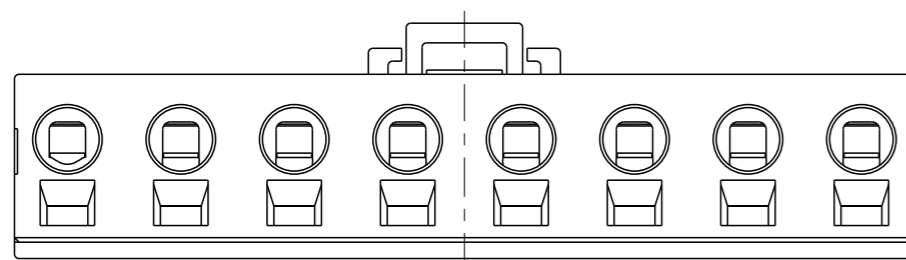


P	LTR	DESCRIPTION	DATE	DWN	APVD
	A	RELEASED	26 JUN 2019	R. I	E. I
	A I	REVISED	19 AUG 2019	R. I	E. I
	B	REVISED	27 JUL 2023	H. O	T. S



SCALE 1:1

- 1 MATERIAL
HOUSING: THERMOPLASTIC POLYESTER
CONTACT: COPPER ALLOY
SPRING: STAINLESS STEEL
- 2 PLATING
CONTACT POINT: UNDER Ni PLATING
OVER Au PLATING
CABLE CLAMPING POINT: UNDER Ni PLATING
OVER Tin PLATING



1-2349815-2

THIS DRAWING IS A CONTROLLED DOCUMENT.

DIMENSIONS: mm	TOLERANCES UNLESS OTHERWISE SPECIFIED: 0 PLC ±0.3 1 PLC ±0.3 2 PLC ±0.3 3 PLC ±0.3 4 PLC ±0.3 ANGLES ±3°
MATERIAL SEE NOTE	FINISH -

DWN	R. ITO	07 JAN 2019
CHK	T. SHIMOYASU	07 JAN 2019
APVD	E. IKEMATSU	07 JAN 2019
PRODUCT SPEC	108-78997	
APPLICATION SPEC	411-78272	
WEIGHT	-	
CUSTOMER DRAWING		

WITH	X	8	1-2349815-2
W/O	X	8	1-2349815-1
CIRCUIT MARK	KEYING	POSN.	PART NUMBER

TE TE Connectivity

NAME: RECEPTACLE ASSEMBLY, 8 POSN. DYNAMIC 3950

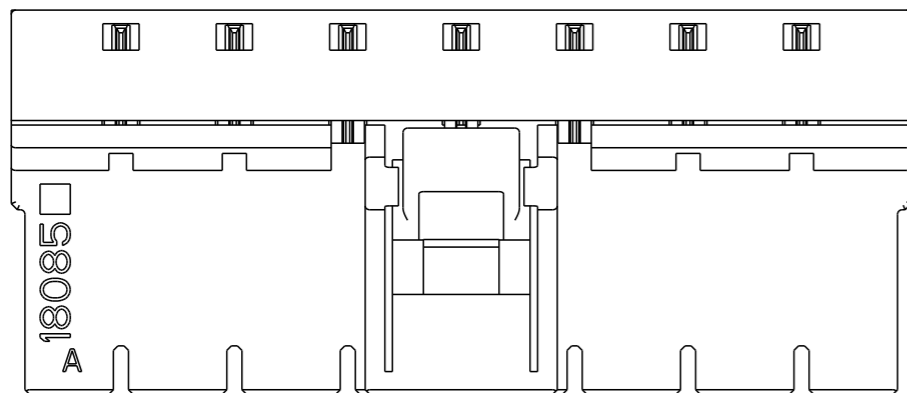
SIZE	CAGE CODE	DRAWING NO	RESTRICTED TO
A3	-	©-2349815	-

SCALE 2:1 SHEET 1 OF 2 REV B

© 2019 TE Connectivity. All Rights Reserved.

REVISIONS

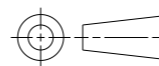
P	LTR	DESCRIPTION	DATE	DWN	APVD
	-	SEE SHEET 1	-	-	-



1-2349815-1

THIS DRAWING IS A CONTROLLED DOCUMENT.

DIMENSIONS:
mm



TOLERANCES UNLESS OTHERWISE SPECIFIED:

- 0 PLC ±0.3
- 1 PLC ±0.3
- 2 PLC ±0.3
- 3 PLC ±0.3
- 4 PLC ±0.3
- ANGLES ±3°

MATERIAL
SEE NOTE

FINISH
-

DWN R. ITO 07JAN2019

CHK T. SHIMOYASU 07JAN2019

APVD E. IKEMATSU 07JAN2019

PRODUCT SPEC 108-78997

APPLICATION SPEC 411-78272

WEIGHT -

CUSTOMER DRAWING



NAME
RECEPTACLE ASSEMBLY, 8POSN.
DYNAMIC 3950

SIZE	CAGE CODE	DRAWING NO	RESTRICTED TO
A3	-	C-2349815	-

SCALE	SHEET	OF	REV
2:1	2	2	B