

4

3

2

1

THIS DRAWING IS UNPUBLISHED.

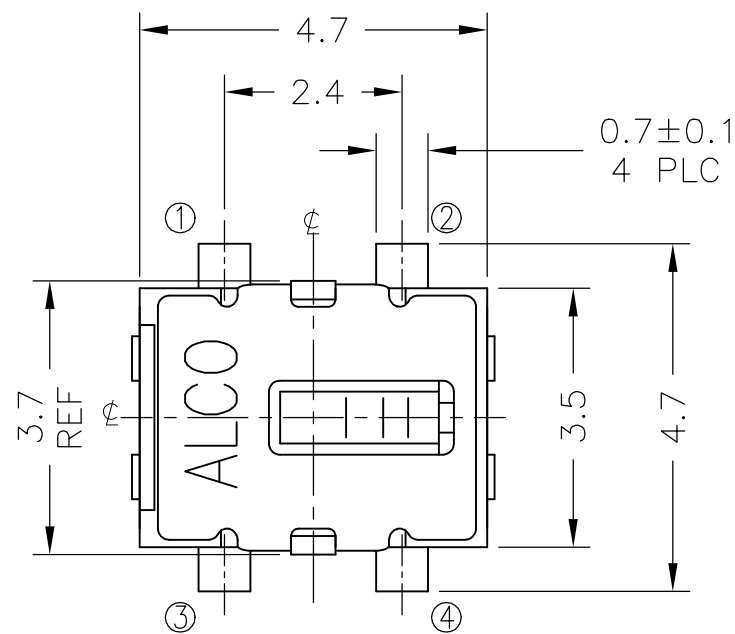
RELEASED FOR PUBLICATION

© COPYRIGHT - TE Connectivity Ltd.

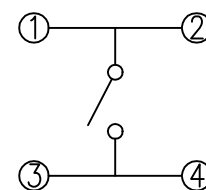
ALL RIGHTS RESERVED.

REVISIONS

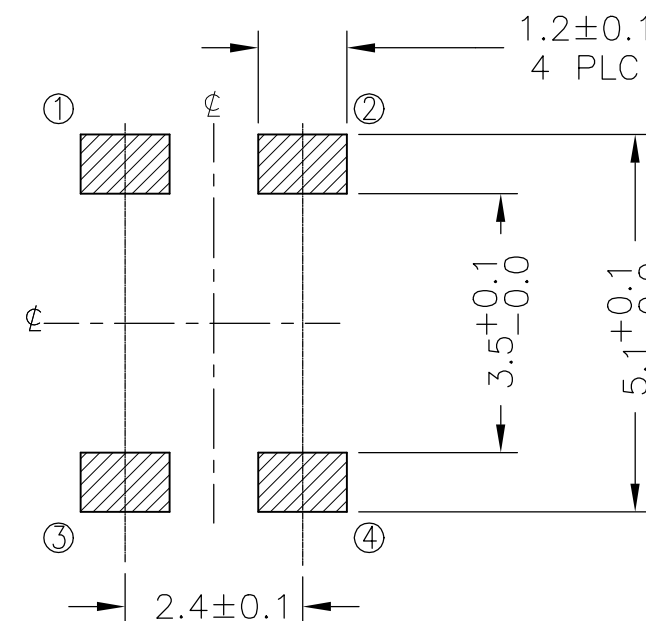
P	LTR	DESCRIPTION	DATE	DWN	APVD
A		ECR-18-012767	16AUG2018	RSM	AS



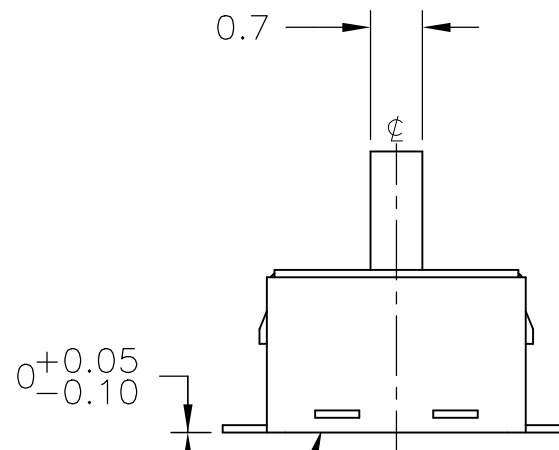
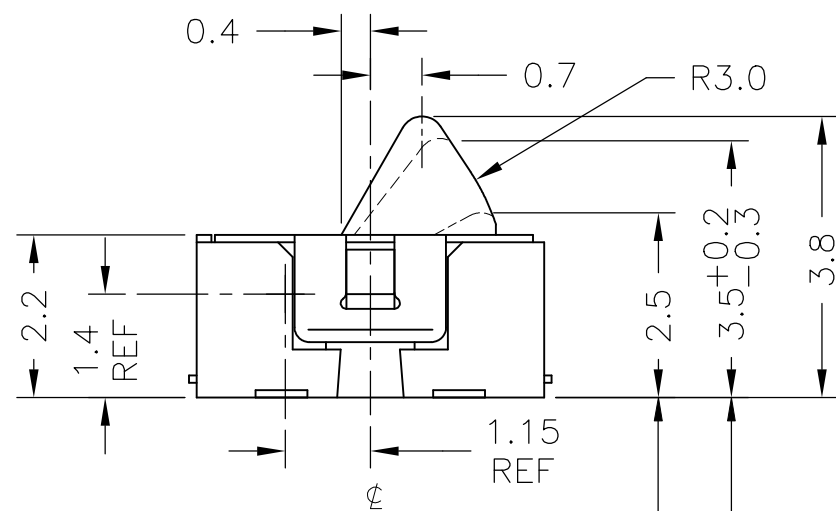
SCHEMATIC (1P1T)



P.C.B LAYOUT



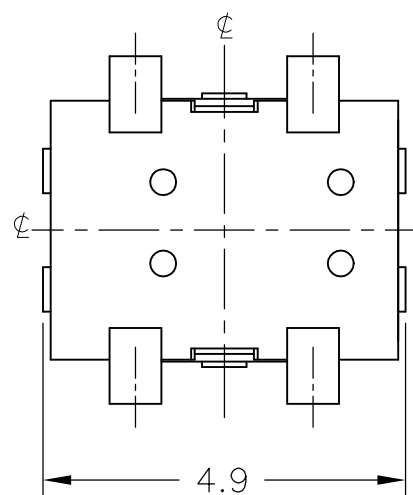
HATCHED AREA SHOWS SOLDERING LAND




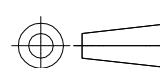
ON POSITION

P.C.B MOUNTING FACE

TOTAL TRAVEL POSITION



JJEVOUG380NONMRTR	2331417-1
SMART PART NUMBER	PART NUMBER

THIS DRAWING IS A CONTROLLED DOCUMENT.		DWN	02MAY2018		 TE Connectivity Ltd.
		CHK	02MAY2018		
		APVD	02MAY2018		
		PRODUCT SPEC	ALEXANDER SHARPE		
DIMENSIONS: mm		TOLERANCES UNLESS OTHERWISE SPECIFIED:		NAME	
		0 PLC	± -		DETECTOR SWITCH, JJE SERIES, 4.7X3.5mm, VERTICAL, SMT, WITHOUT POSTS
		1 PLC	± 0.2		
		2 PLC	± -		
		3 PLC	± -		
		4 PLC	± -		APPLICATION SPEC
		ANGLES	± -		—
MATERIAL		FINISH		WEIGHT	
-		-		-	
		CUSTOMER DRAWING		SCALE	1:1
		SIZE		A3	00779
		DRAWING NO		C-2331417	
		RESTRICTED TO		-	
		SHEET		1 of 4	
		REV		A	

4

3

2

1

THIS DRAWING IS UNPUBLISHED.

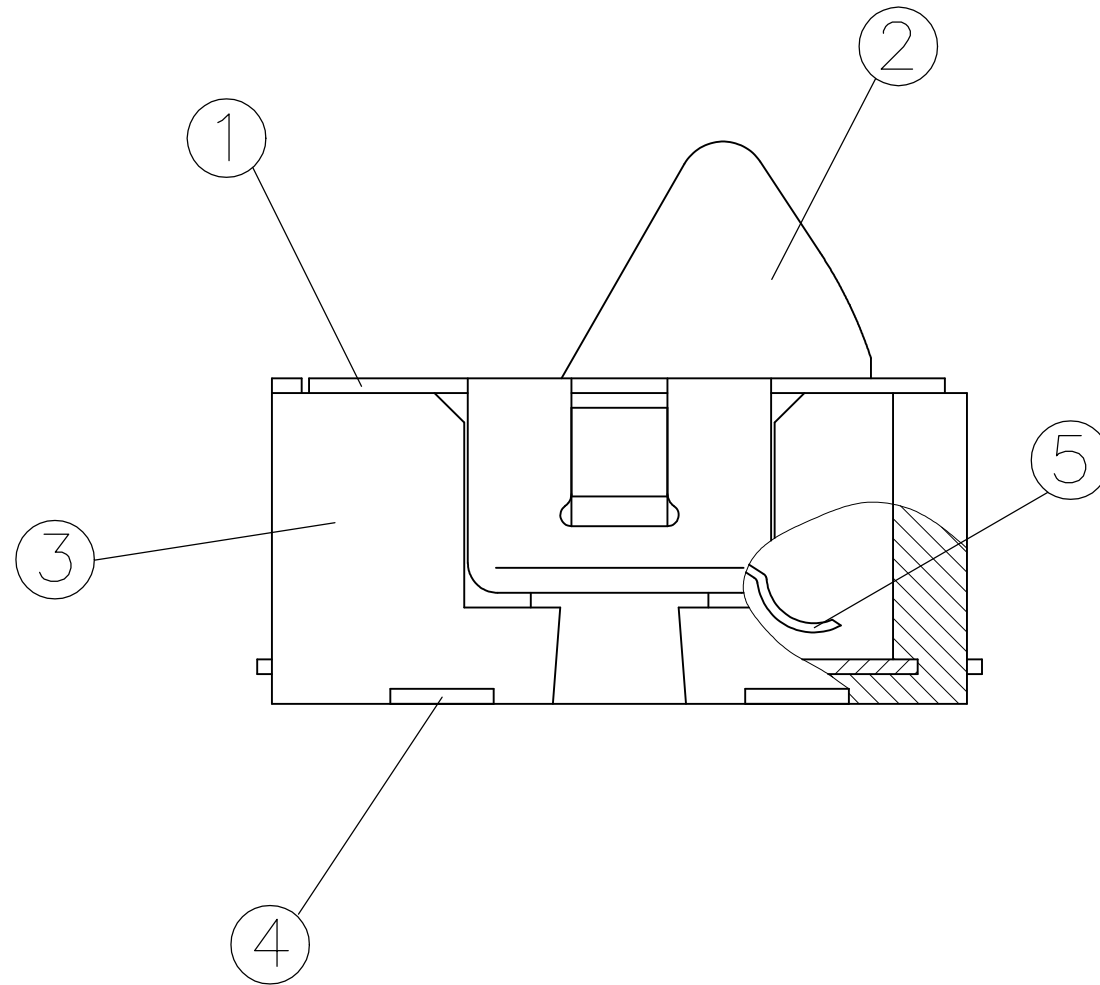
RELEASED FOR PUBLICATION

REVISIONS


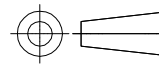
© COPYRIGHT - TE Connectivity Ltd.

ALL RIGHTS RESERVED.

P	LTR	DESCRIPTION	DATE	DWN	APVD
-	-	SEE SHEET 1	-	-	-



SILVER PLATE	STAINLESS STEEL PLATE	CONTACT PLATE	5
SILVER PLATE OVER NICKEL PLATE	COPPER ALLOY	TERMINAL	4
BLACK	THERMOPLASTIC	FRAME	3
GRAY	THERMOPLASTIC	ACTUATOR	2
-	STAINLESS STEEL	COVER	1
COLOR OR FINISH	MATERIAL	PART NAME	NO.

THIS DRAWING IS A CONTROLLED DOCUMENT.		DWN RAVI.S 02MAY2018	 TE Connectivity Ltd.	
DIMENSIONS: mm		CHK ALEXANDER SHARPE 02MAY2018		
		APVD ALEXANDER SHARPE 02MAY2018	NAME DETECTOR SWITCH, JJE SERIES, 4.7X3.5mm, VERTICAL, SMT, WITHOUT POSTS	
TOLERANCES UNLESS OTHERWISE SPECIFIED: 0 PLC ± - 1 PLC ± 0.2 2 PLC ± - 3 PLC ± - 4 PLC ± - ANGLES ± -		PRODUCT SPEC -	RESTRICTED TO -	
MATERIAL -		FINISH -	APPLICATION SPEC -	SIZE A3
		WEIGHT	CAGE CODE 00779	DRAWING NO C-2331417
		CUSTOMER DRAWING	SCALE 20:1	SHEET 2 of 4
			REV A	

THIS DRAWING IS UNPUBLISHED.

RELEASED FOR PUBLICATION

REVISIONS

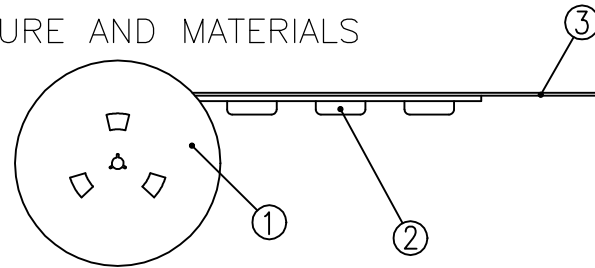
© COPYRIGHT - TE Connectivity Ltd.

ALL RIGHTS RESERVED.

P	LTR	DESCRIPTION	DATE	DWN	APVD
-	-	SEE SHEET 1	-	-	-

PACKAGING:

1. STRUCTURE AND MATERIALS

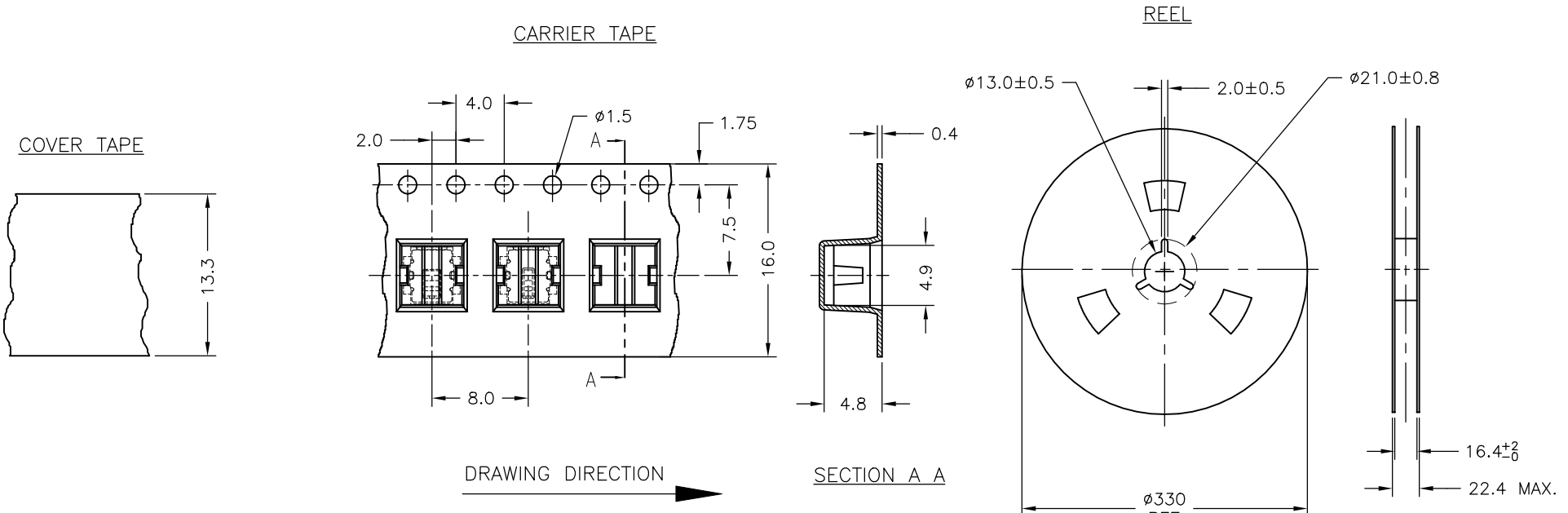


2. PACKAGING QUANTITY : 1,500 SWITCHES/REEL

3. MORE THAN 10 EMPTY POCKETS AT BOTH ENDS OF THE CARRIER TAPE FOR EACH REEL.

4. TAPE AND REEL PER EIA-481

5. DIMENSIONS :



POLYESTER	COVER TAPE	③
POLYSTYRENE	CARRIER TAPE	②
POLYSTYRENE	REEL	①
MATERIALS	PARTS NAME	NO.

THIS DRAWING IS A CONTROLLED DOCUMENT.		DWN	02MAY2018		 TE Connectivity Ltd.
		CHK	02MAY2018		
		APVD	02MAY2018		
		NAME	ALEXANDER SHARPE		
DIMENSIONS: mm 		TOLERANCES UNLESS OTHERWISE SPECIFIED: 0 PLC ± - 1 PLC ± 0.2 2 PLC ± - 3 PLC ± - 4 PLC ± - ANGLES ± -		PRODUCT SPEC APPLICATION SPEC WEIGHT	
MATERIAL		FINISH		SIZE CAGE CODE DRAWING NO RESTRICTED TO	
-		-		A3 00779 C-2331417 CUSTOMER DRAWING SCALE 2:1 SHEET 3 of 4 REV A	

THIS DRAWING IS UNPUBLISHED.

RELEASED FOR PUBLICATION

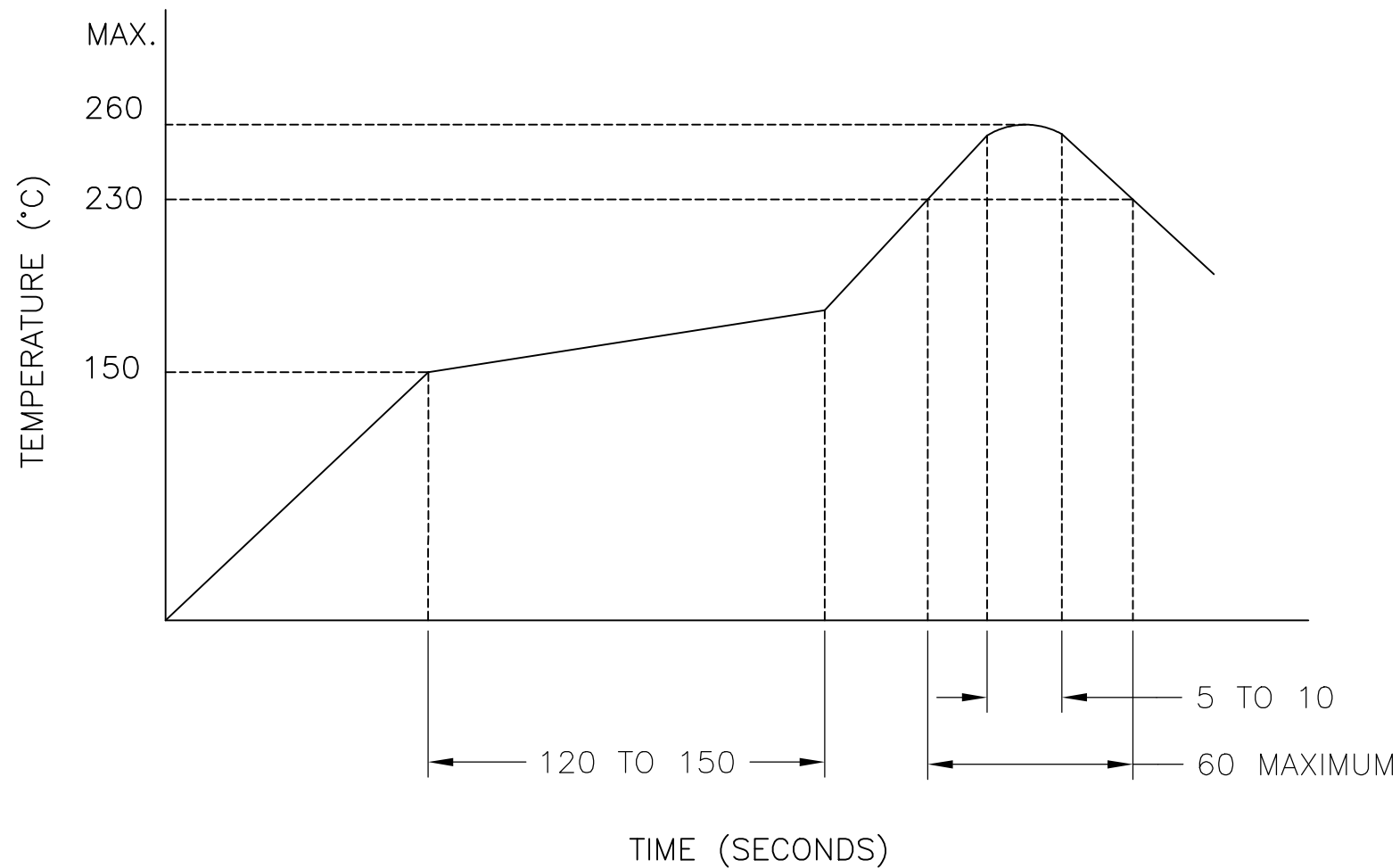
REVISIONS

© COPYRIGHT - TE Connectivity Ltd.

ALL RIGHTS RESERVED.

P	LTR	DESCRIPTION	DATE	DWN	APVD
-	-	SEE SHEET 1	-	-	-

REFLOW SOLDERING



1. RATING: DC 5V, 1mA (RESISTIVE LOAD)
2. CONTACT RESISTANCE: 1Ω MAXIMUM (INITIAL)
3. INSULATION RESISTANCE: 50 MΩ MINIMUM
4. WITHSTANDING VOLTAGE: AC 250V, 50 TO 60 Hz, 1 MINUTE
5. OPERATING FORCE: 60gf MAXIMUM
6. LIFE CYCLE: 100,000 CYCLES WITHOUT LOAD
7. OPERATING TEMPERATURE: -40 TO 85°C
8. STORAGE TEMPERATURE: -40 TO 85°C
9. COMPLIANCE: ALL MATERIALS AND FINISHES SHALL COMPLY WITH EU DIRECTIVE 2002/95/EC OF 27 JAN 2003 (RoHS).

THE TIME-TEMPERATURE CHART IS BASED ON THE TEMPERATURE OF THE MOUNTING SURFACE OF THE P.C.B. FOR THE SWITCH.

THIS DRAWING IS A CONTROLLED DOCUMENT.		DWN RAVI.S 02MAY2018	TE Connectivity Ltd.	
DIMENSIONS: mm		CHK ALEXANDER SHARPE 02MAY2018		
TOLERANCES UNLESS OTHERWISE SPECIFIED:		APVD ALEXANDER SHARPE 02MAY2018	NAME DETECTOR SWITCH, JJE SERIES, 4.7X3.5mm, VERTICAL, SMT, WITHOUT POSTS	
0 PLC ± - 1 PLC ± 0.2 2 PLC ± - 3 PLC ± - 4 PLC ± - ANGLES ± -		PRODUCT SPEC -	SIZE A3	
MATERIAL -		FINISH -	CAGE CODE 00779	DRAWING NO C-2331417
		WEIGHT	RESTRICTED TO -	
		CUSTOMER DRAWING	SCALE 2:1	SHEET 4 OF 4
			REV A	