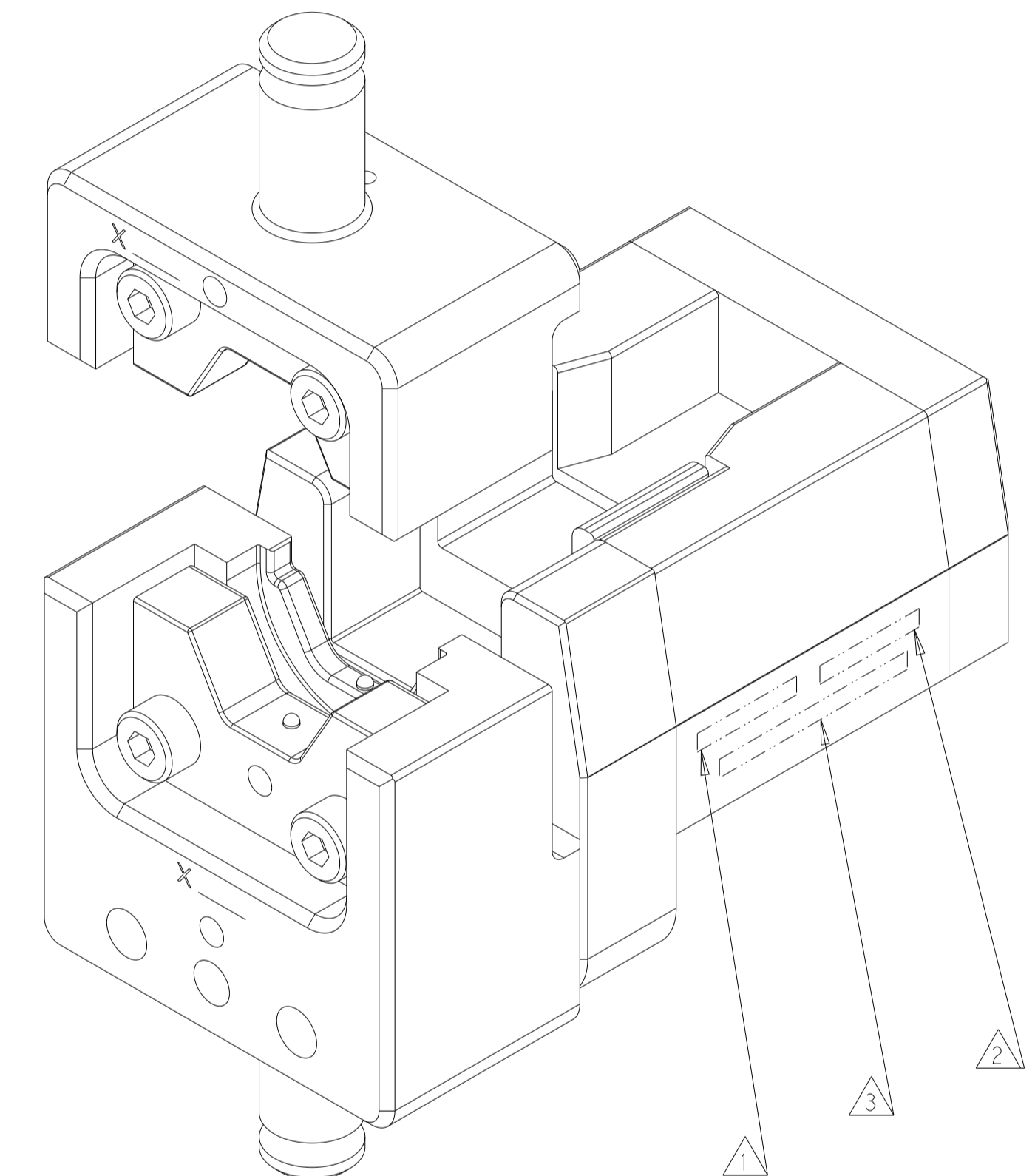
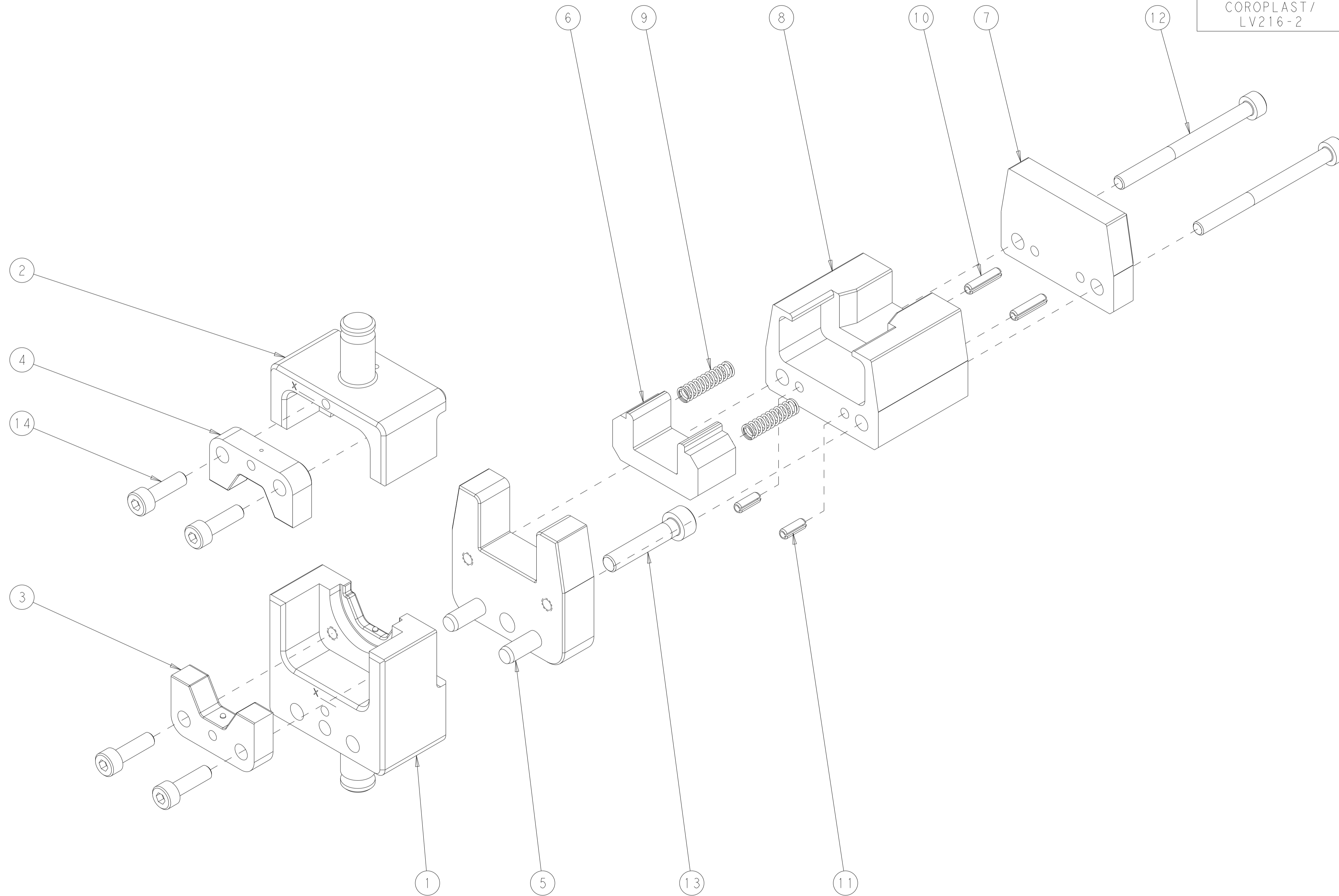


PART NUMBER	REV	DESCRIPTION
2326578	C	DIE SET
7-2326578-7	C	CRIMP TOOLING KIT
9-2326578-1	C	DIE SET WITH DIE HOLDER

REVISIONS					
P	LTM	DESCRIPTION	DATE	DWN	APVD
B		ECR-18-017478	14NOV2018	CAK	CAM
B1		ECR-20-013364	21SEP2020	JL	YY
C		ECR-22-160942	12DEC2022	RL	YY
C1		ECR-24-198277	23JAN2024	GC	KH

TERMINAL NAME	HVP 800-90-2/3P FERRULE 50MM2				
TE TERMINAL PART NUMBER(S)	9-2141157-1	9-2141158-2			
APPLICATION SPECIFICATION	114-94052 REV.G				
REFERENCE DRAWING	1-528041-2				
USED ON	2305470-1	2326378-1			
INSTRUCTION SHEET	408-35056				

CABLE SUPPLIER/SPECIFICATION	CABLE SIZE	CRIMP HEIGHT INSULATION	CRIMP HEIGHT SHIELD	CRIMP WIDTH SHIELD	CRIMP HEIGHT REFERENCE SETTING
COROPLAST/LV216-2	50mm ²	15.5±0.2	16.6±0.2	21 MAX	C7



1	-	-	-	2305470-1	HV DIE HOLDER WITH FINE ADJUST	100
4	4	4	-	9-18023-6	SCR, SKT HD CAP M4 X 14.0	14
1	-	1	-	2-18023-2	SCR, SKT HD CAP M5 X 25.0	13
2	-	2	-	8-18023-0	SCR, SKT HD CAP M4 X 50.0	12
2	-	2	-	6-993111-4	PIN, SLOTTED SPRING 3.0 X 8.0	11
2	-	2	-	993111-8	PIN, SLOTTED SPRING 3.0 X 12.0	10
2	-	2	-	3-22279-4	SPRING, COMPRESSION	9
1	-	1	-	2326598-1	BLOCK, TERMINAL	8
1	-	1	-	2326647-1	STOP, TERMINAL	7
1	-	1	-	2326599-1	PLATE, SHIELD	6
1	-	1	-	2326597-1	HOUSING, LOCATOR	5
1	1	1	-	2326594-3	INSERT, UPPER HV800-90 FERRULE	4
1	1	1	-	2326593-3	INSERT, LOWER HV800-90 FERRULE	3
1	1	1	-	2326592-1	CRIMPER HVM HEX	2
1	1	1	-	2326591-1	NEST HVM HEX	1
-91	-77	-1	U/M	PART NO	DESCRIPTION	ITEM NO

- ⚠️ APPLY "DIE SET PN" PER TEC-115-67-2 IN APPROXIMATE AREA SHOWN.
- ⚠️ IDENTIFY PART NUMBER AND REVISION LETTER PER TEC-115-67-2 IN APPROXIMATE AREA SHOWN.
- ⚠️ IDENTIFY SERIAL NUMBER PER TEC-115-67-2 IN APPROXIMATE AREA SHOWN.
- 4. TORQUE RECOMMENDATIONS PER 101-35000 UNLESS OTHERWISE SPECIFIED.

THIS DRAWING IS A CONTROLLED DOCUMENT.

APPROVED: **C. KERSTELTER** 11SEP2018
 CHECKED: **A. WHITCOMB** 11SEP2018
 DRAWN BY: **B. KEENEY** 11SEP2018

TE Connectivity

NAME: DIE ASM, HV800-90 FERRULE 50mm2

SIZE: A | 00779 | C=2326578

CUSTOMER ACCESSIBLE PRODUCTION DRAWING | SCALE: 3:2 | SHEET 1 OF 1 | REV: C1