

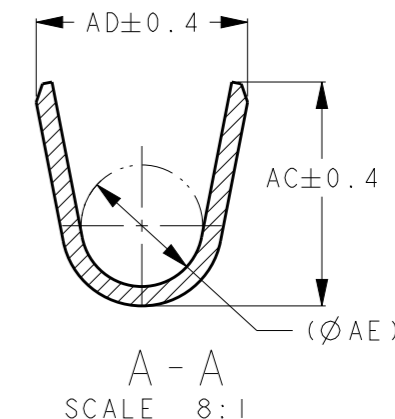
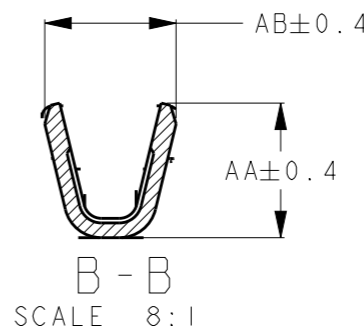
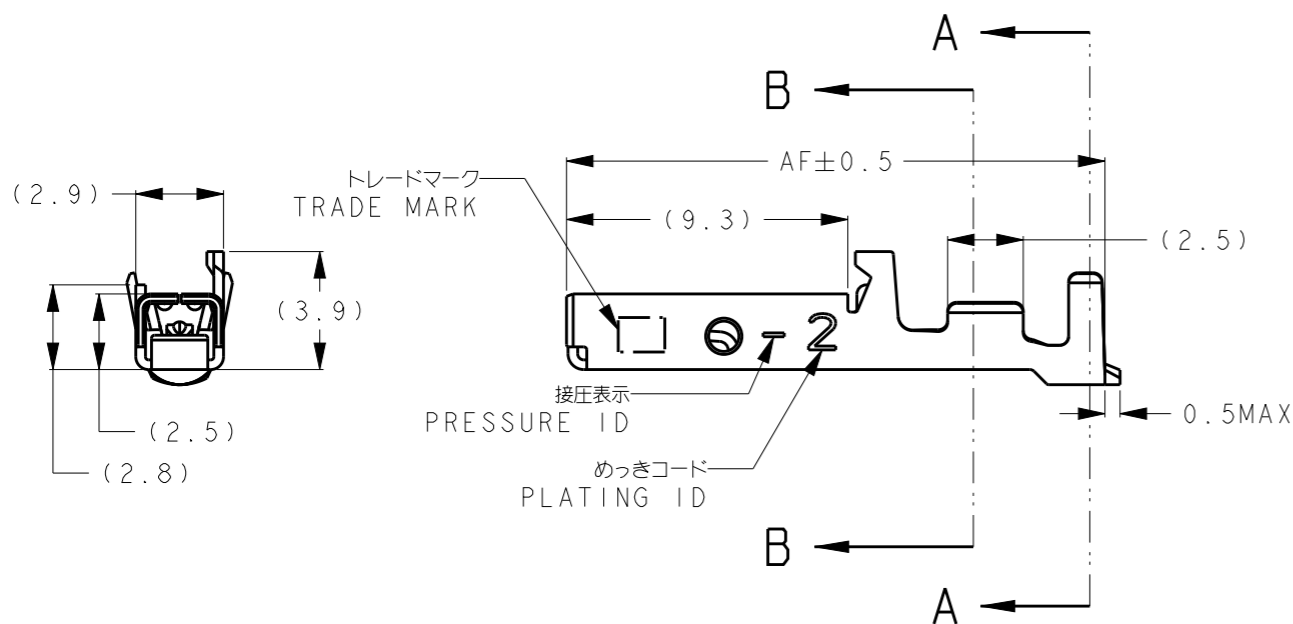
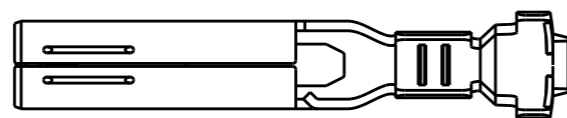
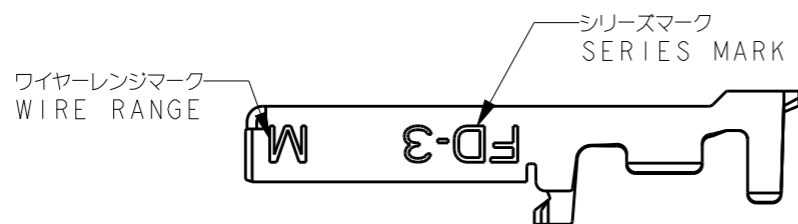
THIS DRAWING IS UNPUBLISHED.

RELEASED FOR PUBLICATION 20

© COPYRIGHT 20 BY - ALL RIGHTS RESERVED.

REVISIONS  
変更

P	LTR	DESCRIPTION	DATE	DWN	APVD
	A	RELEASED	05DEC2017	RI	EI
	A1	REVISED PER ECR-18-006941	07MAY2018	RI	EI
	A2	REVISED PER ECR-18-008360	05JUN2018	TS	EI



18.3	3.4	4.8	3.9	3.2	3.3	3.1-3.8	3L	AWG16-14 1.23-2.2mmSQ	-	2	GOLD 0.38μm MIN.	2311162-5
18.3	2.6	4.2	4.0	3.2	3.3	2.2-2.8	2L	AWG16-14 1.23-2.2mmSQ	-	2	GOLD 0.38μm MIN.	2311162-4
17.8	2.3	4.2	4.0	2.9	2.9	1.8-2.81	L	AWG20-16 0.5-1.25mmSQ	-	2	GOLD 0.38μm MIN.	2311162-3
17.8	2.3	3.6	3.7	2.3	2.1	1.2-2.6	M	AWG24-20 0.2-0.5mmSQ	-	2	GOLD 0.38μm MIN.	2311162-2
17.8	1.3	2.5	2.5	1.8	1.8	0.8-1.4	S	AWG28-24 0.08-0.2mmSQ	-	2	GOLD 0.38μm MIN.	2311162-1
寸法AF DIM AF	寸法AE DIM AE	寸法AD DIM AD	寸法AC DIM AC	寸法AB DIM AB	寸法AA DIM AA	適用被覆径 INSUL. RANGE	ワイヤレンジマーク SIZE ID	適用電線範囲 WIRE RANGE	接圧表示 PRESSURE ID	めっきコード PLATING ID	接点部めっき CONTACT POINT PLATING	型番 PART NUMBER

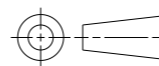
I. 材料: 銅合金  
めっき: 全面ニッケル下地および接点部に表記載の金または錫めっき

I. MATERIAL: COPPER ALLOY  
PLATING: GOLD OR TIN PLATING DESCRIBED IN THE TABLE  
OVER NICKEL PLATING

THIS DRAWING IS A CONTROLLED DOCUMENT.

DIMENSIONS:  
単位: 概  
mm

TOLERANCES UNLESS  
OTHERWISE SPECIFIED:



一般公差	±0.3
0 PLC	±0.3
1 PLC	±0.3
2 PLC	±0.3
3 PLC	±0.3
4 PLC	±0.3
ANGLES	±3°

MATERIAL  
材料  
SEE NOTE

FINISH  
仕上  
SEE TABLE

DWN 30NOV2017  
R. ITO

CHK 30NOV2017  
T. SHIMOYASU

APVD 30NOV2017  
F. IKEMATSU

PRODUCT SPEC  
製品規格  
108-5349

APPLICATION SPEC  
取付適用規格  
114-78030

WEIGHT -

CUSTOMER DRAWING

NAME  
名称  
**STE** TE Connectivity  
LOOSE PIECE, RECEPTACLE CONTACT,  
FMLB, DYNAMIC D3000 SERIES

SIZE A3 CAGE CODE 00779 DRAWING NO. C-2311162 RESTRICTED TO -

SCALE 4:1 SHEET 1 OF 1 REV A2