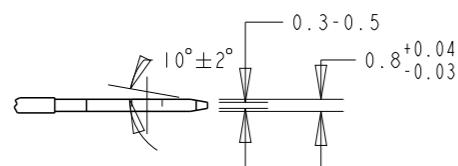


P	LTR	DESCRIPTION	DATE	DWN	APVD
	A12	ECR-24-204693	06MAY2024	DK	RE

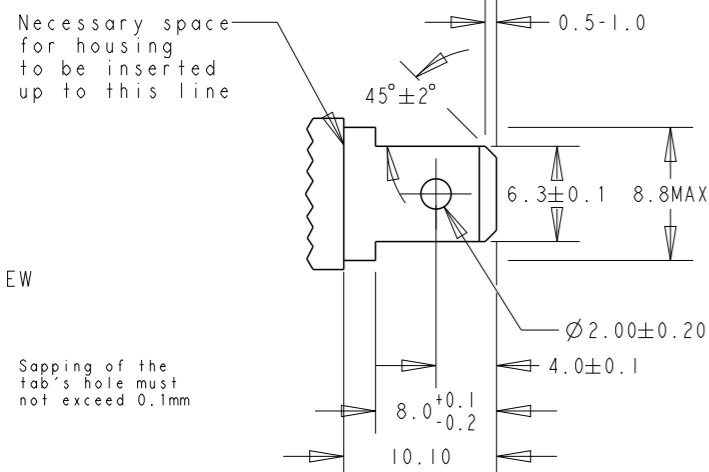
### SUGGESTED MATING TAB

SIDE VIEW



Necessary space for housing to be inserted up to this line

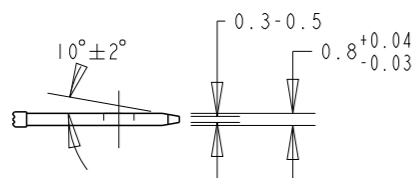
TOP VIEW



Sapping of the tab's hole must not exceed 0.1mm

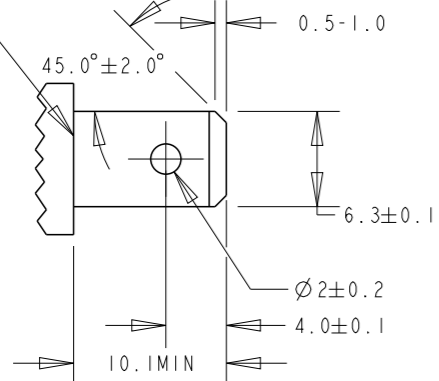
TYPE A (When using tab shoulder for butting)

SIDE VIEW



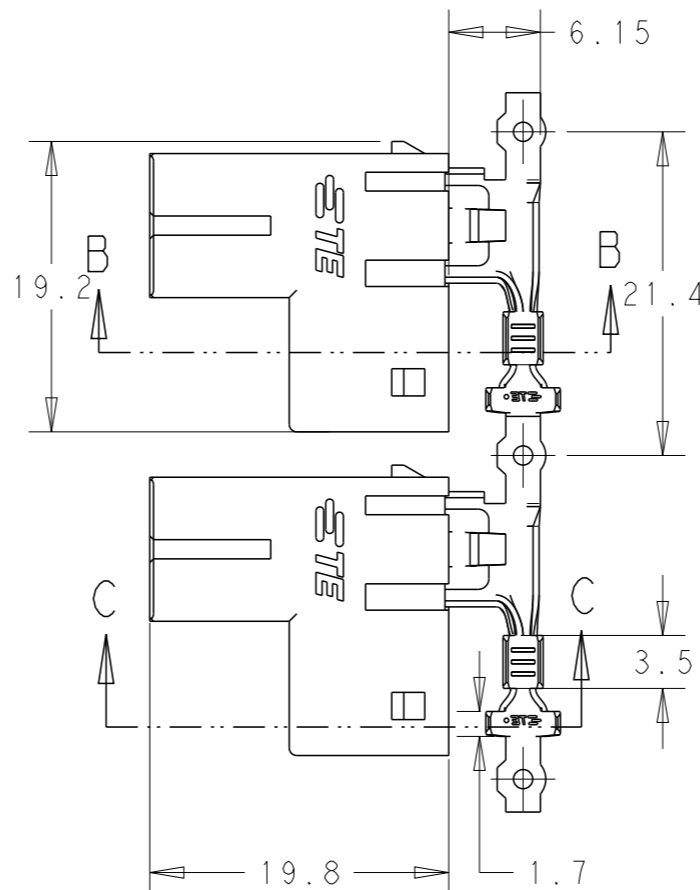
Butting surface of housing

TOP VIEW



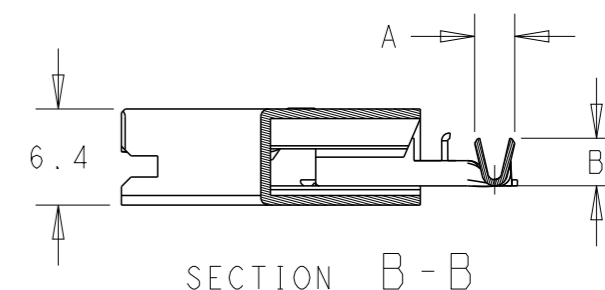
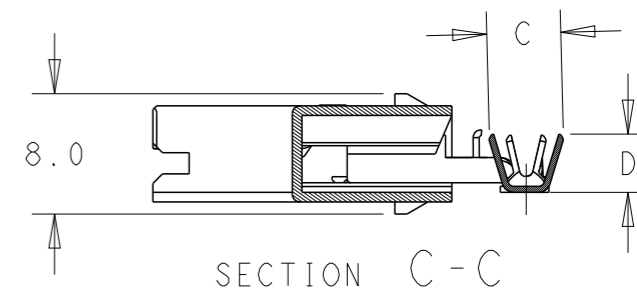
Sapping of the tab's hole must not exceed 0.1mm

TYPE B (When using resin, etc. for butting)




NOTE:

- CONTACT MATERIAL, TIN PLATED BRASS.
- HOUSING MATERIAL, NYLON 6/66, GLASS-FIBRE. UL94V-0.
- GWT 750°C VERSION, ACCORDING TO IEC 60335-1.
- NEW PN WITH DIFFERENT PACKAGING QTY AND SMALLER REELING SIZE(24in).



4	6.9REF. (HIGH SIDE)	6.6	4.5REF.	4.2	2.2-3.0	22-18	3-2299280-3
	3.6REF. (SHORT SIDE)				3.40-4.32	14-12	3-2299280-2
4	3.9REF.	4.9	3.1REF.	2.7	2.2-3.0	22-18	3-2299280-1
	6.9REF. (HIGH SIDE)	6.6	4.5REF.	4.2	3.40-4.32	14-12	2299280-3
	3.6REF. (SHORT SIDE)				3.0-4.0	16-14	2299280-2
OBSOLETE	3.9REF.	4.9	3.1REF.	2.7	2.2-3.0	22-18	<del>2299280-1</del>
	DIM D	DIM C	DIM B	DIM A	INSULATION	WIRE SIZE (AWG)	P/N

THIS DRAWING IS A CONTROLLED DOCUMENT.		DWN LEI PAN 08FEB2017	 TE Connectivity	NAME POD-LOK 250 FLAG ASSY.		
DIMENSIONS: mm		CHK TIM DING 08FEB2017		PRODUCT SPEC 108-106262		SIZE A3
TOLERANCES UNLESS OTHERWISE SPECIFIED:		APVD TIM DING 08FEB2017		APPLICATION SPEC 114-106262		
0 PLC ±- 1 PLC ±0.3 2 PLC ±0.25 3 PLC ±- 4 PLC ±- ANGLES ±-		WEIGHT -		DRAWING NO C-2299280		RESTRICTED TO -
MATERIAL -		FINISH -	CUSTOMER DRAWING		SCALE 2:1	
				SHEET 1 OF 1		
				REV A12		