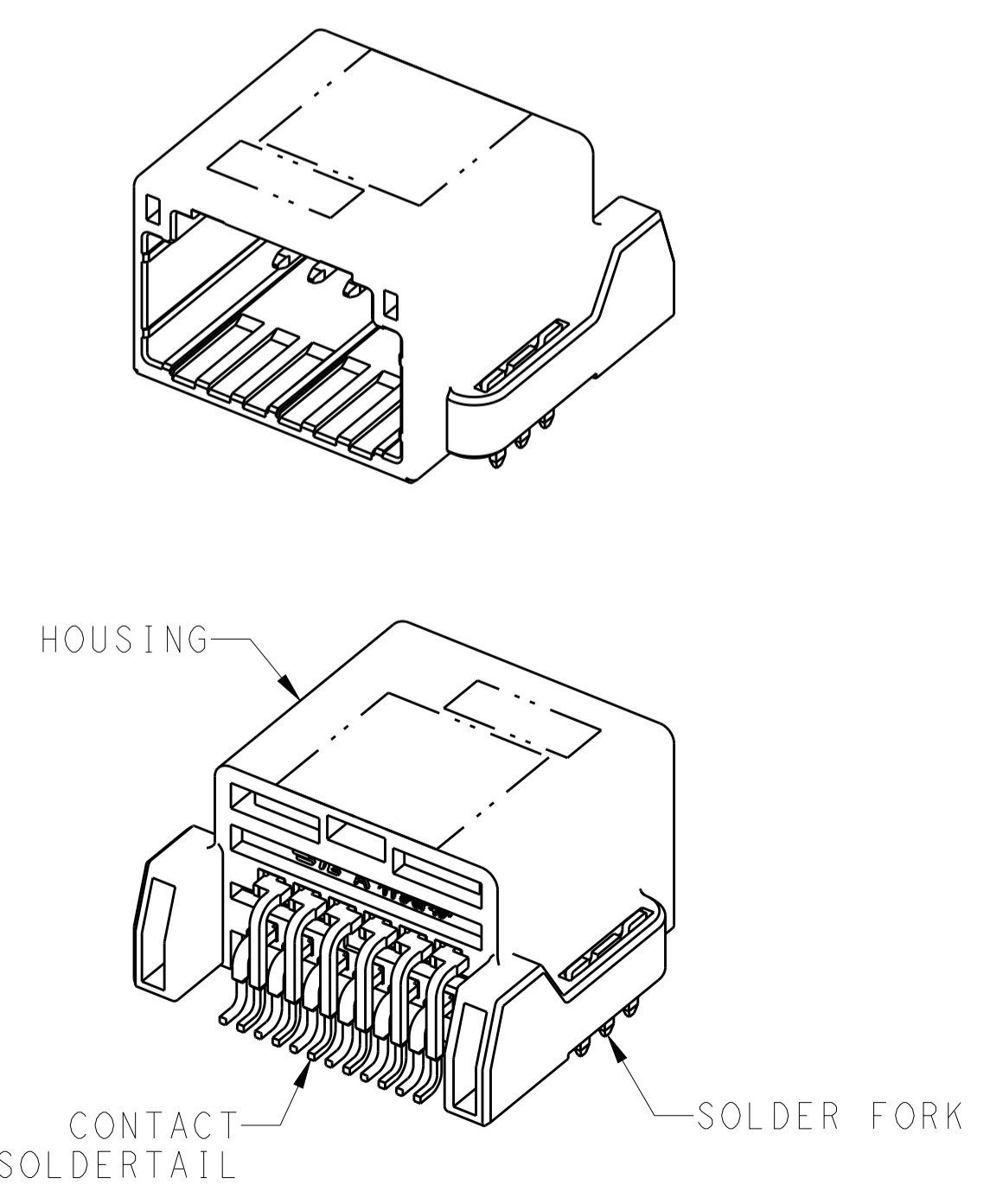
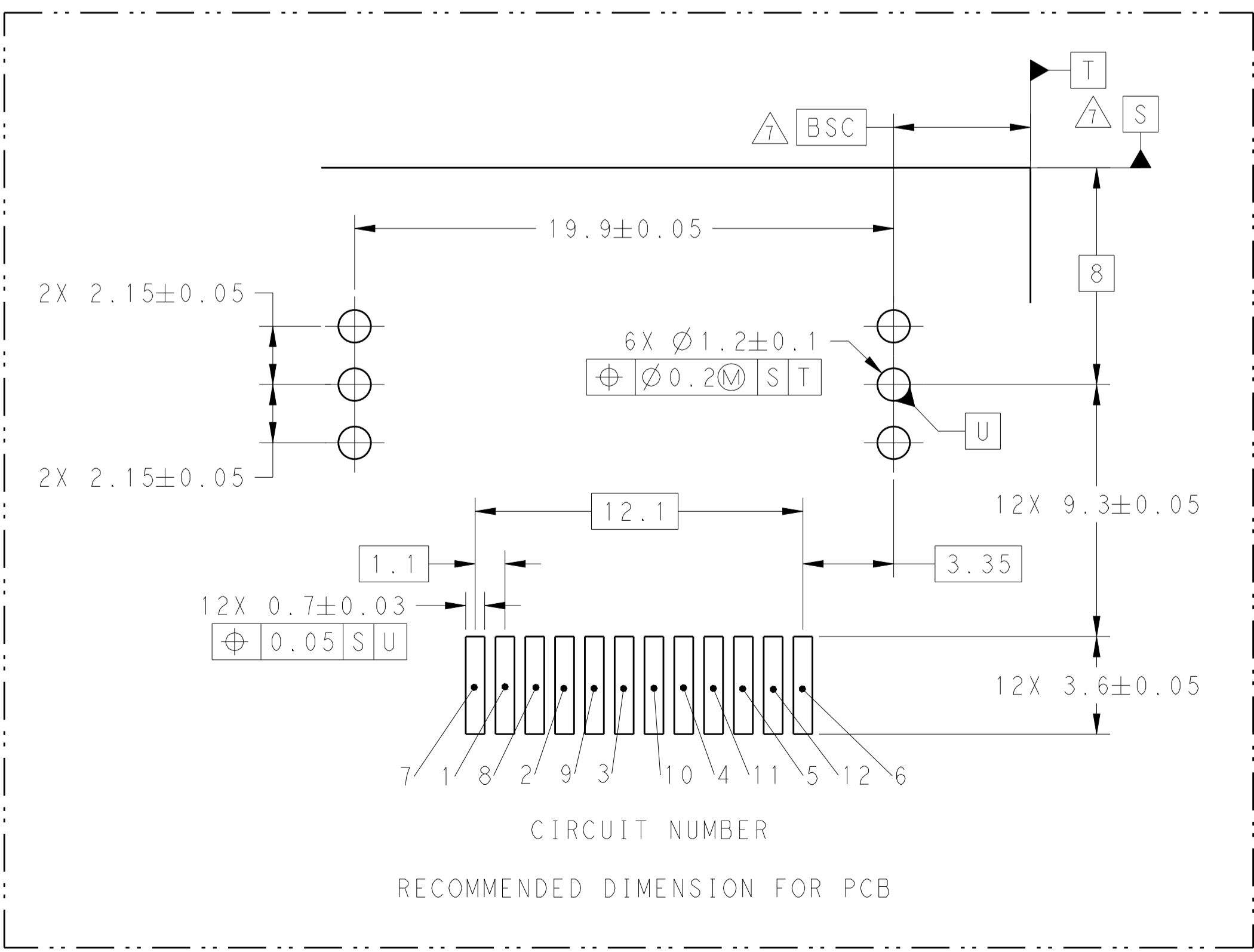
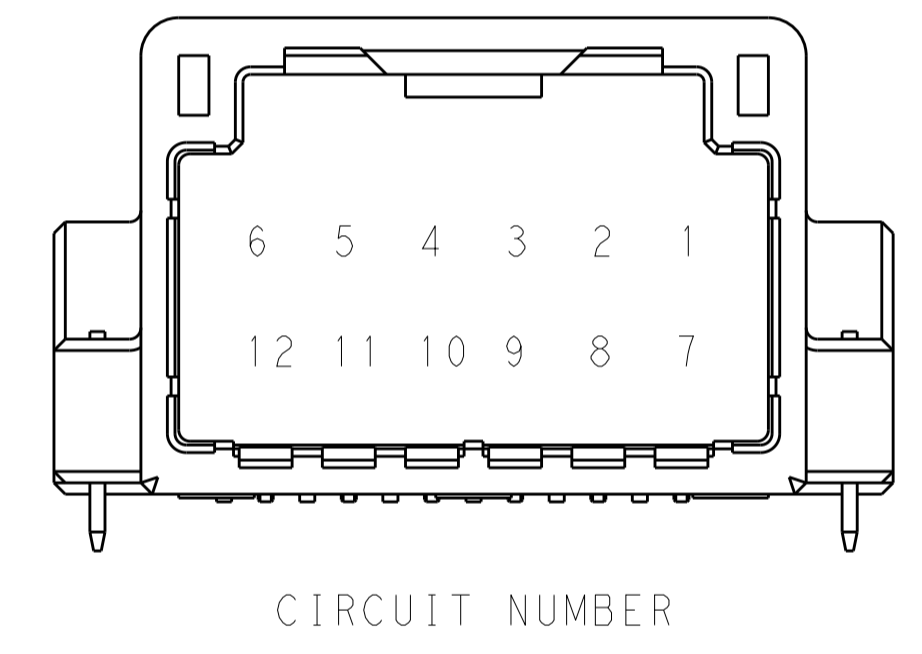
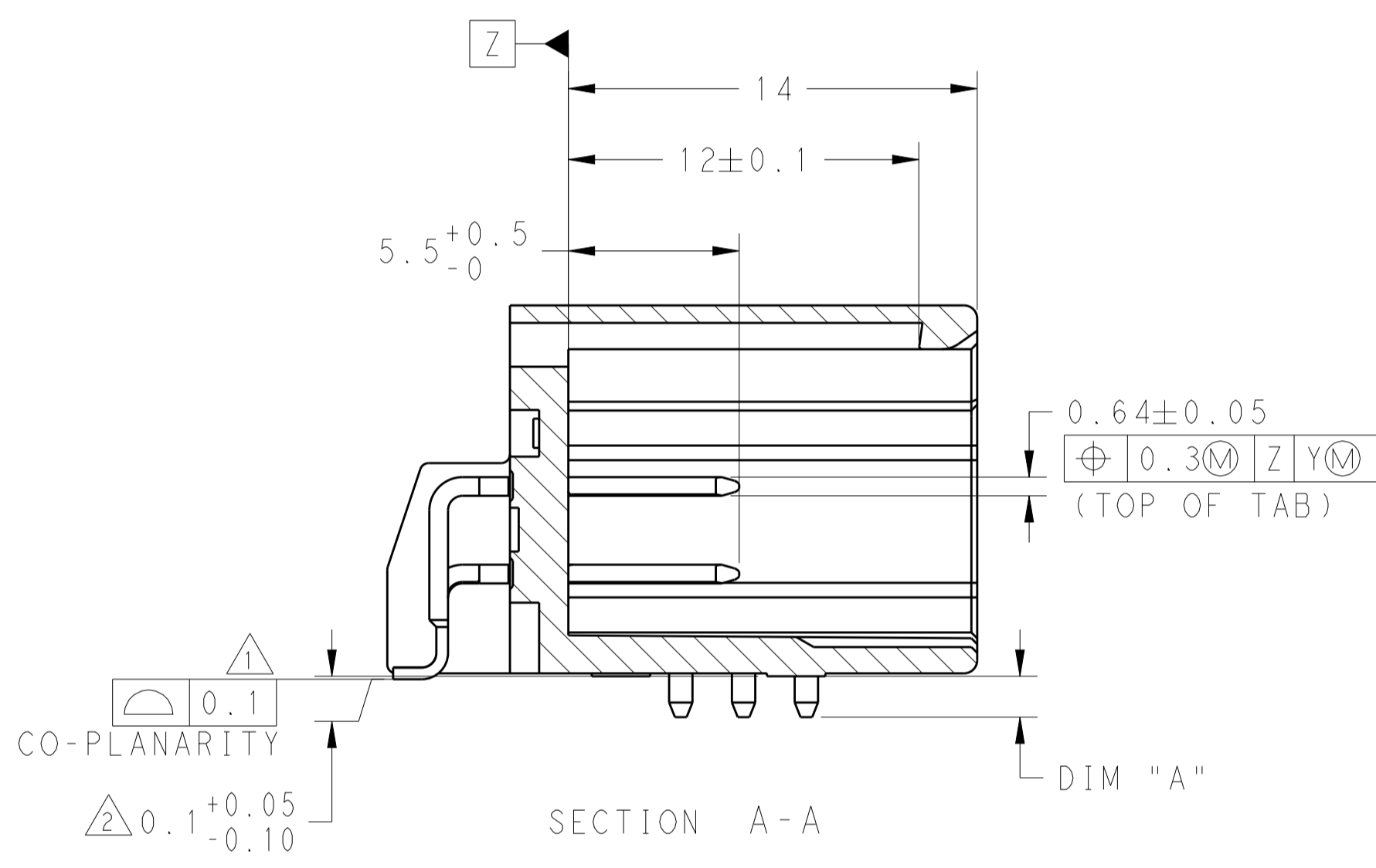
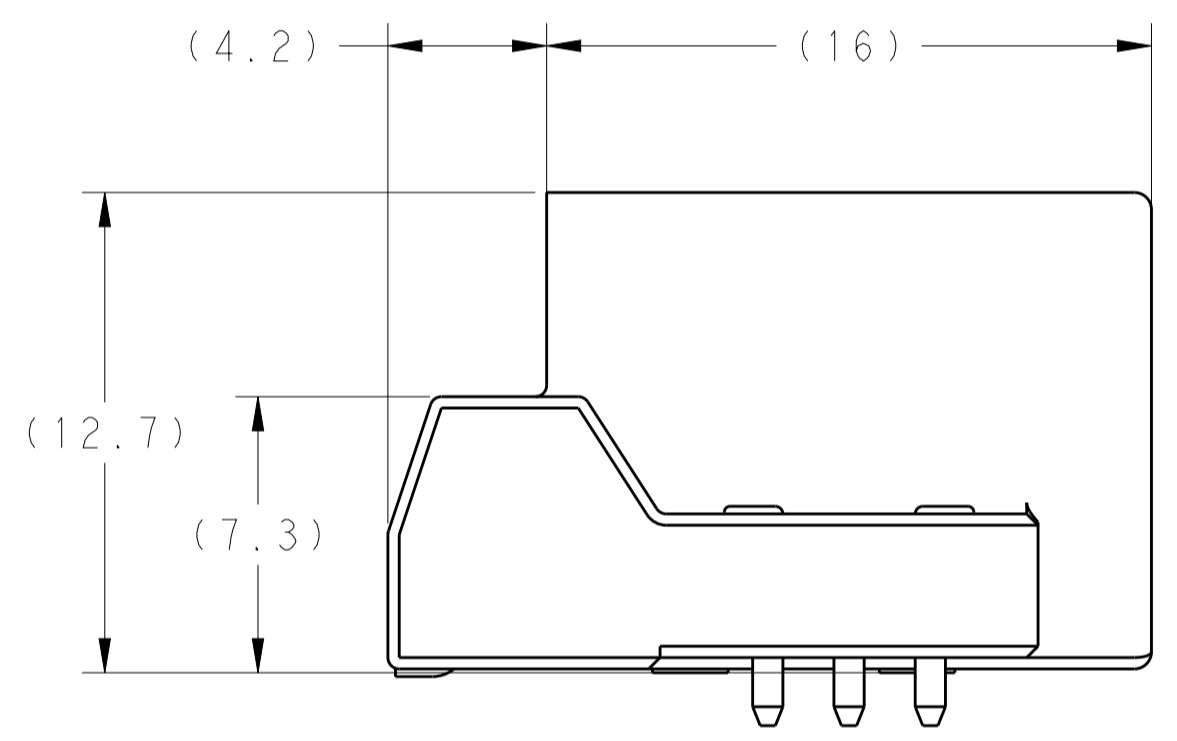
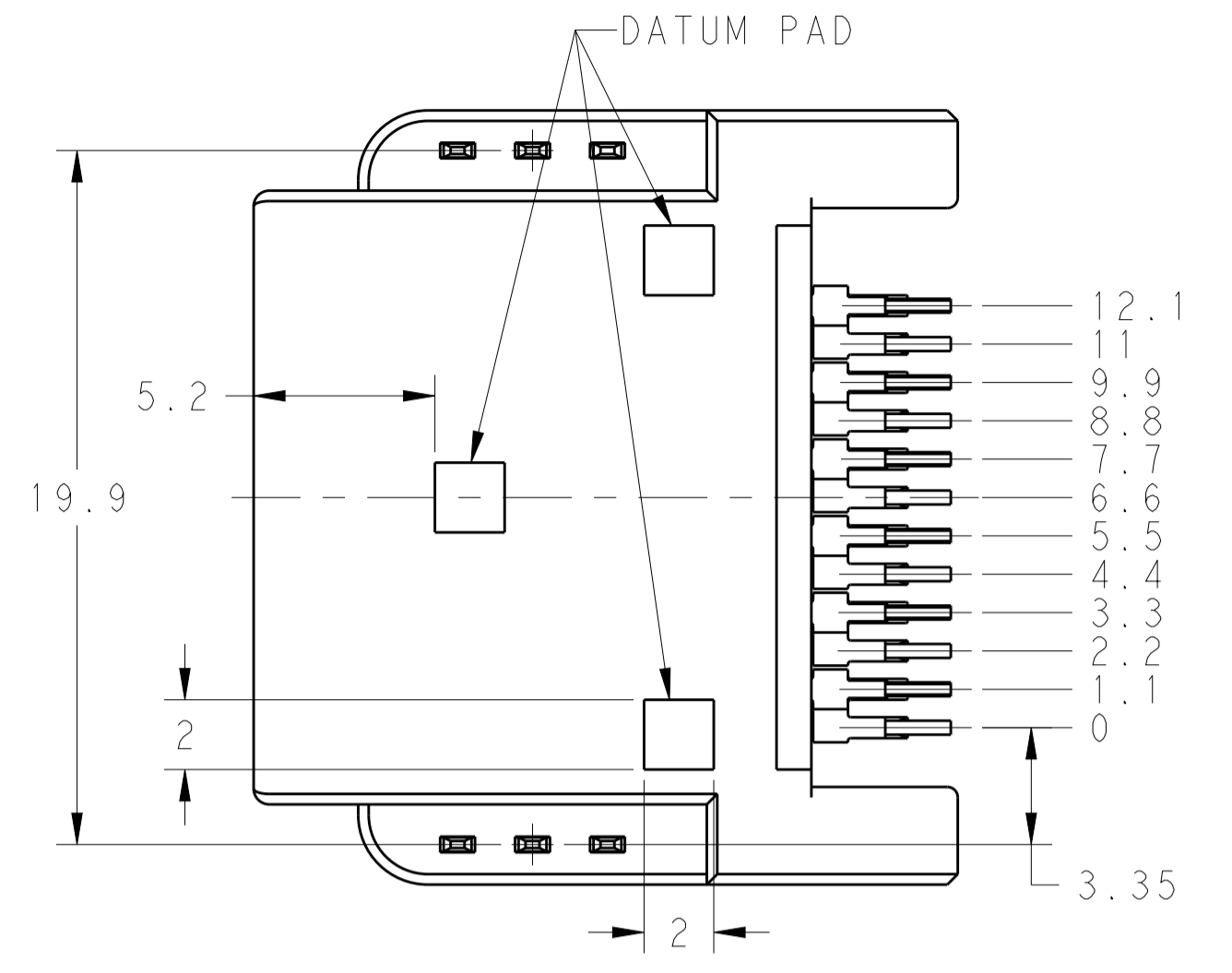
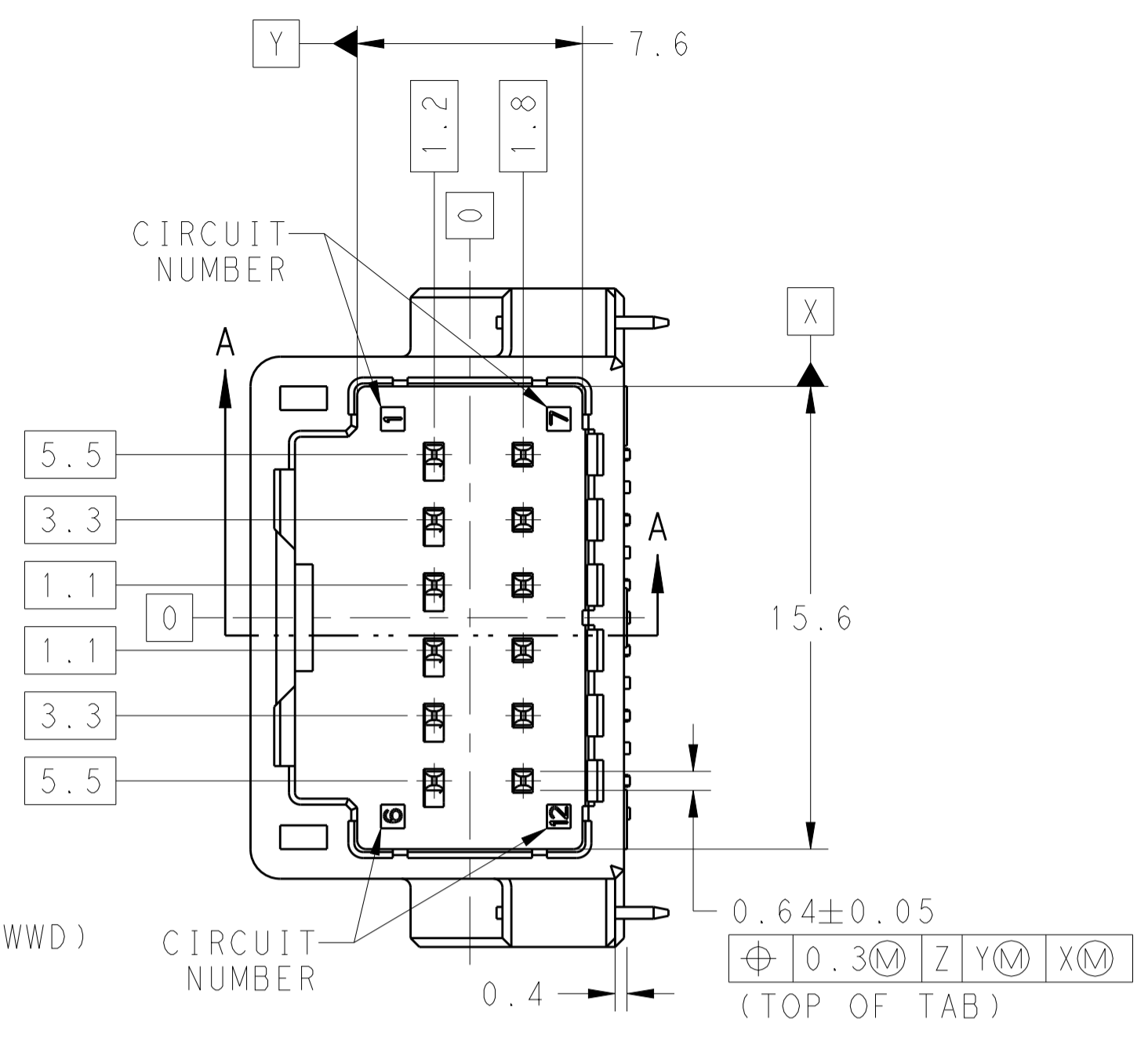
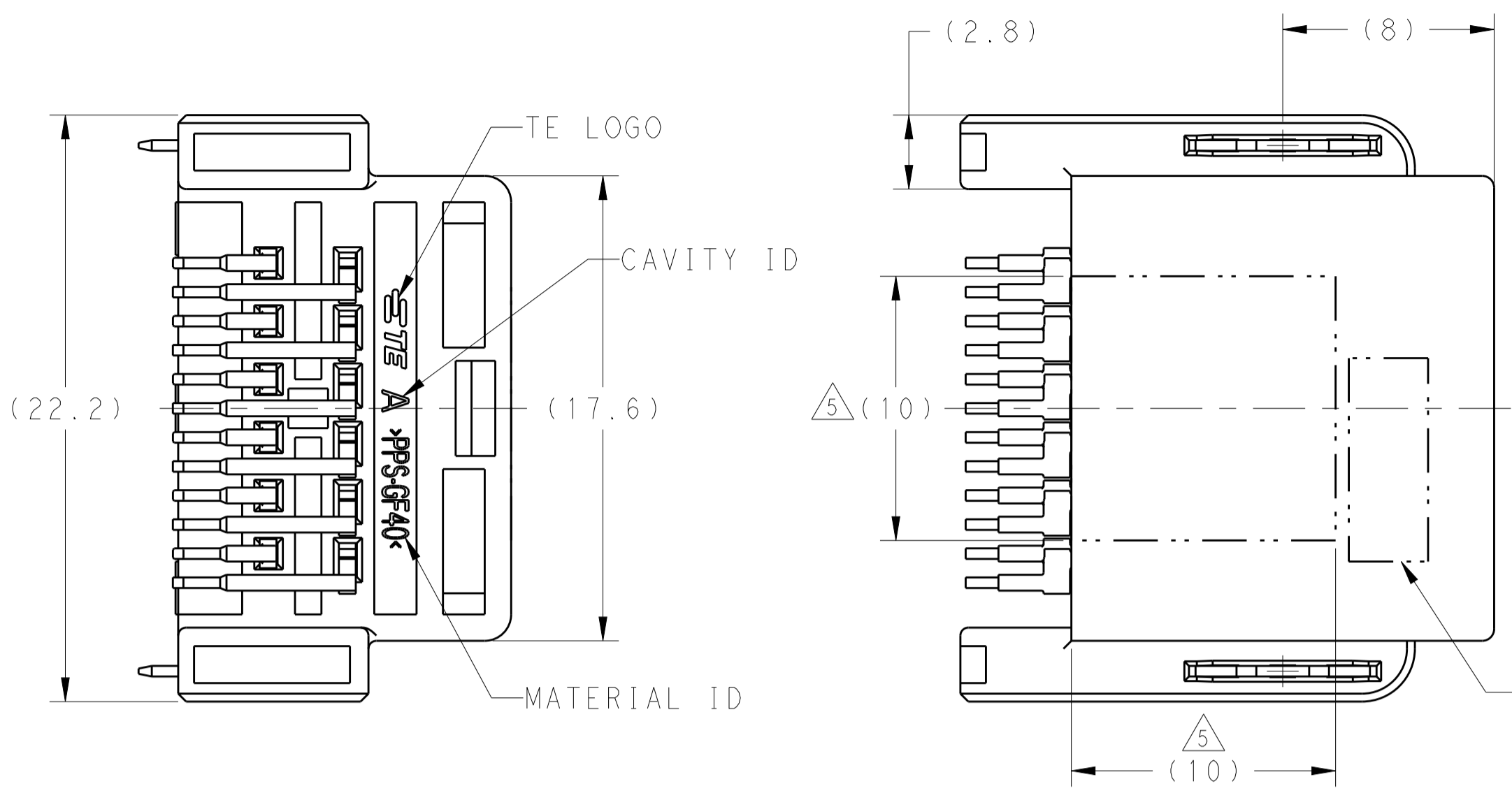


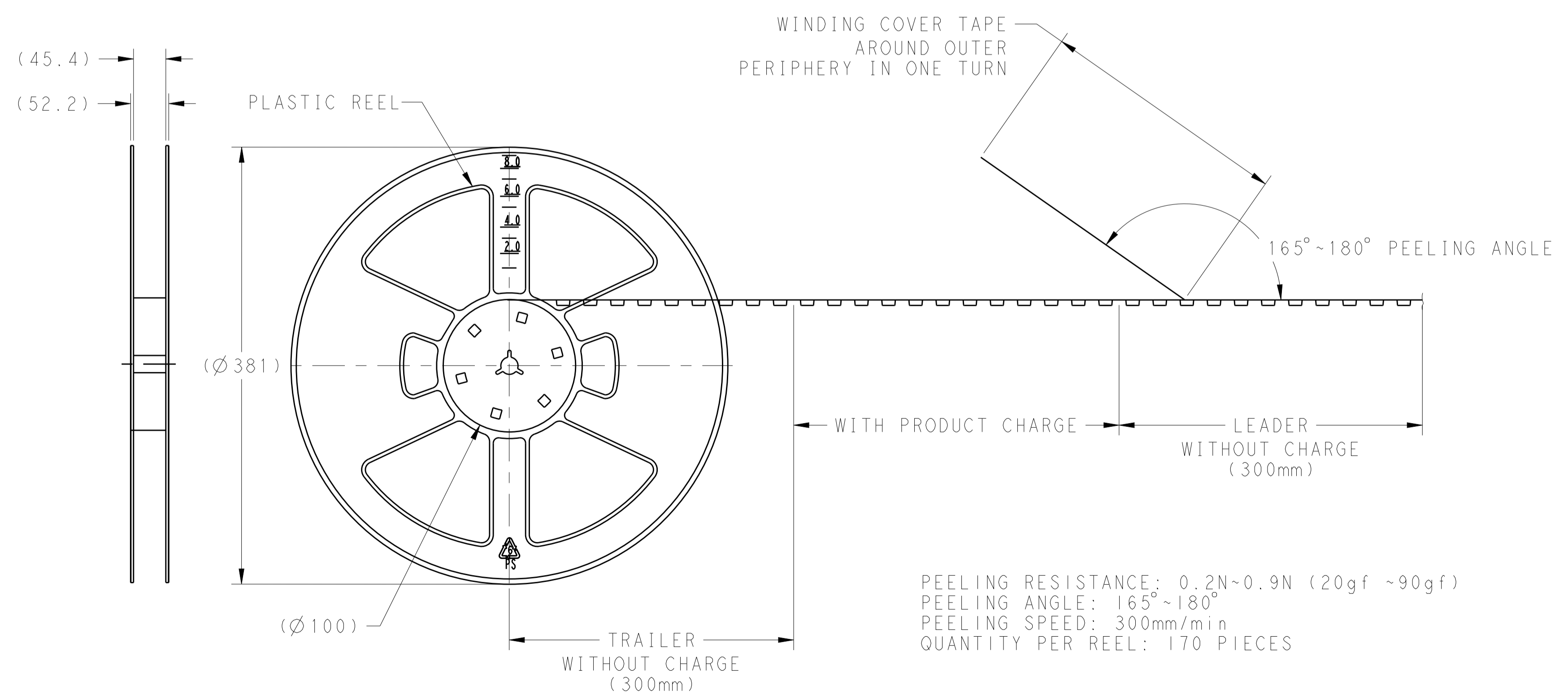
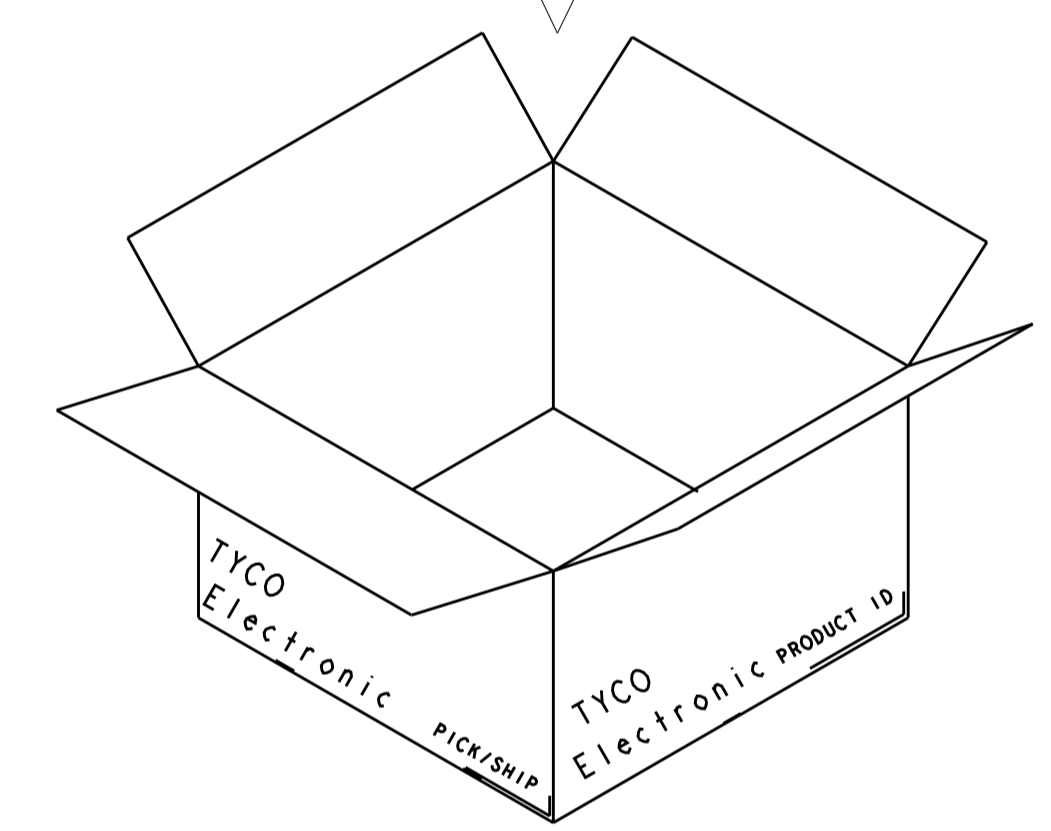
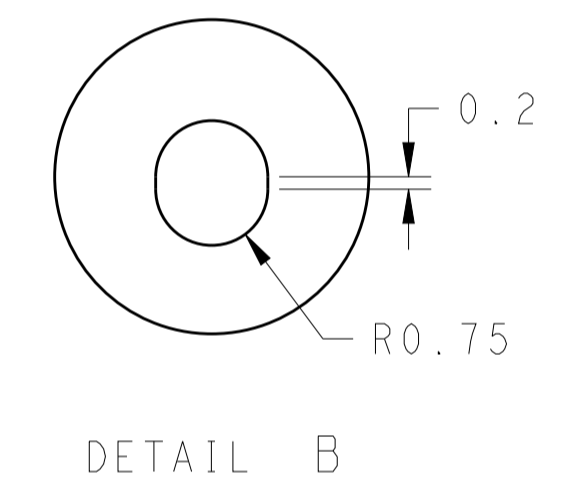
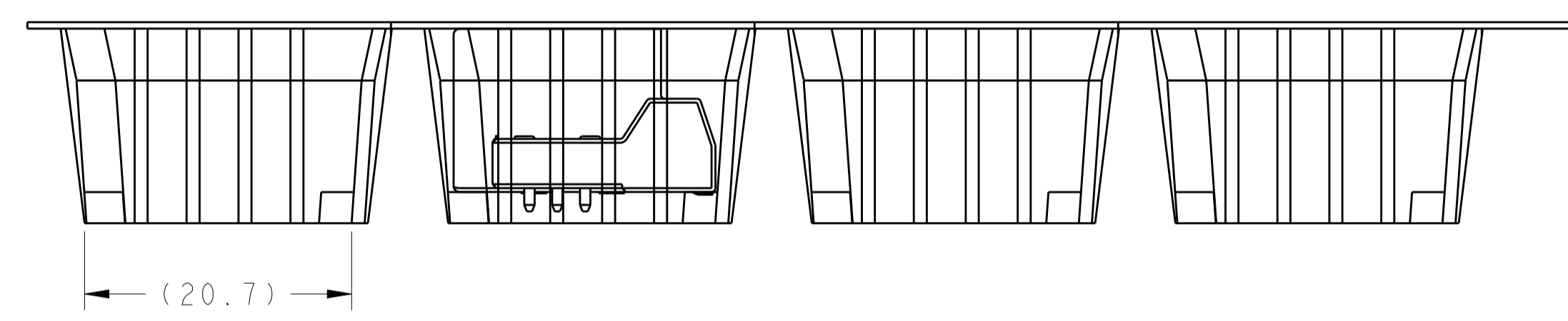
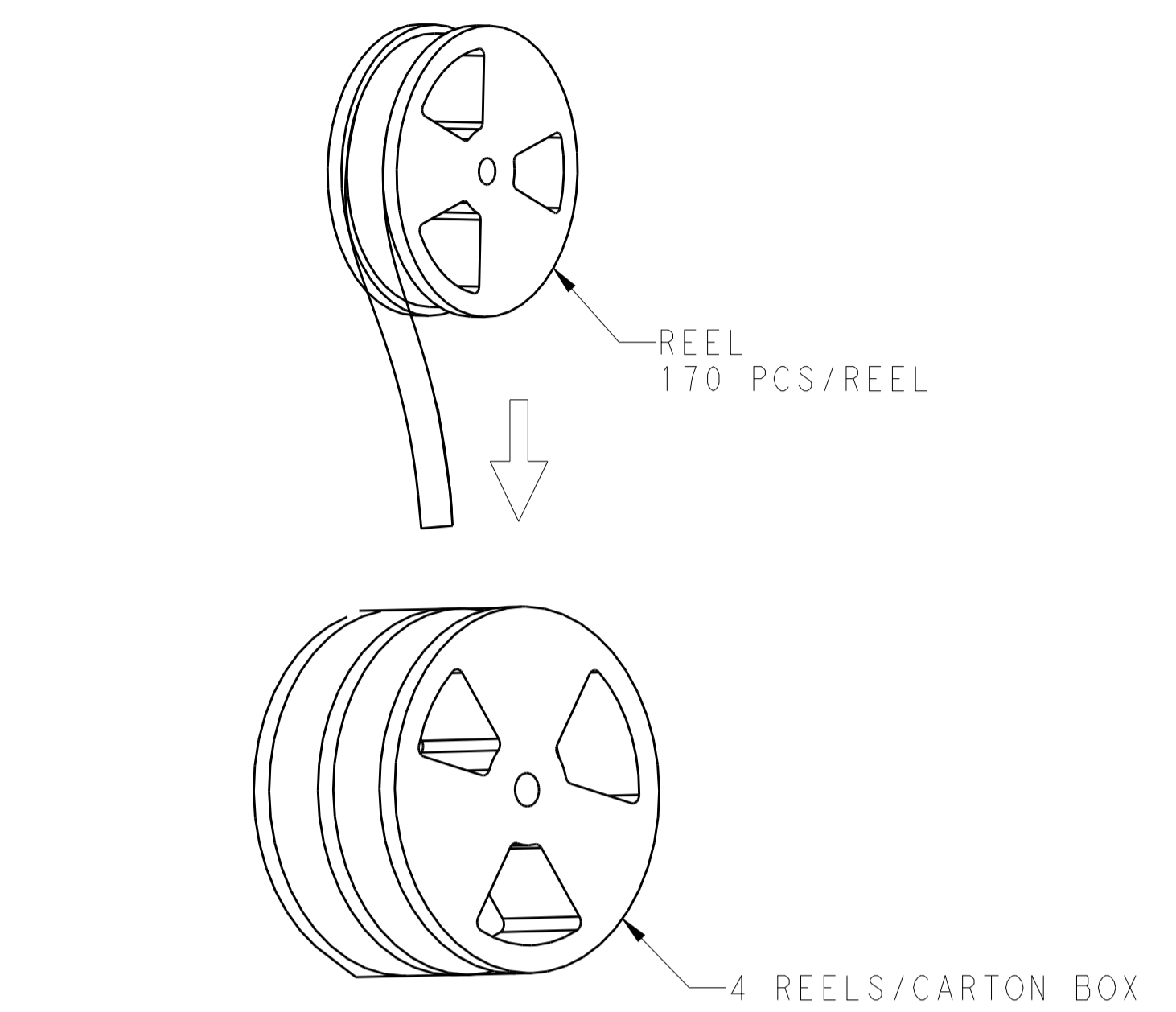
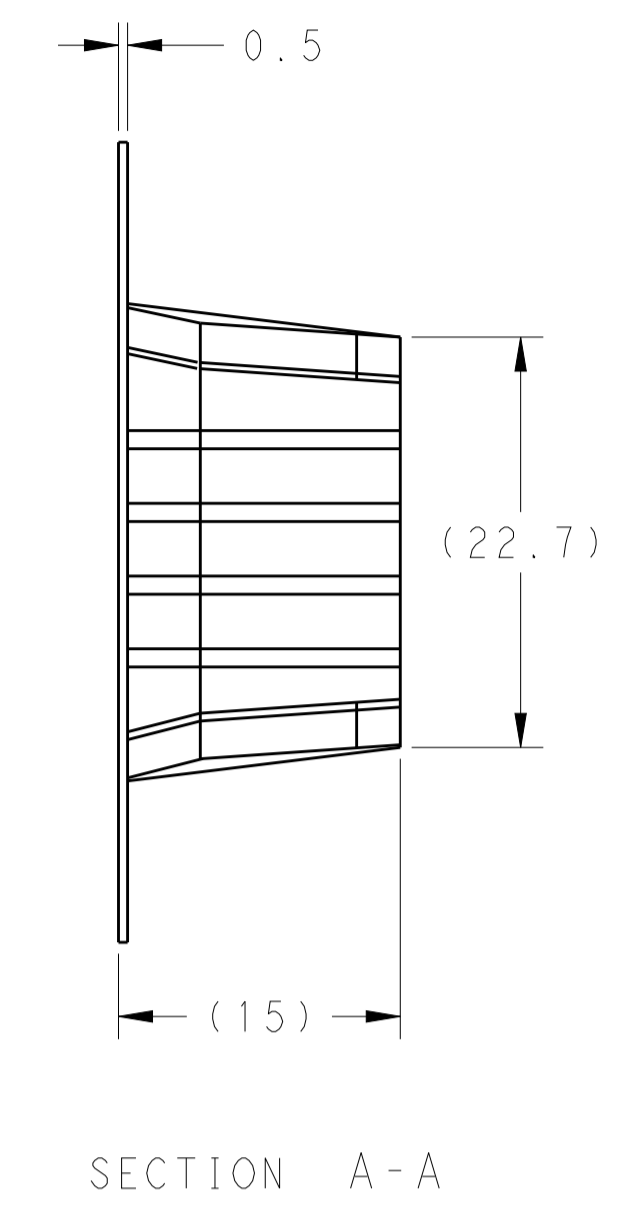
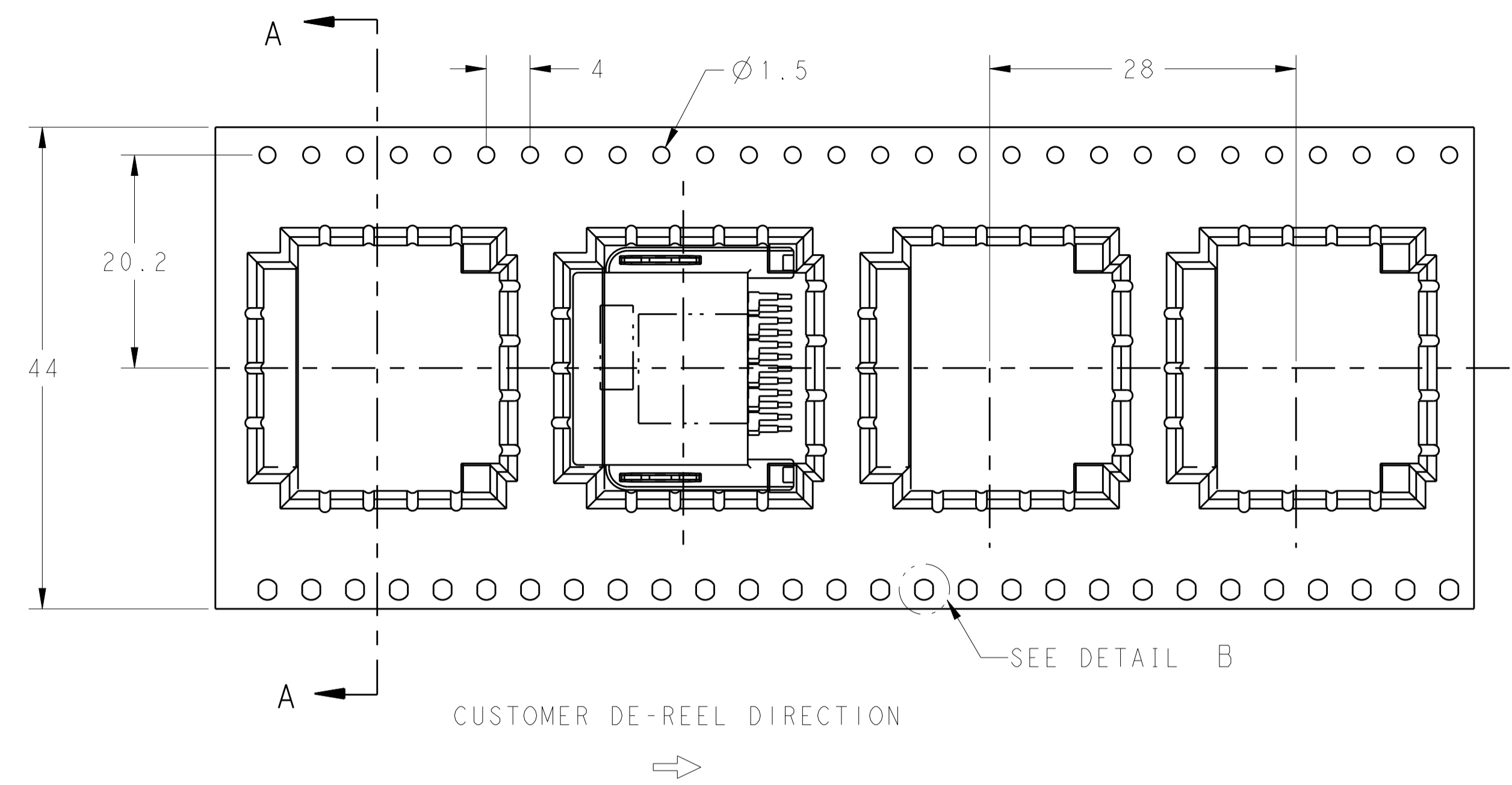
REVISIONS				
P.	LTN.	DESCRIPTION	DATE	APVD.
A		REVISED ECR-18-004726	29MAR2018	JC LSF
A1		REVISED ECR-20-005123	30DEC2019	JC TK



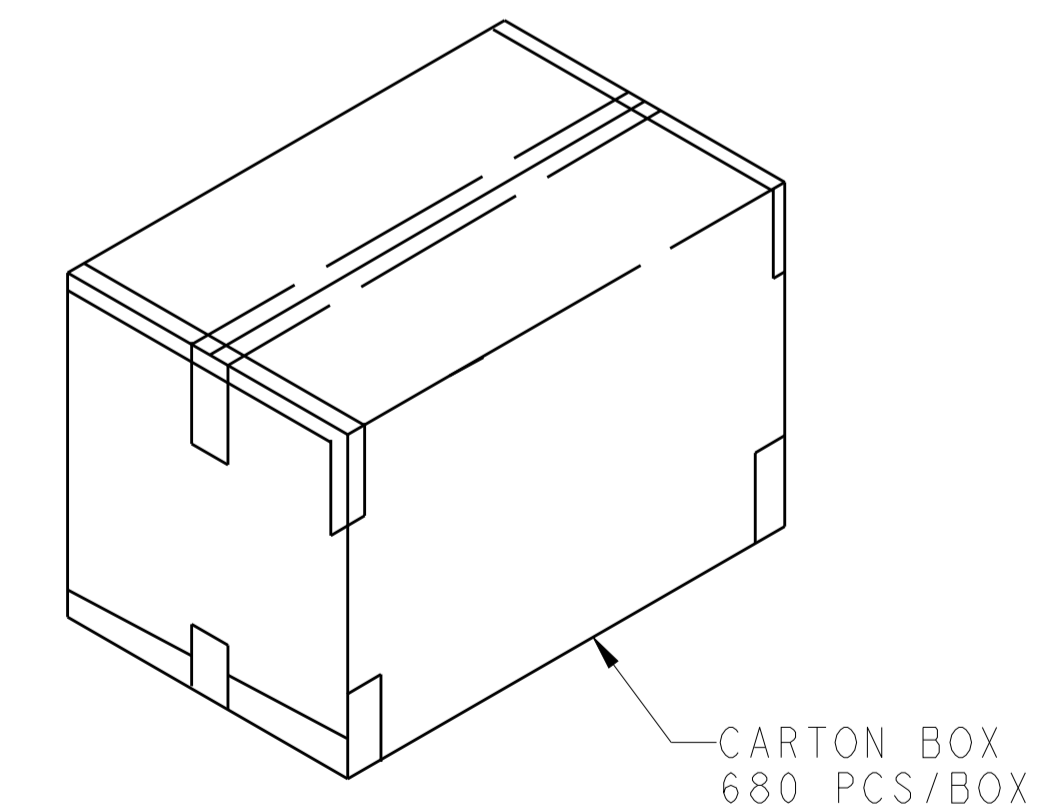
- NOTE:
- $\triangle$  THIS DIMENSION IS MEASURED FROM LOWEST SOLDDERTAIL TO HIGHEST SOLDDERTAIL ALL SOLDDERTAILS TO BE BELOW DATUM PAD
  - $\triangle$  MEASURED FROM DATUM PAD TO SOLDDERTAIL
  - 3. WHEN MOUNTING, THICKNESS OF SOLDER PASTE: 0.15mm MIN
  - 4. MATING PLUG PART NUMBER: 1717106-1, 1746872-1
  - $\triangle$  RECOMMENDED AREA FOR CONNECTOR VACUUM PICK UP
  - 6. HANDLING THIS PART SHOULD FOLLOW INSTRUCTION SHEET: 411-51005
  - $\triangle$  DATUMS AND BASIC DIMENSIONS ESTABLISHED BY CUSTOMER

2.8	BRASS	POST TIN OVER Ni	BRASS	POST TIN OVER Ni	PPS	BLACK	2291173-2																																						
1.4							2291173-1																																						
DIM "A"	MATERIAL	PLATING	MATERIAL	PLATING	MATERIAL	COLOR	PART NUMBER																																						
	SOLDER FORK		CONTACT		HOUSING																																								
DIMENSIONS: mm			TOLERANCES UNLESS OTHERWISE SPECIFIED:			THIS DRAWING IS A CONTROLLED DOCUMENT.																																							
<table border="1"> <tr><td>0 PLC</td><td>±0.3</td></tr> <tr><td>1 PLC</td><td>±0.3</td></tr> <tr><td>2 PLC</td><td>±0.3</td></tr> <tr><td>3 PLC</td><td>±0.3</td></tr> <tr><td>4 PLC</td><td>±0.3</td></tr> <tr><td>ANGLES</td><td>±0.3</td></tr> </table>			0 PLC	±0.3	1 PLC	±0.3	2 PLC	±0.3	3 PLC	±0.3	4 PLC	±0.3	ANGLES	±0.3	<table border="1"> <tr><td>DRN</td><td>JASON CHOW</td><td>30DEC2015</td></tr> <tr><td>CHK</td><td>JIL LIM</td><td>30DEC2015</td></tr> <tr><td>APPD</td><td>SE LEONG</td><td>30DEC2015</td></tr> <tr><td>NAME</td><td colspan="2">12 POSITION CAP ASSEMBLY</td></tr> <tr><td>PRODUCT SPEC</td><td colspan="2">108-51110</td></tr> <tr><td>APPLICATION SPEC</td><td colspan="2"></td></tr> <tr><td>SIZE</td><td>CAGE CODE</td><td>DRAWING NO</td></tr> <tr><td>RESTRICTED TO</td><td colspan="2"></td></tr> </table>			DRN	JASON CHOW	30DEC2015	CHK	JIL LIM	30DEC2015	APPD	SE LEONG	30DEC2015	NAME	12 POSITION CAP ASSEMBLY		PRODUCT SPEC	108-51110		APPLICATION SPEC			SIZE	CAGE CODE	DRAWING NO	RESTRICTED TO					TE Connectivity	
0 PLC	±0.3																																												
1 PLC	±0.3																																												
2 PLC	±0.3																																												
3 PLC	±0.3																																												
4 PLC	±0.3																																												
ANGLES	±0.3																																												
DRN	JASON CHOW	30DEC2015																																											
CHK	JIL LIM	30DEC2015																																											
APPD	SE LEONG	30DEC2015																																											
NAME	12 POSITION CAP ASSEMBLY																																												
PRODUCT SPEC	108-51110																																												
APPLICATION SPEC																																													
SIZE	CAGE CODE	DRAWING NO																																											
RESTRICTED TO																																													
MATERIAL	SEE TABLE	FINISH	SEE TABLE	WEIGHT	3.5g	A100779 ©=2291173																																							
CUSTOMER DRAWING				SCALE	5:1	SHEET	1 OF 2																																						

REVISIONS				
P.	LTN.	DESCRIPTION	DATE	APVD.
-	-	SEE SHEET 1	-	-



PEELING RESISTANCE: 0.2N~0.9N (20gf ~90gf)  
 PEELING ANGLE: 165°~180°  
 PEELING SPEED: 300mm/min  
 QUANTITY PER REEL: 170 PIECES



THIS DRAWING IS A CONTROLLED DOCUMENT.		OWN: JASON CHOW 30DEC2015	TE Connectivity
DIMENSIONS: mm		CHK: JIL LIM 30DEC2015	
TOLERANCES UNLESS OTHERWISE SPECIFIED:		APVD: SE LEONG 30DEC2015	NAME: 12 POSITION CAP ASSEMBLY
0 PLC	±0.3	PRODUCT SPEC	SIZE: CAGE CODE DRAWING NO
1 PLC	±0.3	APPLICATION SPEC	RESTRICTED TO
2 PLC	±0.3		A100779C=2291173
3 PLC	±0.3		
4 PLC	±0.3		
ANGLES	±0.3		
MATERIAL	FINISH	WEIGHT	CUSTOMER DRAWING
		SCALE: NTS	SHEET 2 OF 2 REV A1