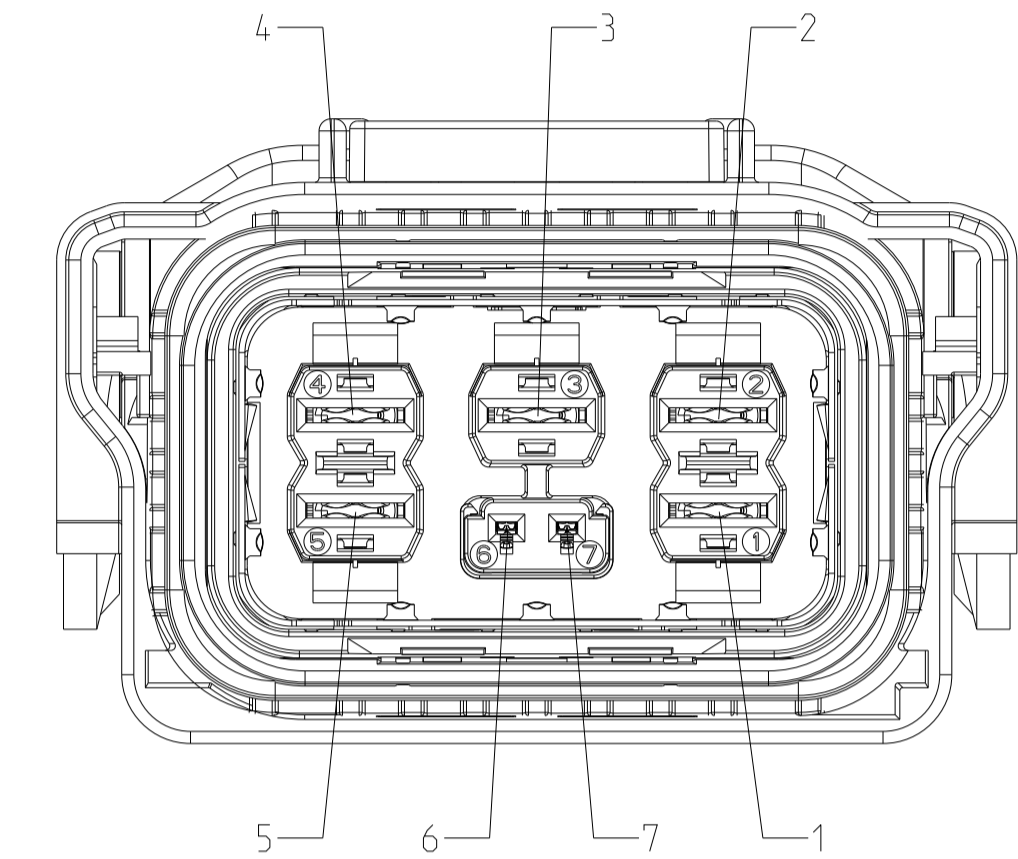
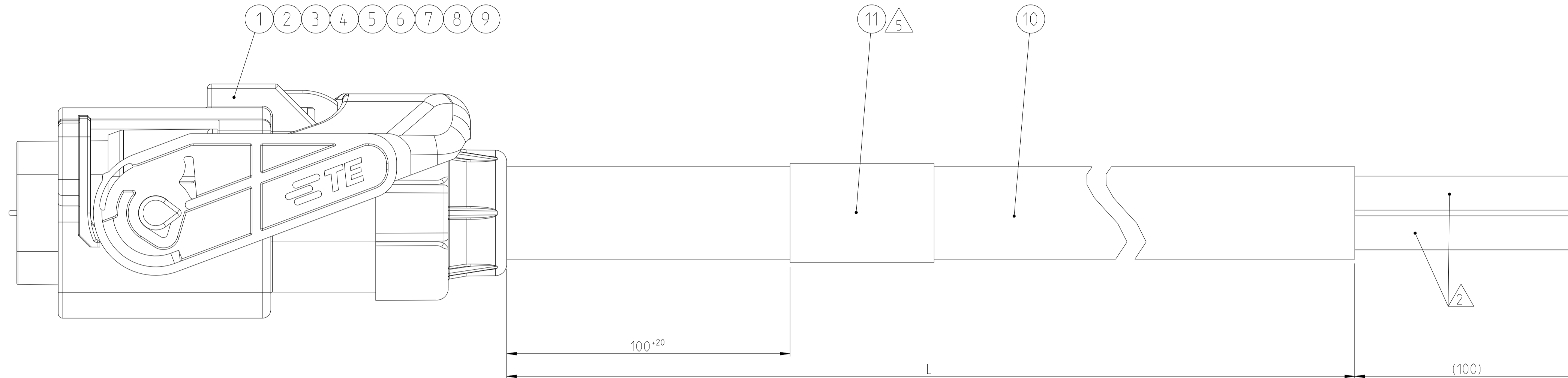


THE DRAWING SHOWS THE 2-DIMENSIONAL REFERENCE COMPONENT CONDITION OF THE ASSEMBLY TO IDENTIFY AND SPECIFY THE NECESSARY DIMENSIONS ONLY. THE DELIVERED PARTS MAY DEVIATE FROM THE DRAWING REGARDING THE ORIENTATION AND POSITION OF EACH COMPONENT (e.g. SLACK CABLE), SO FAR THE FUNCTIONALITY IS NOT CONCERNED.

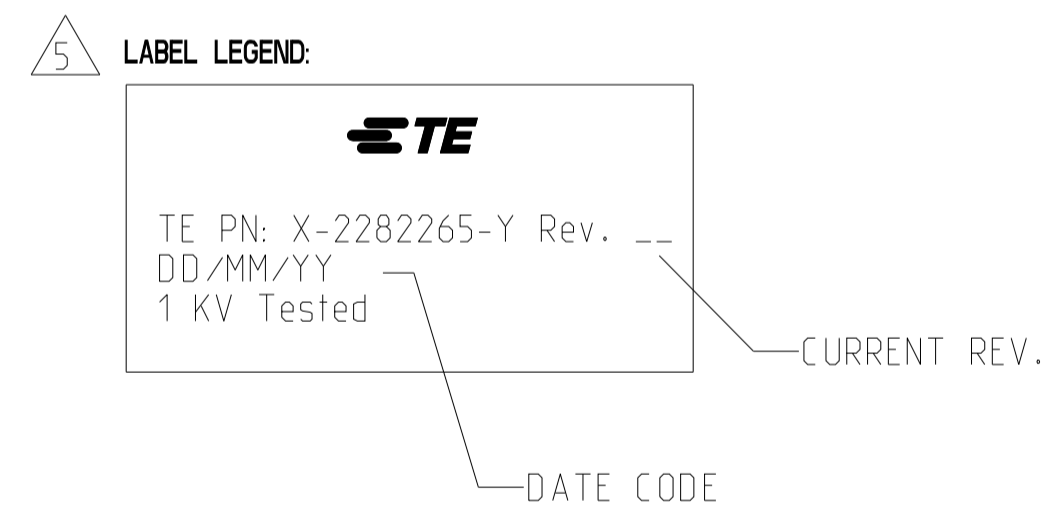
DIE ZEICHNUNG ZEIGT DEN 2-DIMENSIONALEN IDEALZUSTAND DES ZUSAMMENBAUTEILS BEZÜGLICH DER KOMPONENTEN ZUR IDENTIFIKATION UND SPEZIFIKATION DER NOTWENDIGEN DIMENSIONEN. HINSICHTLICH DER ORIENTIERUNG UND DER LAGE DER KOMPONENTEN (Z.B. BIEGESCHLAPPE KABEL) KÖNNEN DIE DELIEFERTEN TEILE VON DER ZEICHNUNG ABWEICHEN, SOFERN DIE FUNKTIONALITÄT NICHT BEEINTRÄCHTIGT IST.

REVISIONS				
P	LTN	DESCRIPTION	DATE	OWN APVD
H1		NEW VARIANTS ADDED	04SEP2018	JM DB
J		COMPONENT REVISION CHANGE	31OCT2018	JS JS
K		COMPONENT REVISION CHANGE	22JUL2021	DS JT
K1		PACKAGING UPDATED	10OCT2023	OS JT



WIRING SCHEDULE:

CAVITY-NO.	WIRE COLOR
1	GREEN-YELLOW
2	GREY
3	BLACK
4	BROWN
5	BLUE



LENGTH SCHEDULE:

WITHOUT CPA			
TE PART NO.	REV.	LENGTH L (mm)	TOL (mm)
1-2282265-1	J	1000	+30
1-2282265-2	J	2000	+35
1-2282265-3	J	3000	+40
1-2282265-4	J	4000	+50
1-2282265-5	J	5000	+60
1-2282265-6	G	6000	+70
1-2282265-7	C	10000	+110
WITH CPA			
2-2282265-1	J	1000	+30
2-2282265-2	J	2000	+35
2-2282265-3	J	3000	+40
2-2282265-4	J	4000	+50
2-2282265-5	J	5000	+60
2-2282265-6	G	6000	+70
2-2282265-7	C	10000	+110

NOTES

- 1 Min. bending radius HV cables: min. 4x cable D (fixed installation)
- △ Electrical test according TE specification 108-18857, Chapter 3.3.
Use current revision always.
Stripped outer jacket, braid, inner sheath and cut filler for electrical test purpose.
- 3 TE Product Specifications: 108-94235
TE Application Specification: 114-18388 (AMP MCP 6.3/4.8K Contact System)
114-94114
- K1 4 Packaging: According pack. instr. V2282265
- Connector of each part in protecting foam. Harness in carton box.
- Damages to be avoided
- 5 Label:
- Printed with TE part number, TE revision, production date

QTY	QTY	DESCRIPTION	ITEM NO.
2-X	1-X		
1	1	LABEL TAG6TD1-1206-WHCL	11
-	-	CABLE, 5x6 mm ²	10
1	1	COVER, CABLE SEAL	9
1	1	CARRIER, SEAL	8
1	1	RADIAL SEAL 25 X 43, CABLE SEAL	7
1	1	SHIELD CRIMP FERRULE	6
1	1	SHIELD CRIMP FERRULE, INNER	5
2	2	SHIELDING, 5-2 POS HV CONN	4
5	5	MCP6.3/4.8K CONTACT	3
1	1	2 POS. MCON-1.2, REC HSG. ASSY. CODE A	2
1	-	5 POS. AMP MCP6.3/4.8K, REC HSG. A, WITH CPA	1
-	1	5 POS. AMP MCP6.3/4.8K, REC HSG. A, WITHOUT CPA	1

TOLERANCING EN ISO 8015
TOLERIERUNG EN ISO 8015

DIESE ZEICHNUNG IST EIN KONTROLLIERTES DOKUMENT.
BEMASSUNGEN UND TOLERANZEN GEMAESS GPS (ISO STANDARDS).

THIS DRAWING IS A CONTROLLED DOCUMENT.
DIMENSIONING AND TOLERANCING PER GPS (ISO STANDARDS).

DIMENSIONS: mm

TOLERANCES UNLESS OTHERWISE SPECIFIED:

0 PLC # # #
1 PLC # # #
2 PLC # # #
3 PLC # # #
4 PLC # # #
ANGLES # # #

MATERIAL: -
FINISH: -

WEIGHT: -

CUSTOMER DRAWING

APVD: M. Folk
M. Folk
A. Brettschi

DATE: 27MAY2014
27MAY2014
28MAY2014

PRODUCT SPEC: see note 4
APPLICATION SPEC: -

NAME: 5 POS. HV. CONN., PIGTAIL, HYB ASSY
5x6 sqmm

SIZE: A
CAGE CODE: 00779
DRAWING NO: C=2282265

RESTRICTED TO: -

SCALE: 2:1
SHEET: 1 OF 1
REV: K1