

THIS DRAWING IS UNPUBLISHED.

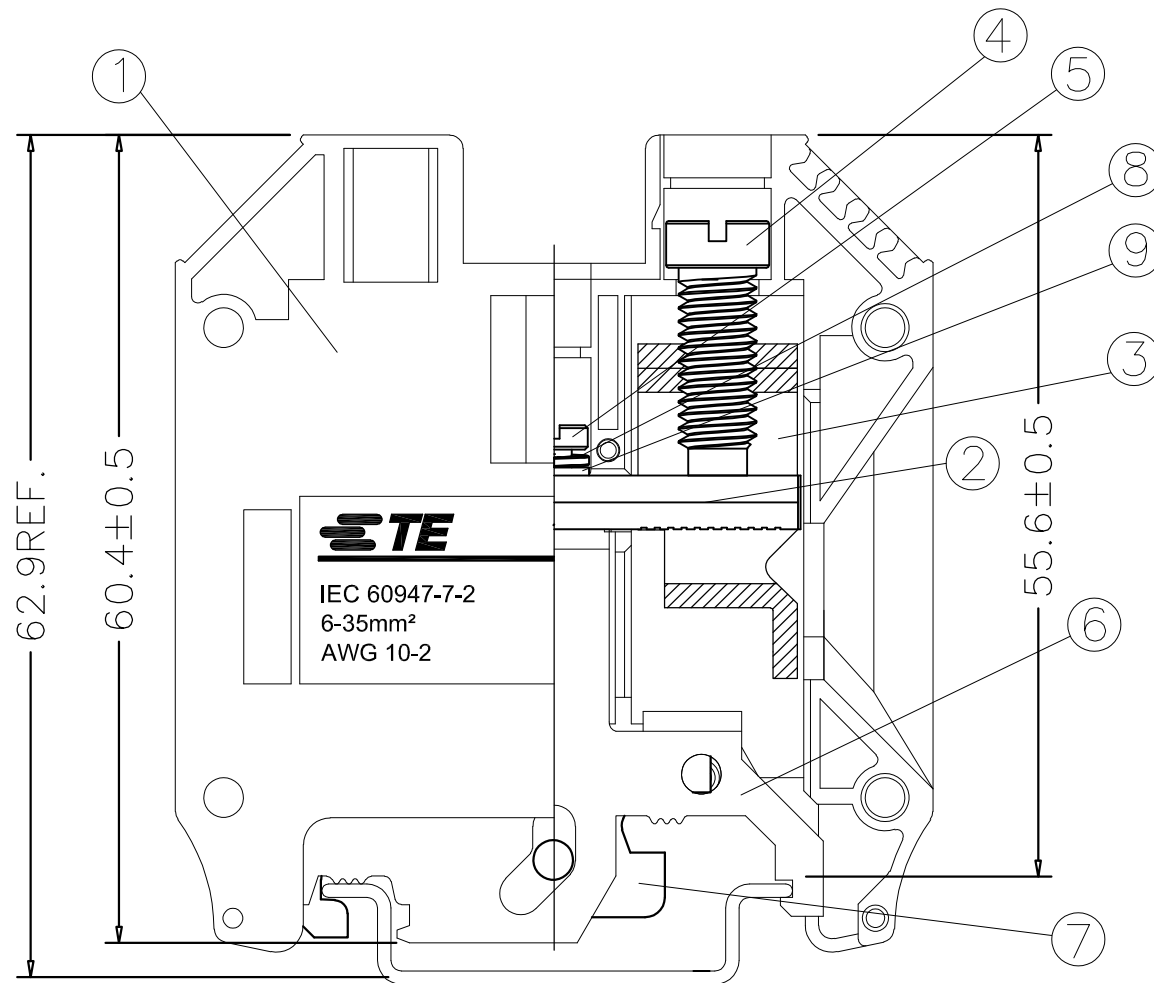
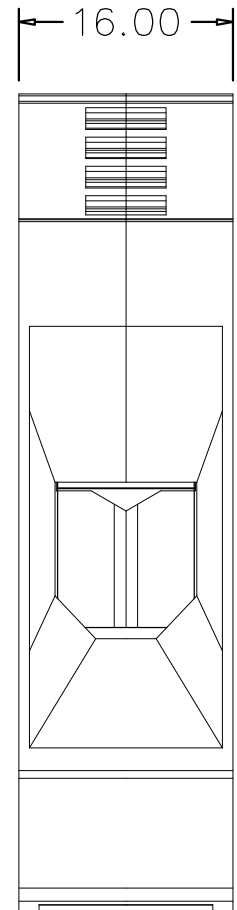
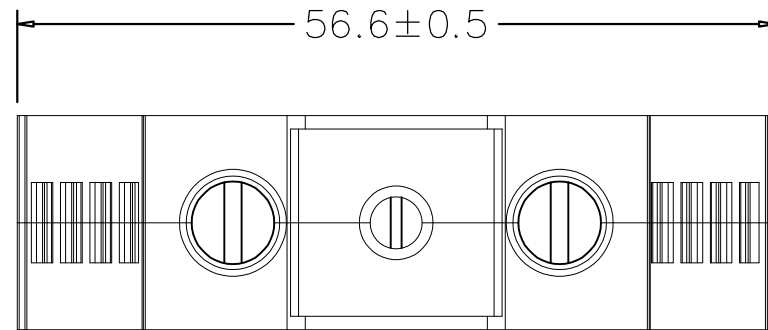
RELEASED FOR PUBLICATION

REVISIONS

© COPYRIGHT - By -

ALL RIGHTS RESERVED.

P	LTR	DESCRIPTION	DATE	DWN	APVD
	A	OFFICIAL VERSION RELEASE	25DEC2016	F.Y	X.X




ITEM	COMPONENTS	MATERIAL	Q'TY	PLATING
9	FLAT WASHER	STEEL	1	ZINC Plated
8	ELASTIC WASHER	STEEL	1	ZINC Plated
7	LOCK TERMINAL	STEEL	1	ZINC Plated
6	GROUND TERINAL	COPPER ALLOY	1	Tin Plated
5	MOUNTING SCREW	STEEL	1	ZINC Plated
4	TERMINAL SCREW	STEEL	2	ZINC Plated
3	CAGE CLAMP	STEEL	2	ZINC Plated
2	TERMINAL	COPPER	1	Tin Plated
1	HOUSING	THERMOPLASTIC	2	

DTC 35-G	2271692-1	GREEN-YELLOW
TE SERIES No.	PART NUMBER	COLOR

NOTES:

1. Material: See table
2. Impulse withstand voltage: 8KV
3. Terminal Screw Size & torque: M6, 51lbs-in(5.86Nm)
4. Mounting screw size & torque: M3, 4.5-5.6lbs-in(0.52-0.65Nm)
5. Wire strip length: 14-18mm
6. Suitable wire size : (UL)10 - 2 AWG , , (IEC)6-35mm²
7. Requirement for environmental substance must be compliance with ROHS and REACH.

THIS DRAWING IS A CONTROLLED DOCUMENT.		DWN FENCER YU 25DEC2016	 TE Connectivity														
DIMENSIONS: mm		CHK KOBBY ZHAO 25DEC2016															
TOLERANCES UNLESS OTHERWISE SPECIFIED:		APVD XIANG XU 25DEC2016	NAME 35mm <sup>2</sup> WIRE 1 IN 1 OUT SCREW TYPE TERMINAL BLOCK WITH GROUND FUNCTION														
<table border="1"> <tr><td>0 PLC</td><td>± 0.50</td></tr> <tr><td>1 PLC</td><td>± 0.40</td></tr> <tr><td>2 PLC</td><td>± 0.30</td></tr> <tr><td>3 PLC</td><td>± -</td></tr> <tr><td>4 PLC</td><td>± -</td></tr> <tr><td>ANGLES</td><td>± 3°</td></tr> </table>		0 PLC	± 0.50	1 PLC	± 0.40	2 PLC	± 0.30	3 PLC	± -	4 PLC	± -	ANGLES	± 3°	PRODUCT SPEC 108-137173	SIZE A3		
0 PLC	± 0.50																
1 PLC	± 0.40																
2 PLC	± 0.30																
3 PLC	± -																
4 PLC	± -																
ANGLES	± 3°																
MATERIAL		APPLICATION SPEC 114-137172	CAGE CODE 00779	DRAWING NO C-2271692	RESTRICTED TO												
FINISH		WEIGHT 75 g	SCALE 1:1														
		CUSTOMER DRAWING		SHEET 1 OF 1	REV A												