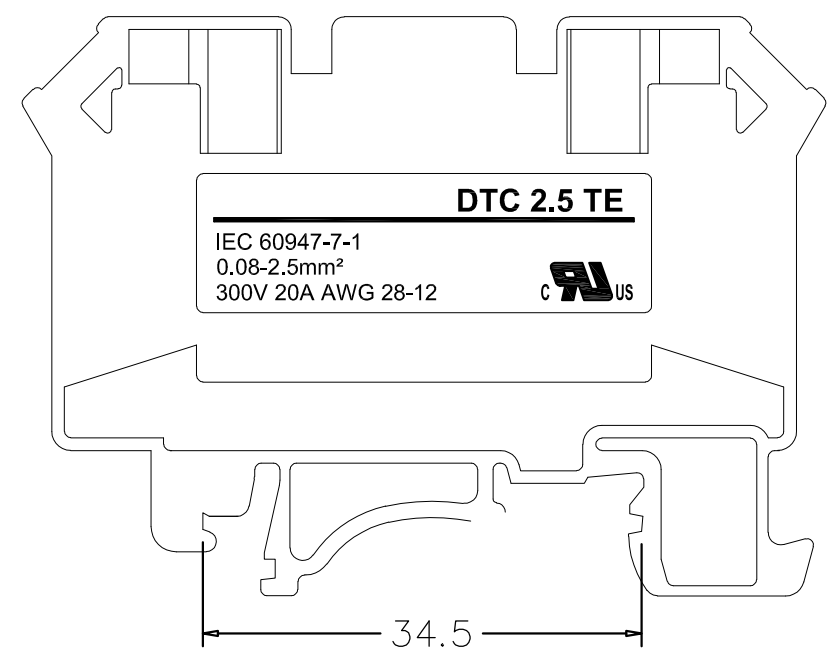
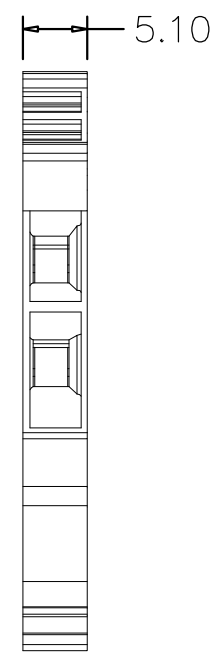
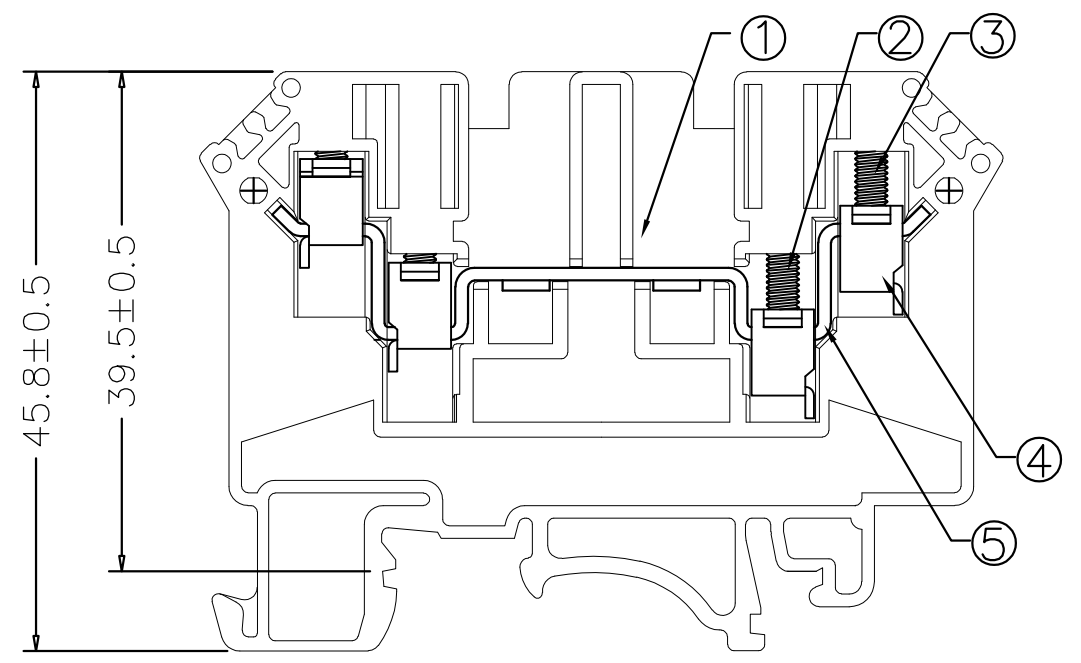
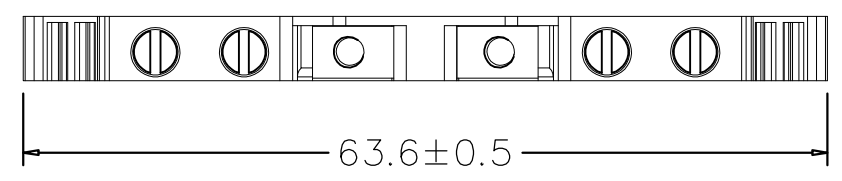


THIS DRAWING IS UNPUBLISHED. RELEASED FOR PUBLICATION
 © COPYRIGHT - By - ALL RIGHTS RESERVED.

REVISIONS				
P	LTR	DESCRIPTION	DATE	APVD
	A	OFFICIAL VERSION RELEASE	25MAR2017	F.Y X.X



NOTES:

1. Material: See table
2. Rated current & voltage : (UL)20Amp 300V , (IEC)24Amp 500V
3. Impulse withstand voltage: 6KV
4. Screw Size & torque: M2.6, 4-4.5 lbs-in(0.46-0.52Nm)
5. Wire strip length: 8-10mm
6. Suitable wire size : (UL)28 - 12 AWG , (IEC)0.08-2.5mm²
7. Requirement for environmental substance must be compliance with ROHS and REACH.

ITEM	COMPONENTS	MATERIAL	Q'TY	PLATING
5	TERMINAL	COPPER ALLOY	1	Tin Plated
4	CLAMP	STEEL	4	Zinc Plated
3	SCREW2	STEEL	2	Zinc Plated
2	SCREW1	STEEL	2	Zinc Plated
1	HOUSING	THERMOPLASTIC	1	

DTC 2.5 TE	2271679-5	BLACK
	2271679-4	ORANGE
	2271679-3	RED
	2271679-2	BLUE
	2271679-1	GRAY
TE SERIES No.	PART NUMBER	COLOR

THIS DRAWING IS A CONTROLLED DOCUMENT.		DWN FENCER YU 25MAR2017	STE TE Connectivity	
DIMENSIONS: mm		CHK XIANG XU 25MAR2017		
TOLERANCES UNLESS OTHERWISE SPECIFIED:		APVD XIANG XU 25MAR2017	NAME	
0 PLC ± 0.50		108-137172		
1 PLC ± 0.40		APPLICATION SPEC		
2 PLC ± 0.30		114-137172		
3 PLC ± -		SIZE		
4 PLC ± -		CAGE CODE		
ANGLES ± 3°		DRAWING NO		
MATERIAL SEE TABLE		RESTRICTED TO		
FINISH -		A3 00779 C-2271679		
		CUSTOMER DRAWING		SCALE 1:1
				SHEET 1 OF 1
				REV A