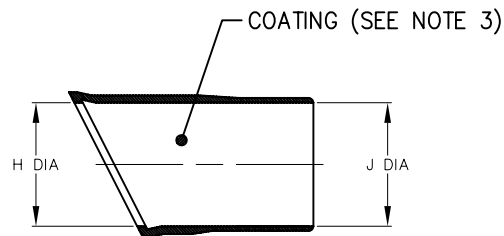
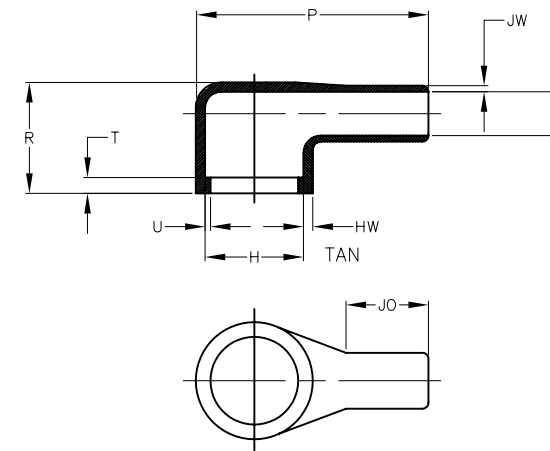


NOTES

- ALL DIMENSIONS ARE IN $\frac{\text{INCHES}}{[\text{MILLIMETERS}]}$
- DIMENSIONS APPEARING IN TABLE ARE AS FOLLOWS:
 - AS SUPPLIED
 - AFTER UNRESTRICTED RECOVERY
- COATING (ADHESIVE):
AS SUPPLIED DIMENSIONS APPEARING IN TABLE ARE FOR UNCOATED PARTS. WHEN COATING IS ADDED, ENTRY DIAMETER WILL BE REDUCED BY .06 MAX.



AS SUPPLIED



AFTER UNRESTRICTED RECOVERY

TABLE OF DIMENSIONS

PART NUMBER	H		J		P $\pm 10\%$ b	R REF b	T REF b	U REF b	JO REF b	HW $\pm 20\%$ b	JW $\pm 20\%$ b
	MIN	MAX	MIN	MAX							
	a	b	a	b							
222D221-25-13/225	$\frac{1.01}{[25,6]}$	$\frac{.59}{[15,0]}$	$\frac{1.01}{[25,6]}$	$\frac{.29}{[7,3]}$	$\frac{1.56}{[39,6]}$	$\frac{.78}{[19,8]}$	$\frac{.12}{[3,0]}$	$\frac{.04}{[1,0]}$	$\frac{.58}{[14,7]}$	$\frac{.06}{[1,5]}$	$\frac{.045}{[1,1]}$

CUSTOMER DRAWING

COMPATIBILITY CHART

MATERIAL DASH NO.	MATERIAL DESCRIPTION	RT SPEC	COATING NO.	COATING SPEC
-25	ELASTOMER, FLUID RESISTANT	RT-1325	/225	S-1206

UNLESS OTHERWISE SPECIFIED DIMENSIONS ARE INCHES. METRIC DIMENSIONS ARE IN BRACKETS.		DRAWN UNGUYEN	DATE 03/26/2008
DECIMAL TOLERANCES .XXX \pm 0.005 [0.13 mm] .XX \pm 0.01 [0.25 mm] .X \pm 0.1 [0.50 mm]		RPN	
ANGLE TOLERANCE .X \pm 1 DEG.		THIRD ANGLE PROJECTION	
© 2008 Tyco Electronics Corporation. All rights reserved.			

			Raychem Molded Parts 305 Constitution Dr Menlo Park, CA 94025
TITLE BOOT, 90 DEGREE, WITH LIP			
SIZE B	CODE IDENT. NO. 06090	DWG. NO. 222D221-25-13/225	
DO NOT SCALE THIS DRAWING			SHEET 1 OF 1