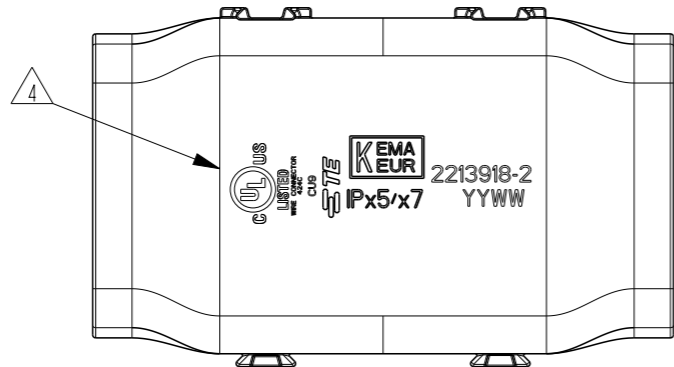
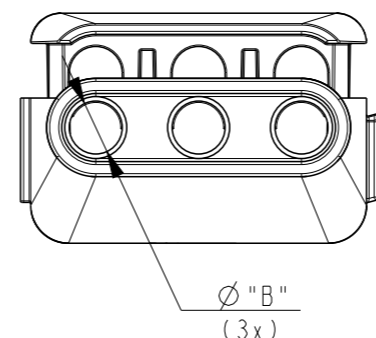
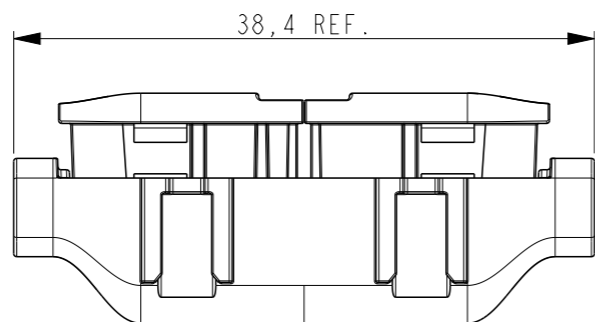
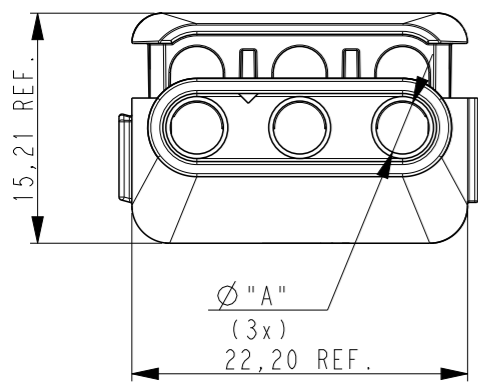
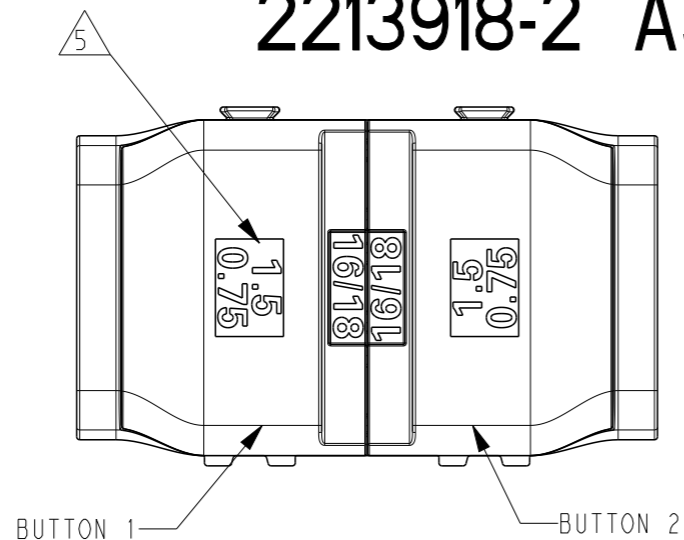


REVISIONS

P	LTR	DESCRIPTION	DATE	DWN	APVD
9		TE LOGO AND KEMA LOGO POSITION CHANGED	17SEP2018	RS	OL
10		SHT 1: DIM 15.21 REF CHANGED TO 15.00 REF	19SEP2018	RS	OL
11		NEW DESIGN	29AUG2019	RS	MG
12		DRAWING UPDATE ACC. NEW DESIGN	18JUN2020	SD	MZ

2213918-2 AS SHOWN



NOTES:

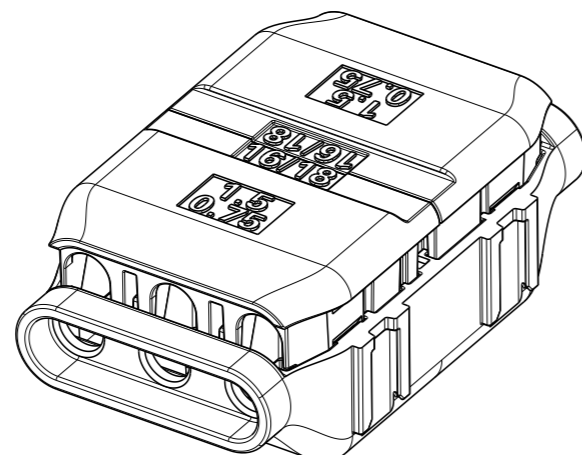
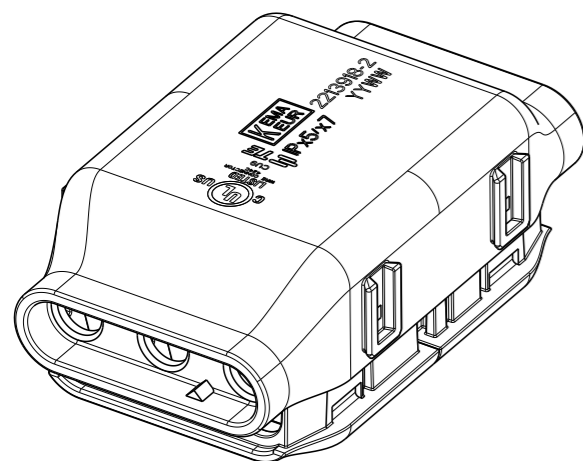
- CONNECTOR ACCEPTS MULTIPLE WIRES SIZES: SEE TABLE.
- HOUSING AND BUTTON MATERIAL : POLYCARBONATE.
- IDC CONTACT MATERIAL: TIN PLATED, COPPER ALLOY.
- LASER MARK LOGO'S: KEMA, PART NUMBER, UL, TE LOGO, DATE CODE, IP CLASS.
- WIRE SIZE.
- FOR WIRE INSULATION DIAMETER RANGE SEE DIMENSION "A" AND "B".

**PRELIMINARY PART
NOT RELEASED FOR PRODUCTION**

**CONTACT ENGINEERING FOR LAST
REVISION BEFORE USING THIS DRAWING**

Engineer: **S. DERMISEK**

HOUSING WIRE ENTRY	COLOR	WIRE SIZE	COLOR	WIRE SIZE	DESCRIPTION	PART NUMBER	AVAILABLE
A=3.00 B=3.00	GREEN	AWG22/20 (0.33/0.52mm ²)	GREEN	AWG22/20 (0.33/0.52mm ²)	SEALED	2213918-6	YES
A=3.00 B=3.00	GREEN	AWG22/20 (0.33/0.52mm ²)	GREEN	AWG22/20 (0.33/0.52mm ²)	STANDARD	2213918-5	ON REQUEST
A=3.50 B=3.00	RED	AWG18/16 (0.75/1.5mm ²)	GREEN	AWG22/20 (0.33/0.52mm ²)	SEALED	2213918-4	YES
A=3.50 B=3.00	RED	AWG18/16 (0.75/1.5mm ²)	GREEN	AWG22/20 (0.33/0.52mm ²)	STANDARD	2213918-3	ON REQUEST
A=3.50 B=3.50	RED	AWG18/16 (0.75/1.5mm ²)	RED	AWG18/16 (0.75/1.5mm ²)	SEALED	2213918-2	YES
A=3.50 B=3.50	RED	AWG18/16 (0.75/1.5mm ²)	RED	AWG18/16 (0.75/1.5mm ²)	STANDARD	2213918-1	ON REQUEST



THIS DRAWING IS A CONTROLLED DOCUMENT.

DIMENSIONS:	TOLERANCES UNLESS OTHERWISE SPECIFIED:
mm	
	0 PLC ±-
	1 PLC ±-
	2 PLC ±-
	3 PLC ±-
	4 PLC ±-
	ANGLES ±3°
MATERIAL	FINISH
-	-
-	-

DWN	16 JAN 2017
RAGHAVENDRA.K	
CHK	16 JAN 2017
P. POORTER	
APVD	16 JAN 2017
O. LEIJNSE	
PRODUCT SPEC	108-133061
APPLICATION SPEC	114-133061
WEIGHT	-
CUSTOMER DRAWING	

TE TE Connectivity

NAME: **COOLSPLICE 3 POSITIONS**

SIZE	CAGE CODE	DRAWING NO	RESTRICTED TO
A3	00779	C-2213918	-

SCALE: 2:1 SHEET 1 OF 2 REV 12

4

3

2

1

THIS DRAWING IS UNPUBLISHED.

RELEASED FOR PUBLICATION

20

© COPYRIGHT 20

BY -

ALL RIGHTS RESERVED.

DIMENSIONS AFTER APPLICATION

2213918-2 AS SHOWN

2213918-2 AS SHOWN
2213918-1

2213918-4 AS SHOWN
2213918-3

2213918-6 AS SHOWN
2213918-5

15.21 REF.

**PRELIMINARY PART
NOT RELEASED FOR PRODUCTION**CONTACT ENGINEERING FOR LAST
REVISION BEFORE USING THIS DRAWING

Engineer: S. DERMISEK

THIS DRAWING IS A CONTROLLED DOCUMENT.

DIMENSIONS:

mm

TOLERANCES UNLESS
OTHERWISE SPECIFIED:

0 PLC	±-
1 PLC	±-
2 PLC	±-
3 PLC	±-
4 PLC	±-
ANGLES	±3°
FINISH	-

MATERIAL

-

DWN 16 JAN 2017

RAGHAVENDRA, K

CHK 16 JAN 2017

P. POORTER

APVD 16 JAN 2017

O. LEIJNSE

PRODUCT SPEC

108-133061

APPLICATION SPEC

114-133061

WEIGHT

-

CUSTOMER DRAWING

REVISIONS

P	LTR	DESCRIPTION	DATE	DWN	APVD
-	-	SEE SHEET 1	-	-	-

TE Connectivity

NAME
COOLSPLICE 3 POSITIONS

SIZE CAGE CODE DRAWING NO

A3 00779 C-2213918

RESTRICTED TO

-

SCALE 2:1

SHEET 2 OF 2

REV 12

1470-19 (3/13)