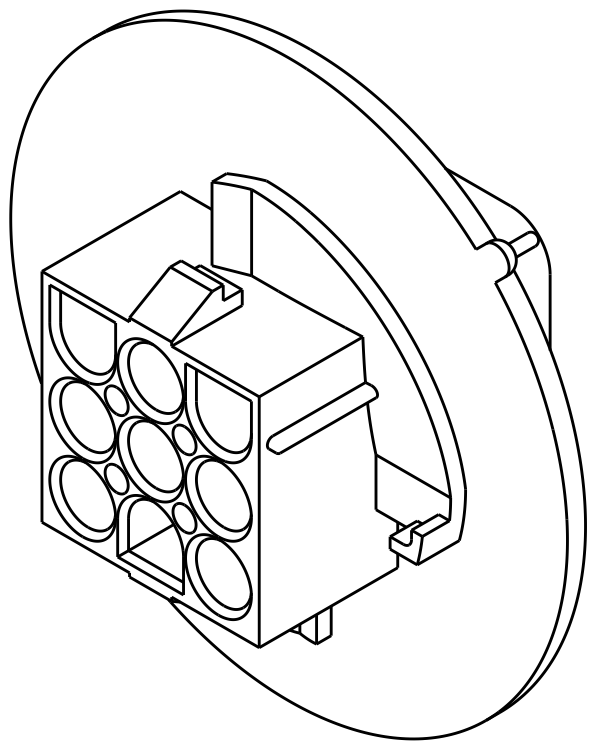
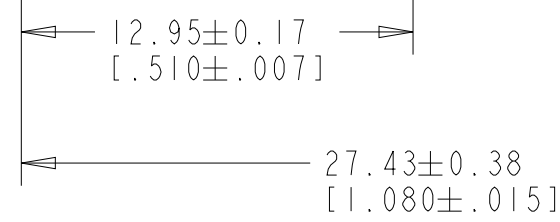
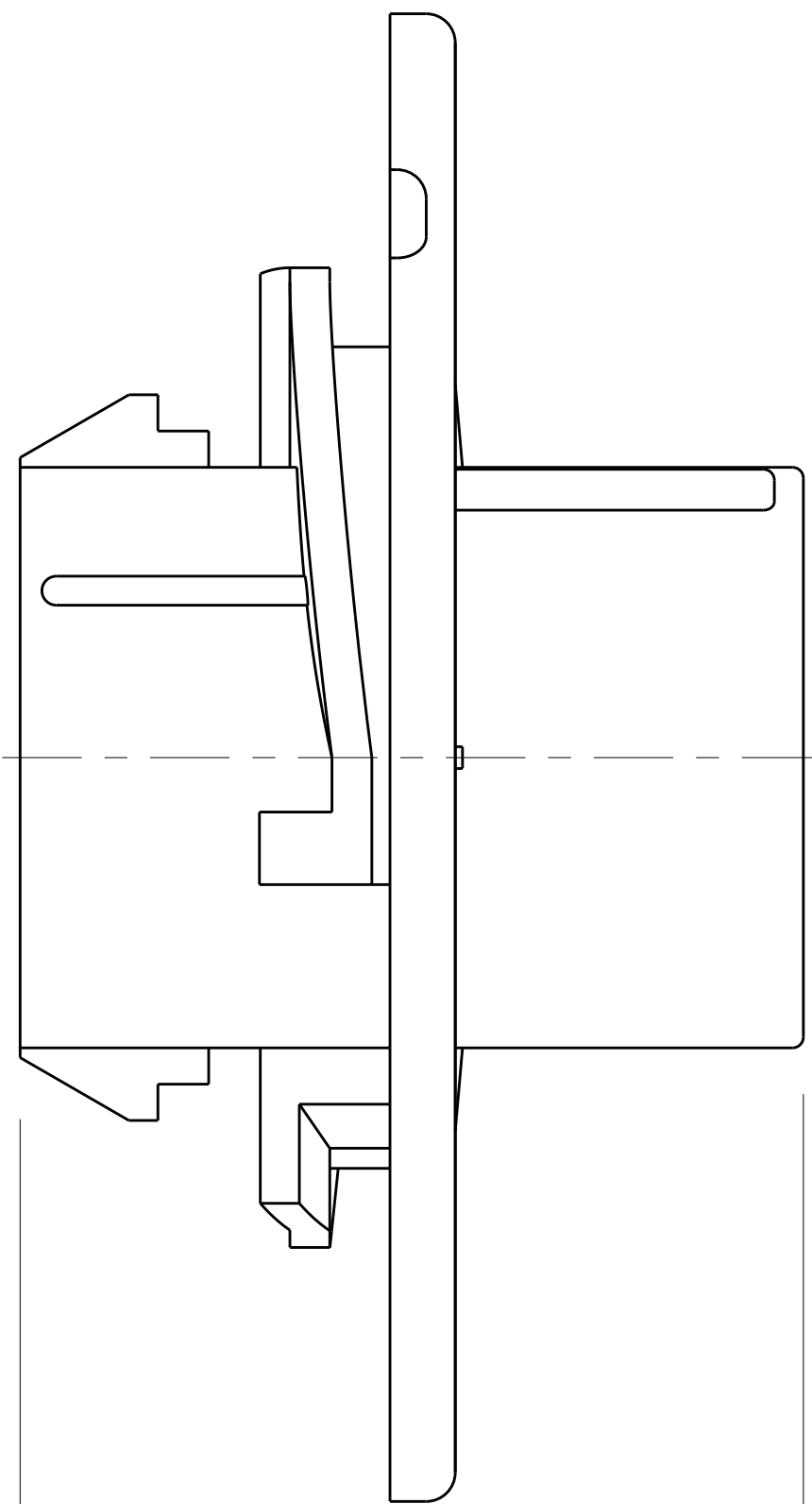
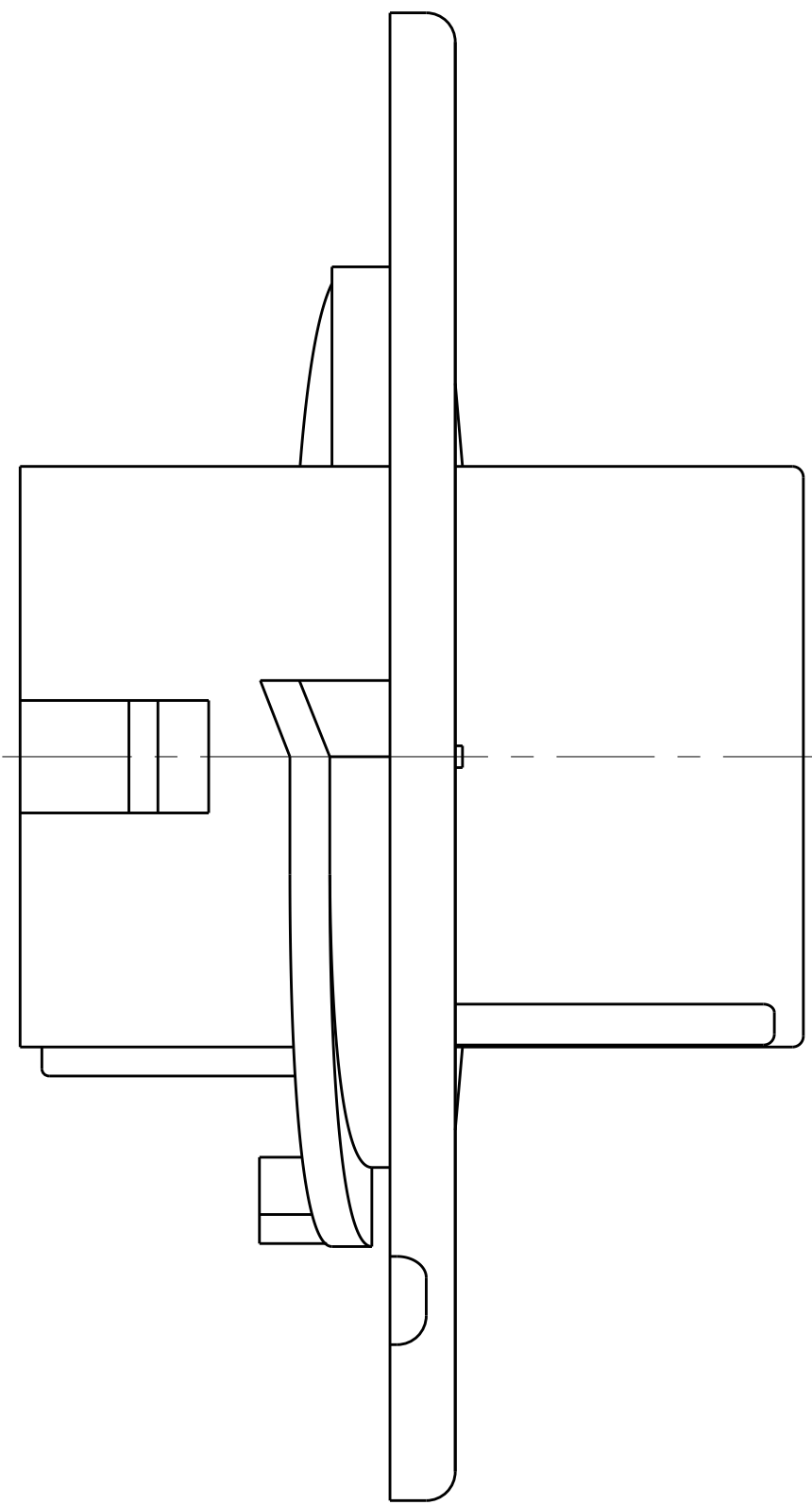
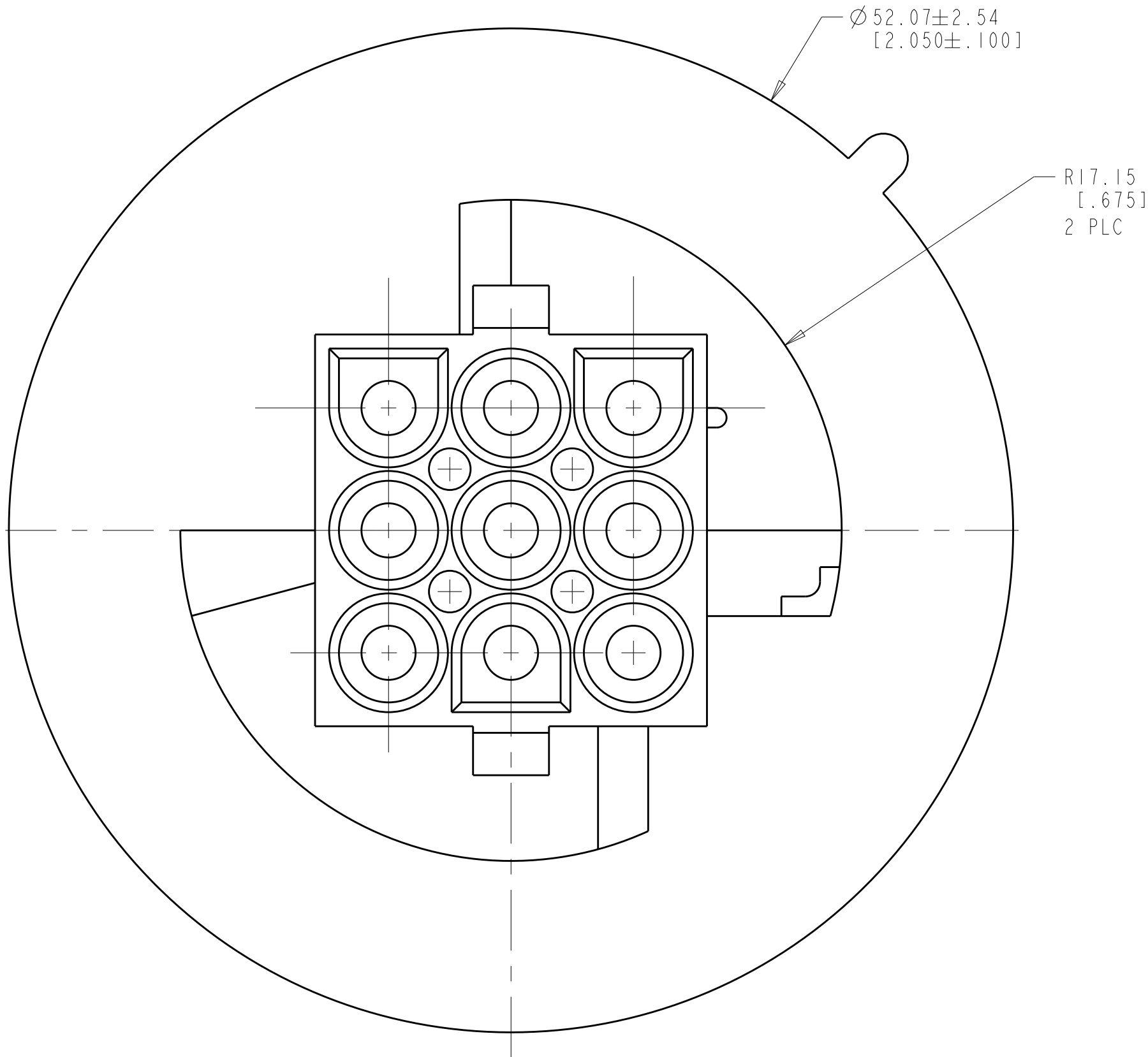


RECOMMENDED CUT OUT

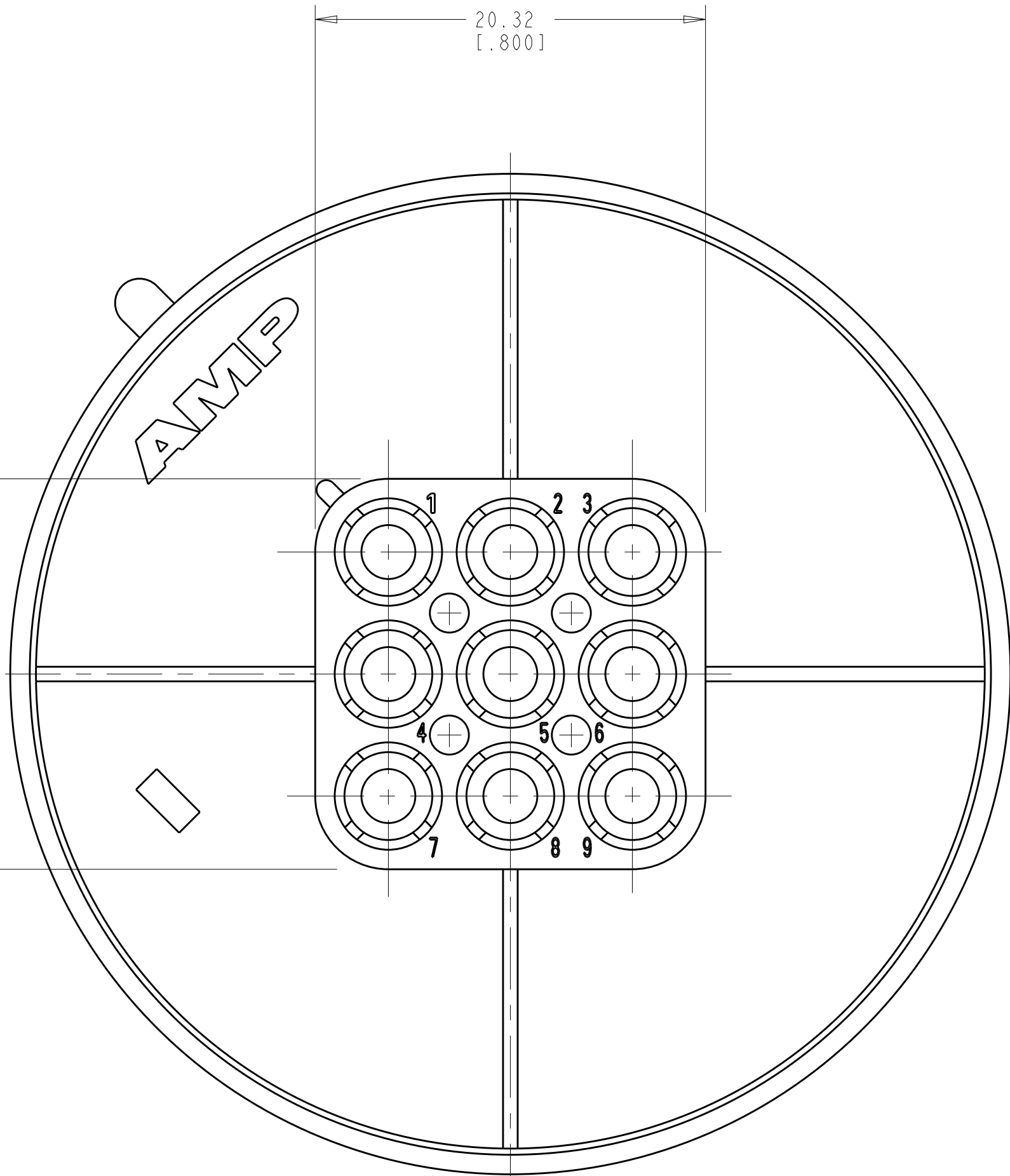


3-DIMENSIONAL MODEL  
SCALE 2:1

REVISIONS					
P.	LTR.	DESCRIPTION	DATE	DWN.	APVD.
	A1	REVISED PER ECR-17-015922	07NOV2017	BDA	KR

1. MATES WITH APPROPRIATE UNIVERSAL MATE-N-LOK™ PLUG.
2. RECOMMENDED PANEL THICKNESS 0.76 - 2.29 [ .030 - .090].
3. PANEL MUST BE PUNCHED SO THAT THE HOUSING ENTERS THE PANEL IN THE SAME DIRECTION AS THE PUNCH.
4. DIMENSIONS SHOWN REPRESENT PRODUCT IN DRY, AS MOLDED, CONDITION. ADDITIONAL 2% GROWTH DUE TO SUBSEQUENT MOISTURE ABSORPTION MAY OCCUR AND SHOULD BE ACCOUNTED FOR.

5 PRELIMINARY - NOT FOR PRODUCTION.



NATURAL	2178934-1
COLOR	PART NUMBER

THIS DRAWING IS A CONTROLLED DOCUMENT.		DWN. 23-JAN-2014	TE Connectivity	
DIMENSIONS: mm[INCHES]		CHK. 23-JAN-2014		
TOLERANCES UNLESS OTHERWISE SPECIFIED:		APVD. 23-JAN-2014	NAME	
0 PLC ±		PRODUCT SPEC	CAP, 9 CIRCUIT, UNIVERSAL MATE-N-LOK(TM), SPECIAL	
1 PLC ±		APPLICATION SPEC		
2 PLC ±0.51 [ .020]		SIZE	CAGE CODE DRAWING NO	
3 PLC ±		WEIGHT	RESTRICTED TO	
4 PLC ±		Customer Drawing	A1 00779 C=2178934	
ANGLES ±0° 30'			SCALE 4:1 SHEET 1 OF 1 REV A1	
FINISH				
MATERIAL NYLON, UL 94V-0, NATURAL				