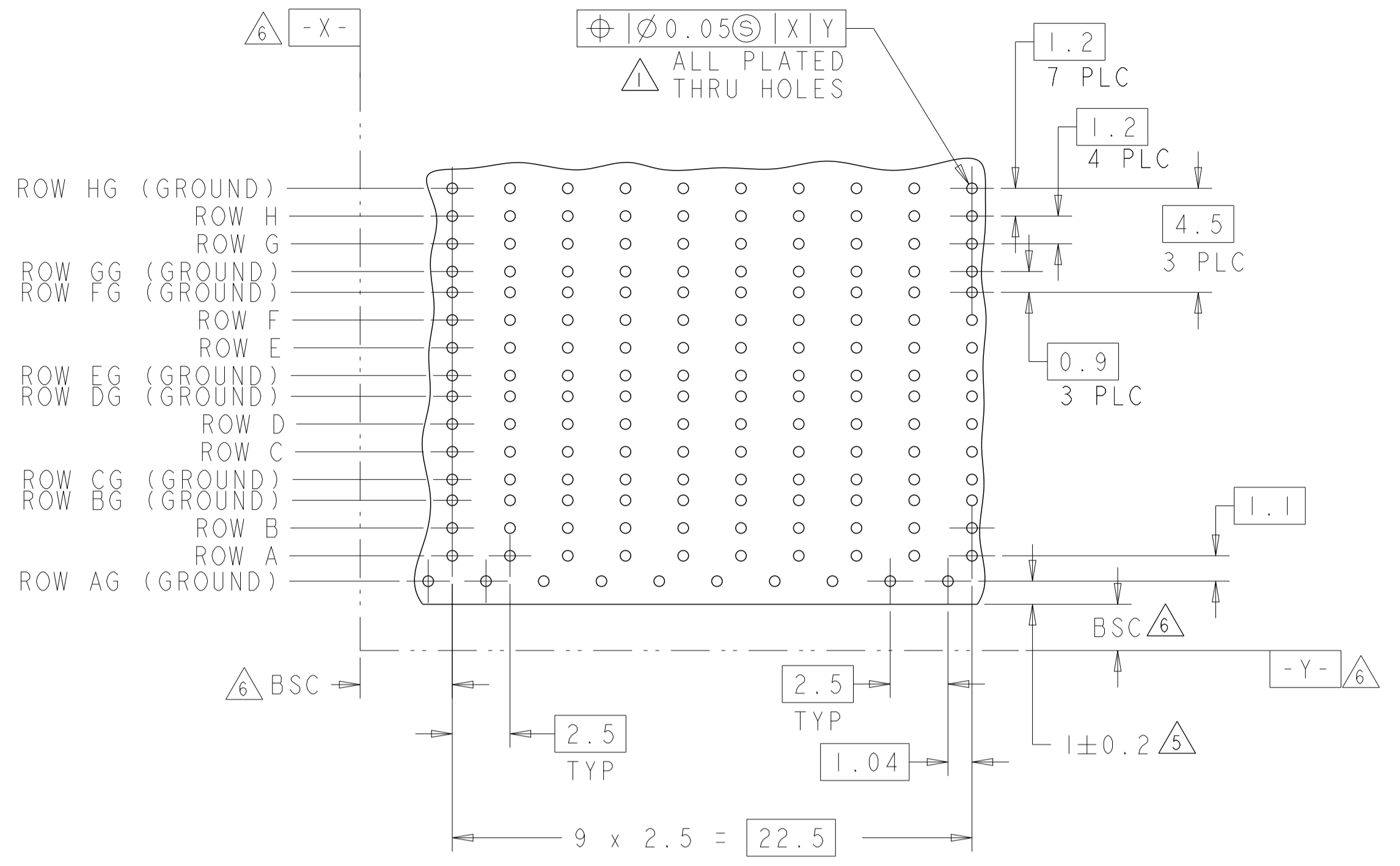
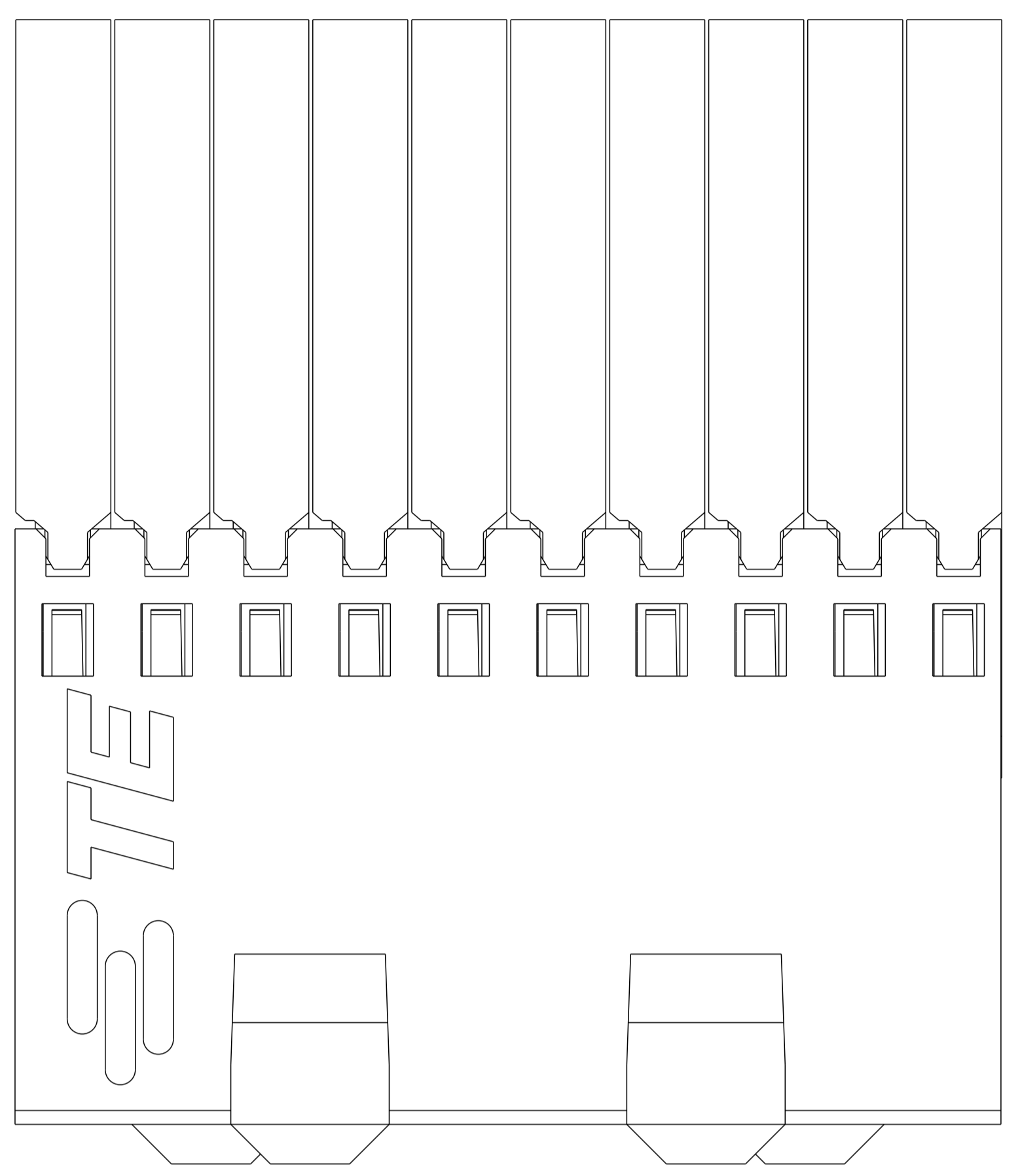
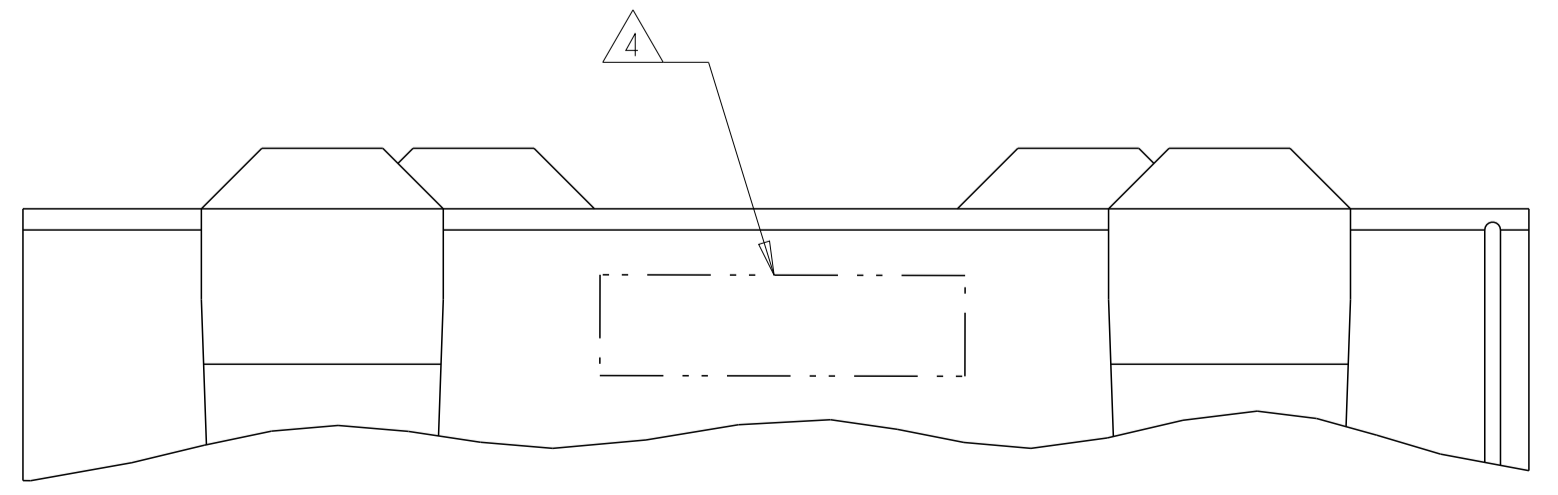
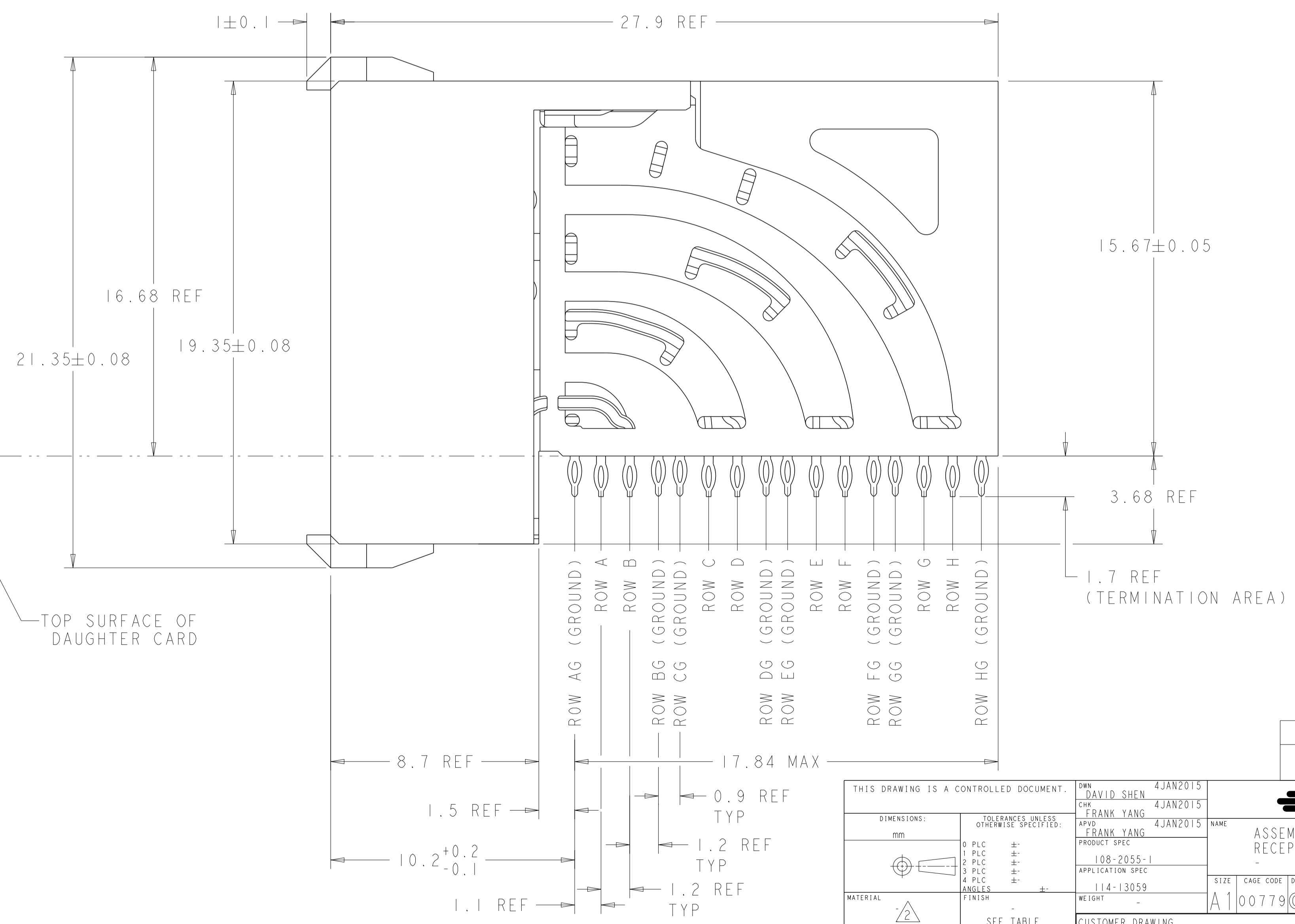
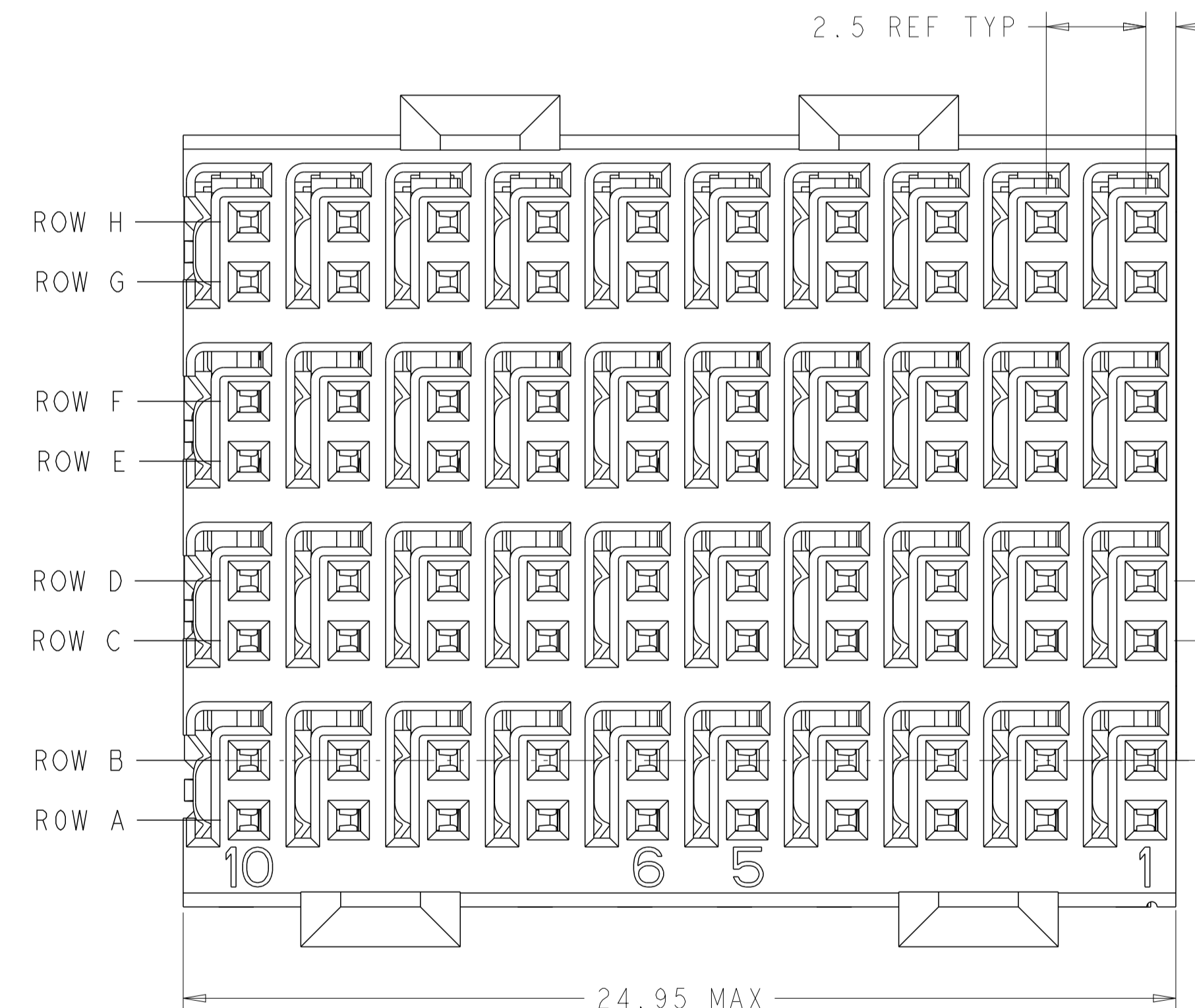


REVISIONS				
P.	LTN.	DESCRIPTION	DATE	APPD.
A		INITIAL RELEASE	19MAR2015	DS FY
B		REVISED PER ECO-16-017623	28MAY2016	DS HL



- 1. REFERENCE APPLICATION SPEC 114-13059 FOR RECOMMENDED PLATED THRU HOLE DIAMETER AND PLATING THICKNESSES.
- 2. MATERIAL:
 SHIELD - PHOSPHOR BRONZE
 CONTACT - COPPER-NICKEL-SILICON
 HOUSING, CHICKLET AND CHICKLET COVER - GLASS FILLED POLYESTER, UL 94V-0 RATED.
- 3. FINISH: CONTACT AND SHIELD
 MATING AREA:
 MEETS THE PERFORMANCE REQUIREMENTS OF TYCO ELECTRONICS PRODUCT SPECIFICATION, 108-2055-1; BASED ON TELCORDIA GR-1217-CORE, APPLICATIONS IN UNCONTROLLED ENVIRONMENTS.
 COMPLIANT PIN AREA:
 0.5µm MIN MATTE TIN OVER BASE PLATING.
- 4. CONNECTOR MARKED WITH PART NUMBER AND DATE CODE IN APPROXIMATE AREA SHOWN.
- 5. DIMENSION APPLIES TO CENTERLINE OF THRU HOLE.
- 6. DATUMS AND BASIC DIMENSIONS ESTABLISHED BY CUSTOMER.
- 7. CONTACT AREA LUBRICATED WITH BELLCORE APPROVED LUBRICANT. TECHNICAL REFERENCE: GR-1217-CORE, ISSUE 1, NOVEMBER 1995.

RECOMMENDED PC BOARD LAYOUT,
 DAUGHTER BOARD,
 COMPONENT SIDE SHOWN
 SCALE 5:1



3	2170903-1
FINISH	PART NUMBER

THIS DRAWING IS A CONTROLLED DOCUMENT.		OWN: DAVID SHEN 4JAN2015	NAME: ASSEMBLY, Z-Pack HM-eZd + RECEPTACLE, 4 PAIR, 10COLUMN
DIMENSIONS: mm		CHK: FRANK YANG 4JAN2015	
TOLERANCES UNLESS OTHERWISE SPECIFIED:		APPD: FRANK YANG 4JAN2015	PRODUCT SPEC: 108-2055-1
0 PLC ±		APPLICATION SPEC: 114-13059	SIZE: A1
1 PLC ±		WEIGHT: -	CAGE CODE: -
2 PLC ±		RESTRICTED TO: -	DRAWING NO: 2170903
3 PLC ±		CUSTOMER DRAWING	SCALE: 8:1
4 PLC ±			SHEET: 1 OF 1
ANGLES ±			REV: B
FINISH: SEE TABLE			