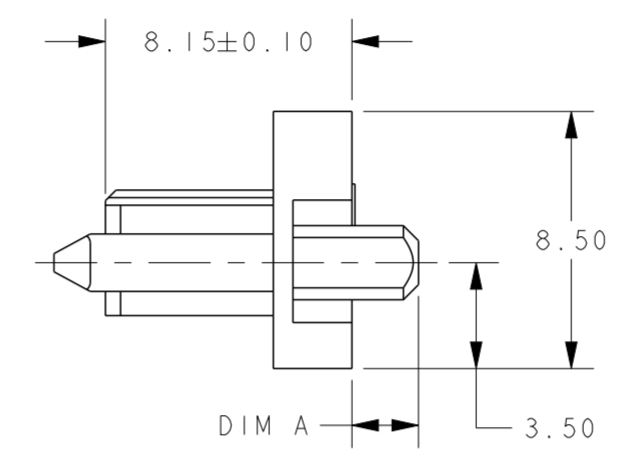
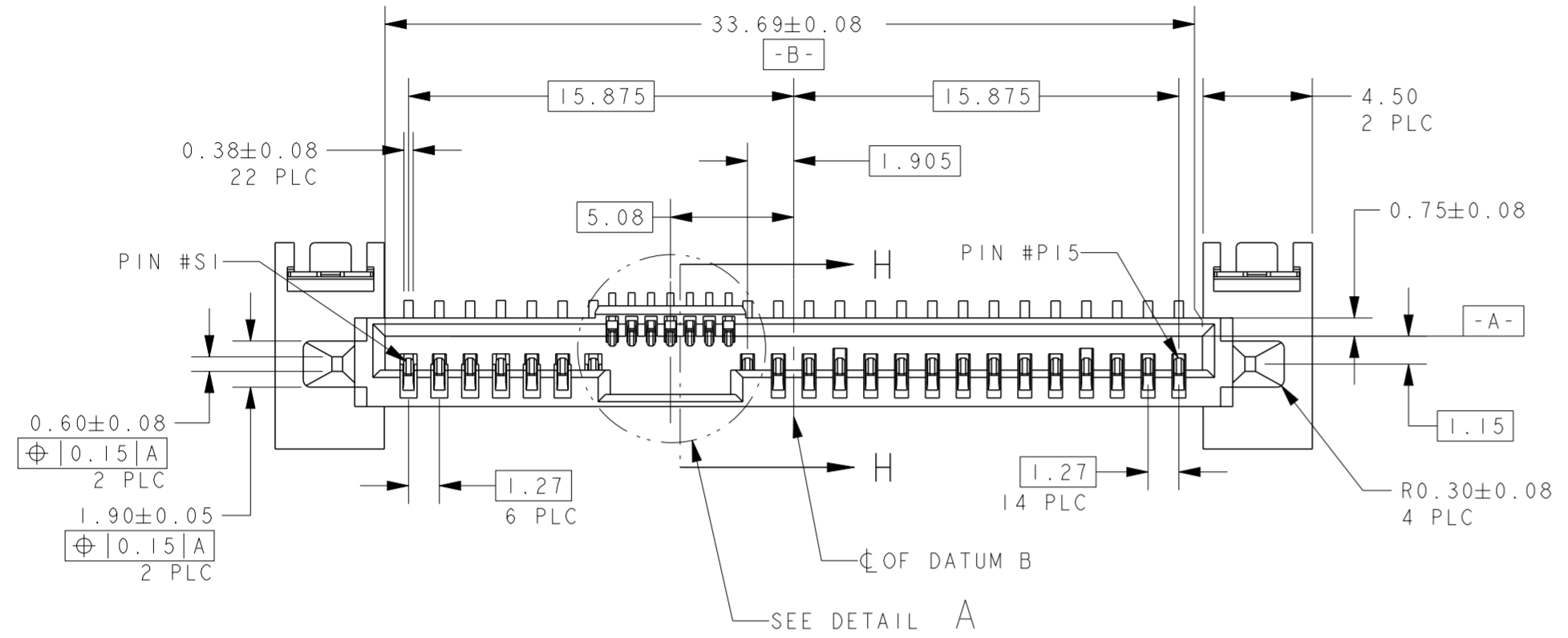


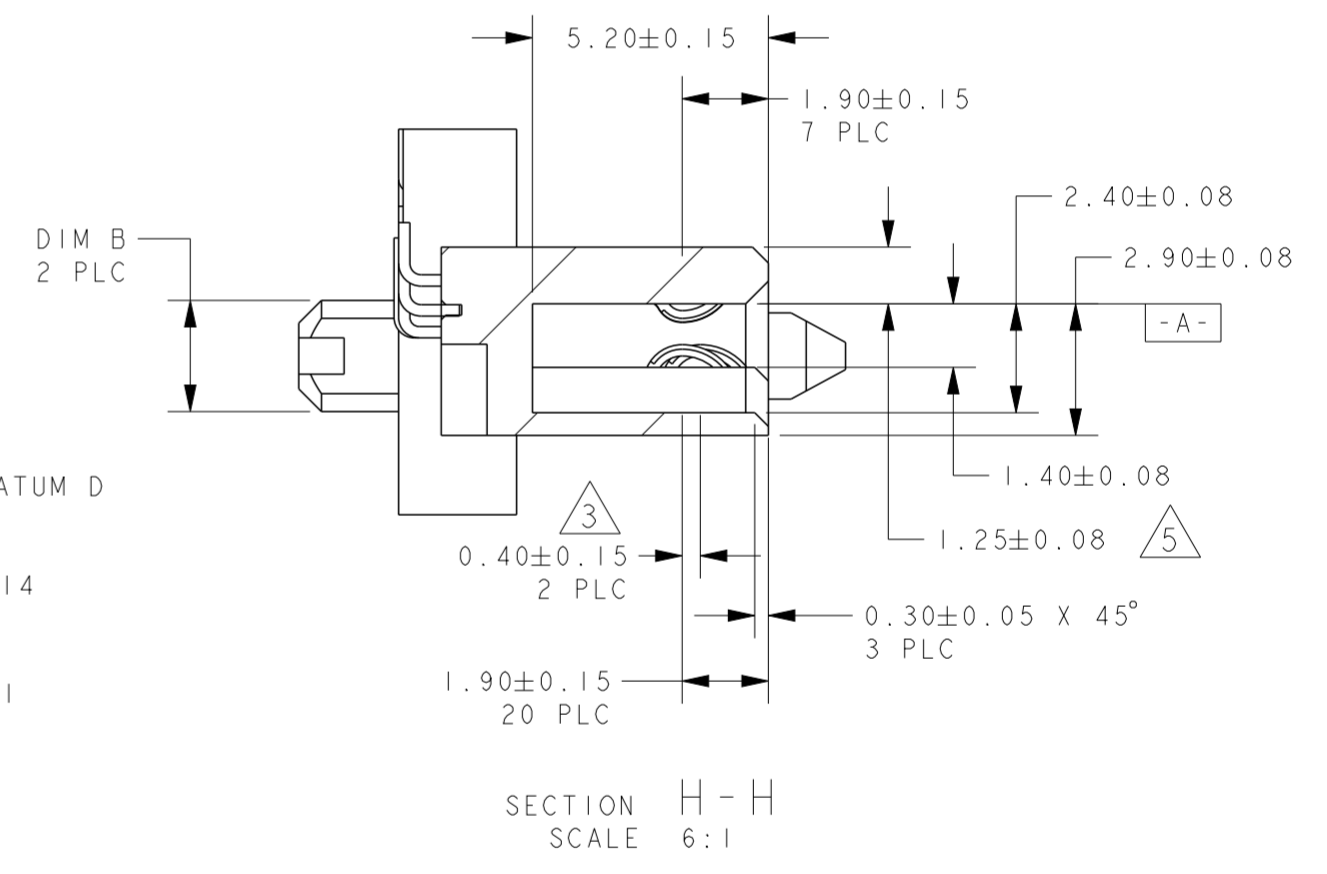
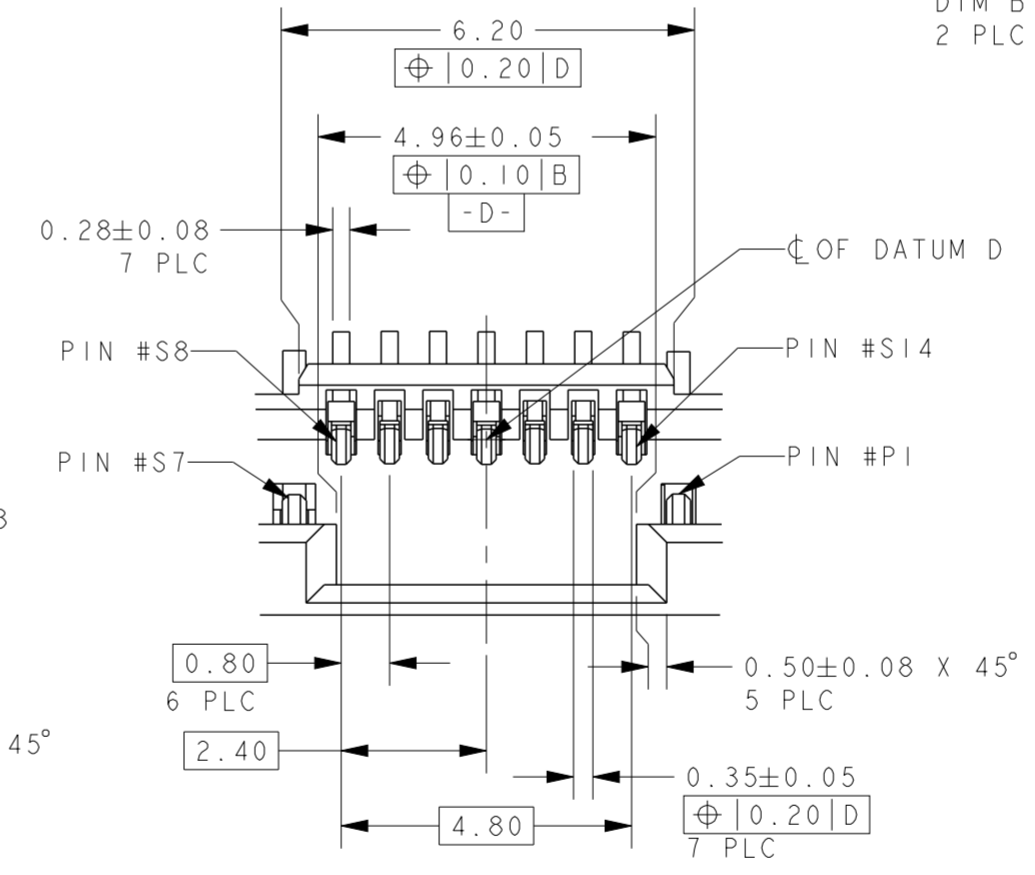
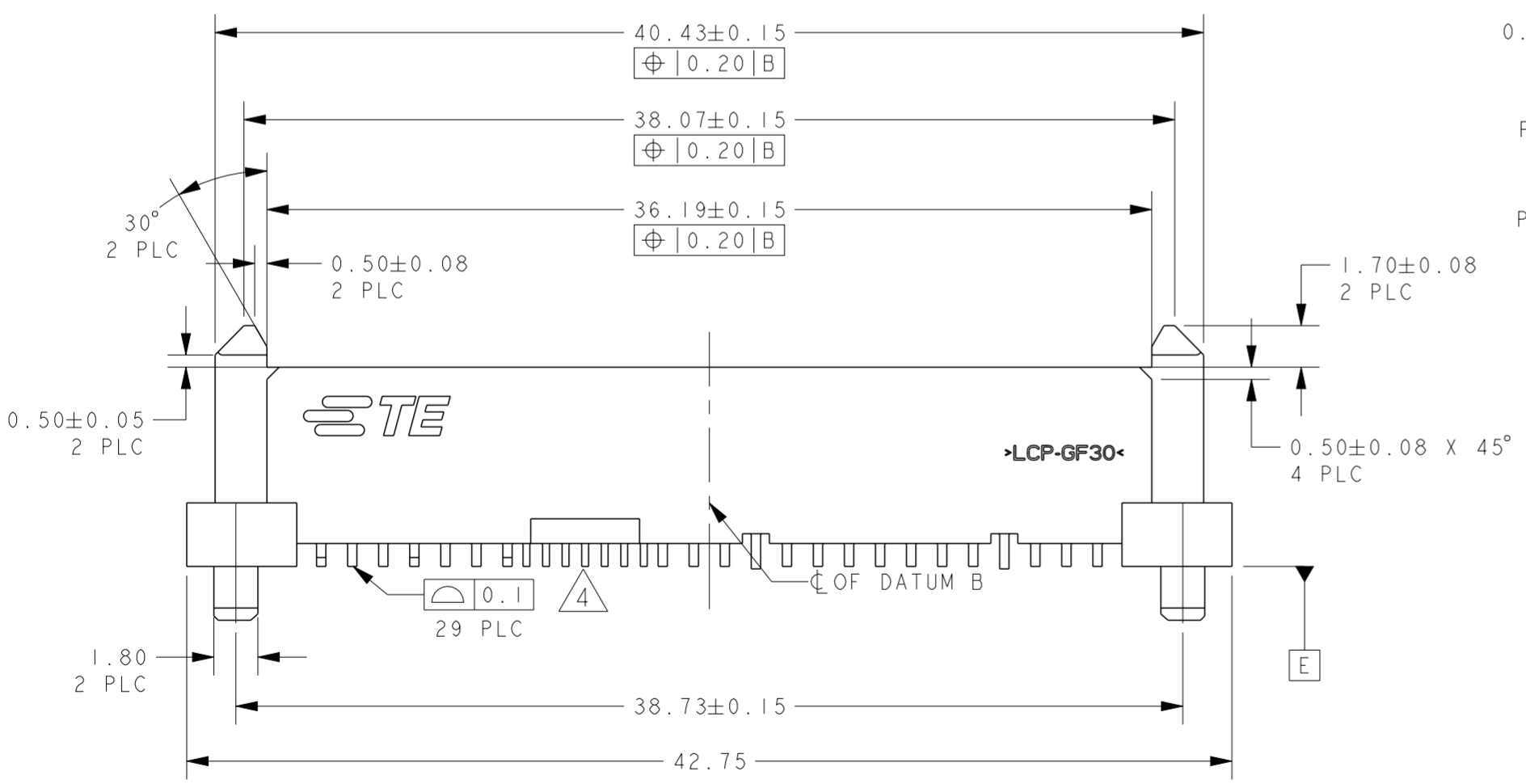
THIS DRAWING IS UNPUBLISHED. RELEASED FOR PUBLICATION 20  
 © COPYRIGHT 2012 ALL RIGHTS RESERVED.

LOC	DIST	REVISIONS					
		P	LTR	DESCRIPTION	DATE	DWN	APVD
J	-	A		RELEASED FOR PRODUCTION	07MAR2016	TX	SH
		AI		REVISED AS PER ECN-24-284280	13SEP2024	NR	ZW



NOTES:

- 1 MATERIAL:  
HOUSING: HIGH TEMP THERMOPLASTIC, UL94V-0,  
COLOR: BLACK  
CONTACT: COPPER ALLOY  
BOARDLOCK: COPPER ALLOY
- 2 FINISH:  
CONTACT AREA: MIN 0.76um GOLD PLATING  
SOLDERTAIL: MIN 2.54um MATTE TIN PLATING  
UNDERPLATE: MIN 1.27um NICKEL PLATING
- 3 PIN PIN #P4 AND PIN #P12 ONLY
- 4 SOLDERTAIL TO BE WITHIN 0.05MAX ABOVE AND 0.10MAX BELOW DATUM E
- 5 1.33 MAX MEASURED AT DATUM X
- 6 PACKAGING: TAPE AND REEL



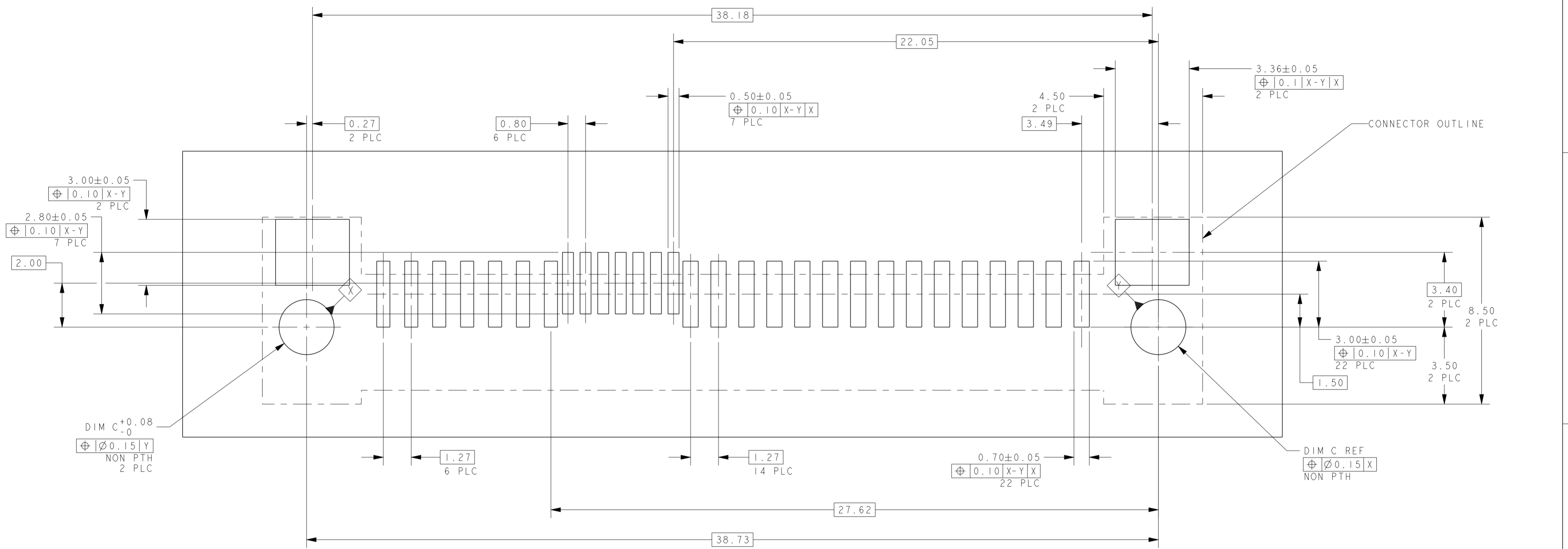
DETAIL A  
SCALE 8:1

OBsolete	Ø1.40	Ø1.26	1.00	WITH PICK UP CAP	2170563-3
	Ø2.50	Ø2.45	2.20	WITHOUT PICK-UP CAP	2170563-2
OBsolete	Ø2.50	Ø2.45	2.20	WITH PICK UP CAP	2170563-1
	DIM C	DIM B	DIM A	DESCRIPTION	PART NUMBER

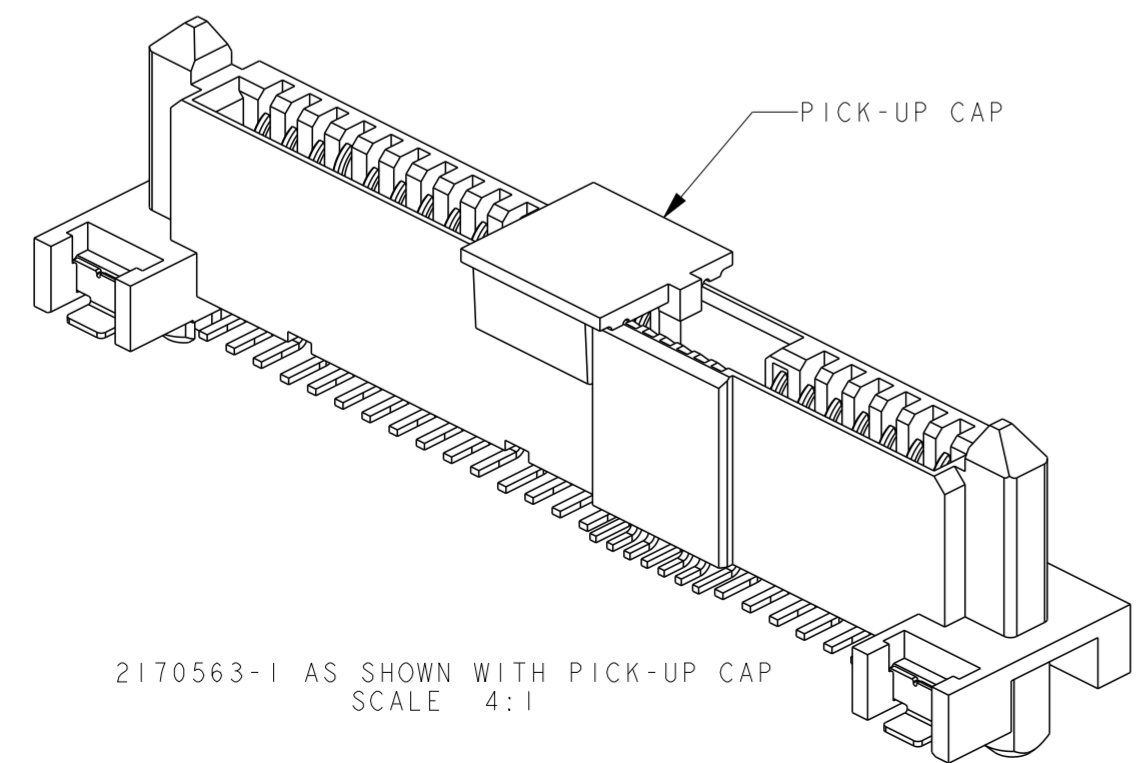
THIS DRAWING IS A CONTROLLED DOCUMENT.		DWN	TIM XUE	26 JUL 2013	 TE Connectivity
DIMENSIONS:		CHK	ALEX CAI	26 JUL 2013	
mm		APVD	ALEX CAI	26 JUL 2013	
TOLERANCES UNLESS OTHERWISE SPECIFIED:		NAME			
0 PLC ±		PRODUCT SPEC		108-51109	126 SAS RECEPTACLE DUALLINK, WITH BOARDLOCK 1-SIDED, 15P+7P+7P
1 PLC ±0.20		APPLICATION SPEC		114-60017	
2 PLC ±0.20		WEIGHT		A20779	SCALE 2:1 SHEET 1 OF 2 REV A1
3 PLC ±0.20		CUSTOMER DRAWING			
4 PLC ±		SCALE		2:1	
ANGLES ±3°		SHEET		1 OF 2	
FINISH		REV		A1	

THIS DRAWING IS UNPUBLISHED. RELEASED FOR PUBLICATION 20  
 © COPYRIGHT 2012 ALL RIGHTS RESERVED.

LOC	DIST	REVISIONS			
P	LTR	DESCRIPTION	DATE	DWN	APVD



RECOMMENDED RECEPTACLE BOARD LAYOUT  
 SCALE 8:1



THIS DRAWING IS A CONTROLLED DOCUMENT.		DWN TIM XUE 26 JUL 2013	TE Connectivity															
DIMENSIONS: mm		CHK ALEX CAI 26 JUL 2013																
TOLERANCES UNLESS OTHERWISE SPECIFIED:		APVD ALEX CAI 26 JUL 2013	NAME 12G SAS RECEPTACLE DUALINK, WITH BOARDLOCK 1-SIDED, 15P+7P+7P															
<table border="1"> <tr><td>0 PLC</td><td>±</td></tr> <tr><td>1 PLC</td><td>±0.20</td></tr> <tr><td>2 PLC</td><td>±0.20</td></tr> <tr><td>3 PLC</td><td>±0.20</td></tr> <tr><td>4 PLC</td><td>±</td></tr> <tr><td>ANGLES</td><td>±3°</td></tr> <tr><td>FINISH</td><td></td></tr> </table>		0 PLC	±	1 PLC	±0.20	2 PLC	±0.20	3 PLC	±0.20	4 PLC	±	ANGLES	±3°	FINISH		PRODUCT SPEC 108-51109	SIZE A2	
0 PLC	±																	
1 PLC	±0.20																	
2 PLC	±0.20																	
3 PLC	±0.20																	
4 PLC	±																	
ANGLES	±3°																	
FINISH																		
MATERIAL		APPLICATION SPEC 114-60017	CAGE CODE A20779	DRAWING NO C-2170563														
		WEIGHT	RESTRICTED TO -															
		CUSTOMER DRAWING		SCALE 2:1 SHEET 2 OF 2 REV A1														