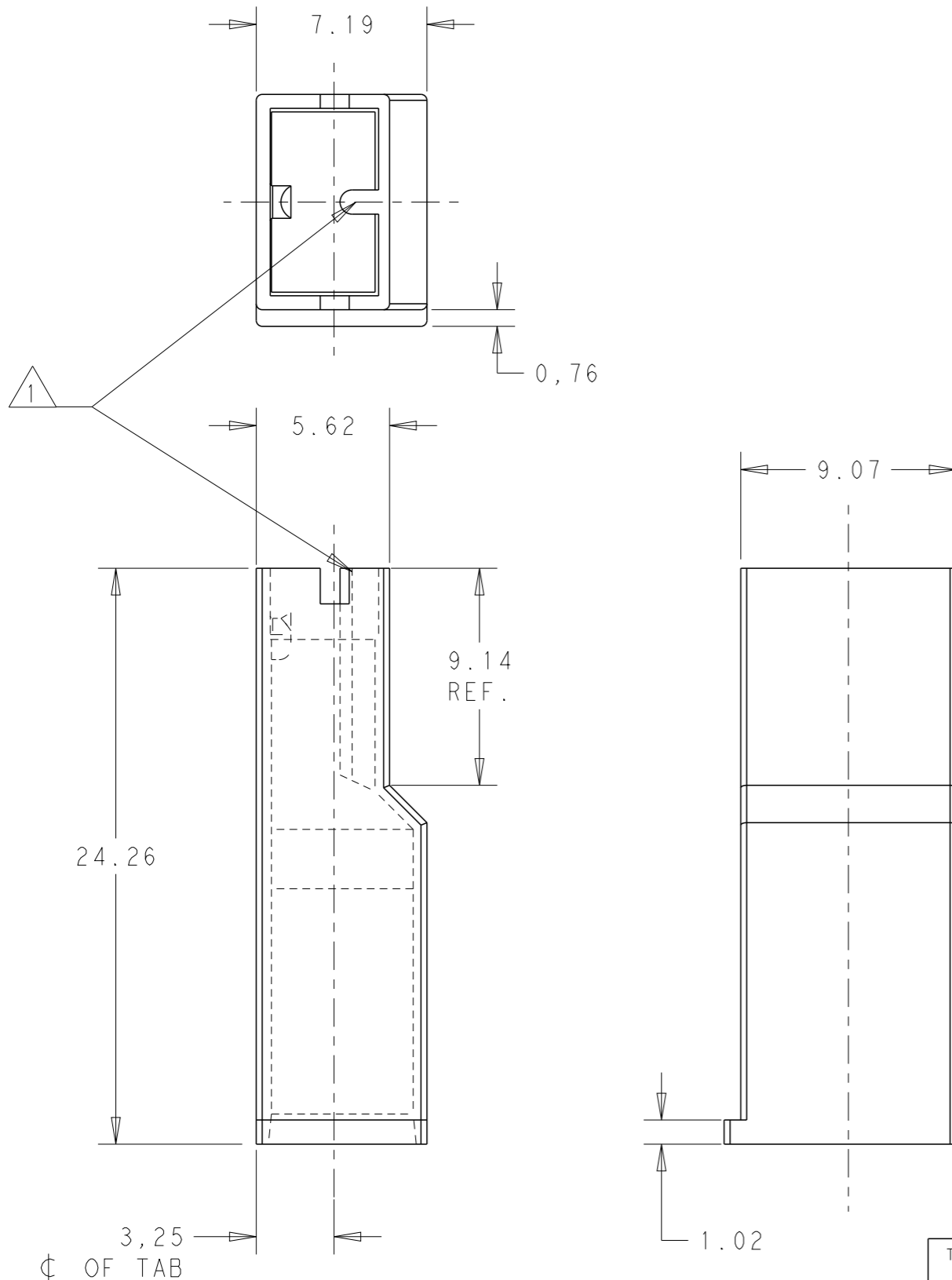


THIS DRAWING IS UNPUBLISHED. RELEASED FOR PUBLICATION 20  
 © COPYRIGHT 20 TE CONNECTIVITY ALL RIGHTS RESERVED.

LOC	DIST	REVISIONS			
P	LTR	DESCRIPTION	DATE	DWN	APVD
	C	REVISED PER ECN 23-193366	10JAN2023	WLS	BHC
	C1	REVISED PER ECN-24-266312	15MAY2024	WLS	JS



- ① RIB MAY EXTEND TO FRONT OF HOUSING.
- ② MATERIAL: PA 66 ACC. TO SPEC. IEC 60335 GWT 850°C - WITHOUT FLAME.
- ③ HEAT STABILIZED

BLACK	PA 6.6 - HB ③	1-2133341-3
NATURAL	PA 6.6 - UL94 - V0 - GWT ②	1-2133341-2
NATURAL	PA 6.6 - UL94 - V0	1-2133341-1
BLUE	PA 6.6 - UL94 - V2	2133341-6
GREEN		2133341-5
YELLOW		2133341-4
RED		2133341-3
NATURAL		2133341-2
BLACK		2133341-1
COLOR		MATERIAL

THIS DRAWING IS A CONTROLLED DOCUMENT.		DWN H.C. CANTER 25MAY2011	<b>STE</b> TE Connectivity	
		CHK W.L. STEFANI 25MAY2011		
DIMENSIONS: mm		APVD -	NAME MKI .250 POSITIVE LOCK RECEPTACLE INSULATOR MKI .250 POSITIVE LOCK	
TOLERANCES UNLESS OTHERWISE SPECIFIED: 0 PLC ±- 1 PLC ±0,5 2 PLC ±0,5 3 PLC ±- 4 PLC ±- ANGLES ±- FINISH -		PRODUCT SPEC 108-3252	RESTRICTED TO -	
MATERIAL SEE TABLE		APPLICATION SPEC 114-2153	SIZE A3	CAGE CODE 00779
		WEIGHT -	DRAWING NO C-2133341	REV C1
CUSTOMER DRAWING			SCALE 4:1	SHEET 1 OF 1