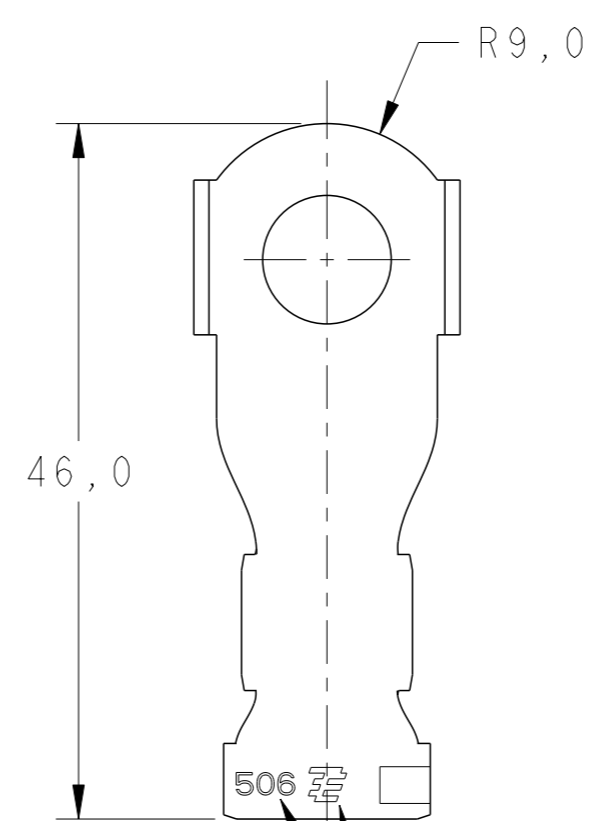
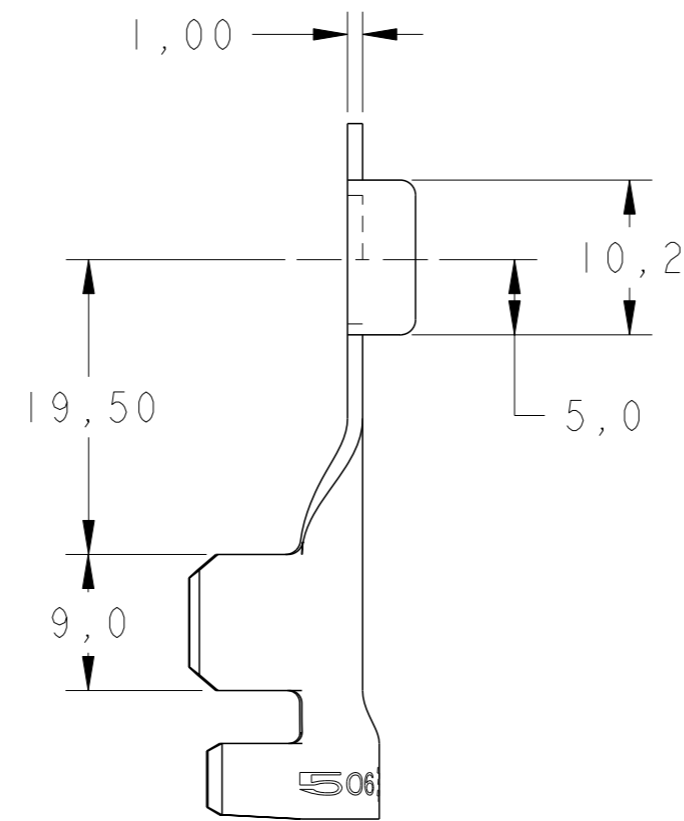
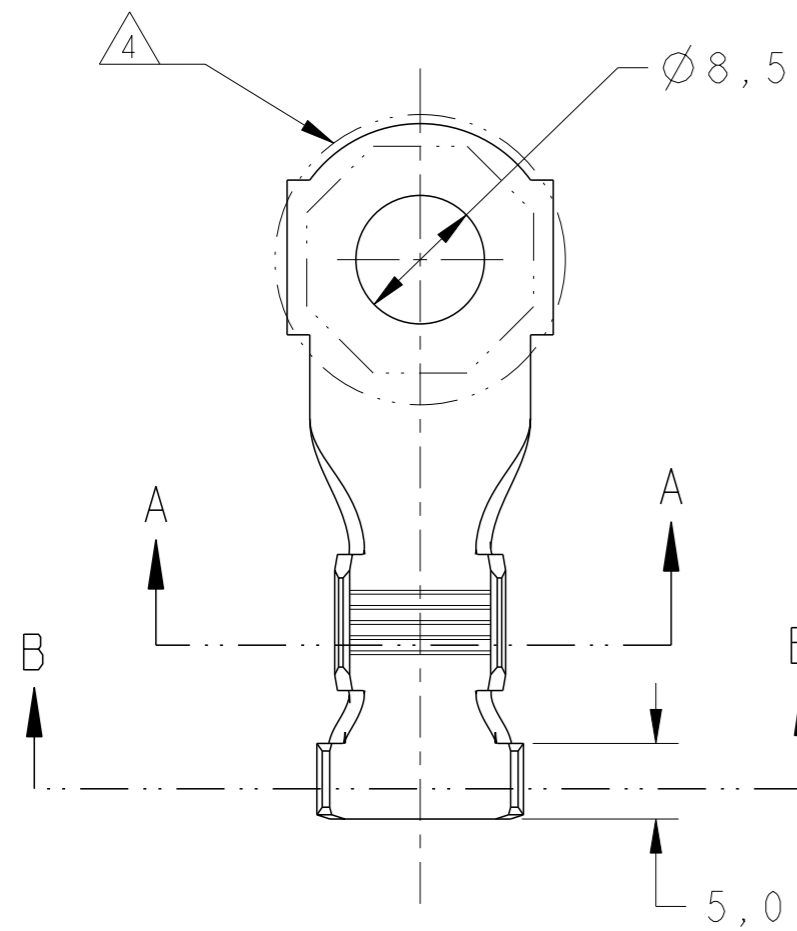


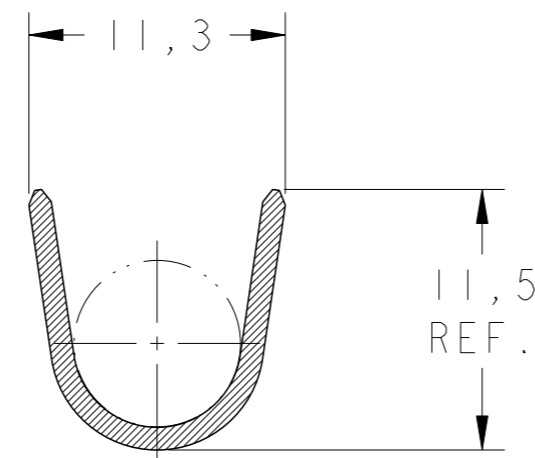
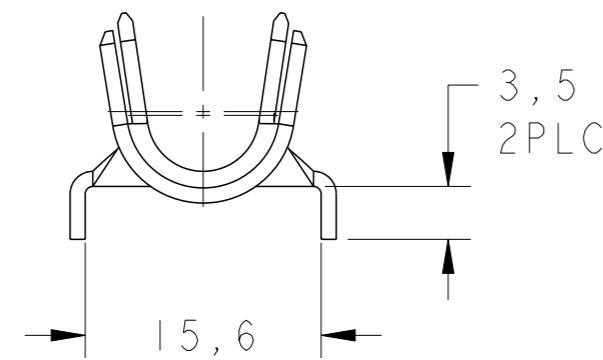
THIS DRAWING IS UNPUBLISHED. RELEASED FOR PUBLICATION 20  
 © COPYRIGHT 20 ALL RIGHTS RESERVED.

REVISIONS							
LOC	DIST	P	LTR	DESCRIPTION	DATE	DWN	APVD
AP	-	A		STATUS CHANGED BY ECO-11-019306	26SEP2011	PP	MLO
		AI		ADDED DASH 2 ECO-13-000376	11JAN2013	NCL	DAO

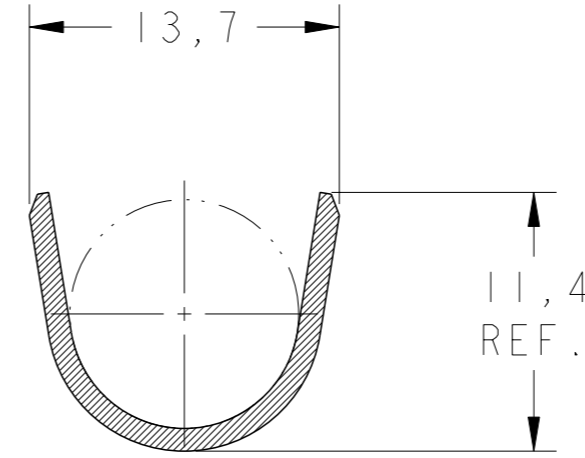


- GRAVAÇÃO DE LOGOTIPO TE EM BAIXO RELEVO.  
 - TE LOGO MARKING IN LOW RELIEF.

- GRAVAÇÃO DE CÓDIGO DE PAÍS PRODUTOR EM BAIXO RELEVO.  
 - MANUFACTURER COUNTRY CODE MARKING IN LOW RELIEF.

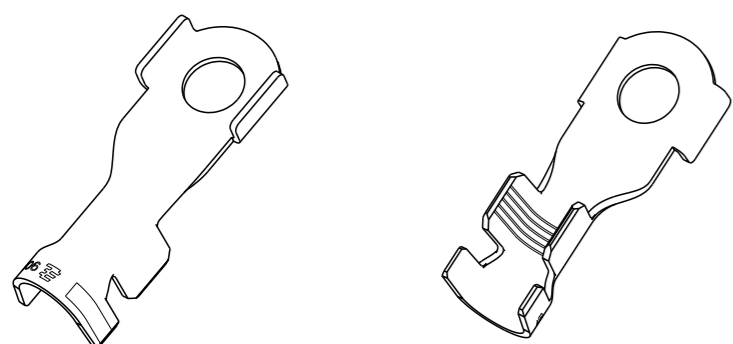


SECTION A-A  
SCALE 3:1



SECTION B-B  
SCALE 3:1

- 1 - É REQUERIDA A PRÉVIA APROVAÇÃO PELA ENGENHARIA DE PRODUTO TE PARA AUTORIZAÇÃO DE FORNECIMENTO DA PEÇA.  
 - TE PRODUCT ENGINEERING APPROVAL IS REQUIRED PRIOR TO AUTHORIZATION OF SUPPLY.
- 2 - MATERIAL: BRONZE, CONFORME ESPECIFICAÇÃO TE 100-221 (TEMPERA 2).  
 - MATERIAL: BRONZE, ACCORDING SPECIFICATION TE 100-221 (TEMPER 2).
- 3 - ACABAMENTO: ESTANHADO, ESPESSURA DE CAMADA DE 2,5µm MIN, CONFORME ESPECIFICAÇÃO TE 112-16-3.  
 - FINISH: TIN PLATED, LAYER THICKNESS OF 2,5µm MIN, ACCORDING SPECIFICATION TE 112-16-3.
- 4 - SOQUETE PARA PARAFUSAMENTO PORCA M8 (Ø EXTERNO 19,2mm TYP); APENAS PARA ILUSTRAÇÃO DO ESPAÇO DISPONÍVEL.  
 - M8 NUT SCREWING SOCKET (EXTERNAL DIAMETER 19,2mm TYP); ONLY TO SHOW AVAILABLE SPACE ILLUSTRATION.



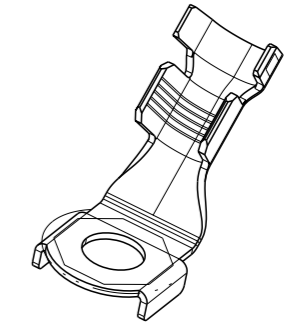
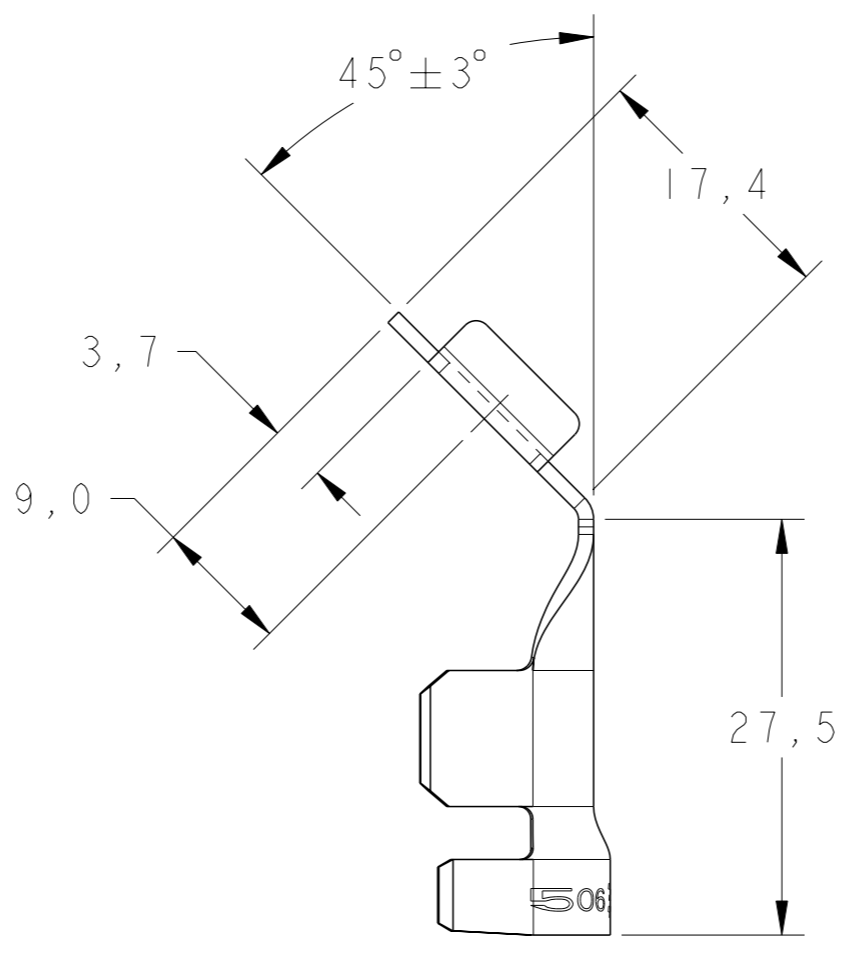
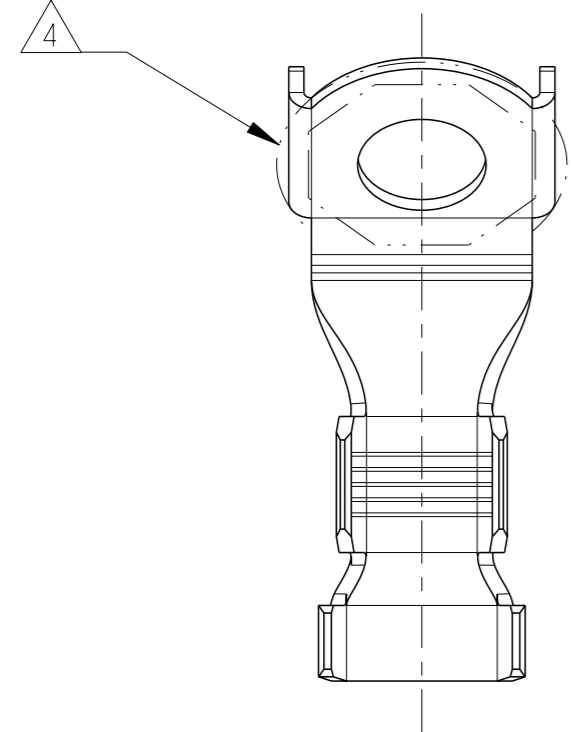
PERSPECTIVE VIEWS  
SCALE 1:1



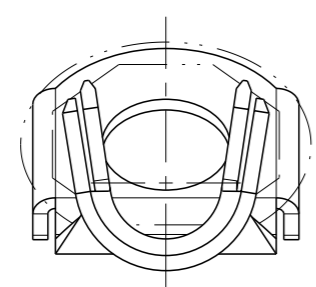
WIRE RANGE	INSUL. RANGE	LOOSE PIECE	3	2	2133217-2
		LOOSE PIECE	3	2	2133217-1
16 - 25mm <sup>2</sup>	Ø 6,4 - 9,2mm	SUPPLIED	FINISH	MATERIAL	PART NUMBER
THIS DRAWING IS A CONTROLLED DOCUMENT.		DWN 07 JAN 2011 PPULGROSSI	TE Connectivity <b>TERMINAL RING TONGUE M8</b>		
DIMENSIONS: mm		CHK 07 JAN 2011 JRGOLDSCHIMDT			
TOLERANCES UNLESS OTHERWISE SPECIFIED:		APVD 07 JAN 2011 MLOGAWA			
0 PLC ±		PRODUCT SPEC			
1 PLC ±0,4		APPLICATION SPEC	SIZE	CAGE CODE	DRAWING NO
2 PLC ±0,3			A2	00779	C-2133217
3 PLC ±			WEIGHT	7.5018 g	RESTRICTED TO
4 PLC ±			CUSTOMER DRAWING	SCALE 2:1	SHEET 1 OF 2
ANGLES ±30'					REV A1
FINISH					
SEE TABLE					

THIS DRAWING IS UNPUBLISHED. RELEASED FOR PUBLICATION 20  
 © COPYRIGHT 20 BY - ALL RIGHTS RESERVED.

LOC	DIST	REVISIONS			
P	LTR	DESCRIPTION	DATE	DWN	APVD
AP	-	SEE SHEET 1	-	-	-



PERSPECTIVE VIEW  
SCALE 1:1



**2133217-2**

DEMAIS DIMENSÕES VER FOLHA 1 DE 1  
OTHERS DIMENSIONS SEE SHEET 1 OF 1

THIS DRAWING IS A CONTROLLED DOCUMENT.		DWN NCLAPRESA 11 JAN 2013	TE Connectivity	
DIMENSIONS: mm		CHK JRGOLDSCHMIDT 11 JAN 2013		
TOLERANCES UNLESS OTHERWISE SPECIFIED:		APVD DAOLIVEIRA 11 JAN 2013	NAME - TERMINAL RING TONGUE	
0 PLC ± 1 PLC ±0,4 2 PLC ±0,3 3 PLC ± 4 PLC ± ANGLES ±30' FINISH		PRODUCT SPEC -	SIZE A200779	DRAWING NO C-2133217
MATERIAL SEE TABLE		APPLICATION SPEC -	RESTRICTED TO -	SCALE 2:1
SEE TABLE		WEIGHT -	SHEET 2	OF 2
		CUSTOMER DRAWING	REV A1	