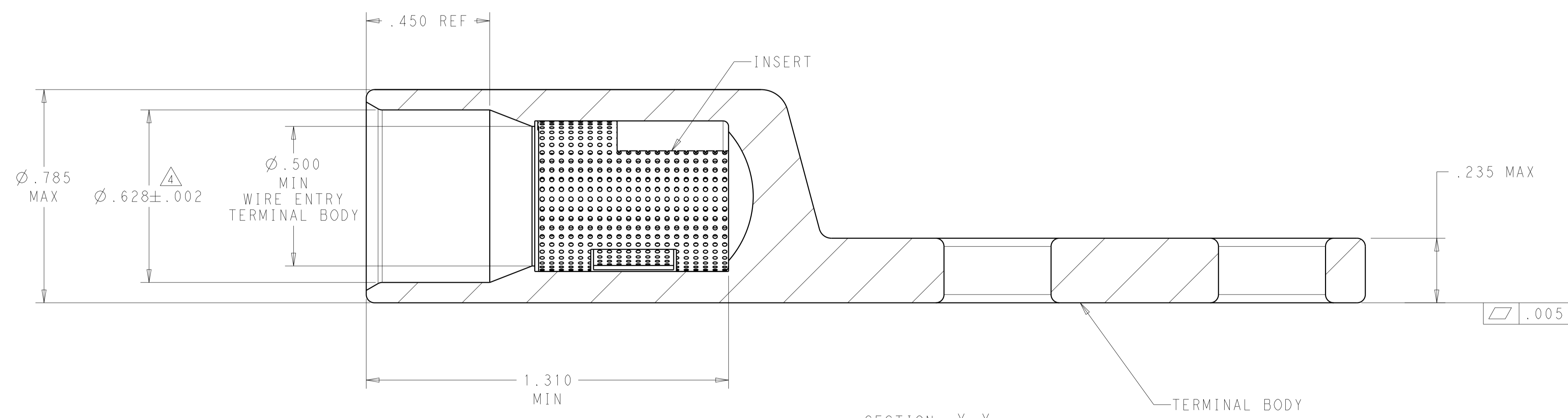
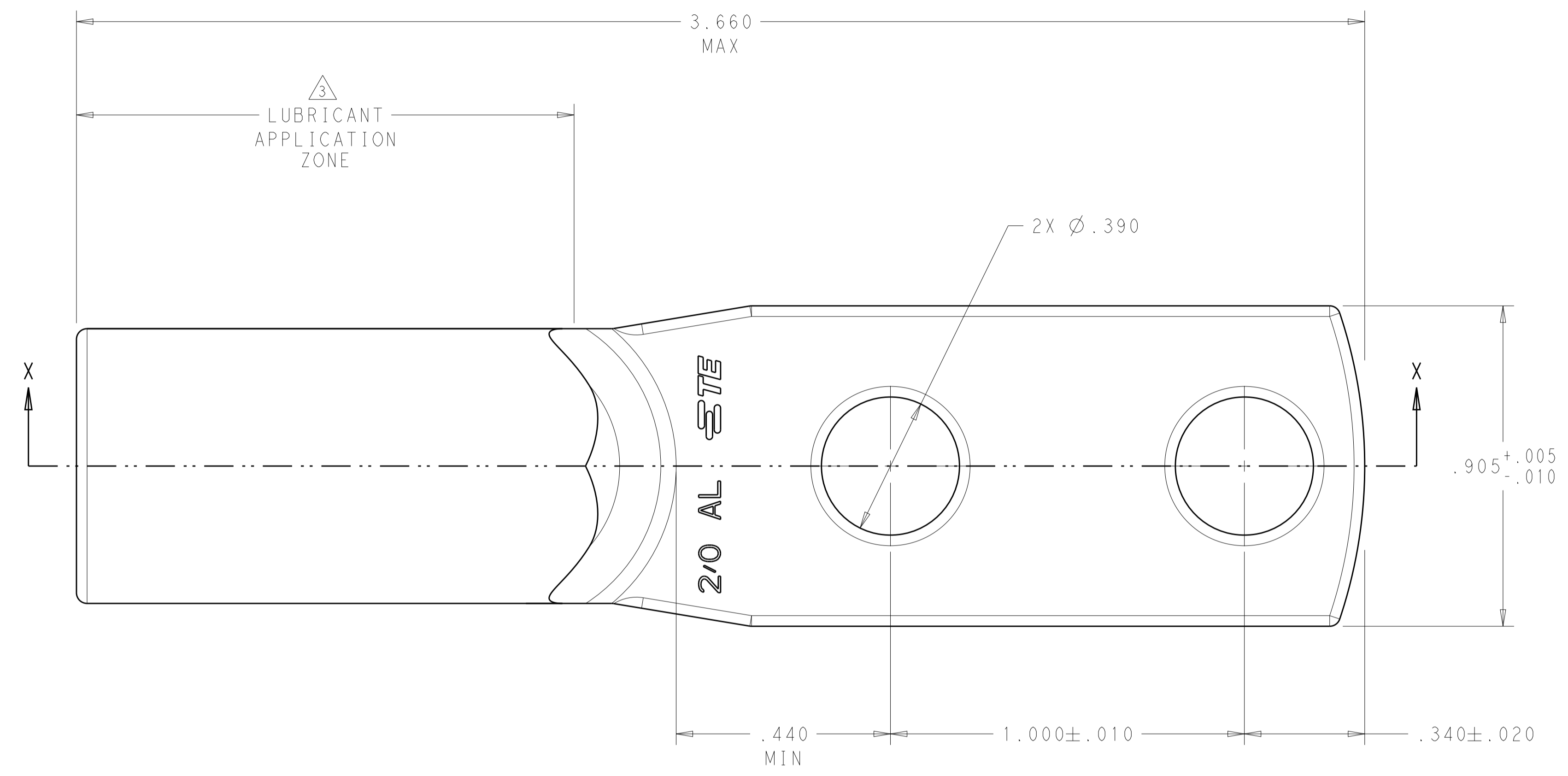
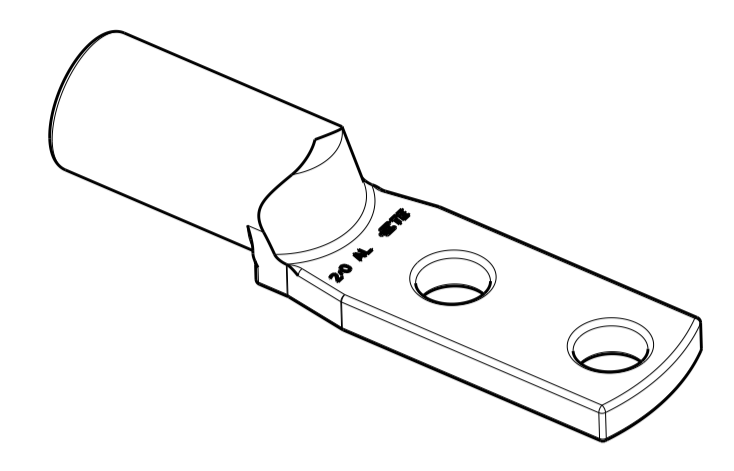


LOC		DIST		REVISIONS			
P	LTN	DESCRIPTION	DATE	DMN	APVD		
D		REV PER ECO 19-018307	3-6-20	CT	PD		

- MATERIAL:
 BODY: ALUMINUM PER ASTM B317
 INSERT: BRASS PER ASTM B36
- FINISH:
 BODY: .000600 MIN MATTE TIN PER ASTM B545
 OVER .000060 MIN NICKEL PER ASTM B733.
 INSERT: .000150 MIN MATTE NICKEL PER QQ-N-290
- PTFE DRY LUBRICANT 360 DEGREE ON OUTER DIAMETER OF CRIMP BARREL IN ZONE SHOWN.
- WIRE INSULATION RANGE: .490-.574.
- SEE TE CONNECTIVITY APPLICATION SPEC. 114-32098 FOR APPLICATION REQUIREMENTS.
- SEE TE CONNECTIVITY INSTRUCTION SHEET 408-32087 FOR TOOLING AND CRIMP INSTRUCTIONS, FIGURE 3 FOR WIRE STRIPPING DETAIL.



2102581-1
 PART NO.

THIS DRAWING IS A CONTROLLED DOCUMENT.		DMN: Brent D. Tolm 07APR2014	TE Connectivity NAME: TERMINAL ASSEMBLY ALUMINUM, STRAIGHT, DUAL HOLE SIZE 2/0
DIMENSIONS: IN		CHK: K. A. DeBock 07APR2014	
TOLERANCES UNLESS OTHERWISE SPECIFIED:		APVD: K. A. DeBock 07APR2014	PRODUCT SPEC:
0 PLC ±.1 1 PLC ±.01 2 PLC ±.005 3 PLC ±.005 4 PLC ±.0005 ANGLES ±.1		APPLICATION SPEC:	SIZE: CAGE CODE: DRAWING NO: RESTRICTED TO:
MATERIAL: SEE CALL-OUT		FINISH: SEE CALL-OUT	WEIGHT: 36.03GRAMS
			Customer Drawing