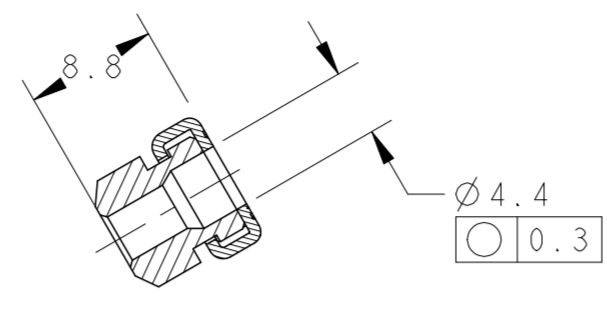
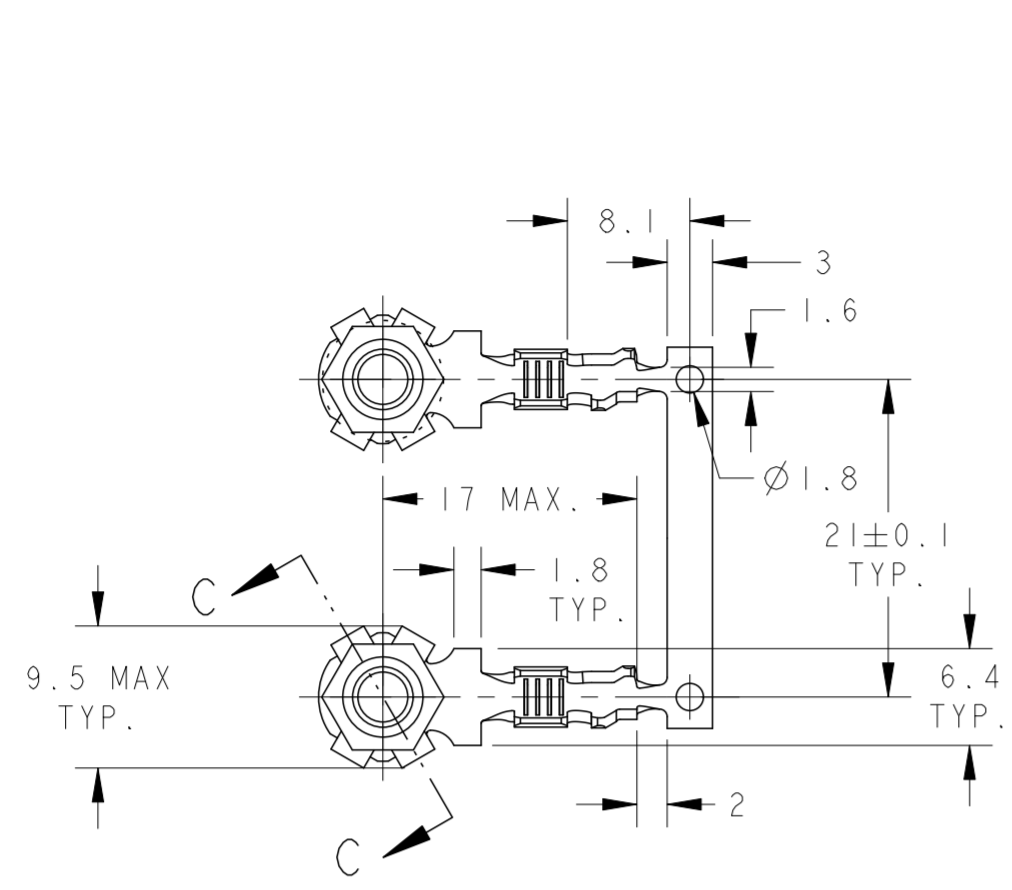
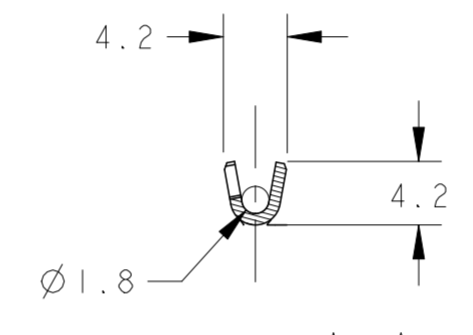
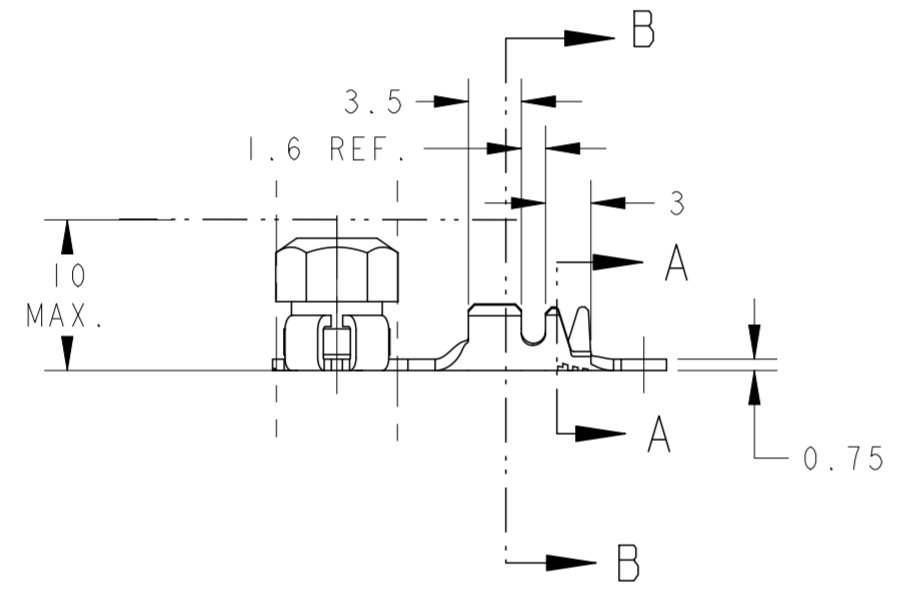


THIS DRAWING IS UNPUBLISHED. RELEASED FOR PUBLICATION  
 © COPYRIGHT - BY - ALL RIGHTS RESERVED.

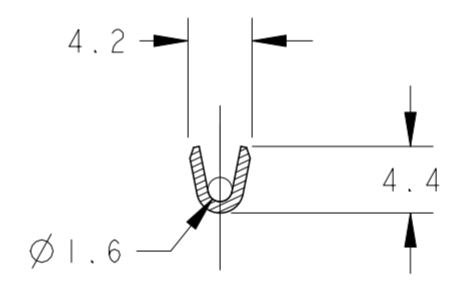
LOC	DIST	REVISIONS					
ES	00	P	LTR	DESCRIPTION	DATE	DWN	APVD
		C		ECO-10-017308	07SEP10	GL	KO
		D		ECO-10-023243	06JAN11	CZ	KO
		D1		ECO-13-009543 ADD P/N	28JUN13	CZ	WY
		D2		ECO-15-012967	09SEP15	JS	WY



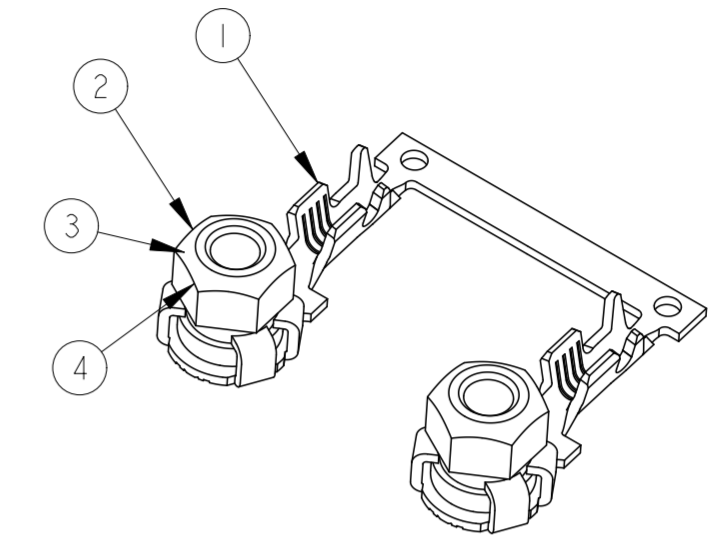
SECTION C-C



SECTION A-A



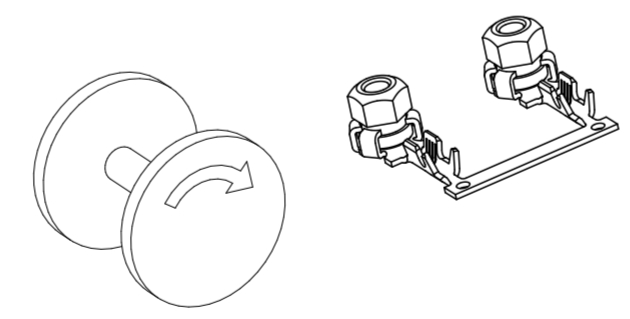
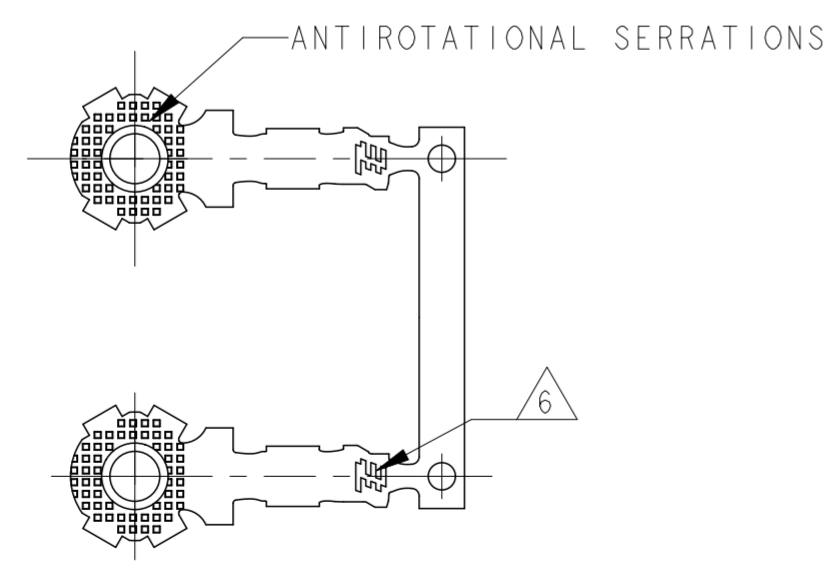
SECTION B-B



SCALE 2:1

NOTES:

1. WIRE BARREL FOR "F" CRIMP AND ISULATION FOR "O" CRIMP.
2. CRIMP WIDTH: WIRE BARREL FOR .130Inches (3.3mm) "F" INSULATION BARREL FOR .130Inches (3.3mm) "O".  
 CRIMP HEIGHT: 1.0mm<sup>2</sup> --- 2.24±0.05mm.  
 0.75mm<sup>2</sup> --- 2.18±0.05mm.
3. QUANTITY: 1000PCS PER REEL.
4. SW7X M4, SPIRALOCK OR EQUIVALENT NUT, LOW CARBON STEEL, ZINC PLATING BICHROMATED (TRIVALENT CHROMATE).
5. THE TORQUE SPECIFIED FOR NUT TERMINAL IS 1.8±0.3Nm.
6. TE LOGO.
7. SW7X M4, SPIRALOCK OR EQUIVALENT NUT, LOW CARBON STEEL, NICKEL PLATING.
8. SW7X M4-6H, NORMAL THREAD, LOW CARBON STEEL, ZINC PLATING BICHROMATED (TRIVALENT CHROMATE).



SCALE 1:1

DIRECTION OFF TOP OF REEL  
 ACC. TO TE SPEC. 107-3

REQ. PRE ASSY	DESCRIPTION	MATERIAL	FINISH	ITEM
2050842	NUT M4			4
	NUT M4			3
	NUT M4			2
	TERMINAL	PHOS. BRONZE	PRE-TIN	1

THIS DRAWING IS A CONTROLLED DOCUMENT. DWN: S. ZHU 02NOV09  
 CHK: W. YUAN 13NOV09  
 APVD: K. ODA 13NOV09

**STE** TE Connectivity

NAME: ASSY., TERMINAL\_RING\_TONGUE, M4

SIZE: A2 CAGE CODE: 00779 DRAWING NO: C-2050842 RESTRICTED TO: -

SCALE: 2:1 SHEET 1 OF 1 REV: D2

0.75-1.00 mm <sup>2</sup>	Ø1.55-2.10
WIRE RANGE	INS. RANGE