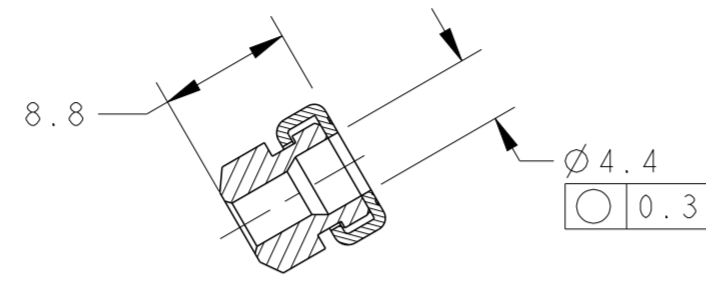
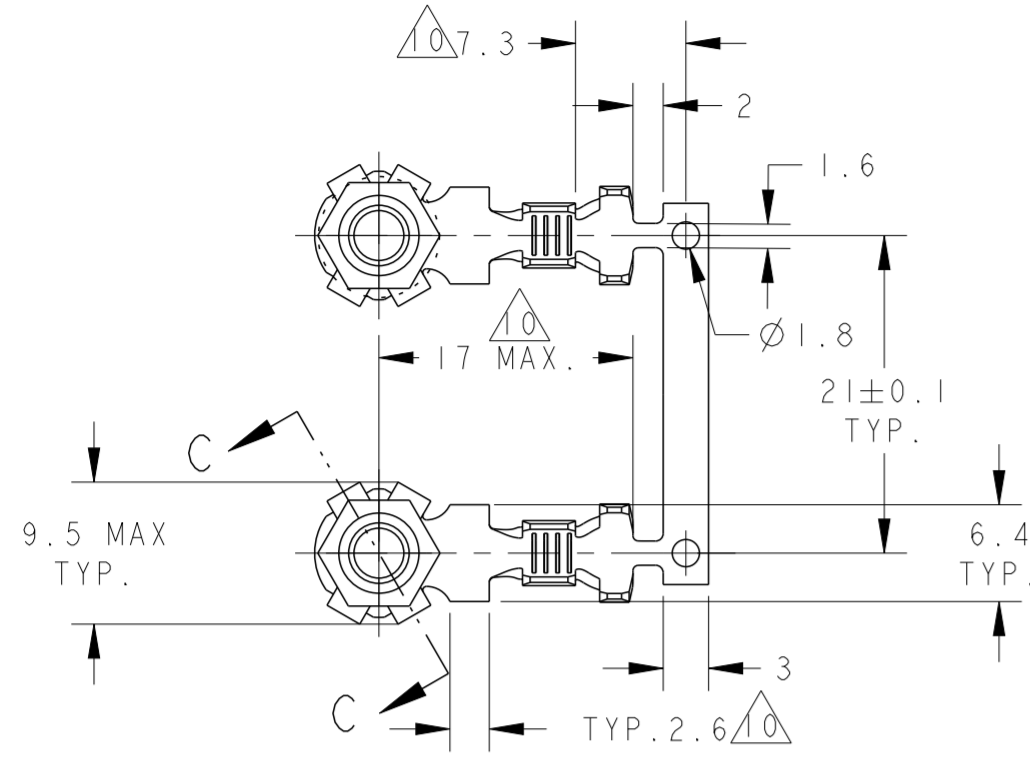
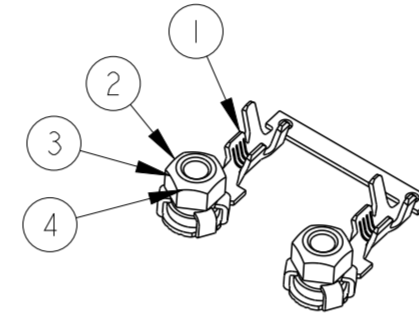


THIS DRAWING IS UNPUBLISHED. RELEASED FOR PUBLICATION  
 © COPYRIGHT - BY - ALL RIGHTS RESERVED.

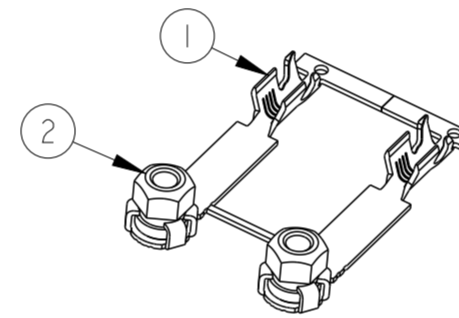
REVISIONS					
P	LTR	DESCRIPTION	DATE	DWN	APVD
D2		ECO-15-012967	09SEP15	JS	WY
D3		ECR-19-000800	21JAN19	J.Y	E.J
D4		ECR-19-004068	14MAR19	J.Y	E.J
D5		ECN-22-175900	22SEP2022	L.G	Z.Z



SECTION C-C



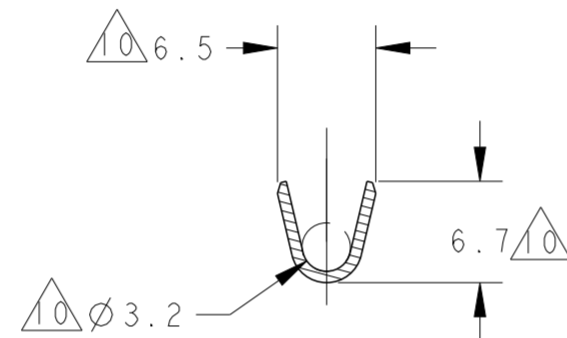
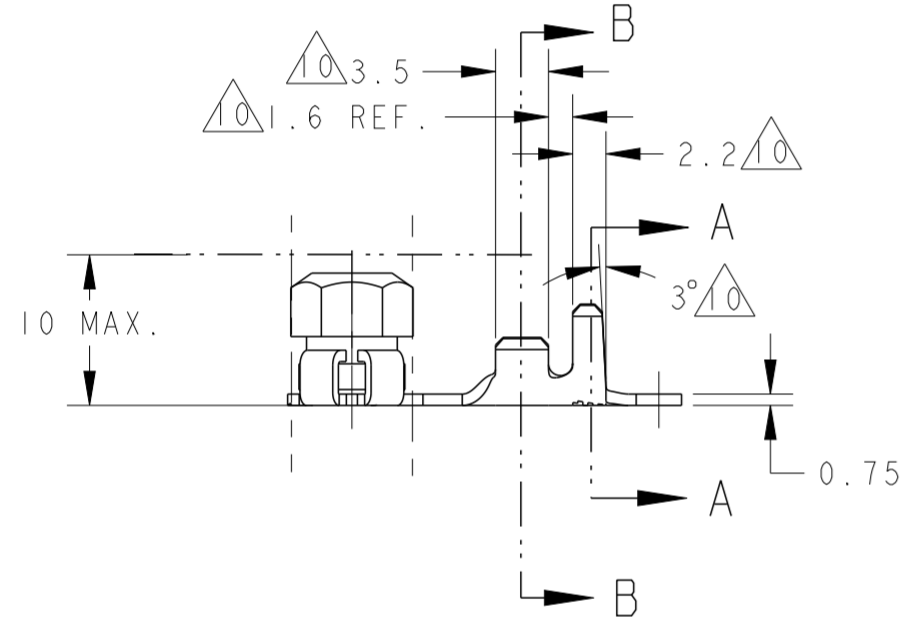
SCALE 1:1  
ISOMETRIC FOR -1/-3/-5



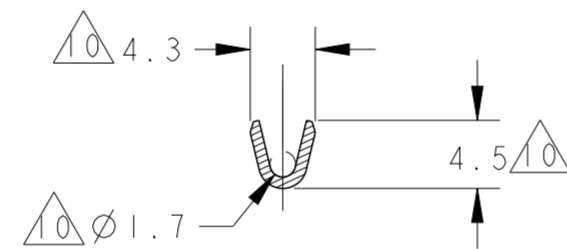
SCALE 1:1  
ISOMETRIC FOR -6

1. DELETE
2. DELETE
3. QUANTITY: 1000PCS PER REEL.
4. SW7x M4, SPIRALLOCK OR EQUIVALENT NUT, LOW CARBON STEEL, ZINC PLATING BICHROMATED (TRIVALENT CHROMATE).
5. THE TORQUE SPECIFIED FOR NUT TERMINAL IS 1.8±0.3Nm.
6. TE LOGO.
7. SW7x M4, SPIRALLOCK OR EQUIVALENT NUT, LOW CARBON STEEL, NICKEL PLATING.
8. SW7x M4-6H, NORMAL THREAD, LOW CARBON STEEL, ZINC PLATING BICHROMATED (TRIVALENT CHROMATE).

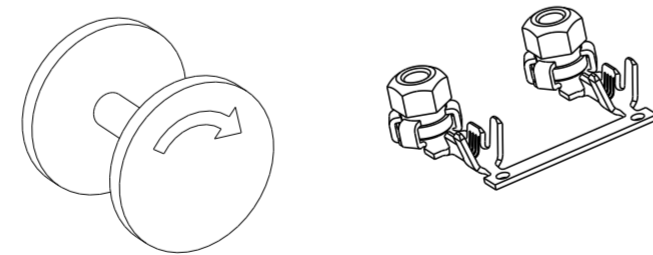
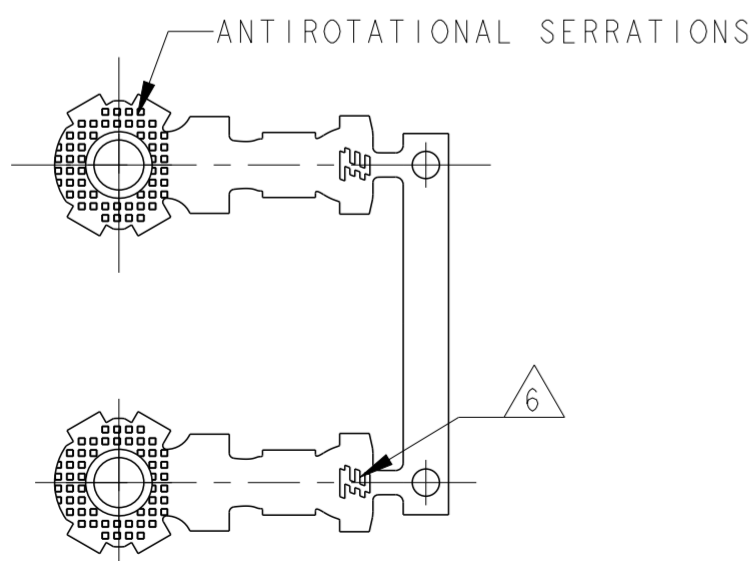
9. PART 2050216-1/-3/-5 SHOWN ON SHEET1  
 PART 2050216-6 SHOWN ON SHEET2
- DIMS WITHOUT  $\Delta 0$  ARE FOR ALL PARTS (2050216-1/-3/-5/-6)
- $\Delta 0$  DIMS FOR PART 2050216-1/-3/-5  
 $\Delta 1$  DIMS FOR PART 2050216-6



SECTION A-A



SECTION B-B



SCALE 1:1

DIRECTION OFF TOP OF REEL  
 ACC. TO TE SPEC. 107-3

QTY	WIRE RANGE	INS. RANGE	DESCRIPTION	MATERIAL	FINISH	ITEM
4			NUT M4			4
3			NUT M4			3
2			NUT M4			2
1			TERMINAL	PHOS. BRONZE	PRE-TIN	1
6	-5	-3				
REQ. PRE ASSY			DESCRIPTION	MATERIAL	FINISH	ITEM
2050216						

THIS DRAWING IS A CONTROLLED DOCUMENT.

DWN S.ZHU 02NOV09  
 CHK W.YUAN 13NOV09  
 APVD K.ODA 13NOV09  
 PRODUCT SPEC 108-101142  
 APPLICATION SPEC 114-101016



NAME ASSY., TERMINAL\_RING\_TONGUE, M4

DIMENSIONS: mm  
 TOLERANCES UNLESS OTHERWISE SPECIFIED:  
 0-PLC ±0.3  
 1-PLC ±0.1  
 2-PLC ±0.01  
 3-PLC ±0.001  
 4-PLC ±0.0001  
 ANGLES ±3°  
 FINISH

SIZE A2 CAGE CODE 00779 DRAWING NO. C-2050216 RESTRICTED TO

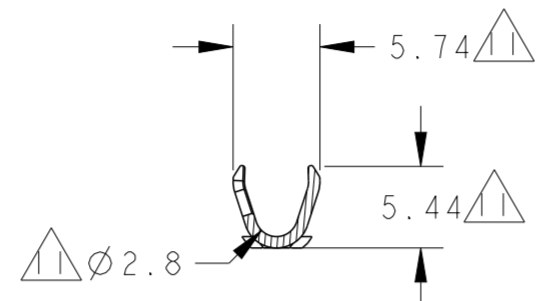
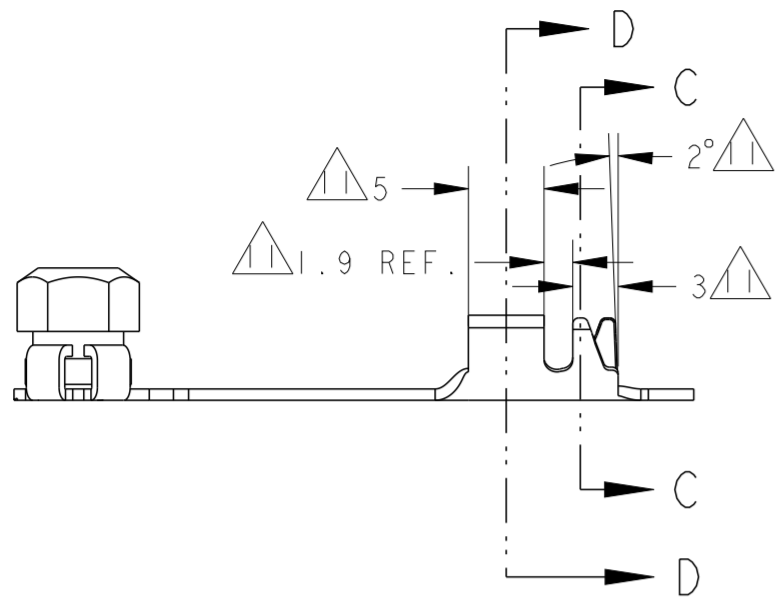
>1.0-2.5 mm <sup>2</sup>	Ø1.82-3.00
WIRE RANGE	INS. RANGE

MATERIAL material\_2  
 FINISH finish\_spec\_2

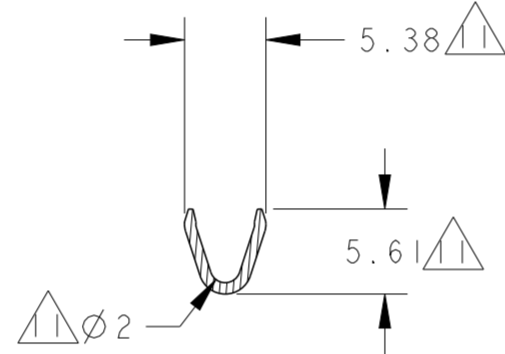
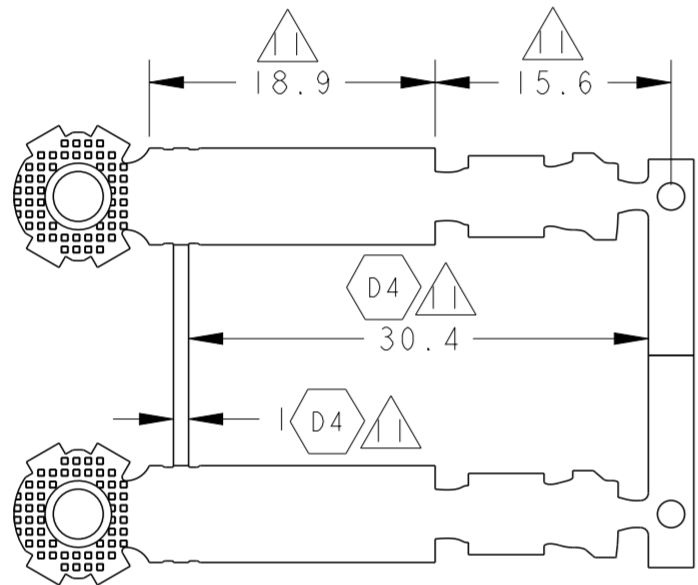
CUSTOMER DRAWING SCALE 2:1 SHEET 1 OF 2 REV D5

THIS DRAWING IS UNPUBLISHED. RELEASED FOR PUBLICATION  
 © COPYRIGHT - BY - ALL RIGHTS RESERVED.

REVISIONS				
P	LTR	DESCRIPTION	DATE	APVD
		SEE SHEET 1		

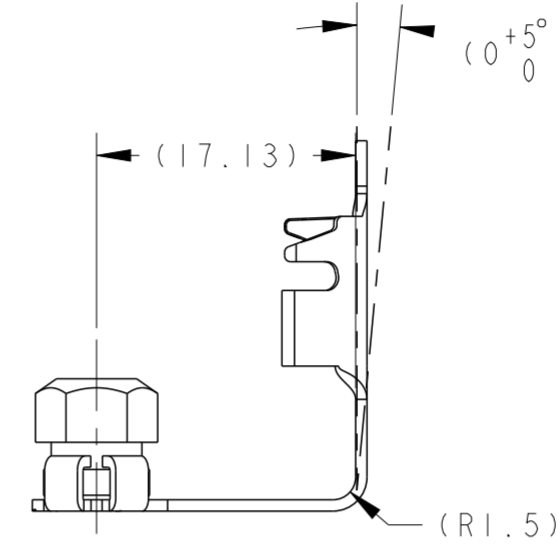


SECTION C-C

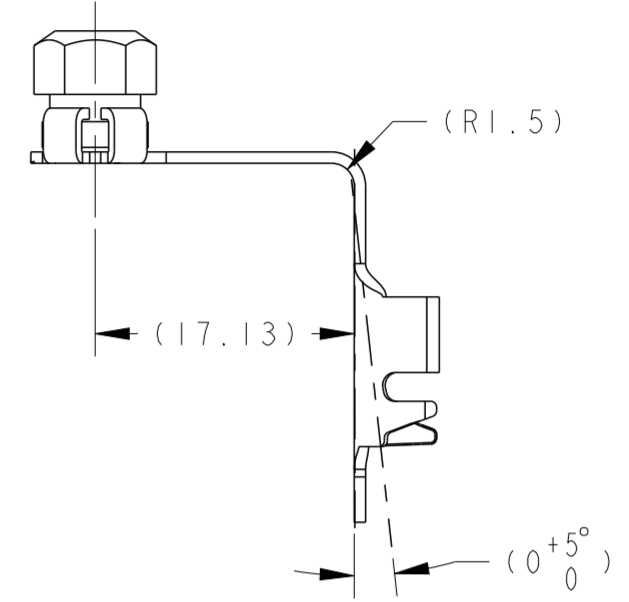


SECTION D-D

RECOMMENDED APPLICATION FOR 2050216-6



TYPE 1



TYPE 2

THIS DRAWING IS A CONTROLLED DOCUMENT.		DWN S. ZHU	02NOV09	TE Connectivity	
DIMENSIONS: mm		CHK W. YUAN	13NOV09		
TOLERANCES UNLESS OTHERWISE SPECIFIED: $\pm 0.3$		APVD K. ODA	13NOV09	NAME ASSY., TERMINAL_RING_TONGUE, M4	
0-PLC $\pm 0.3$ 1-PLC $\pm 0.1$ 2-PLC $\pm 0.01$ 3-PLC $\pm 0.001$ 4-PLC $\pm 0.0001$ ANGLES $\pm 3^{\circ}$ FINISH		PRODUCT SPEC 108-101142		DRAWING NO C-2050216	
MATERIAL material_2		APPLICATION SPEC 114-101016		RESTRICTED TO	
FINISH finish_spec_2		WEIGHT		SCALE 2:1 SHEET 2 OF 2 REV D5	
CUSTOMER DRAWING				A200779	