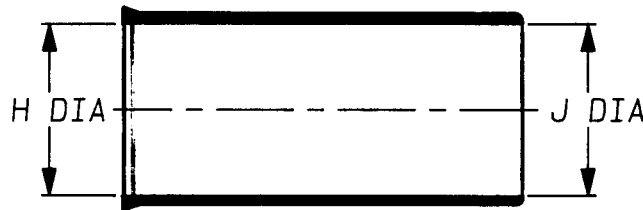
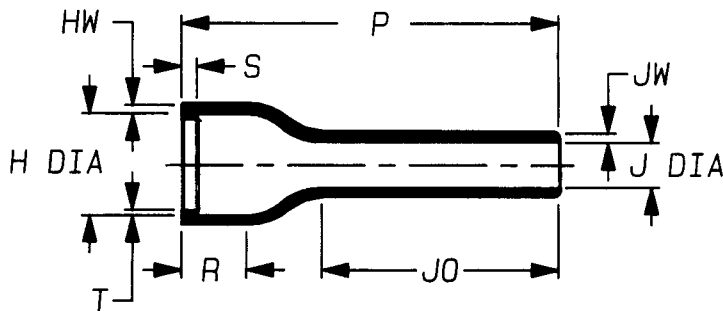


202D232-\*G02

a) Part as supplied



b) Part after unrestricted recovery



DIMENSIONS (in millimetres)

Part No.	H		J		P	JO	R	S	T	HW	JW
	Min	Max	Min	Max	±10%	±10%	Ref	Ref	Ref	±20%	±20%
	a	b	a	b	b	b	b	b	b	b	b
202D232-*G02	30	18.8	30	8.4	70 #	44 #	12	3.0	1.0	1.8	1.1

THIS IS A TRIMMED VARIANT  
MODIFIED DIMENSIONS ARE SHOWN THUS: - #

Copyright (!)

Urheberrechte

The copyright in this drawing is the property of Raychem Ltd. The drawing is issued on condition that it is not copied, reproduced or disclosed to a third party, either in whole or in part without the prior written consent of Raychem Ltd.

Drawn A.LILLEY. Checked *[Signature]* Issue 3 Date March 1998

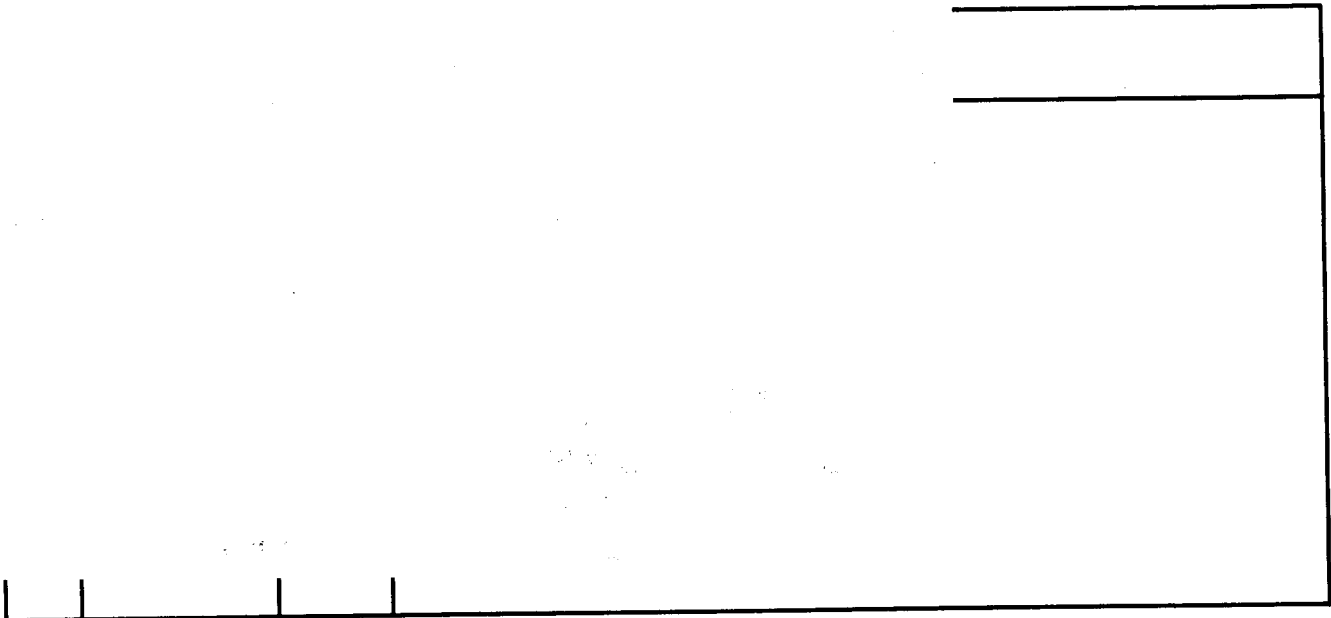
Conforms to ISO Recommendations  
3rd Angle Projection  
Not to Scale

Approval *[Signature]*  
Design

MKTG. *[Signature]*

*[Signature]*





### COMPATIBILITY CHART

MATERIAL DASH NUMBER	MATERIAL DESCRIPTION	COATING SLASH NUMBER
-3	POLYOLEFIN, SEMI-RIGID	/42, /86
-4	POLYOLEFIN, FLEXIBLE	/42, /86
-25	ELASTOMER, FLUID RESISTANT	/86, /225

AS SUPPLIED DIMENSIONS ARE FOR UNCOATED PARTS,  
WHEN COATING IS ADDED, ENTRY DIAMETERS WILL REDUCE BY 1.5mm MAX.