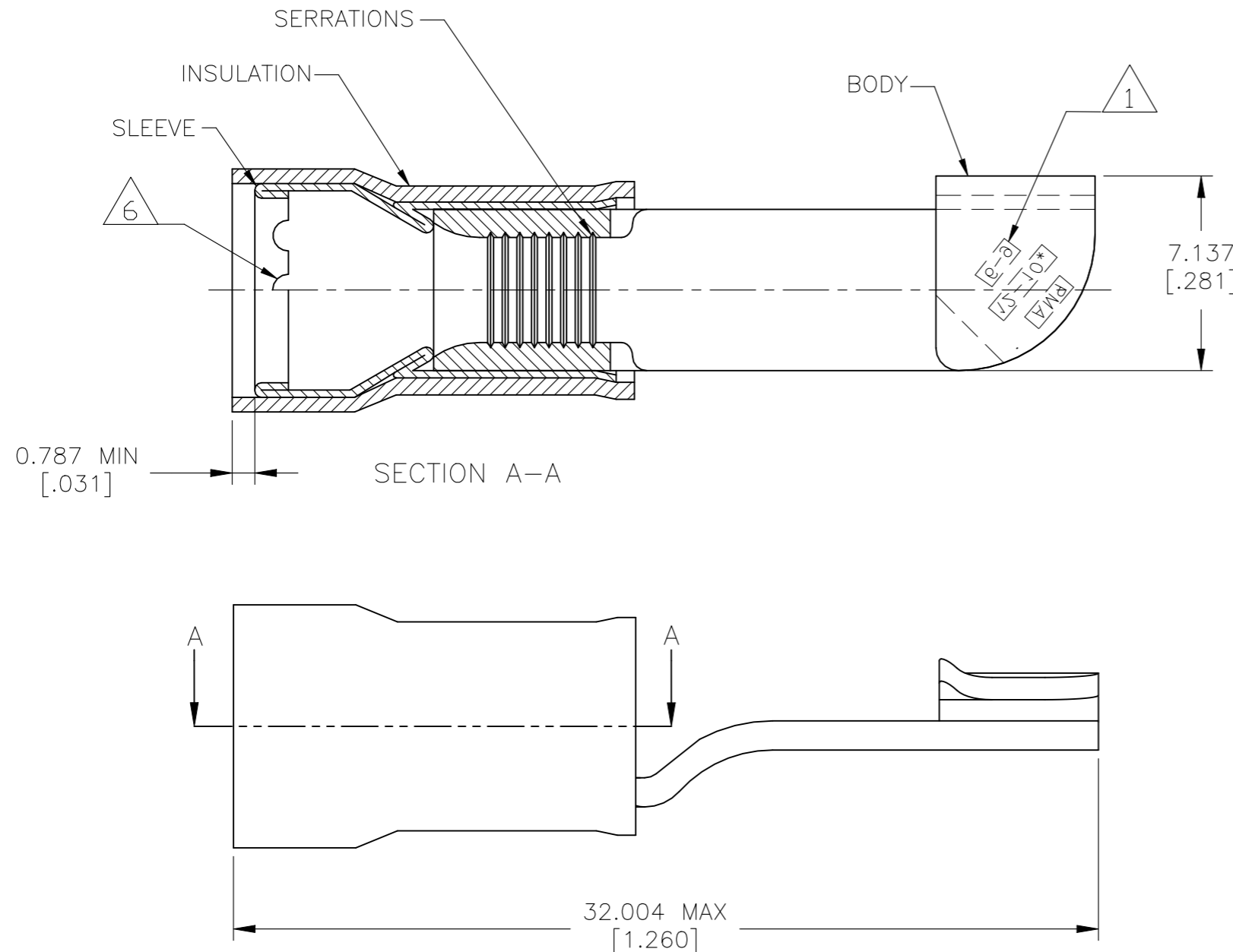


P	LTR	DESCRIPTION	DATE	DWN	APVD
	A	INITIAL RELEASE	03MAR2022	GK	SC



- 1 STAMP AMP 12-10* 6-9 APPROX AS SHOWN.
- 2. WIRE INSULATION DIAMETER:
 $\phi 3.810-6.350[\phi .150-.250]$
- 3. BODY MATERIAL THK: $0.991 \pm 0.051[.039 \pm .002]$
- 4 MATERIAL:
 BODY & SLEEVE - COPPER PER ASTM B152
 INSULATION - NYLON PER ASTM D4066 TYPE 1
- 5 FINISH:
 BODY & SLEEVE - TIN PLATE $0.00254[.000100]$
 MIN EXT THK PER ASTM B545
 INSULATION COLOR - YELLOW
- 6 INTERNAL EDGE FEATURE MAY BE SOLID OR SCALLOPED

50	KD060-N	1SET163004R0000	35762
QTY	DESIGNATION	ENTRELEC PN	TE PN

MAX RECOMMENDED OPERATING TEMPERATURE: 105°C [221°F] VOLTAGE RATING: 300V MAX WIRE CROSS SECTIONAL AREA RANGE: $2.62-6.64\text{mm}^2 [5,180-13,100]$ SOLID OR STRANDED	THIS DRAWING IS A CONTROLLED DOCUMENT.		DWN 03MAR2022 GOPALAKRISHNA HV CHK 03MAR2022 SUVARNA CHETHAN APVD 03MAR2022 SUVARNA CHETHAN		ENTRELEC Electrical Solutions			
	DIMENSIONS: mm [INCHES]	TOLERANCES UNLESS OTHERWISE SPECIFIED: 0 PLC ± - 1 PLC ± - 2 PLC ± - 3 PLC ± 0.127[.005] 4 PLC ± - ± - ANGLES ± -		NAME TERMINAL, KNIFE DISCONNECT, PIDG, WIRE SIZE: 12-10 AWG				
	MATERIAL 4	FINISH 5	PRODUCT SPEC UL 486A-B		SIZE	CAGE CODE	DRAWING NO	RESTRICTED TO
			APPLICATION SPEC 114-2157		A3	-	G-1SET163004R0000	-
CUSTOMER DRAWING			WEIGHT	SCALE 5:1		SHEET 1 OF 1	REV A	