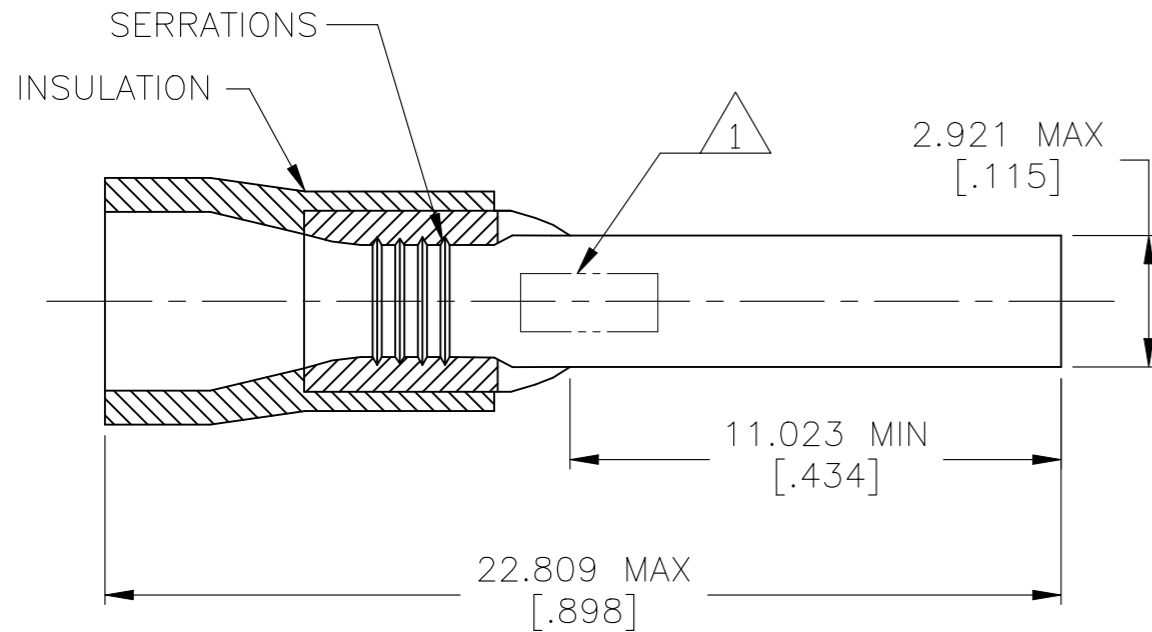


P	LTR	DESCRIPTION	DATE	DWN	APVD
	A	ECO-20-012219	30NOV2020	GK	DR



16-14 AWG  
STRANDED

16-14 AWG  
STRANDED



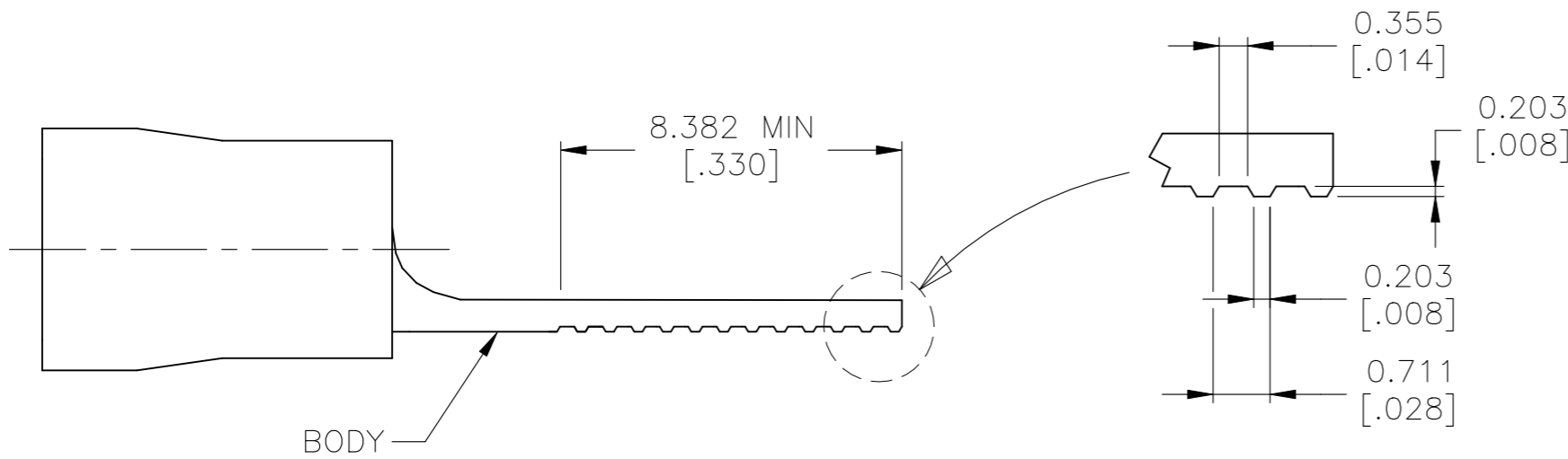
1 STAMP AMP 16-14 APPROX AS SHOWN

2. WIRE INSULATION DIAMETER:  $\phi 2.997-4.902$  [ $\phi .118-.193$ ]

3. BODY MATERIAL THK:  $0.787 \pm 0.051$  [ $.031 \pm .002$ ]

4 MATERIAL: BODY - COPPER PER ASTM B152  
INSULATION - PVC

5 FINISH: BODY - TIN PLATE  $0.00254$  [ $.000100$ ] MIN EXT THK PER ASTM B545  
INSULATION COLOR - BLUE



100	WPF025-V	1SET152002R0000	131444
QTY	DESIGNATION	ENTRELEC PN	TE PN

THIS DRAWING IS A CONTROLLED DOCUMENT.

DWN 30NOV2020  
GOPALAKRISHNA HV

CHK 30NOV2020  
ROHDE DANIEL F

APVD 30NOV2020  
ROHDE DANIEL F

PRODUCT SPEC

UL 486A-B

APPLICATION SPEC

114-2161

WEIGHT -

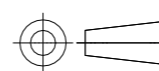
**ENTRELEC**  
Electrical Solutions

NAME  
TERMINAL, TAB, PLASTI-GRIP,  
16-14 AWG

SIZE	CAGE CODE	DRAWING NO	RESTRICTED TO
A3	00779	C-1SET152002R0000	-

MAX RECOMMENDED OPERATING TEMPERATURE: 105°C [221°F]
VOLTAGE RATING: 600 V MAX (1000 V SIGN OR FIXTURE)
CIRCULAR MIL AREA: 1.04-2.62mm <sup>2</sup> [2,050-5,180] SOLID OR STRANDED

DIMENSIONS:  
mm [INCHES]



TOLERANCES UNLESS OTHERWISE SPECIFIED:	
0 PLC	± -
1 PLC	± -
2 PLC	± -
3 PLC	± 0.127[.005]
4 PLC	± -
ANGLES	± 1°
FINISH	- 4
	- 5

MATERIAL



CUSTOMER DRAWING

SCALE	SHEET	REV
5:1	1 OF 1	A