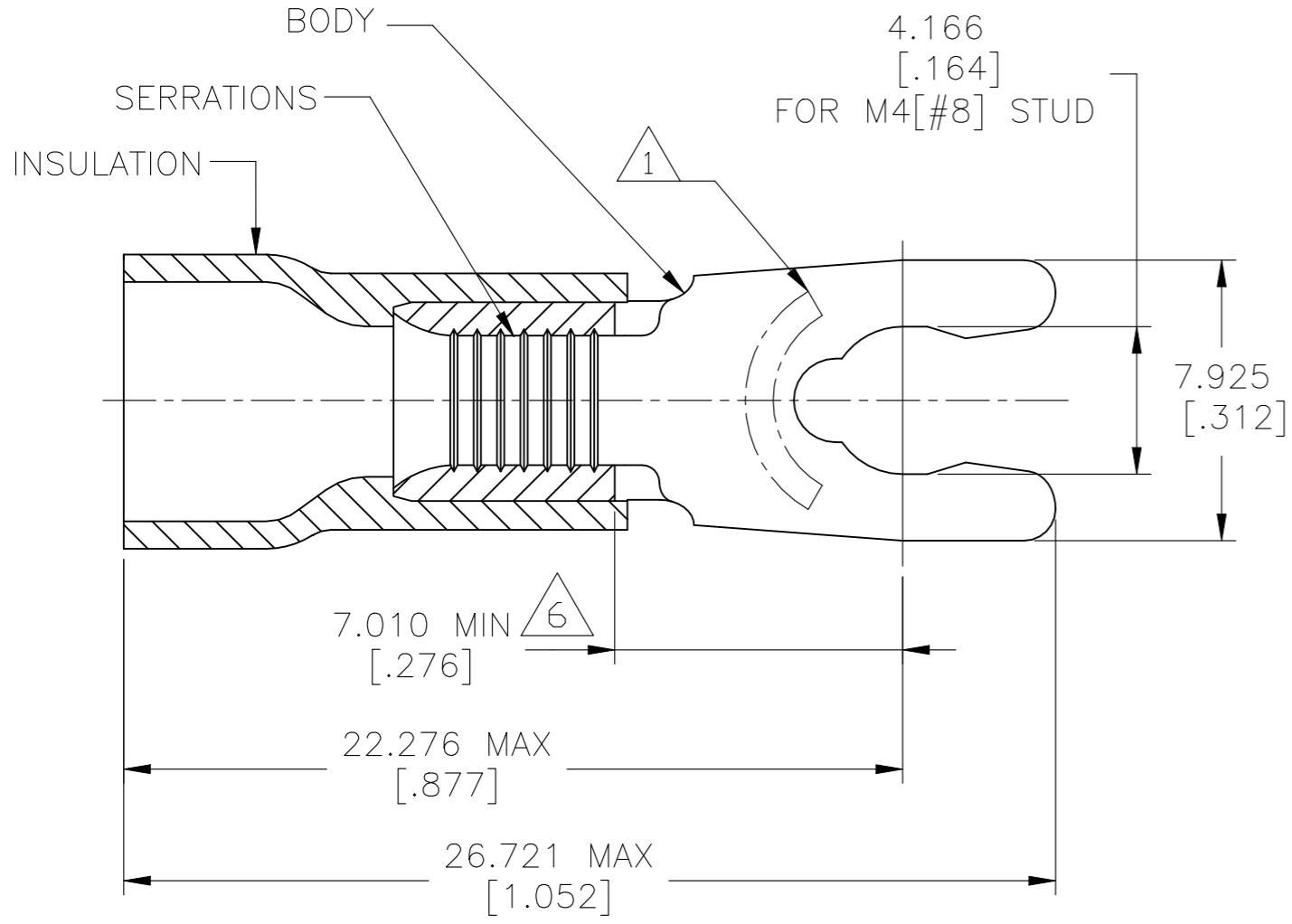


P	LTR	DESCRIPTION	DATE	DWN	APVD
	A	ECO-20-012219	13NOV2020	GK	DR

 Listed	 Certified
12 AWG STRANDED	12-10 AWG SOLID OR STRANDED



- 1 STAMP 8SAMP 12-10* APPROX AS SHOWN
- 2. WIRE INSULATION DIAMETER: $\phi 3.810 - 6.350$ [$\phi .150 - .250$]
- 3. BODY MATERIAL THK: 1.016 ± 0.051 [$.040 \pm .002$]
- 4 MATERIAL: BODY - BRASS PER ASTM B36
INSULATION - PVC
- 5 FINISH: BODY - TIN PLATE 0.00254 [$.000100$] MIN EXT THK PER ASTM B545
INSULATION COLOR - YELLOW
- 6 APPLIES FROM EDGE OF METAL WIRE BARREL TO CENTER OF STUD HOLE

100	SDS060-040-V	1SET133010R0000	53247-1
QTY	DESIGNATION	ENTRELEC PN	TE PN

MAX RECOMMENDED OPERATING TEMPERATURE: 105°C [221°F] VOLTAGE RATING: 600V MAX (1000V FIXTURE OR SIGN) CIRCULAR MIL AREA: 2.62-6.64mm ² [5,180-13,100] SOLID OR STRANDED	THIS DRAWING IS A CONTROLLED DOCUMENT.	DWN 13NOV2020 GOPALAKRISHNA HV CHK 13NOV2020 ROHDE DANIEL F APVD 13NOV2020 ROHDE DANIEL F	ENTRELEC Electrical Solutions			
	DIMENSIONS: mm [INCHES]	TOLERANCES UNLESS OTHERWISE SPECIFIED: 0 PLC ± - 1 PLC ± - 2 PLC ± - 3 PLC ± 0.127[.005] 4 PLC ± - ANGLES ± -			NAME TERMINAL, SPRING SPADE, SHORT, PLASTI-GRIP WIRE SIZE: 12-10 AWG	
	MATERIAL 4	FINISH 5	PRODUCT SPEC UL 486A-B APPLICATION SPEC 114-2161 WEIGHT -	SIZE A3	CAGE CODE 00779	DRAWING NO C-1SET133010R0000