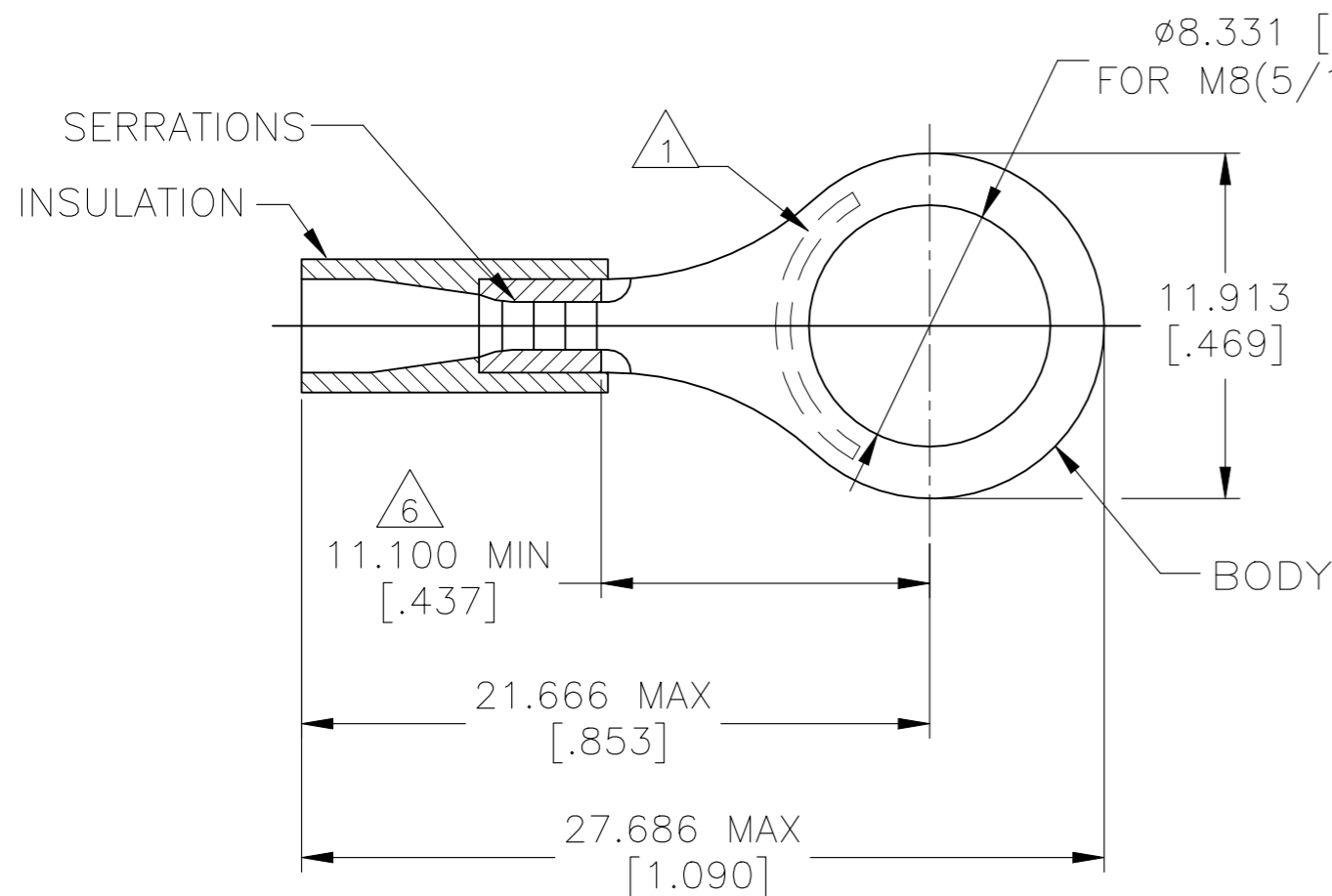


P	LTR	DESCRIPTION	DATE	DWN	APVD
	A	ECO-20-012219	07SEP2020	GK	DR

 Listed	 Certified
22-16 AWG SOLID OR STRANDED	22-16 AWG SOLID OR STRANDED



- 1 STAMP AMP 22-18* APPROX AS SHOWN
WIRE RANGE IS 22-16 AWG
- 2. WIRE INSULATION DIAMETER: $\phi 2.667 - 3.556 [\phi .105 - .140]$
- 3. BODY MATERIAL THK: $0.787 \pm 0.051 [.031 \pm .002]$
- 4 MATERIAL: BODY - CU PER ASTM B152
INSULATION - PVC
- 5 FINISH: BODY - TIN PLATE $0.00254 [.000100]$ MIN EXT THK PER ASTM B545
INSULATION COLOR - RED
- 6 APPLIES FROM EDGE OF METAL WIRE BARREL TO CENTER OF STUD HOLE

100	RT015-080-V	1SET121007R0000	34151
QTY	DESIGNATION	ENTRELEC PN	TE PN

MAX RECOMMENDED OPERATING TEMPERATURE: 105°C [221°F] VOLTAGE RATING: 600V MAX (1000V FIXTURE OR SIGN) CIRCULAR MIL AREA: 0.26-1.65mm ² [509-3260] SOLID OR STRANDED	THIS DRAWING IS A CONTROLLED DOCUMENT.		DWN 07SEP2020 GOPALAKRISHNA HV CHK 07SEP2020 ROHDE DANIEL F APVD 07SEP2020 ROHDE DANIEL F		ENTRELEC Electrical Solutions					
	DIMENSIONS: mm [INCHES]	TOLERANCES UNLESS OTHERWISE SPECIFIED: 0 PLC ± - 1 PLC ± - 2 PLC ± - 3 PLC ± 0.127[.005] 4 PLC ± - ANGLES ± -	PRODUCT SPEC UL 486A-B APPLICATION SPEC 114-2161						NAME TERMINAL, RING TONGUE, PLASTI-GRIP WIRE SIZE, 22-16 AWG	
	MATERIAL	- 4	FINISH	- 5	SIZE	CAGE CODE	DRAWING NO	RESTRICTED TO		
	CUSTOMER DRAWING				WEIGHT	A3	00779	C-1SET121007R0000	SCALE 4:1	SHEET 1 OF 1