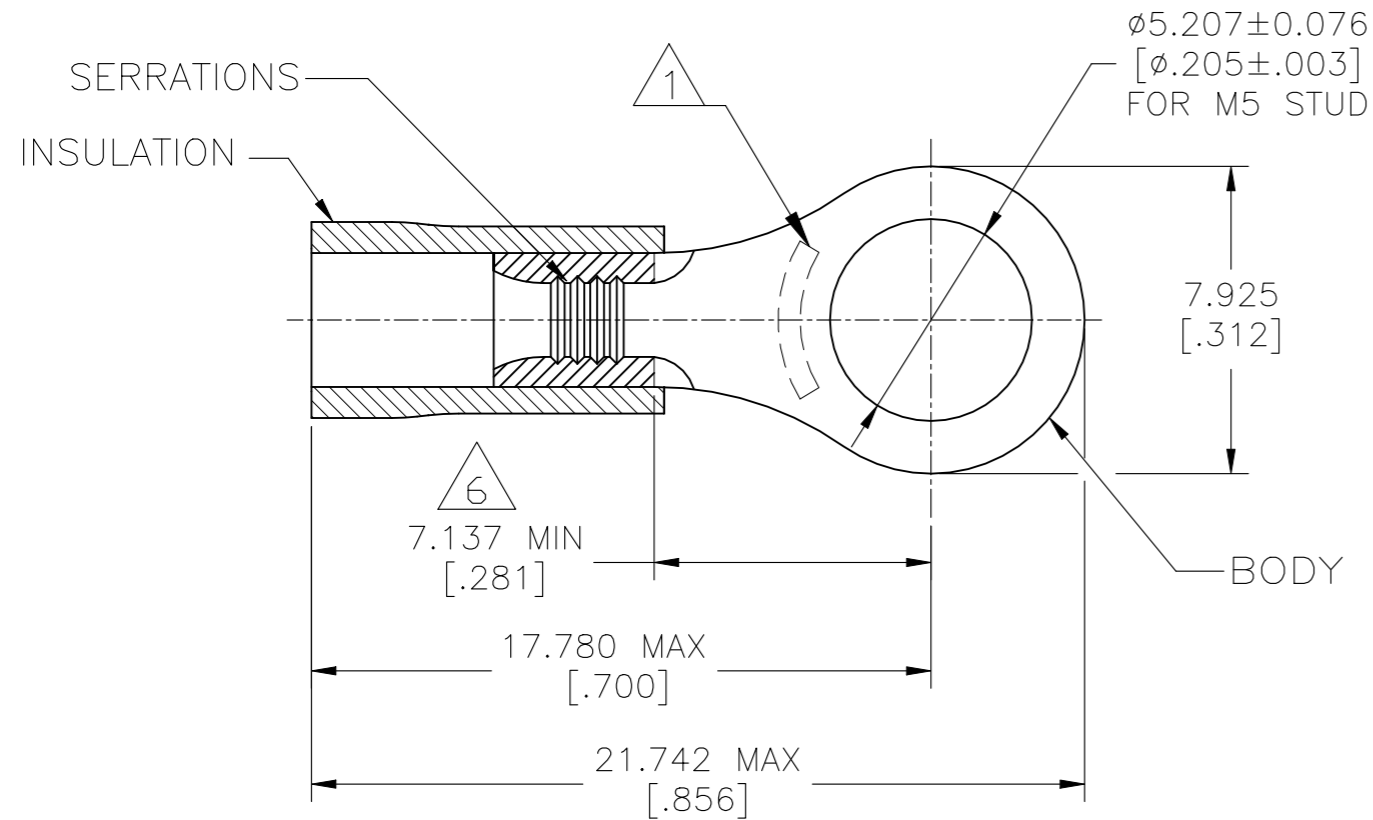


P	LTR	DESCRIPTION	DATE	DWN	APVD
	A	ECO-20-012219	04SEP2020	GK	DR

 Listed	 Certified
22-16 AWG SOLID OR STRANDED	22-16 AWG SOLID OR STRANDED



- 1 STAMP AMP 22-16* APPROX AS SHOWN
- 2. WIRE INSULATION DIAMETER: $\varnothing 2.667 - 3.556$ [$\varnothing .105 - .140$]
- 3. BODY MATERIAL THK: 0.787 ± 0.051 [$.031 \pm .002$]
- 4 MATERIAL: BODY - CU PER ASTM B152
INSULATION - PVC
- 5 FINISH: BODY - TIN PLATE 0.00254 [$.000100$] MIN EXT THK PER ASTM B545
INSULATION COLOR - RED
- 6 APPLIES FROM EDGE OF METAL WIRE BARREL TO CENTER OF STUD HOLE

100	RT015-050-V	1SET121005R0000	130014
QTY	DESIGNATION	ENTRELEC PN	TE PN

MAX RECOMMENDED OPERATING TEMPERATURE: 105°C [221°F] VOLTAGE RATING: 600 V MAX 100 V SIGN OR FIXTURE CIRCULAR MIL AREA: 0.26-1.65mm²[509-3260] SOLID OR STRANDED	DIMENSIONS: mm [INCHES]	TOLERANCES UNLESS OTHERWISE SPECIFIED: 0 PLC ± - 1 PLC ± - 2 PLC ± - 3 PLC ± 0.127[.005] 4 PLC ± - ANGLES ± -	DWN 04SEP2020 GOPALAKRISHNA HV CHK 04SEP2020 ROHDE DANIEL F APVD 04SEP2020 ROHDE DANIEL F PRODUCT SPEC UL 486A-B APPLICATION SPEC 114-2161 WEIGHT	ENTRELEC Electrical Solutions			NAME TERMINAL, RING TONGUE, PLASTI-GRIP WIRE SIZE : 22-16 AWG	RESTRICTED TO -
	MATERIAL	FINISH	SIZE A3	CAGE CODE 00779	DRAWING NO C-1SET121005R0000			
	- 4	- 5	CUSTOMER DRAWING			SCALE 5:1		