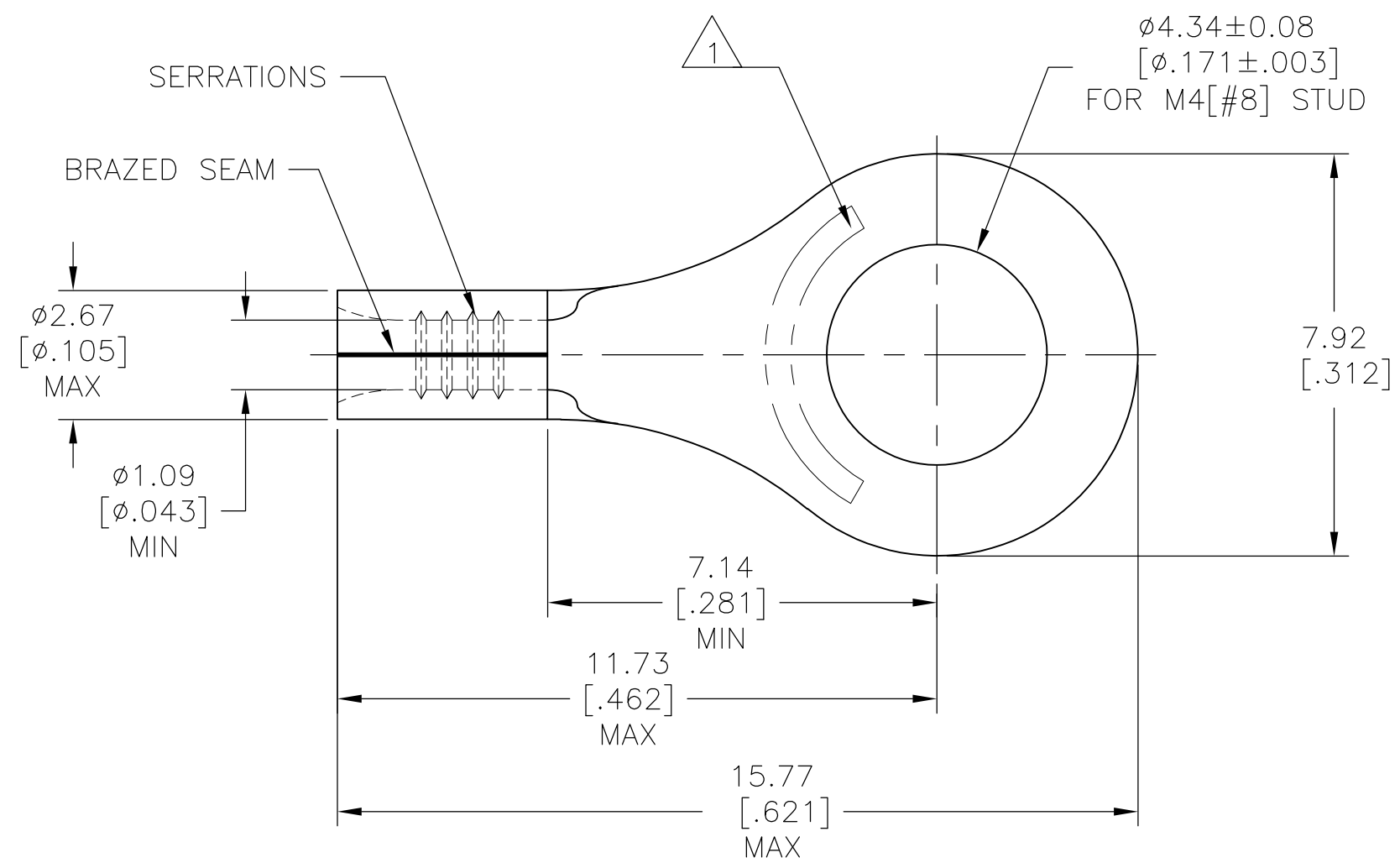


THIS DRAWING IS UNPUBLISHED. RELEASED FOR PUBLICATION
 © COPYRIGHT - By - ALL RIGHTS RESERVED.

LOC	DIST	REVISIONS			
P	LTR	DESCRIPTION	DATE	DWN	APVD
G	05	A	REVISED PER ECO-13-018306	26NOV2013	KH DR

- 1 STAMP "AMP 24-20" APPROX AS SHOWN
- 2 MATERIAL : COPPER PER ASTM B152, ANNEALED
- 3 FINISH : TIN PLATE 0.00254[.000100] MIN EXT THK, PER ASTM B545
- 4 MATERIAL THICKNESS: 0.58±0.05[.023±.002]



1000	LOOSE PIECE	1958466-1
QTY	PACKAGE TYPE	PART NUMBER

AMP INCORPORATED CUSTOMER SERVICE SYSTEMS		MAX RECOMMENDED OPERATING TEMPERATURE: 170°C [338°F]	THIS DRAWING IS A CONTROLLED DOCUMENT.		DWN KIRAN HOLAL 07JUN2013	TE Connectivity WIRE TERMINAL SOLISTRAND RING TONGUE WIRE SIZE : 24-20				
FOR ADDITIONAL PRODUCT INFORMATION OR COPIES OF DRAWINGS AND TECHNICAL DOCUMENTS	PRODUCT INFORMATION CENTER 1-800-522-6752	VOLTAGE RATING: N/A	DIMENSIONS: mm [INCHES]	TOLERANCES UNLESS OTHERWISE SPECIFIED:	CHK ROHDE DANIEL 07JUN2013				NAME	
FOR APPLICATION TOOLING INFORMATION	TOOLING ASSISTANCE CENTER 1-800-722-1111	WIRE: 0.16-0.65mm ² [320-1,290] CIR MILS STRANDED		0 PLC ± - 1 PLC ± - 2 PLC ± - 3 PLC ± .008 4 PLC ± - ± 1' ANGLES	APVD ROHDE DANIEL 07JUN2013	PRODUCT SPEC	SIZE	CAGE CODE	DRAWING NO	RESTRICTED TO
FOR ORDER ENTRY	1-800-526-5142	THIS DRAWING IS A CONTROLLED DOCUMENT FOR AMP INCORPORATED. IT IS SUBJECT TO CHANGE AND THE CONTROLLING ENGINEERING ORGANIZATION SHOULD BE CONTACTED FOR THE LATEST REVISION.	MATERIAL	FINISH	PRODUCT SPEC	APPLICATION SPEC	A3	00779	C-1958466	-
CUSTOMER DRAWING						WEIGHT	SCALE 8:1		SHEET 1 OF 1	REV A