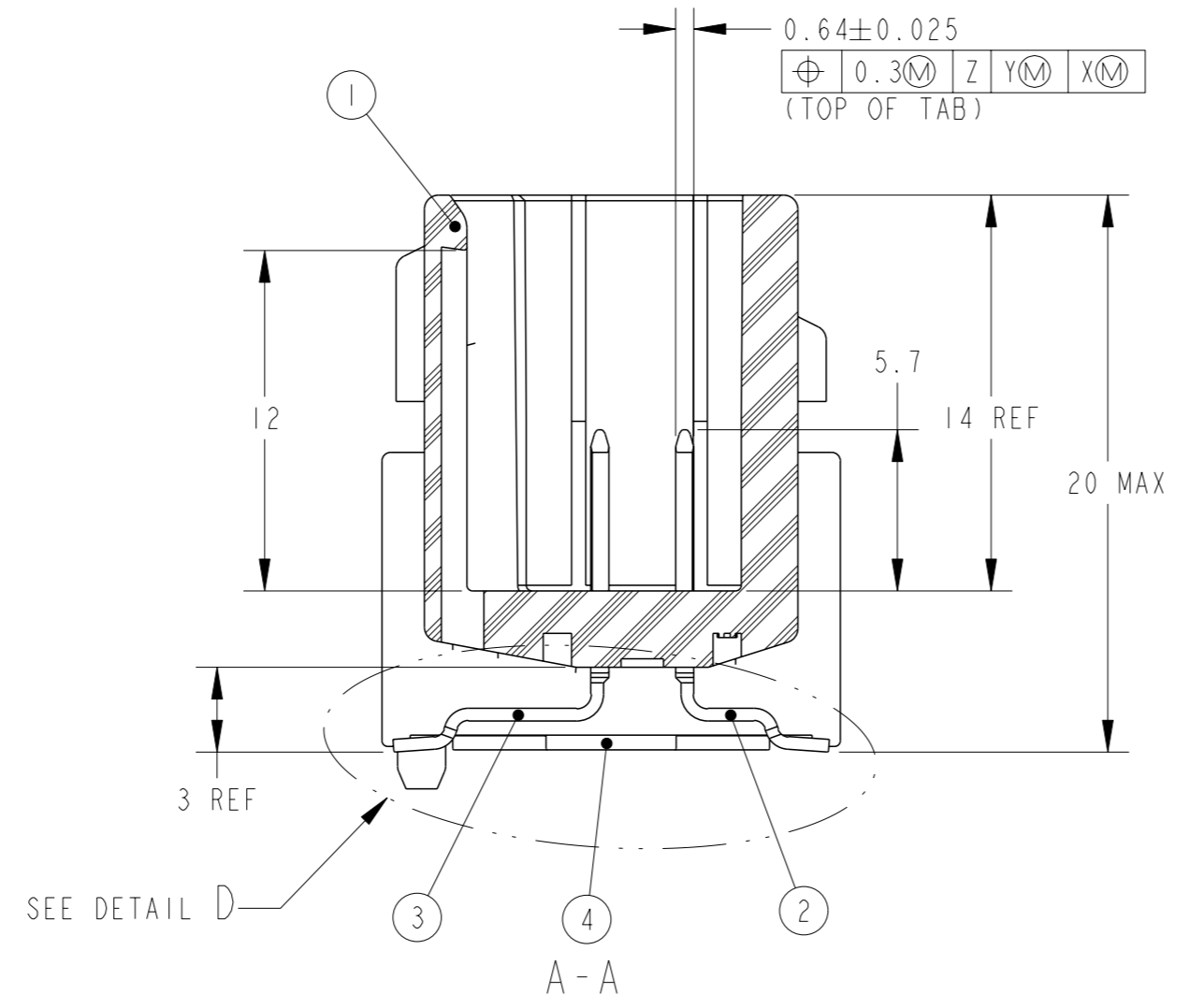
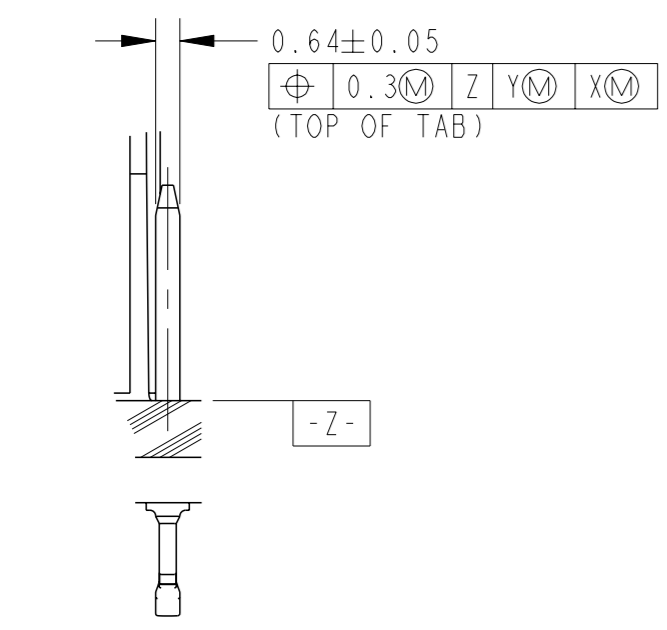
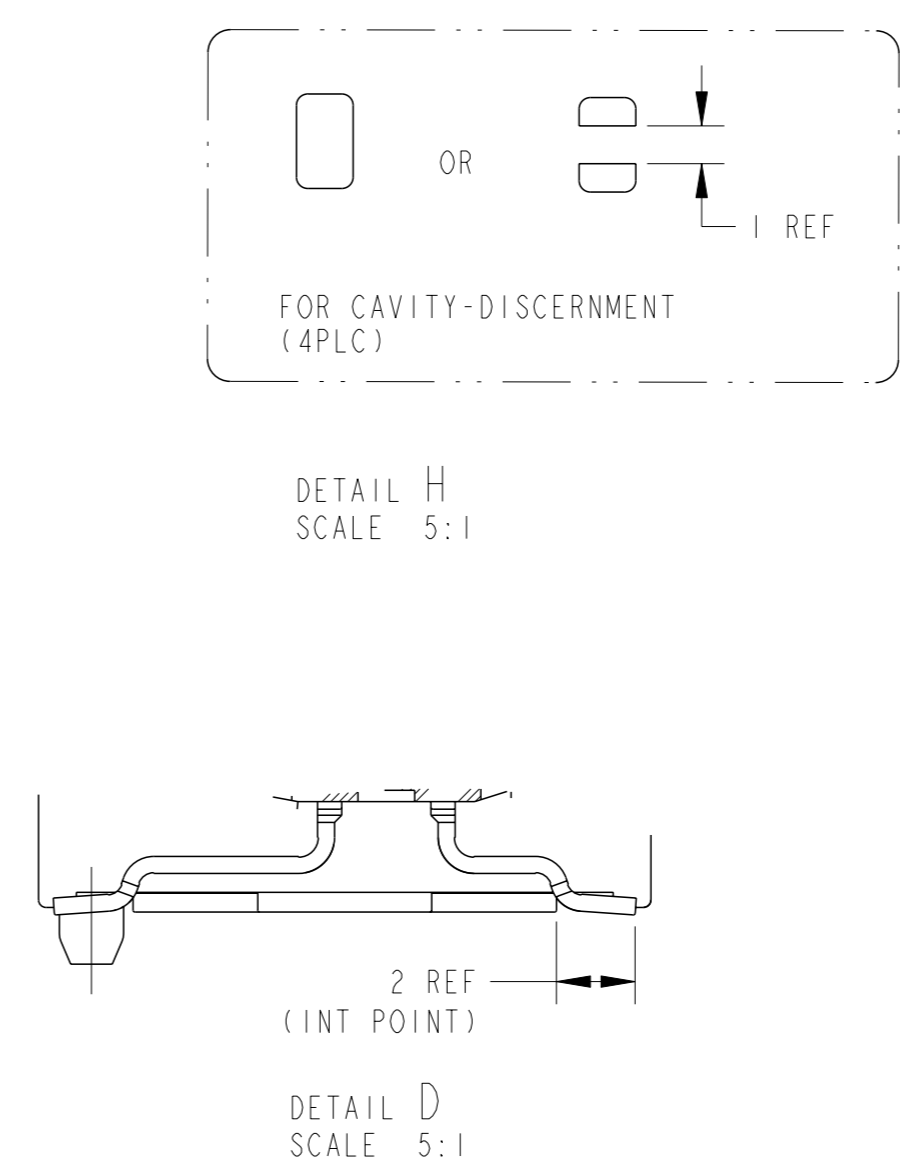
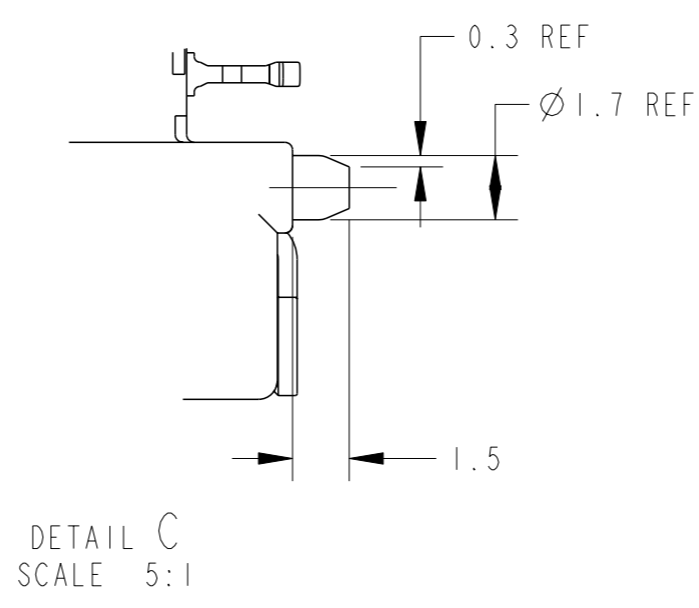
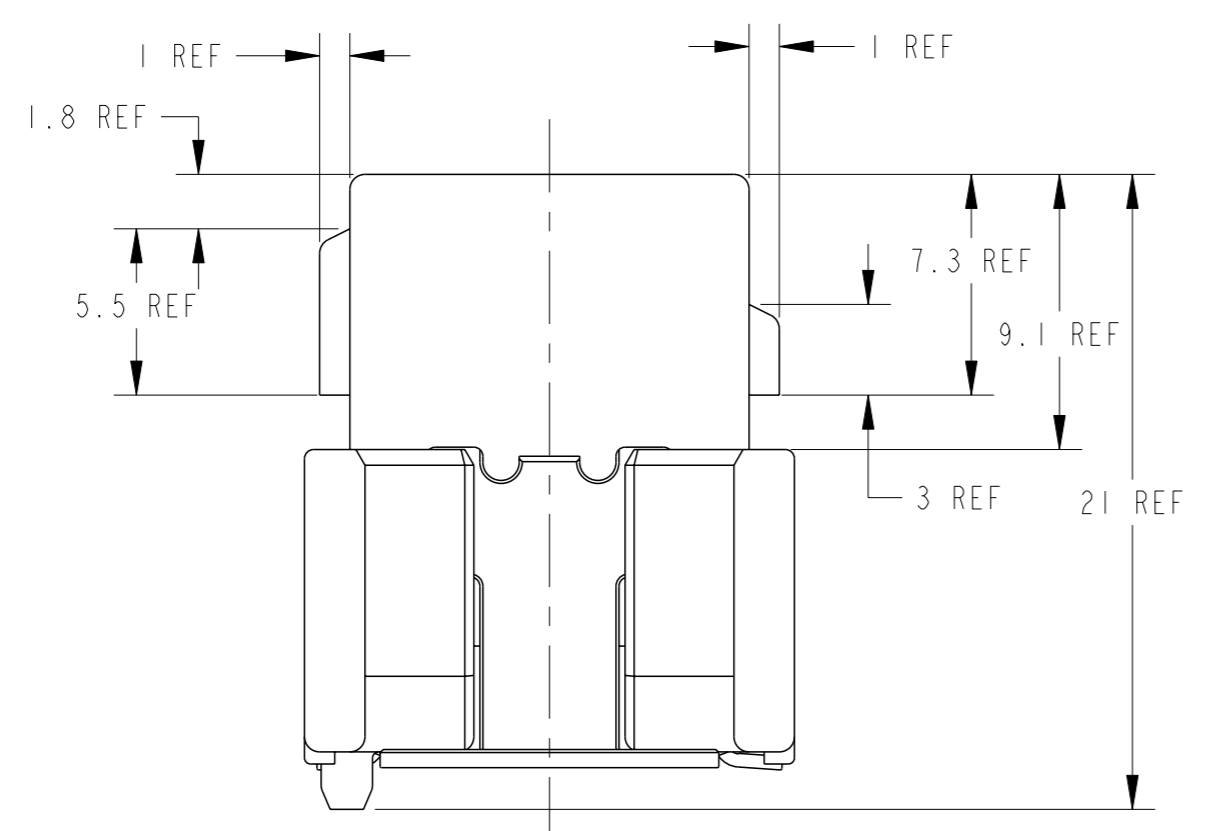
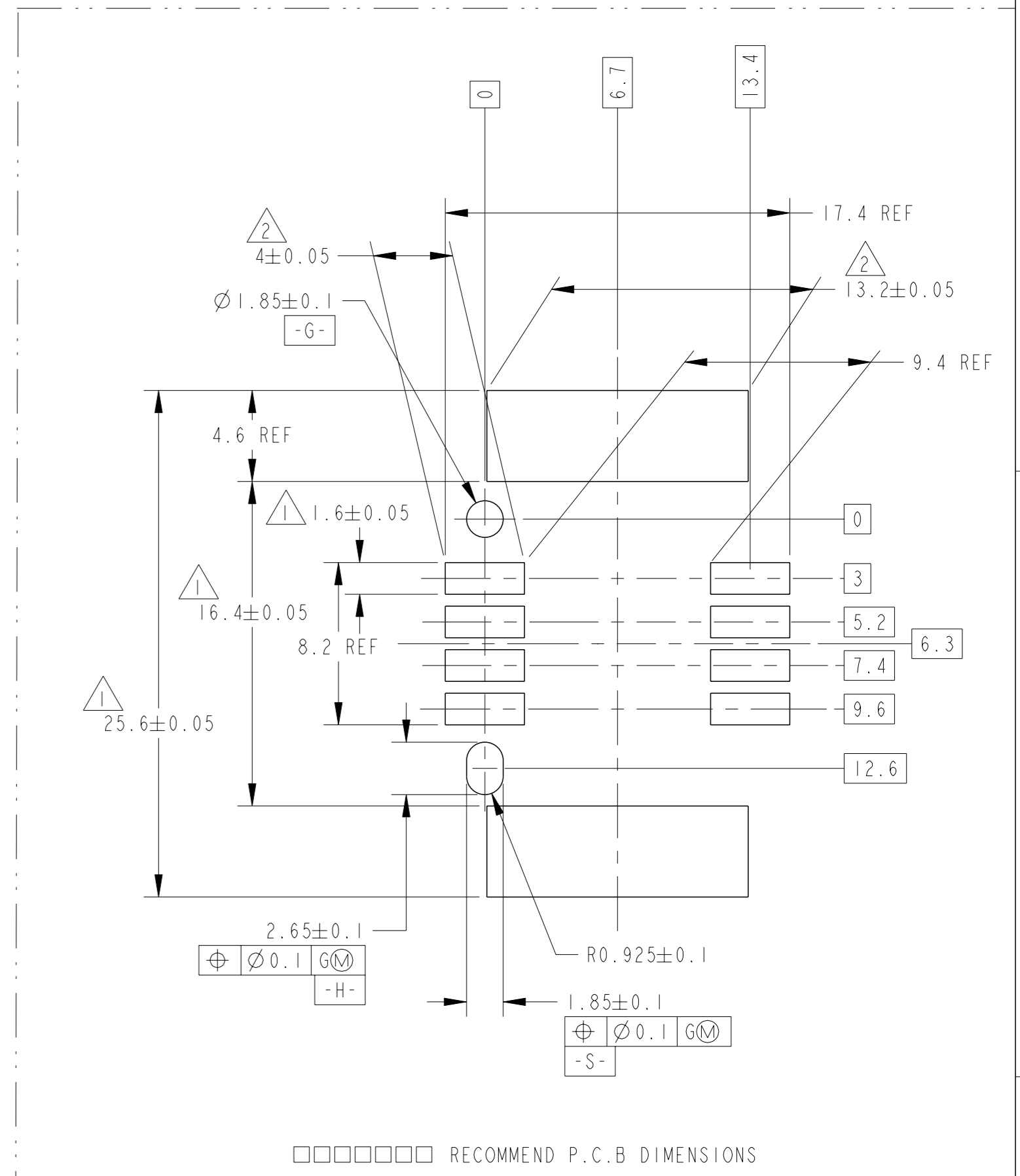
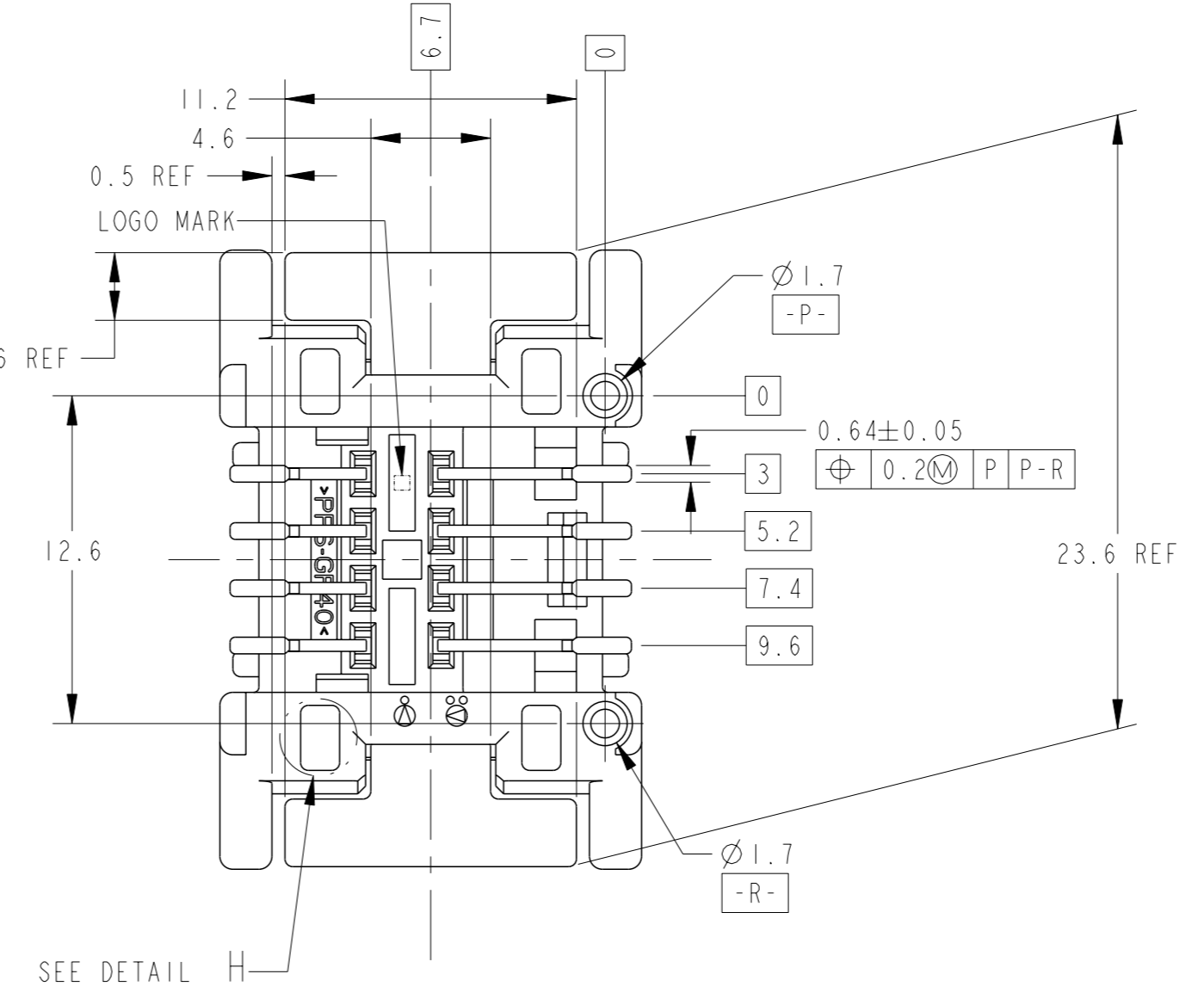
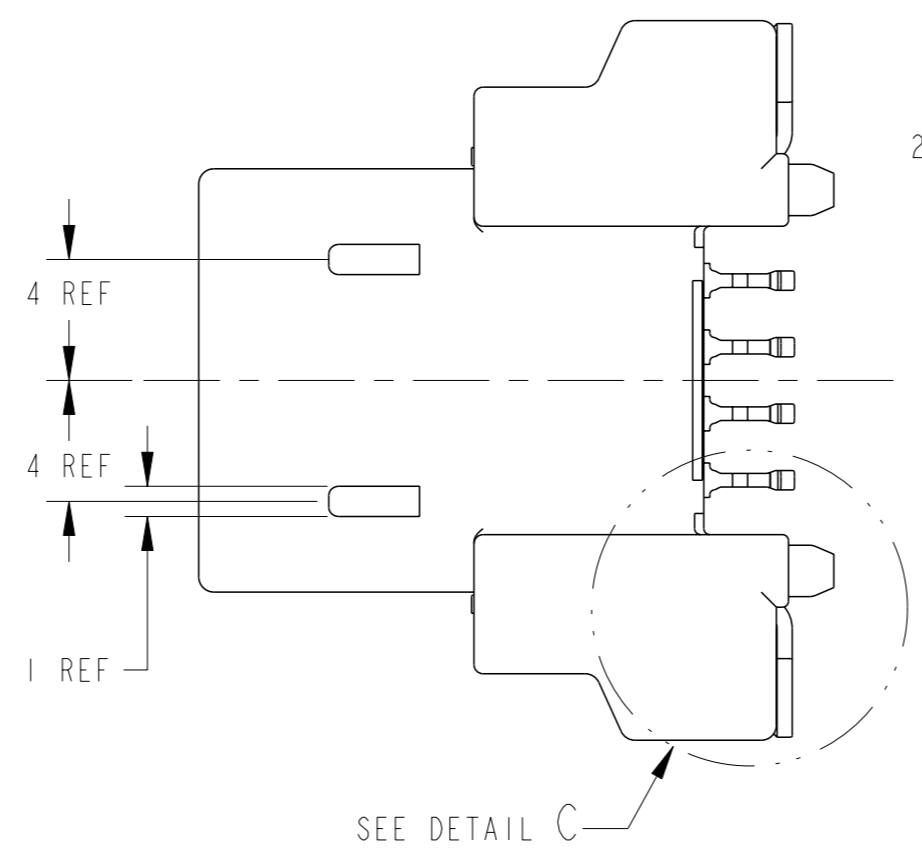
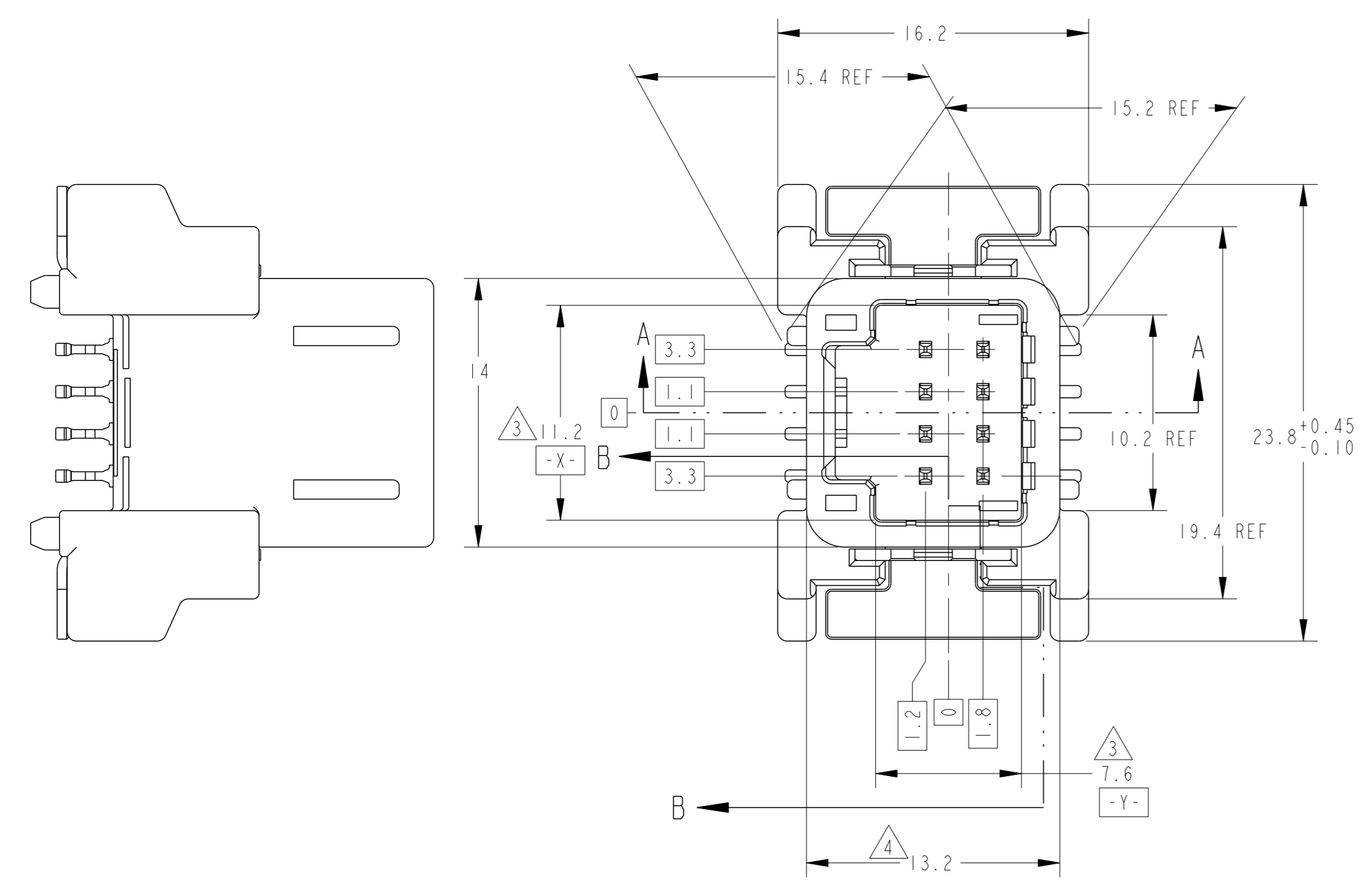


REV	DESCRIPTION	DATE	OWN	APVD
A1	ADD -3	16APR2008	S.Y	H.Y
B	REVISED	28MAY10	TS	KB
B1	REVISED	11APR11	AY	HY
B2	ECR-20-001927	11FEB2020	VI	MT



B-B SCALE 5:1 (ROTATED 90° CW)

DETAIL C SCALE 5:1

DETAIL D SCALE 5:1

TABLE-2

POS. 極数	FINISH	TYPE
8	TIN	0.64

TABLE-1

POS. 極数	TYPE	P/N
8	0.64 CRIMP	1376352
8	0.64111 CRIMP	1717103
8	0.64 IDC	1473802

- △ $\oplus \varnothing 0.1 \text{ G G-H}$ を適用すること
- △ $\oplus \varnothing 0.1 \text{ G G-S}$ を適用すること
- △ $-Z-$ 面より6mmの位置で測定
- △ 最大寸法で管理
- 5. 嵌合相手コネクタの取番: TABLE-1 参照
- 6. 端子構成: TABLE-2 参照
- 7. 本製品の取扱は取扱説明書 No. 411-78145に従うこと。
- 8. 使用基板の厚さは1.6mm
- 9. 実装時の半田ペーストの厚さは0.15mm以上。

△ .POSITION TOLERANCE $\oplus \varnothing 0.1 \text{ G G-H}$

△ .POSITION TOLERANCE $\oplus \varnothing 0.1 \text{ G G-S}$

△ .MEASURED AT 6mm FROM $-Z-$

△ .MUST BE CONTROLLED AT MAXIMUM DIMENSION
 5. MATING CONNECTOR PART No.: SEE TABLE-1
 6. DETAIL OF TERMINALS: SEE TABLE-2
 7. HANDLING OF THIS PART SHOULD FOLLOW INSTRUCTION SHEET No. 411-78145
 8. APPLICABLE PRINTED CIRCUIT BOARD'S THICKNESS 1.6mm
 9. WHEN MOUNTING, THICKNESS OF SOLDER PASTE: 0.15mm MIN.

OUTER 外表	PAPER BOX タンボール箱	PAPER BOX タンボール箱	PLASTIC BOX 通い箱	PACKING STYLE 梱包形態		
				2	SOLDER PEG	POST-TIN
INNER 内装	HARD TARY ハードトレイ	PLASTIC TUBE プラスチックチューブ	PLASTIC TUBE プラスチックチューブ	4	0.64 TAB CONTACT (L)	POST-TIN
				4	0.64 TAB CONTACT (S)	POST-TIN
				1	8P CAP HOUSING	BLACK
				1	NAME	FINISH/COLOR

THIS DRAWING IS A CONTROLLED DOCUMENT. DWN: S. YOKOZAKI 10JUL2007
 CHK: S. AMEMIYA 10JUL2007
 APVD: H. YAMAGAMI 10JUL2007

TE Connectivity

0.64 SMD 8POSITION CAP ASSEMBLY V-TYPE

SIZE: 4:1 SHEET 1 OF 1 REV: B2