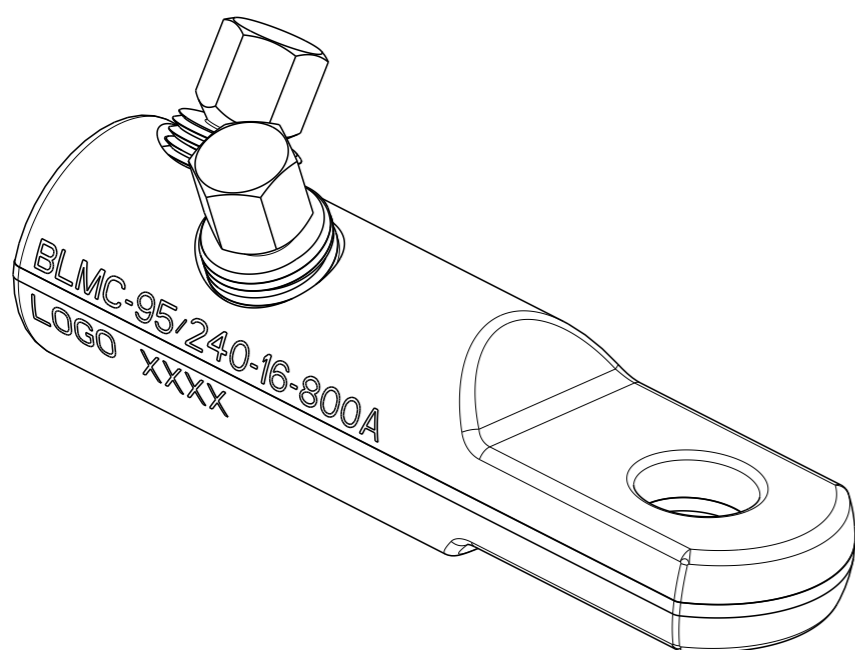
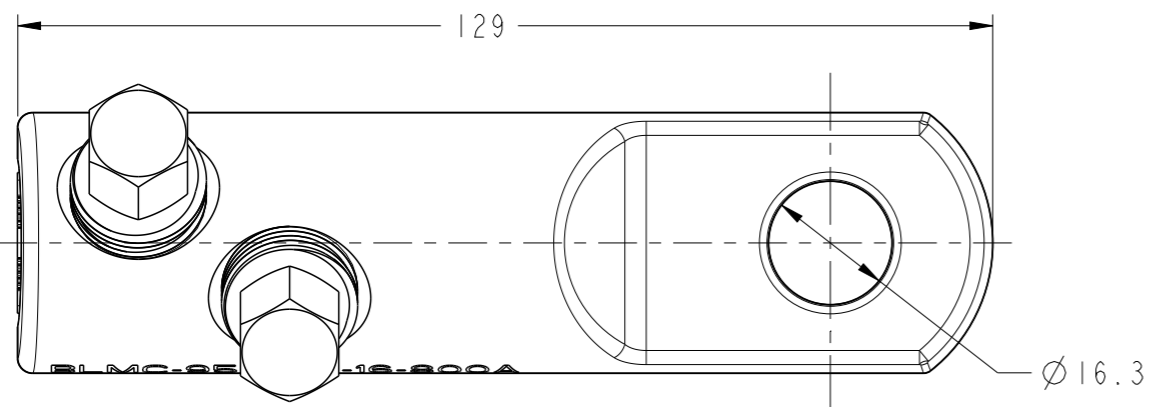
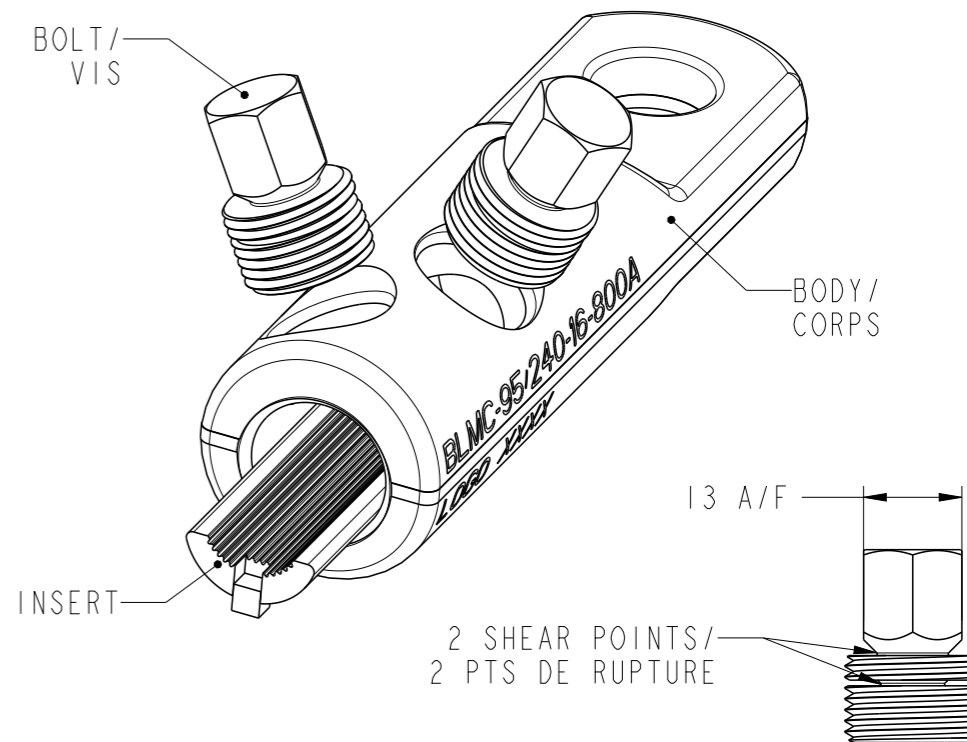
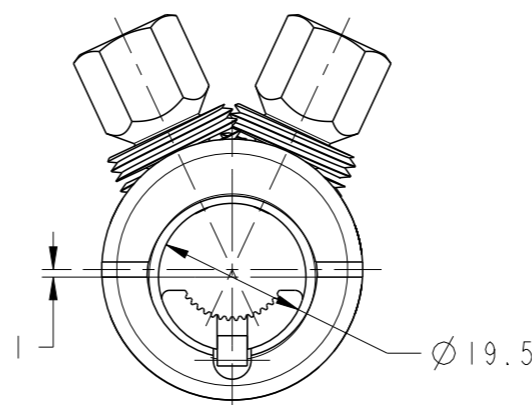
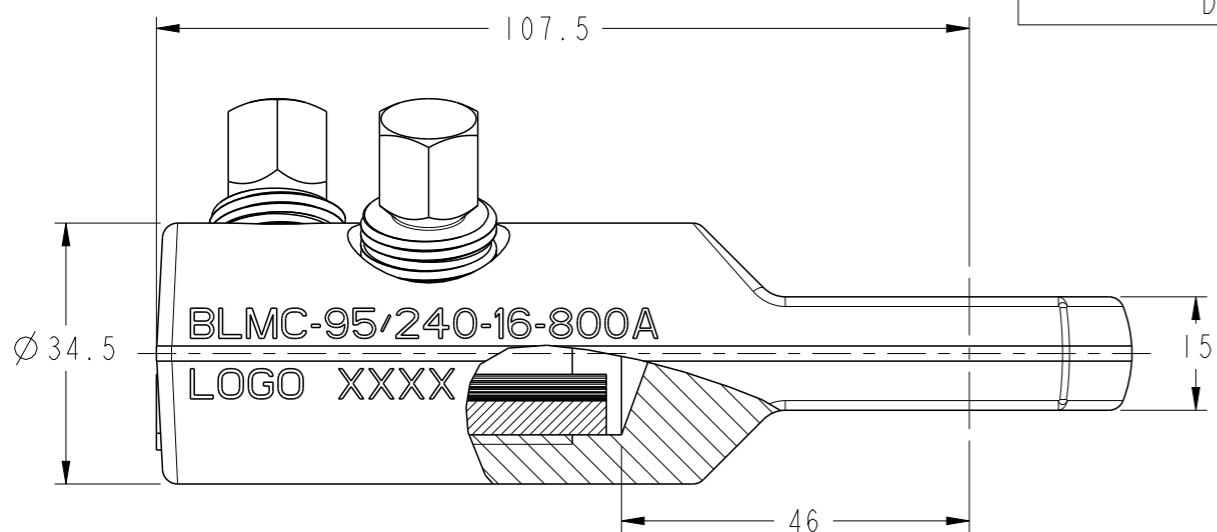


THIS DRAWING IS UNPUBLISHED.
 DIFFUSION RESTREINTE
 © COPYRIGHT 20 BY -

RELEASED FOR PUBLICATION
 LIBRE A LA DIFFUSION
 20
 ALL RIGHTS RESERVED.
 TOUS DROITS RESERVES


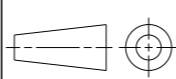
| | |
|---------------------|-------------|
| BLMC-95/240-16-800A | 1923597-1 |
| DESCRIPTION | PART NUMBER |

| REVISIONS | | | | | |
|-----------|---------|---------------------------|-----------|-----------|-----------|
| P | LTR REV | DESCRIPTION MODIFICATIONS | DATE | DWN DESS. | APVD APP. |
| | A | CREATION | 15SEP2008 | BM | NA |
| | B | ECR-17-017551 | 13APR2018 | LP | NA |
| | | | | | |
| | | | | | |



| | AL | | | | CU | |
|---|-----------------------------------|---------------------------------|--|-------------------------------------|-----------------------------------|--|
| | ROUND STRANDED /Rond câblé /RM | ROUND SOLID /Rond solide /RE | SECTOR STRANDED /Sectoral câblé /SM | SECTOR SOLID /Sectoral câblé /SE | ROUND STRANDED /Rond câblé /RM | SECTOR STRANDED /Sectoral câblé /SM |
| CONDUCTOR CROSS-SECTION /Section conducteur /Querschnittsbereich mm ² | 95-240 | 95-240 | 95-150 (185 and 240 with rounding) | 95-150 (185 with 90°) | 95-240 | 95-150 (185 and 240 with rounding) |
| CONDUCTOR DIAMETER /Diamètre conducteur /Leiterdurchmesser mm | Ø11-Ø19.2 | Ø10.5-Ø18 | - | - | Ø11-Ø19.2 | - |

TOLERANCES UNLESS OTHERWISE SPECIFIED: -
 TOLERANCES NON SPECIFIEES: -

| | | | | |
|---|--|---|---|--|
| THIS DRAWING IS A CONTROLLED DOCUMENT. <small>CE PLAN EST UN DOCUMENT CONTROLE PAR TYCO ELECTRONICS CORPORATION. IL EST SUSCEPTIBLE D'ETRE REVISE. POUR OBTENIR LA DERNIERE REVISION, CONTACTER LE SERVICE TECHNIQUE DE TYCO ELECTRONICS SIMEL SAS, 21220 GEVREY-CHAMBERTIN, FRANCE.</small> | | DWN/DESSINE B. MILLOT 15SEP2008 |  TE Connectivity | |
| DIMENSIONS: mm | TOLERANCES UNLESS OTHERWISE SPECIFIED: TOLERANCES NON SPECIFIEES (SUIV NB DE DECIMALES): 0 PLC/DEC: ±0 1 PLC/DEC: ±0 2 PLC/DEC: ±0 3 PLC/DEC: ±0 4 PLC/DEC: ±0 ANGLES ± | CHK/VERIFIE A. BAZEROLLE | | |
|  | MATERIAL MATIERE AL ALLOY | APVD/APPROUVE N. ALMEIDA | NAME TITRE BLMC-95/240-16-800A | |
| | FINISH FINITION TINNED | PRODUCT SPEC SPEC. PRODUIT - | SIZE FORMAT A3 | |
| | | APPLICATION SPEC SPEC. APPLICATION - | CAGE CODE - | |
| | | WEIGHT MASSE APPROX. 231 g | DRAWING NO No PLAN C-1923597 | |
| | | CUSTOMER DRAWING /PLAN CLIENT | RESTRICTED TO RESERVE A | |
| | | UNIQUEMENT POUR REFERENCE | SCALE ECHELLE 1:1 | |
| | | | SHEET FEUILLE OF DE REV B | |