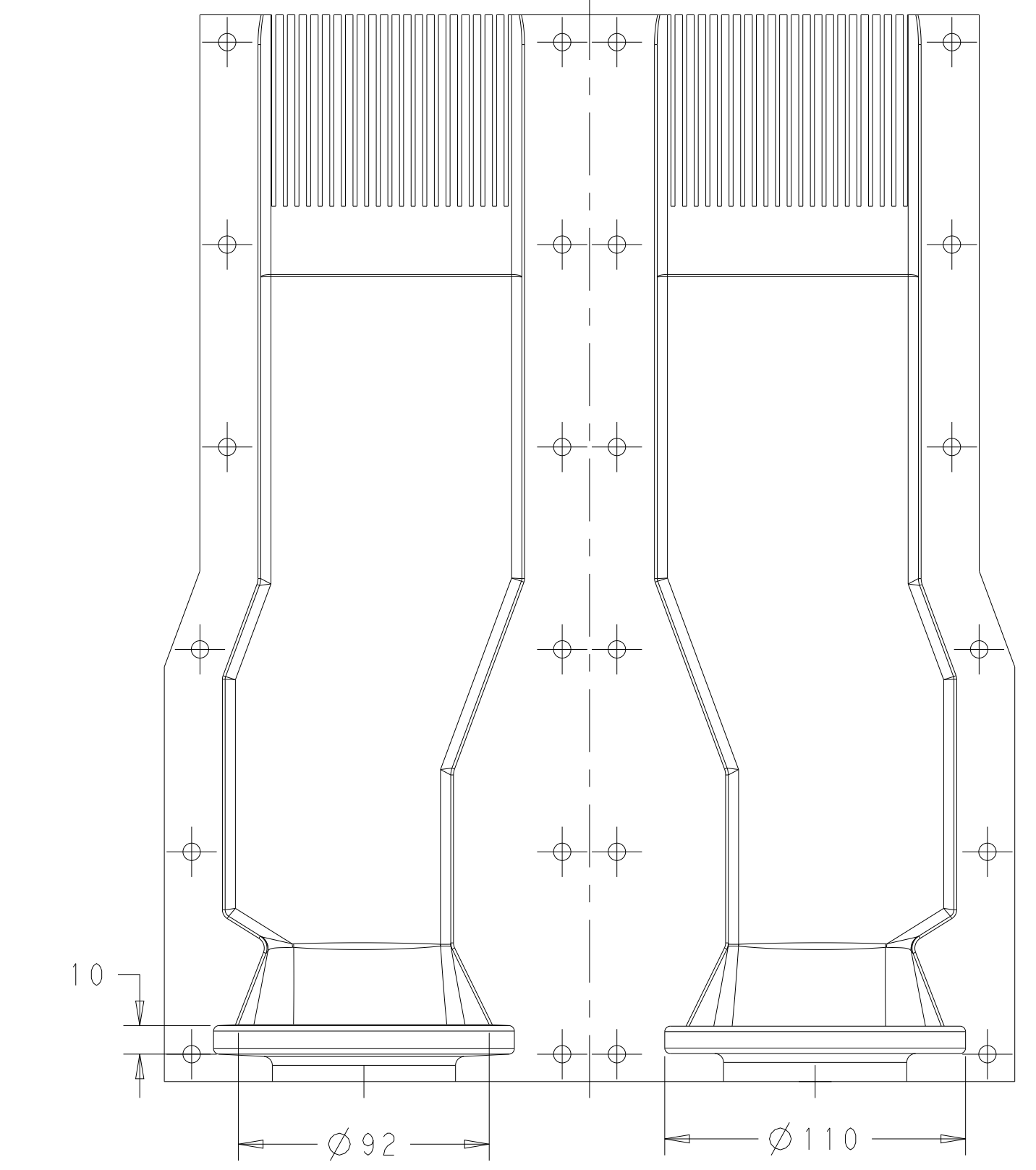
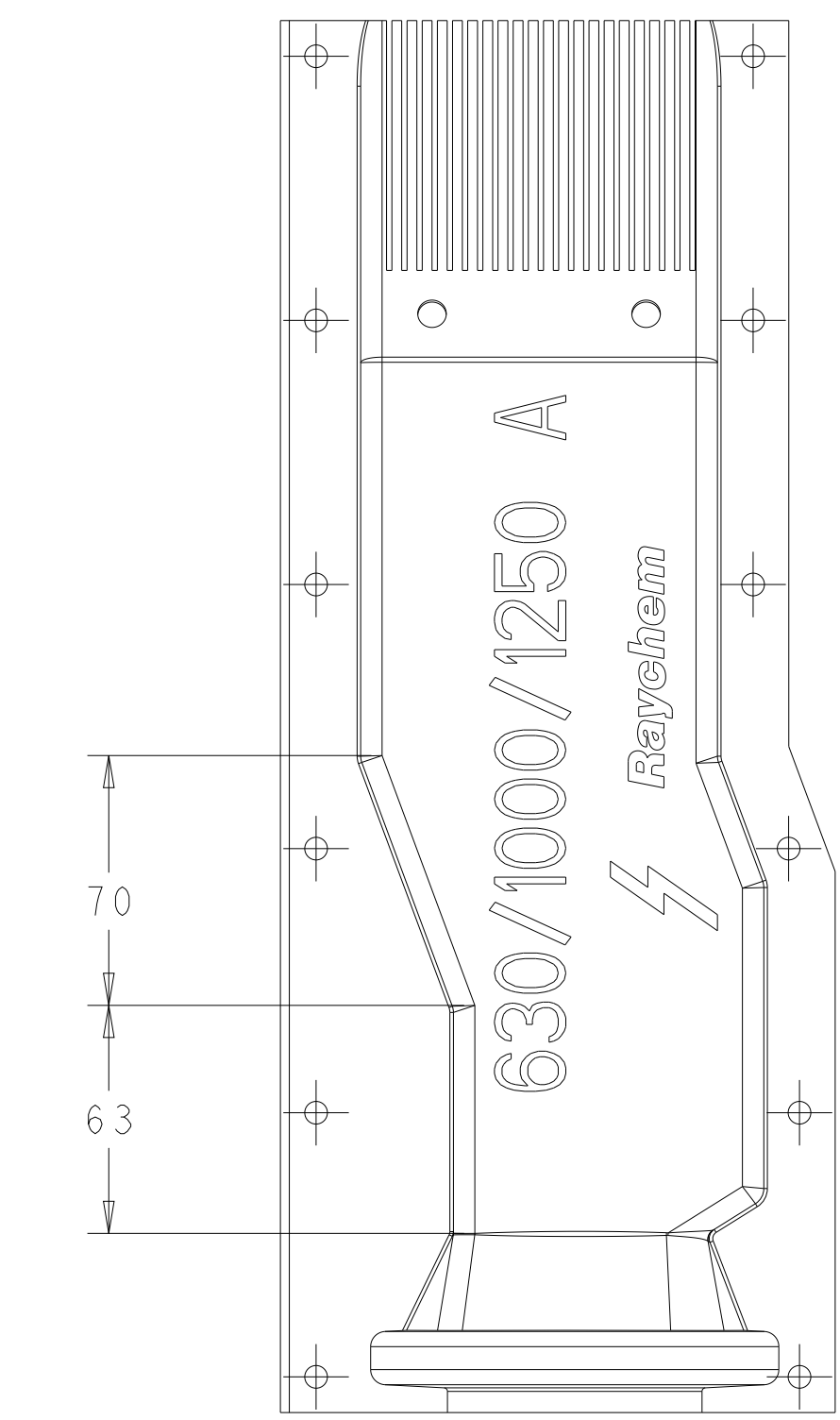
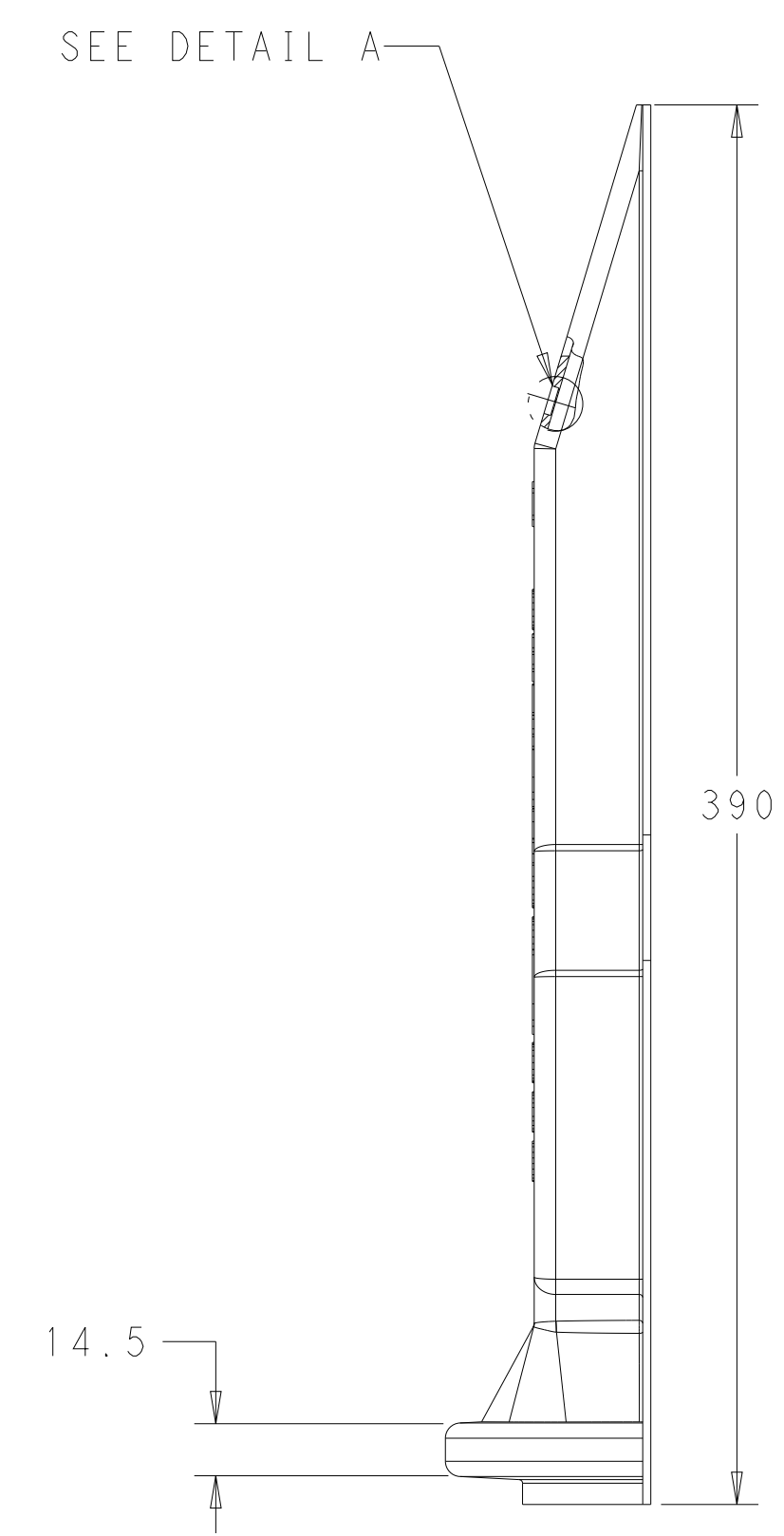
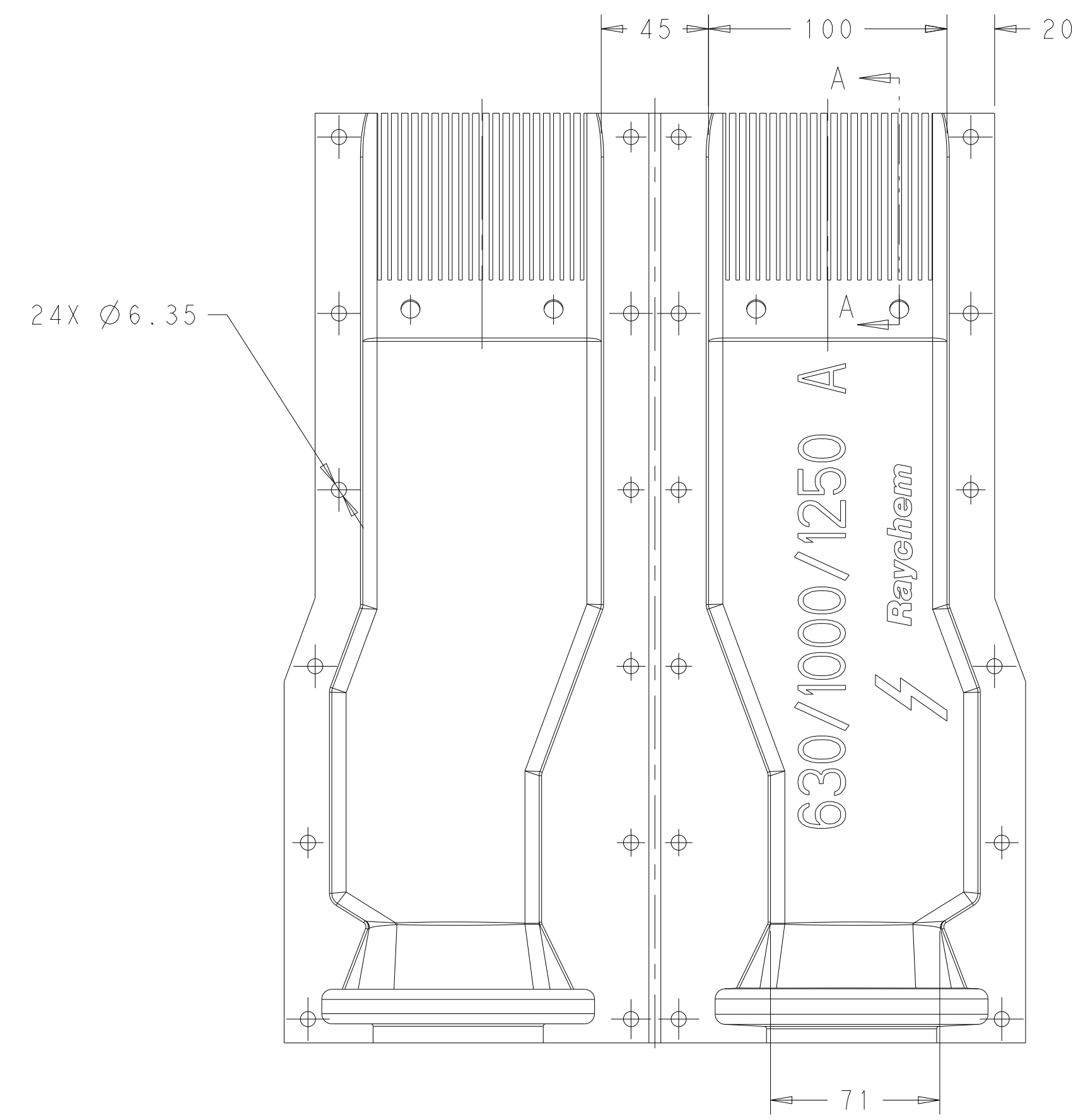


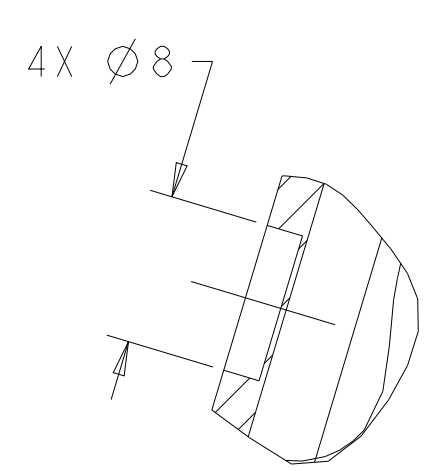
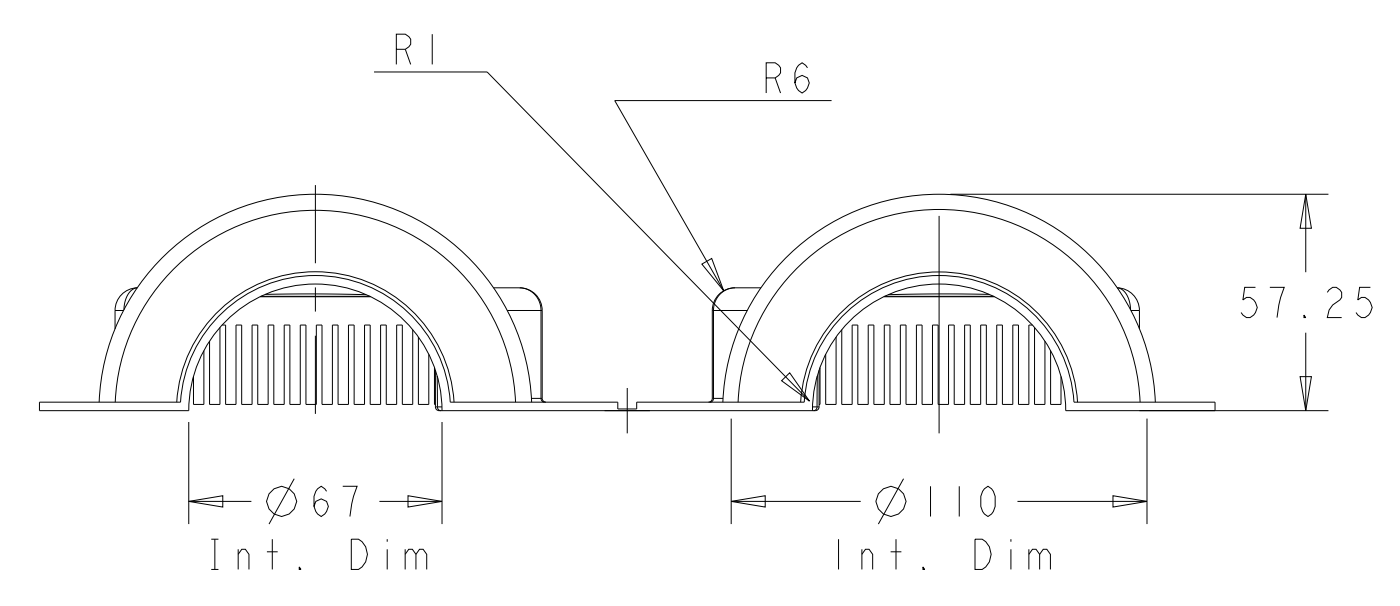
REVISIONS				
P	LTN	DESCRIPTION	DATE	APVD
A	ECR-23-191965		03OCT2023	MT JB



VIEW SHOWN AT OPEN POSITION

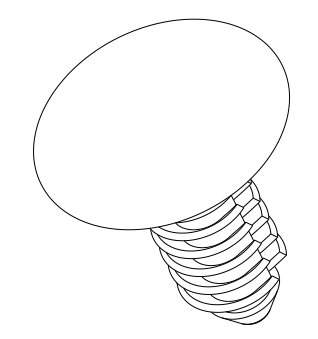
VIEW SHOWN AT CLOSED POSITION

REAR VIEW

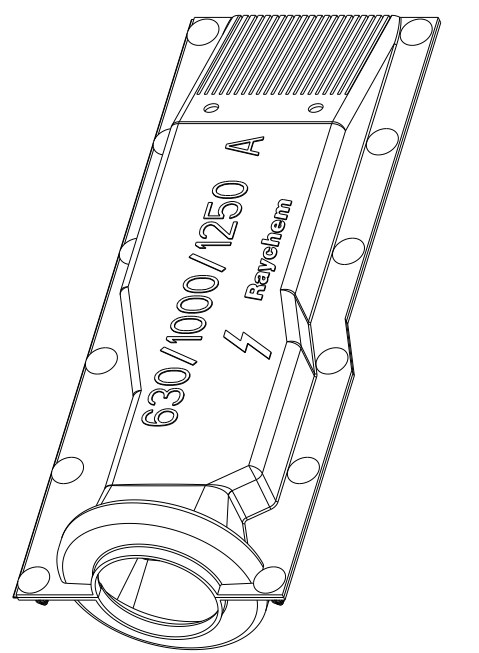


DETAIL A
SCALE 5:2

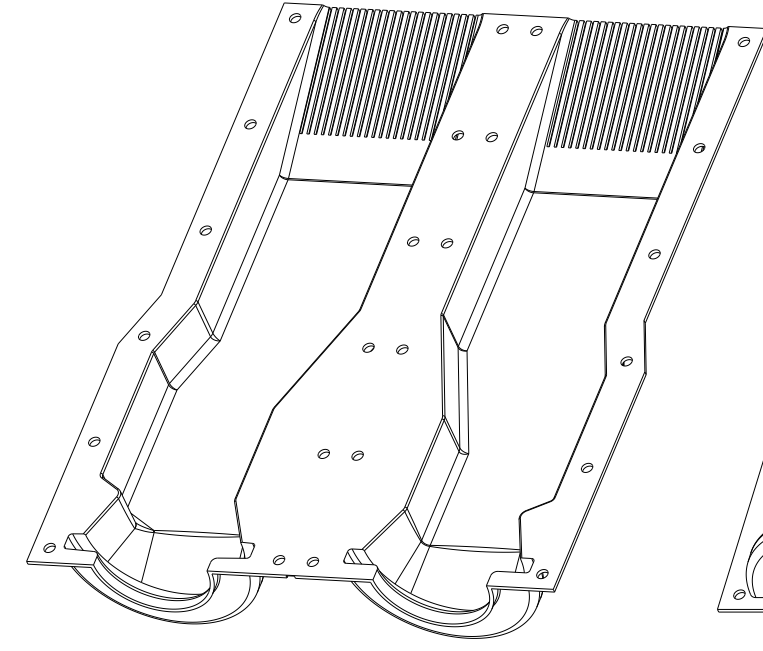
- NOTES:**
- PARTS TO BE KITTED 12 PIECES PER BOX. NESTED OPEN.
 - PARTS TO BE KITTED WITH 12 LATCHES PER PIECE, 144 PIECES PER BOX. BCIC-LATCH(B250)
 - PART DESCRIPTION: LVBC-DT-630/1250A(B12)
 - COCER SURFACE FINISH: -FINE SHOT BLAST
 - HINGE ON THE PART CONNECTING. THE TWO HALVES MAY BE CONTINUOUS.



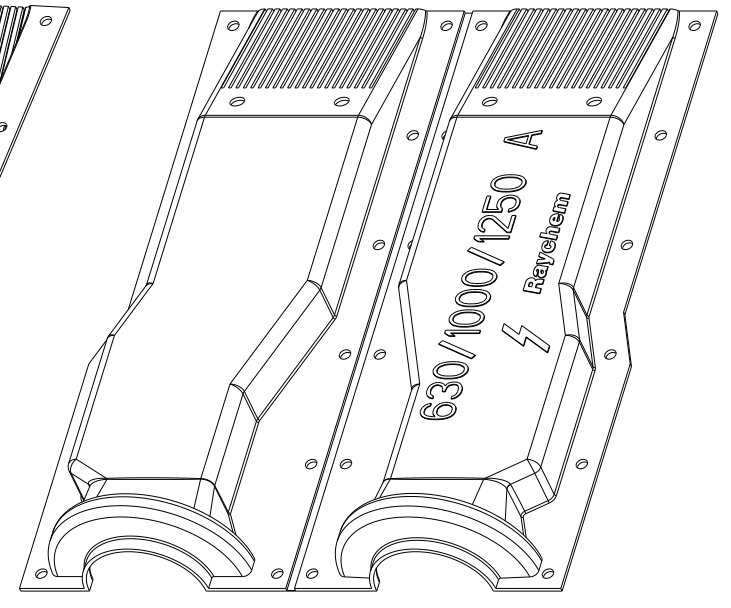
BCIC-LATCH(B250)
D92393-000
12 per Cover
144 per Box
SCALE 2:1



SCALE 1:4
VIEW WITH COVER CLOSED



SCALE 1:4



SCALE 1:4
VIEW WITH COVER OPEN

THIS DRAWING IS A CONTROLLED DOCUMENT.		OWN: GANESH C M 05JAN2018	STE TE Connectivity	
DIMENSIONS:		CHK: M JAMES 05JAN2018		
mm	TOLERANCES UNLESS OTHERWISE SPECIFIED:	APVD: M JAMES 05JAN2018	NAME: LVBC-DT-630/1250A(B12)	
0 PLC	±	PRODUCT SPEC	CZ9785-000	
1 PLC	±0.5	APPLICATION SPEC	-	
2 PLC	±0.13	SIZE	A1	
3 PLC	±0.013	CAGE CODE	1899770-7	
4 PLC	±0.001	DRAWING NO	-	
ANGLES	±	RESTRICTED TO	-	
FINISH	±	SCALE	1:2	
MATERIAL	-	SHEET	1 OF 1	
-	-	REV	A	
CUSTOMER DRAWING				