

4

3

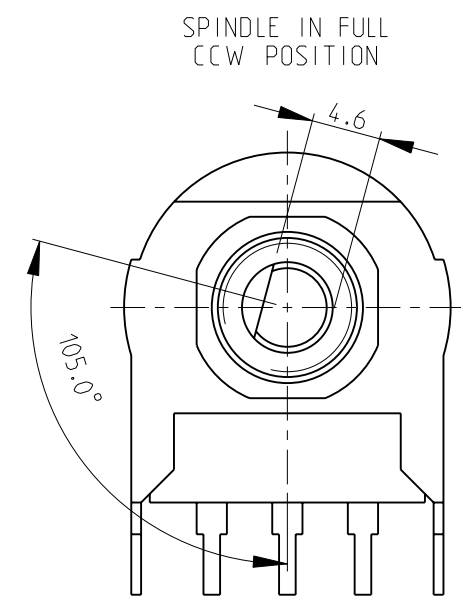
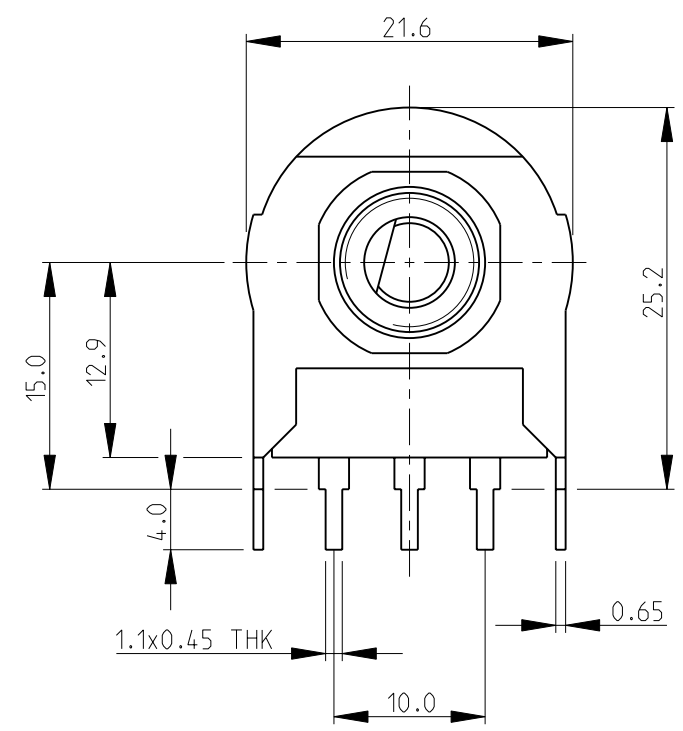
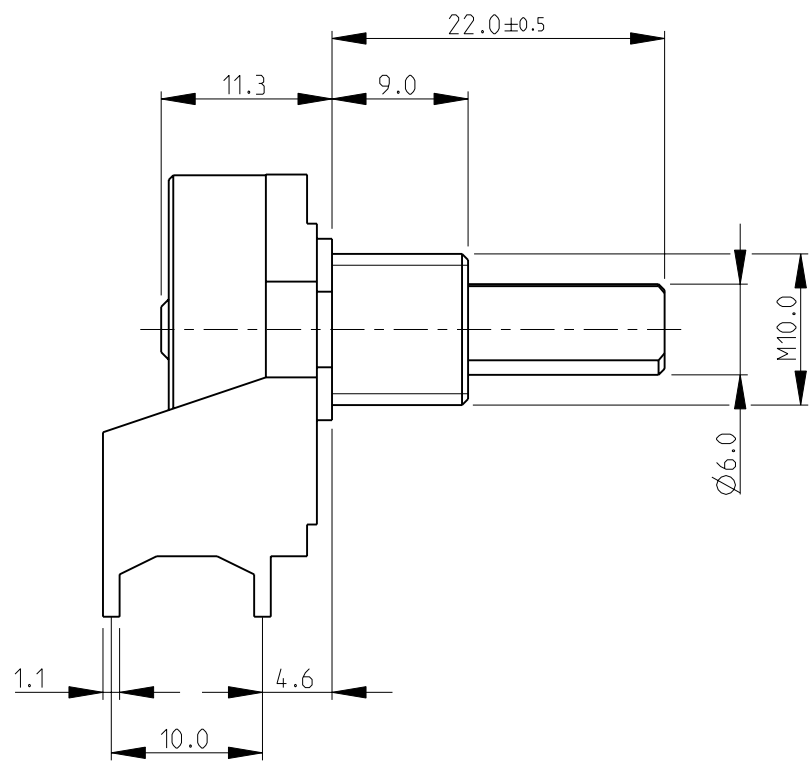
2

1

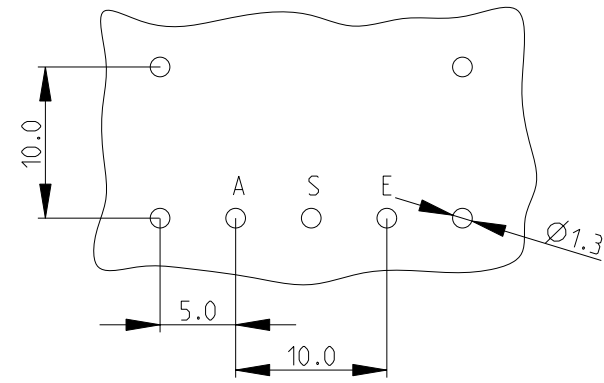
THIS DRAWING IS UNPUBLISHED. RELEASED FOR PUBLICATION 2009
 © COPYRIGHT 2009 BY TYCO ELECTRONICS CORPORATION. ALL RIGHTS RESERVED.

LOC	DIST	REVISIONS			
P	LTR	DESCRIPTION	DATE	DWN	APVD
E	B	BA1	AS PER ECR-09-015674	13-JUL-09	SM AP

- NOTES:
1. PRODUCT NUMBER 24PXA103MLL22N
 2. RESISTANCE: 10K, LINEAR, TOLERANCE 20%
 3. BUSH DIECAST M10 X 9mm NO LOCATION LUG 6mm HOLE
 4. SPINDLE 22mm LONG FLATTED 6mm DIA (4.6mm AF)
 5. SPINDLE MATERIAL: TURNED METAL SPINDLE
 6. TO BE SUPPLIED WITH 1 NUT & 1 WASHER



PCB LAYOUT PLAN



RoHS Compliant

<small>THIS DRAWING IS A CONTROLLED DOCUMENT FOR TYCO ELECTRONICS CORPORATION IT IS SUBJECT TO CHANGE AND THE CONTROLLING ENGINEERING ORGANIZATION SHOULD BE CONTACTED FOR THE LATEST REVISION.</small>		DWN SUBHASH.M 12-JUN-09 CHK ALLAN.PILE 12-JUN-09 APVD STEPHEN.P 12-JUN-09	Tyco Electronics Corporation Dorcan, Swindon, SN3 5HH
DIMENSIONS: mm	TOLERANCES UNLESS OTHERWISE SPECIFIED: 0 PLC ±0.2 1 PLC ±0.1 2 PLC ±- 3 PLC ±- 4 PLC ±- ANGLES ±5°	PRODUCT SPEC - APPLICATION SPEC - WEIGHT -	NAME SPINDLE OPERATED POTENTIOMETER SERIES 23 (TYPE 24)
MATERIAL -	FINISH -	CUSTOMER DRAWING	SIZE A3 CAGE CODE 00779 DRAWING NO C-1879733 RESTRICTED TO -
		SCALE 2:1	SHEET 1 OF 1 REV BA1