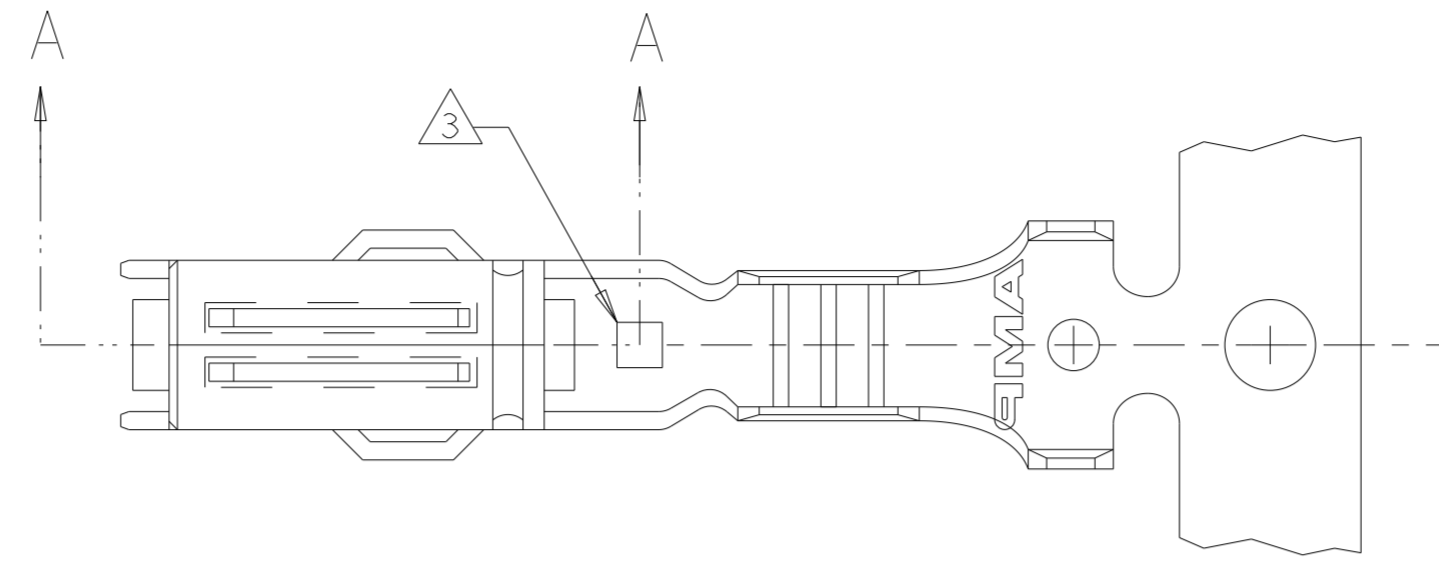
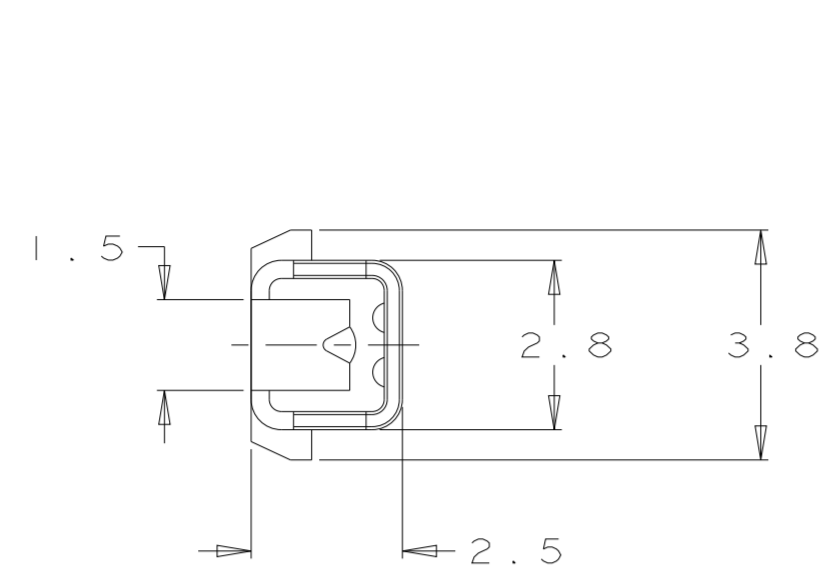


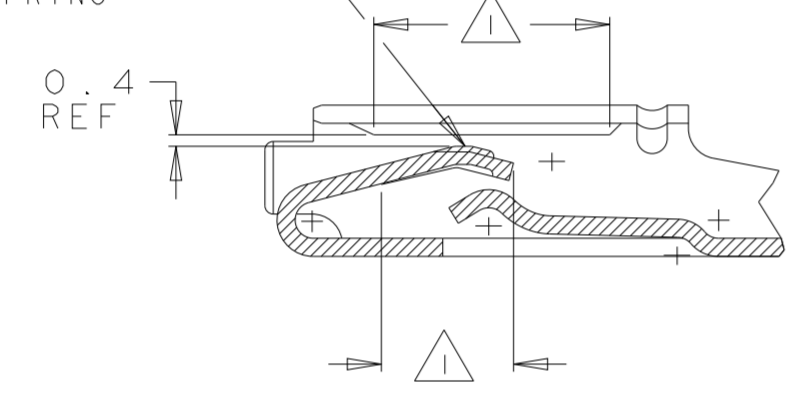
THIS DRAWING IS UNPUBLISHED. RELEASED FOR PUBLICATION  
 © COPYRIGHT - BY - ALL RIGHTS RESERVED.

REVISIONS				
P	LTR	DESCRIPTION	DATE	APVD
H5		REVISED PER ECO-16-011163	08SEP2016	DD AH
H6		REVISED PER ECO-17-014752	10OCT2017	JMS AH
U		REVISED PER ECO-21-002133	15APR2021	SM AH
U1		REV PER ECN-24-271487	20JUN2024	SMR CL

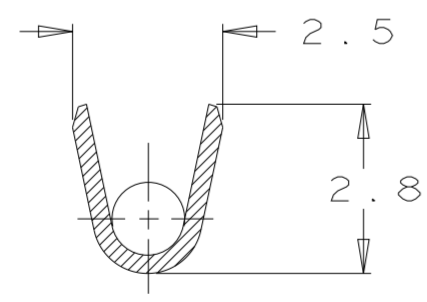
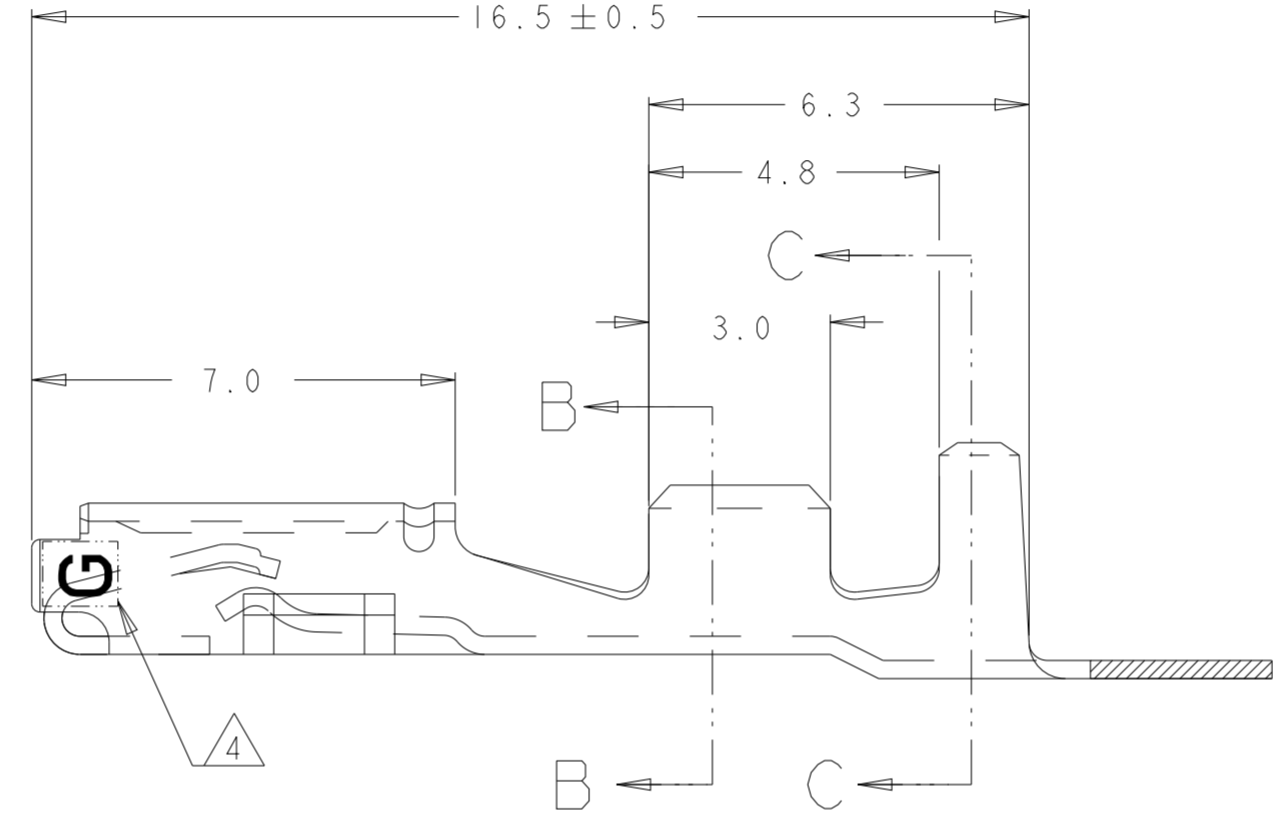


- 1 0.00076 MINIMUM THICK GOLD PLATE OVER 0.0013 MINIMUM NICKEL PLATE.
- 2 0.0008 MINIMUM THICK PRE-TIN.
- 3 0.75 x 0.75 DIE IDENTIFICATION MARK.
- 4 FOR GOLD PLATED PART ONLY - AT LEAST ONE "G" INDICATOR MUST BE VISIBLE IN THIS LOCATION ON EITHER SIDE INDICATING GOLD PLATED CONTACT
- 5 0.00038 MINIMUM THICK GOLD PLATE OVER 0.0013 MINIMUM NICKEL PLATE.

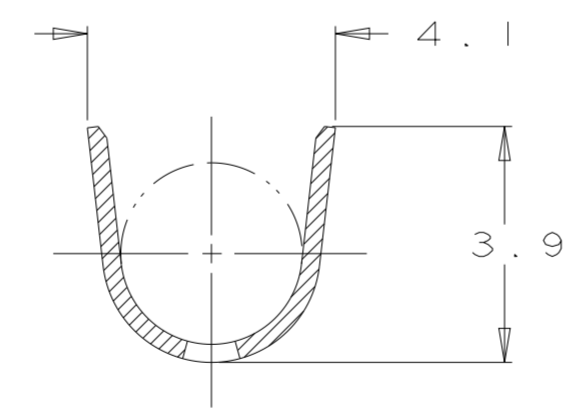
GOLD PLATING IDENTIFIED IS ON TOP SPRING



SECTION A-A



SECTION B-B



SECTION C-C

5	1.2-2.1 (SINGLE WIRE SEALING)	AVS 0.3 - 1.00mm <sup>2</sup>	2-184095-1
2	1.2-2.1 (SINGLE WIRE SEALING)	AVS 0.3 - 1.00mm <sup>2</sup>	184095-2
1	1.2-2.1 (SINGLE WIRE SEALING)	AVS 0.3 - 1.00mm <sup>2</sup>	184095-1
	FINISH	INSULATION DIA	WIRE RANGE
			PART NUMBER

THIS DRAWING IS A CONTROLLED DOCUMENT.

DIMENSIONS: mm	TOLERANCES UNLESS OTHERWISE SPECIFIED:	DWN: KD LYLE 9/20/94	TE Connectivity CONTACT, RECEPTACLE, .070 TYPE (SCAT VERSION)
		CHK: JP KUNKLE 9/23/94	
		APVD: JP KUNKLE 10/21/94	
		PRODUCT SPEC	
MATERIAL: PHOS BRZ (0.3 THK)		APPLICATION SPEC	RESTRICTED TO
		WEIGHT	SIZE: A2 CAGE CODE: 00779 DRAWING NO: C-184095
		CUSTOMER DRAWING	SCALE: 10:1 SHEET: 1 OF 1 REV: U1