

4

3

2

1

THIS DRAWING IS UNPUBLISHED. RELEASED FOR PUBLICATION 20  
 © COPYRIGHT 20 BY TYCO ELECTRONICS CORPORATION. ALL RIGHTS RESERVED.

LOC	DIST	REVISIONS			
P	LTR	DESCRIPTION	DATE	DWN	APVD
CE	16				
	1	PPR 05-738	28JUL05	KG	DW
	2	ADD PANEL CUT-OUT	04JAN06	KG	DW
	A	ECR-08-024899	03OCT2008	KG	DW

1. ASSEMBLY SHOWN FOR REFERENCE ONLY.  
 SHIPPED LOOSE PIECE AS SHOWN ON PAGE 2.

2. ALL ASSEMBLY DIMENSION ARE FOR REFERENCE ONLY.

3. COMPLETE THE CONNECTOR ASSEMBLY BY ADDING EACH OF THE FOLLOWING PRO BEAM MINI KITS:  
 A. EXPANDED BEAM INSERT ASSEMBLY KIT  
 B. FERRULE KIT, ONE PER FIBER

4. THIS PRODUCT HAS NOT COMPLETED VALIDATION TESTING.

△5 PANEL THICKNESS: 1mm MINIMUM.  
 △6 RECOMMENDED FOR FRONT PANEL MOUNTING ONLY.

SCALE 1:1

△5 △6 RECOMMENDED PANEL CUT-OUT

1828826-1

PART NUMBER

THIS DRAWING IS A CONTROLLED DOCUMENT FOR TYCO ELECTRONICS CORPORATION. IT IS SUBJECT TO CHANGE AND THE CONTROLLING ENGINEERING ORGANIZATION SHOULD BE CONTACTED FOR THE LATEST REVISION.		DWN K. GLATFELTER 21 JUL 2005	Tyco Electronics Harrisburg, PA 17105-3608	
DIMENSIONS: mm		CHK D. WERTMAN 28 JUL 2005	NAME CONNECTOR SHELL KIT, BULKHEAD, PRO BEAM MINI	
TOLERANCES UNLESS OTHERWISE SPECIFIED: 0 PLC ± 1 PLC ± 2 PLC ± 3 PLC ± 4 PLC ± ANGLES ±		APVD D. WERTMAN 28 JUL 2005	RESTRICTED TO -	
MATERIAL - HARD ANODIZE		PRODUCT SPEC -	SIZE A200779	DRAWING NO C-1828826
		APPLICATION SPEC -	SCALE 2:1 SHEET 1 OF 2 REV A	
		WEIGHT -	CUSTOMER DRAWING	

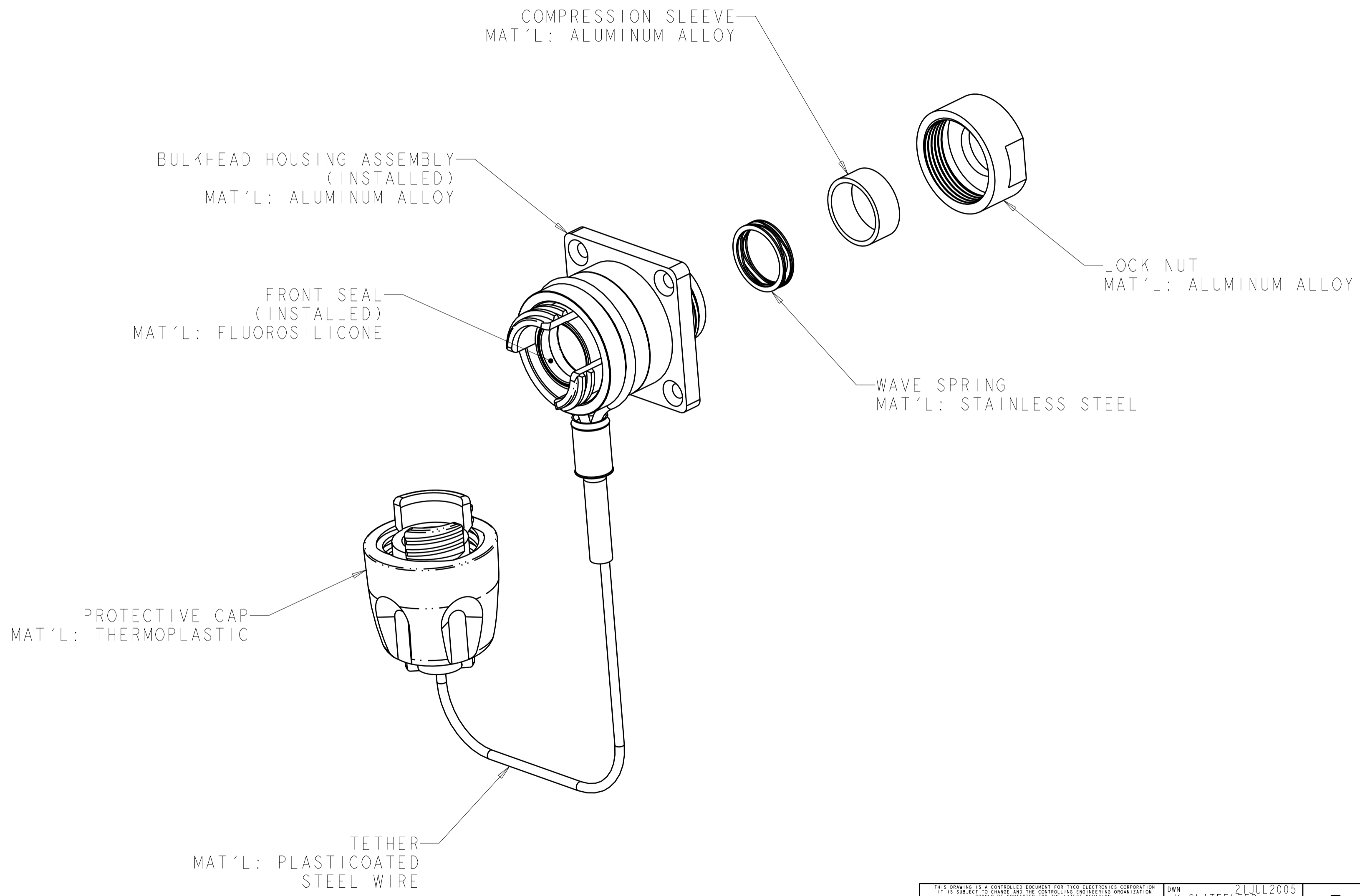
AMP 1471-9 REV 31MAR2000

Pro/ENGINEER DRAWING

THIS DRAWING IS UNPUBLISHED. RELEASED FOR PUBLICATION 20  
 © COPYRIGHT 20 BY TYCO ELECTRONICS CORPORATION. ALL RIGHTS RESERVED.

LOC	DIST	REVISIONS					
		P	LTR	DESCRIPTION	DATE	DWN	APVD
CE	16	-		SEE SHEET 1			

1. SHIPPED LOOSE PIECE AS SHOWN.



<small>THIS DRAWING IS A CONTROLLED DOCUMENT FOR TYCO ELECTRONICS CORPORATION          IT IS SUBJECT TO CHANGE AND THE CONTROLLING ENGINEERING ORGANIZATION          SHOULD BE CONTACTED FOR THE LATEST REVISION.</small>		DWN 21 JUL 2005 K. GLATFELTER CHK 28 JUL 2005 D. WERTMAN APVD 28 JUL 2005 D. WERTMAN	Tyco Electronics Harrisburg, PA 17105-3608
DIMENSIONS: mm 	TOLERANCES UNLESS OTHERWISE SPECIFIED: 0 PLC ± 1 PLC ± 2 PLC ± 3 PLC ± 4 PLC ± ANGLES ±	PRODUCT SPEC APPLICATION SPEC WEIGHT CUSTOMER DRAWING	NAME CONNECTOR SHELL KIT, BULKHEAD, PRO BEAM MINI SIZE CAGE CODE DRAWING NO RESTRICTED TO A200779 C-1828826 -
MATERIAL	FINISH	WEIGHT	SCALE SHEET OF REV
AS LISTED	HARD ANODIZE	-	2:1 2 OF 2 A