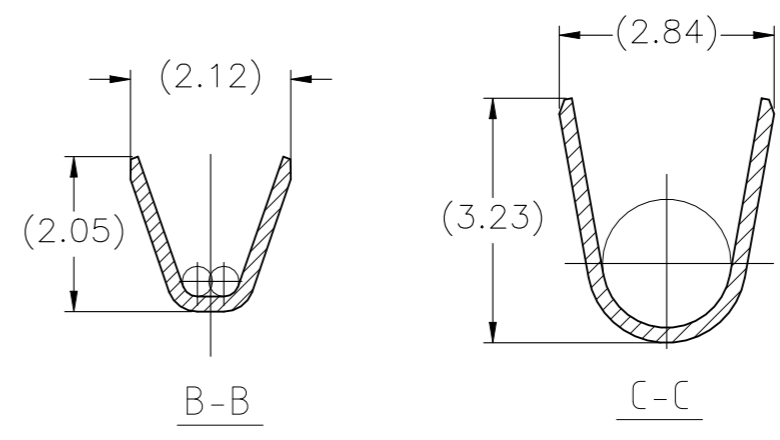
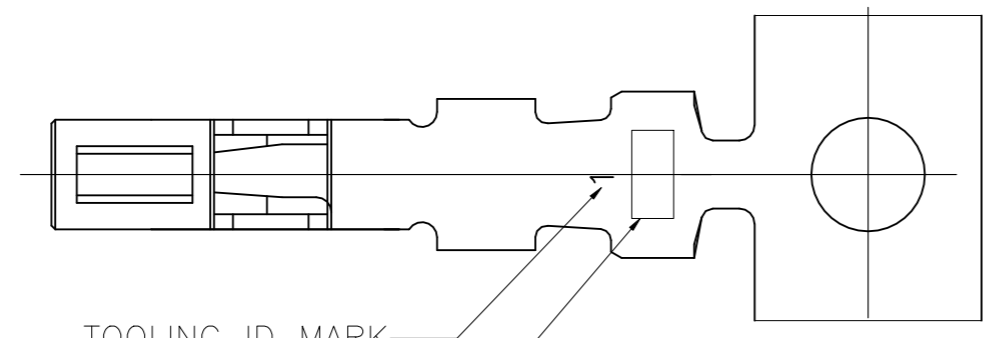
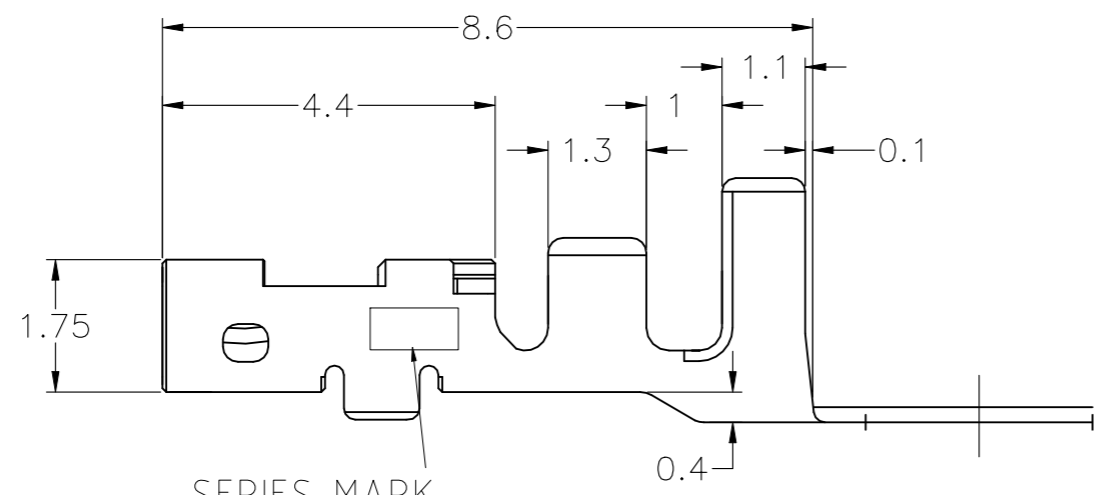
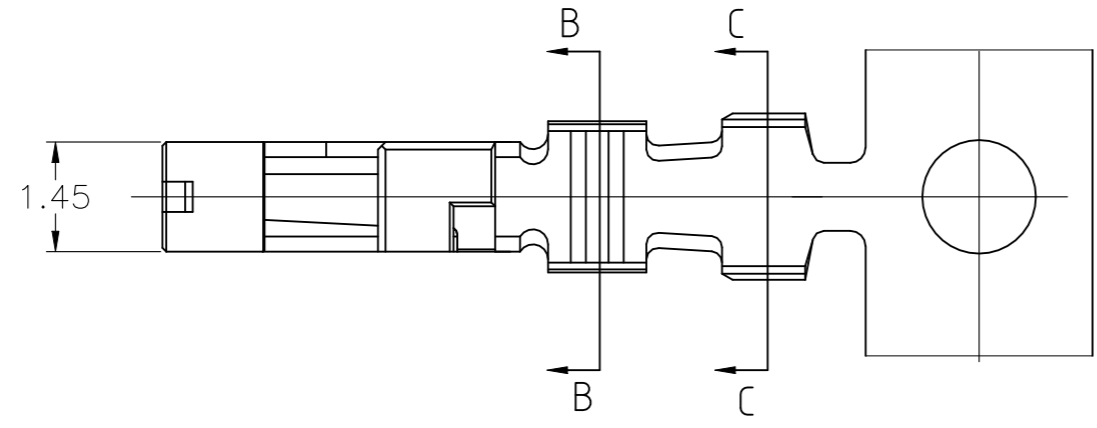


THIS DRAWING IS UNPUBLISHED. RELEASED FOR PUBLICATION
 © COPYRIGHT - By - ALL RIGHTS RESERVED.

LOC	DIST	REVISIONS					
		P	LTR	DESCRIPTION	DATE	DWN	APVD
J	-	F		REVISED PER ECR-22-160661	08DEC2022	HO	TS



1. APPLICATION REC HSG IS APPLIED TO THE PRODUCT OF 2.5mm PITCH OR MORE OF DYNAMIC D1000 SERIES. 2.0mm PITCH CANNOT BE USED.

D 2L 4	AWG#22~#18 0.34~0.86mm ²	φ1.4~φ2.2	COPPER ALLOY,FINISH:CONTACT AREA Au 0.2μm MIN,OVER Ni 1.27μm MIN	1827572-4
D 2L	AWG#22~#18 0.34~0.86mm ²	φ1.4~φ2.2	COPPER ALLOY,FINISH:CONTACT AREA Au 0.38μm MIN,OVER Ni 1.27μm MIN	1827572-2
SERIES MARK	WIRE RANGE	INSULATION DIA	MATERIAL	PART No.

THIS DRAWING IS A CONTROLLED DOCUMENT.		DWN T.KUDO 04MAR2005	STE TE Connectivity	
DIMENSIONS: 単位: 耗 mm		CHK D.MITSUGI 04MAR2005		
TOLERANCES UNLESS OTHERWISE SPECIFIED: 一般公差		APVD D.MITSUGI 04MAR2005	NAME 名称	
0 PLC ± 0.3		PRODUCT SPEC 製品規格 108-78268		
1 PLC ±		APPLICATION SPEC 取付適用規格 114-5377		
2 PLC ±		SIZE	CAGE CODE	DRAWING NO 番号
3 PLC ±		A3 00779		RESTRICTED TO
4 PLC ±		WEIGHT	G-1827572	
ANGLES ± 3deg		CUSTOMER DRAWING		
MATERIAL 材料	FINISH 仕上	SCALE 尺度 10:1		SHEET 1 OF 1
		REV F		