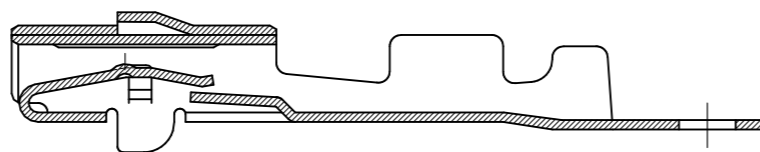
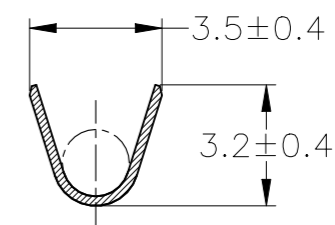
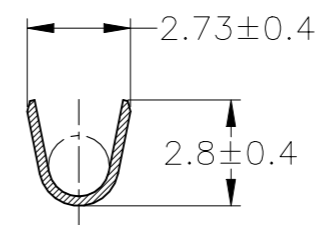
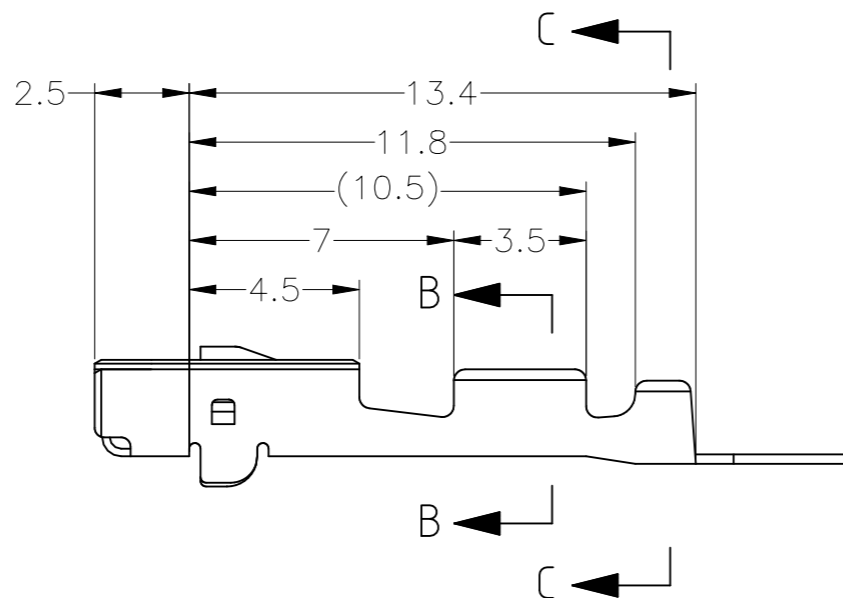
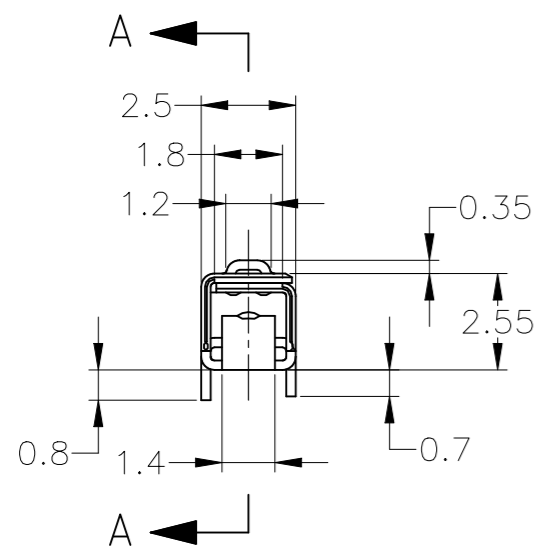
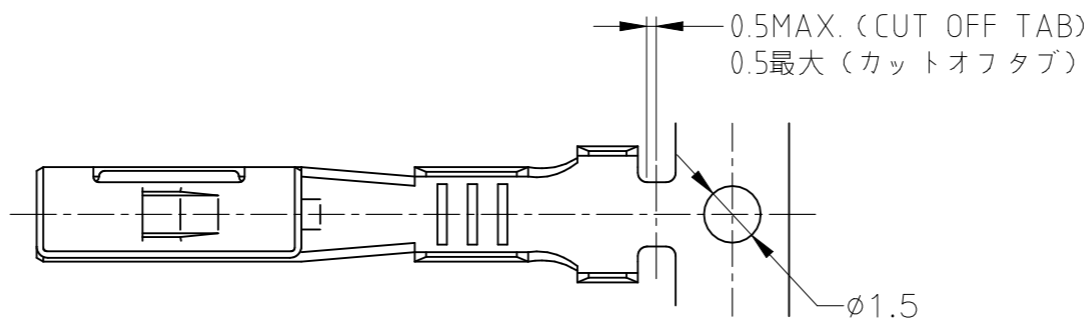


REVISIONS

P	LTR	DESCRIPTION	DATE	DWN	APVD
	F4	REVISED	ECR-23-185274	15SEP2023	AG RK




A-A

1. APPLICATION SPEC NO. 114-5160

1. 取付適用規格番号 114-5160

OBSOLETE	FJPI-175269-2	BRASS	-	PRE-TIN	175269-2
	FJPI-175269-1	BRASS	179425-1	PRE-TIN	175269-1
	PACKING INSTRUCTION NUMBER	MATERIAL	LOOSE PIECE CONTACT PN	FINISH	PART NUMBER

THIS DRAWING IS A CONTROLLED DOCUMENT.		DWN T.SHINOHARA 05JUL2012	 TE Connectivity 070II SERIES M RECEPTACLE CONTACT					
DIMENSIONS: mm		CHK K.BETSUI 05JUL2012				NAME		
TOLERANCES UNLESS OTHERWISE SPECIFIED:		APVD K.BETSUI 05JUL2012				PRODUCT SPEC		
0 PLC ± - 1 PLC ± - 2 PLC ± - 3 PLC ± - 4 PLC ± - ANGLES ± -		APPLICATION SPEC						
TOLERANCES UNLESS OTHERWISE SPECIFIED: 一般公差		MATERIAL SEE TABLE		FINISH SEE TABLE				
10 ≥ : ±0.2 30 ≥ > 10 : ±0.25 100 ≥ > 30 : ±0.3 ANGLE : ±3°		WEIGHT 0.000000		RESTRICTED TO				
SEE TABLE		CUSTOMER DRAWING		SCALE 5:1 SHEET 1 OF 1 REV F4				

抱合電線断面積 (WIRE RANGE) 0.56~1.29 mm ² (AWG#20-#16)	被覆外径 (INSULATION DIA.) 1.8~2.6 mmφ
---	---------------------------------------